

Excellent Integrated System Limited

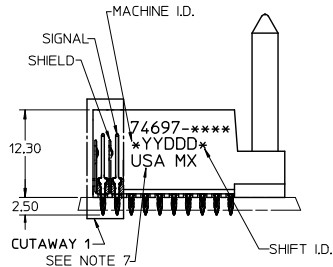
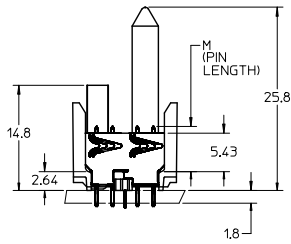
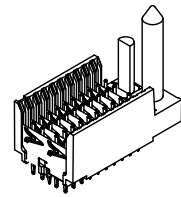
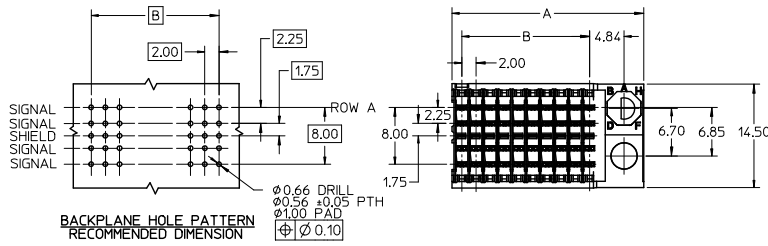
Stocking Distributor

Click to view price, real time Inventory, Delivery & Lifecycle Information:

[Molex Connector Corporation](#)
[0746979104](#)

For any questions, you can email us directly:

sales@integrated-circuit.com



NOTES:

1. MATERIAL: HOUSING -LIQUID CRYSTAL POLYMER (LCP) GLASS-FILLED. UL 94 V-0. COLOR: BLACK. SIGNAL & SHIELD -COPPER ALLOY.
2. FINISHES: SELECTIVE GOLD (Au) ON CONTACT AREA, SELECTIVE MATTE TIN (Sn) ON TAILS, NICKEL (Ni) OVERALL.
3. THIS PART CONFORMS TO MOLEX PRODUCT SPECIFICATION PS-74031-999.
4. FOR MIXED CONTACT MATING LENGTHS CONSULT MOLEX FOR AVAILABILITY.
5. FOR SPECIFIC PART NUMBER AND MATING INFORMATION REFER TO SHEET 2.
6. PACKAGE PER PK-74696-003.
7. EITHER MARK PART NUMBER AND DATE CODE APPROXIMATELY WHERE SHOWN OR PLACE LABEL ON THE TUBE.
8. THIS PART CONFORMS TO CLASS B REQUIREMENTS OF MOLEX COSMETIC SPECIFICATION PS-45499-002.
9. MAPS (MOLEX ADVANCED PLATING SYSTEM).

THE PRIMARY CARTON WITH A LABEL STATING "ELV AND RoHS COMPLIANT" IS LEAD FREE. CARTONS WITHOUT THIS LABEL MAY CONTAIN LEAD.

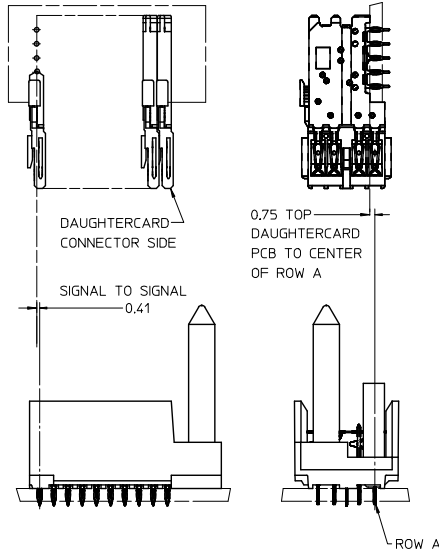
LEAD FREE CONVERSION EC NO: UCP2015-0687 DRAWINGS: 2012/08/21 CHK: KIMOLFE 2012/11/21 APPR: SMILLER 2012/12/14	QUALITY SYMBOLS ∇=0 ∇=0 ∇=0	GENERAL TOLERANCES (UNLESS SPECIFIED)		DIMENSION STYLE MM ONLY		SCALE 2.5:1	DESIGN UNITS METRIC	THIRD ANGLE PROJECTION	
		4 PLACES ± --- ± --- 3 PLACES ± --- ± --- 2 PLACES ± --- ± --- 1 PLACE ± --- ± --- 0 PLACE ± --- ± ---		DRAWN BY: MOWANG CHECKED BY: NMARTIN APPROVED BY: CBIXLER		DATE: 2001/10/10	DATE: 2001/10/12	DATE: 2001/10/12	
		ANGULAR ±1/2°		MATERIAL NO.		DOCUMENT NO.		SHEET NO.	
		DRAFT WHERE APPLICABLE MUST REMAIN WITHIN DIMENSIONS		SEE SHEET 2		SD-74697-003		1 OF 2	
THIS DRAWING CONTAINS INFORMATION THAT IS PROPRIETARY TO MOLEX INCORPORATED AND SHOULD NOT BE USED WITHOUT WRITTEN PERMISSION									

P/N 74697-()	-**0*	-**1*	-**2*	-**3*	-**4*	-**5*	-**6*	-**7*	-**8*
KEYING PIN ORIENTATION									

74697-****

CONTACT LOAD
(PIN LENGTH)
1 & 6 = 4.75
2 & 7 = 6.25
3 & 8 = 4.25
4 & 9 = 5.15

NUMBER OF COLUMNS/PLATING
11 = 10 COLUMN MATTE TIN (FORMERLY TIN/LEAD)
26 = 25 COLUMN MATTE TIN (FORMERLY TIN/LEAD)
61 = 10 COLUMN MATTE TIN (MAPS)
76 = 25 COLUMN MATTE TIN (MAPS)
91 = 10 COLUMN MATTE TIN
86 = 25 COLUMN MATTE TIN



PART NUMBER	COLUMN	NUMBER OF SIGNAL PIN	NUMBER OF SHIELD	A	B	M	GOLD THICKNESS MICROMETER	TIN THICKNESS MICROMETER
74697-61*1	10	40	10	27.00	18.00	4.75	0.25 MAPS	0.76
74697-61*1							0.76	
74697-61*6							1.27	
74697-76*1	25	100	25	57.00	48.00	4.75	0.25 MAPS	0.76
74697-6*1							0.76	
74697-6*6							1.27	
74697-61*2	10	40	10	27.00	18.00	6.25	0.25 MAPS	0.76
74697-61*2							0.76	
74697-61*7							1.27	
74697-76*2	25	100	25	57.00	48.00	6.25	0.25 MAPS	0.76
74697-6*2							0.76	
74697-6*7							1.27	
74697-61*3	10	40	10	27.00	18.00	4.25	0.25 MAPS	0.76
74697-61*3							0.76	
74697-61*8							1.27	
74697-76*3	25	100	25	57.00	48.00	4.25	0.25 MAPS	0.76
74697-6*3							0.76	
74697-6*8							1.27	
74697-61*4	10	40	10	27.00	18.00	5.15	0.25 MAPS	0.76
74697-61*4							0.76	
74697-61*9							1.27	
74697-76*4	25	100	25	57.00	48.00	5.15	0.25 MAPS	0.76
74697-6*4							0.76	
74697-6*9							1.27	

SEE SHEET 1 EC NO: UCP2013-0687 DRAWN BY: ZHANG CHECKED BY: CHEN APPROVED BY: MILLER	QUALITY SYMBOLS ▽=0 ▽=0 ▽=0	GENERAL TOLERANCES (UNLESS SPECIFIED)	DIMENSION STYLE MM ONLY	SCALE 2.5:1	DESIGN UNITS METRIC	THIRD ANGLE PROJECTION		
		mm	INCH	DRAWN BY MQWANG	DATE 2001/10/10	TITLE HSD SALES ASSEMBLY ADVANCED MATE 5 ROW SHIELD END BACKPLANE		
		4 PLACES ±	3 PLACES ±	2 PLACES ±	1 PLACE ±	0 PLACE ±	APPROVED BY CBIXLER	DATE 2001/10/12
		ANGULAR ±1/2°		MATERIAL NO.		DOCUMENT NO.		SHEET NO. 2 OF 2