

Excellent Integrated System Limited

Stocking Distributor

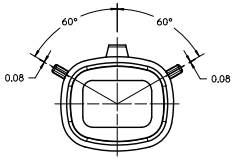
Click to view price, real time Inventory, Delivery & Lifecycle Information:

[Molex Connector Corporation](#)
[0757570221](#)

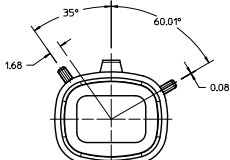
For any questions, you can email us directly:

sales@integrated-circuit.com

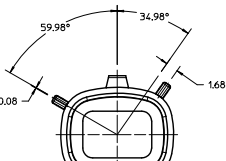
CUSTOMER SHROUD DESIGN DETAILS



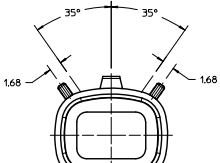
KEYING OPTION "A"
SUGGESTED COLOR: BLACK



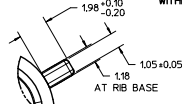
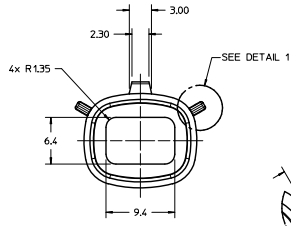
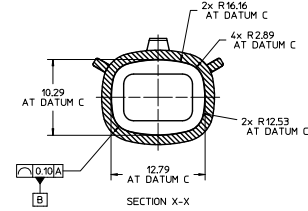
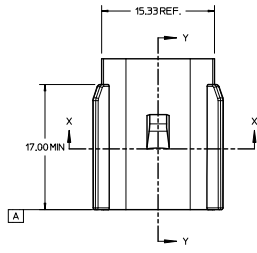
KEYING OPTION "B"
SUGGESTED COLOR: GREY



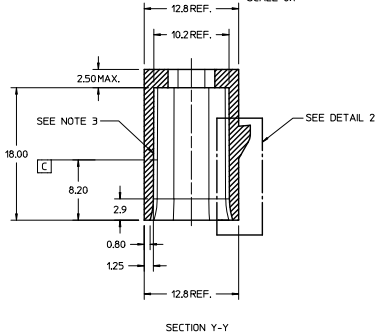
KEYING OPTION "C"
SUGGESTED COLOR: BROWN



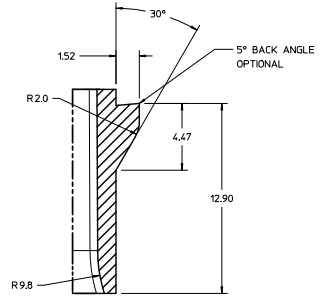
KEYING OPTION "D"
SUGGESTED COLOR: GREEN



DETAIL 1
SCALE: 8:1



SECTION Y-Y

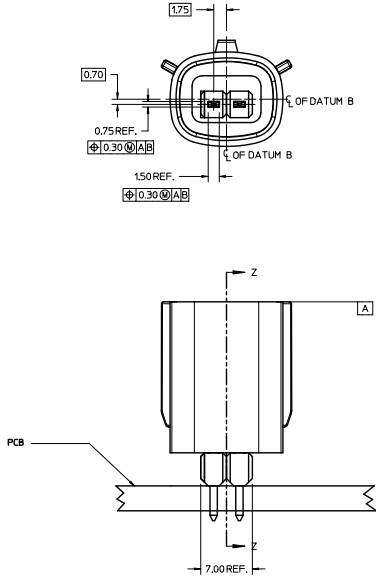


DETAIL 2
SCALE: 8:1

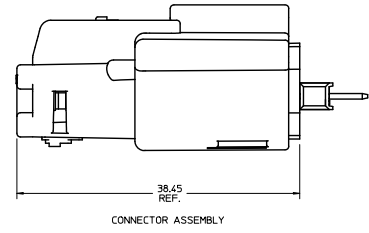
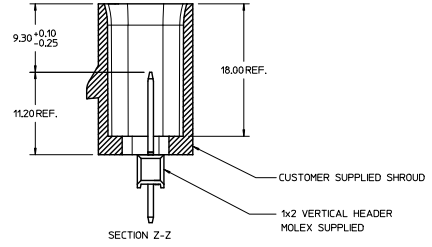
NOTES:

1. REFER TO MOLEX SALES DRAWING SD-75757-002 FOR THE HEADER ASSEMBLY PRODUCT DETAILS AND RECOMMENDED PCB LAYOUT.
2. KEYING OPTIONS A-D AND SUGGESTED COLORS COMPLY TO THE POLARIZATION STANDARDS ESTABLISHED FOR MATING WITH A MX150 FEMALE CONNECTOR.
3. INTERIOR SHROUD SURFACE MUST BE FREE OF DEFECTS AND PARTING LINES ALL AROUND TO ENSURE PROPER SEALING OF THE MATING MX150 FEMALE CONNECTOR.
4. A FULL SHROUD ON THE MATING CONNECTOR IS REQUIRED TO INSURE THE HEADER SHROUD POLARIZATION FEATURES (OPTIONS A-D) WILL FUNCTION PROPERLY. THE FULL SHROUD ALSO PREVENTS SCOOP DAMAGE TO THE HEADER CONTACTS.
5. PERMISSIBLE DRAFT ANGLE 0.25° MAXIMUM.
6. RADI ON ALL CORNERS SHOWN SHARP OR ALL UNSPECIFIED RADI 0.25 EXCEPT AS NOTED.
7. DIMENSIONS SHOWN ABOUT A CENTERLINE ARE SYMMETRICAL ABOUT THAT CENTERLINE WITHIN HALF THE SPECIFIED TOLERANCE.

INITIAL RELEASE EC NO. ICP2011-2687 DRAWN BY: DROSLA CHK: JCOMERC I APPR: JOMERC I DATE: 2011/03/11 SHEET NO. 1 OF 2	QUALITY SYMBOLS ▽=0 ▽=0	GENERAL TOLERANCES (UNLESS SPECIFIED) 4 PLACES ± 0.15 3 PLACES ± 0.13 2 PLACES ± 0.13 1 PLACE ± 0.25 ANGULAR ± 1/2°	DIMENSION STYLE MM ONLY	SCALE 4:1	DESIGN UNITS METRIC	THIRD ANGLE PROJECTION
	DRAWN BY: DROSLA DATE: 2011/03/04	CHECKED BY:	DATE: 2011/03/11	TITLE APPLICATION SPEC 1X2 MX150 HEADER SHROUD DETAILS	MOLEX INCORPORATED	SHEET NO. 1 OF 2
	APPROVED BY: JCOMERC I DATE: 2011/03/11	MATERIAL NO. 75757-1020	DOCUMENT NO. AS-75757-102	MOLEX INCORPORATED	SHEET NO. 1 OF 2	
	DRAFT WHERE APPLICABLE MUST REMAIN WITHIN DIMENSIONS SIZE D THIS DRAWING CONTAINS INFORMATION THAT IS PROPRIETARY TO MOLEX INCORPORATED AND SHOULD NOT BE USED WITHOUT WRITTEN PERMISSION					



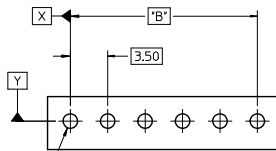
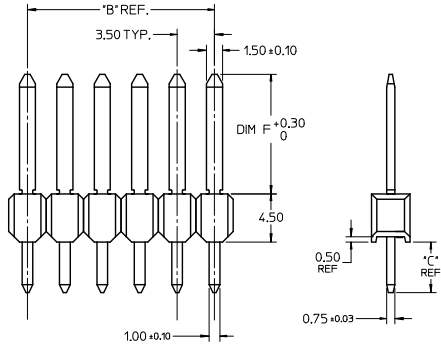
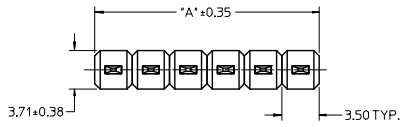
NOTES:
1. ADHERENCE TO THE HEADER APPLICATION DETAILS IS IMPERATIVE TO ENSURE PROPER SHROUD SEALING AND CONTACT ALIGNMENT WHEN MATED WITH A MX150 FEMALE CONNECTOR.



HEADER APPLICATION DETAILS

SEE SHEET 1 EC NO. 075757-2687 DRAWN BY DROSLA 2011/03/04 CHKD. J. COMERCIAL 2011/03/11 APPR. J. COMERCIAL 2011/03/11 REV. 1	QUALITY SYMBOLS	GENERAL TOLERANCES (UNLESS SPECIFIED)	DIMENSION STYLE	SCALE	DESIGN UNITS	THIRD ANGLE PROJECTION
	4 PLACES $\nabla=0$ 3 PLACES $\nabla=0$ 2 PLACES $\nabla=0$ 1 PLACE $\nabla=0$	mm INCH +--- +--- +--- +--- +--- +--- +--- +--- ANGULAR $\pm 1/2^\circ$	MM ONLY	4:1	METRIC	THIRD ANGLE PROJECTION
	DRAWN BY DATE DROSLA 2011/03/04 CHECKED BY DATE J. COMERCIAL 2011/03/11 APPROVED BY DATE J. COMERCIAL 2011/03/11	MATERIAL NO. 75757-1020 DRAFT WHERE APPLICABLE MUST REMAIN WITHIN DIMENSIONS	TITLE APPLICATION SPEC 1X2 MX150 HEADER SHROUD DETAILS	MOLEX INCORPORATED	SHEET NO. 2 OF 2	
	THIS DRAWING CONTAINS INFORMATION THAT IS PROPRIETARY TO MOLEX INCORPORATED AND SHOULD NOT BE USED WITHOUT WRITTEN PERMISSION					

13 12 11 10 9 8 7 6 5 4 3 2 1



RECOMMENDED PCB LAYOUT

NOTES:

1. TERMINAL MAT'L: ALLOY C26000, CARTRIDGE BRASS
2. WAFER MAT'L: 30% GLASS FILLED LCP, 94V-0, COLOR BLACK.
3. TERMINAL PLATING:
 OPTION 1 - 2.54µm MIN MATTE TIN OVERALL OVER 1.50µm MIN. NICKEL OVERALL
 OPTION 2 - 1.50µm MIN. NICKEL OVERALL 4.00µm MIN SELECT MATTE TIN PC TAIL AREA 0.05µm MIN SELECT GOLD CONTACT AREA
 OPTION 3 - 1.50µm MIN. NICKEL OVERALL 4.00µm MIN SELECT MATTE TIN PC TAIL AREA 0.50µm MIN. SELECT GOLD CONTACT AREA
 OPTION 4 - 1.5µm MIN MATTE TIN OVERALL OVER 1.50µm MIN. NICKEL OVERALL
4. HEADER ASSEMBLIES ARE TUBE PACKAGED PER PK-36518-342.
5. MAXIMUM SKIVING ALLOWED: 1mm.
6. MAXIMUM CUT-OFF BURR ALLOWED: 0.30mm.
7. MAXIMUM DIG MARK ALLOWED: 0.45mm.

CKT SIZE	PLATING OPTION	TOOLED		TOOLED		TOOLED		TOOLED		STATUS					
		MATERIAL NUMBER	'F' DIM	'C' DIM	MATERIAL NUMBER	'F' DIM	'C' DIM	MATERIAL NUMBER	'F' DIM	'C' DIM	'A' DIM	'B' DIM			
1 x 2	1	75757-0121			75757-0122			75757-0123			7	3.5			
	2	75757-0221			75757-0222			75757-0223							
	3	75757-0321			75757-0322			75757-0323							
	4	75757-0421			75757-0422			75757-0423							
1 x 3	1	75757-0131			75757-0132			75757-0133			10.5	7.00			
	2	75757-0231			75757-0232			75757-0233							
	3	75757-0331			75757-0332			75757-0333							
	4	75757-0431			75757-0432			75757-0433							
1 x 4	1	75757-0141	11.20	3.05	75757-0142	11.20	4.75	75757-0143	16.09	3.05	75757-0144	13.35	3.05	14.0	10.50
	2	75757-0241			75757-0242			75757-0243			75757-0244				
	3	75757-0341			75757-0342			75757-0343			75757-0344				
	4	75757-0441			75757-0442			75757-0443			75757-0444				
1 x 5	1	75757-0151			75757-0152			75757-0153			17.5	14.00			
	2	75757-0251			75757-0252			75757-0253							
	3	75757-0351			75757-0352			75757-0353							
	4	75757-0451			75757-0452			75757-0453							
1 x 6	1	75757-0161			75757-0162			75757-0163			21.0	17.50			
	2	75757-0261			75757-0262			75757-0263							
	3	75757-0361			75757-0362			75757-0363							
	4	75757-0461			75757-0462			75757-0463							

USCAR NOTE REMOVED EC NO: 12015-0777 DRAWINGS: 2015/06/15 CHKD:BR02 2015/07/02 APPR:KERRASUD 2015/07/21	QUALITY SYMBOLS	GENERAL TOLERANCES (UNLESS SPECIFIED)	DIMENSION STYLE	SCALE	DESIGN UNITS	THIRD ANGLE PROJECTION
	▽=0	mm INCH	MM ONLY	4:1	METRIC	
	▽=0	4 PLACES ± --- ± ---	DRAWN BY DATE			
	▽=0	3 PLACES ± --- ± ---	IMC LLELL 1/24/06			
	2 PLACES ± 0.13 ± ---	CHECKED BY DATE				
	1 PLACE ± 0.25 ± ---	IMC LLELL 1/24/06				
	0 PLACE ± ±	APPROVED BY DATE				
	ANGULAR ±1/2°	BANAK IS 1/24/06				
	DRAFT WHERE APPLICABLE MUST REMAIN WITHIN DIMENSIONS	MATERIAL NO.	DOCUMENT NO.			
		SEE CHART	SD-75757-010			
		SIZE				
		AZ				

molex

MX150 SINGLE ROW UNSHROUDED VERTICAL HEADER ASSEMBLY

13 12 11 10 9 8 7 6 5 4 3 2 1