

## Excellent Integrated System Limited

Stocking Distributor

Click to view price, real time Inventory, Delivery & Lifecycle Information:

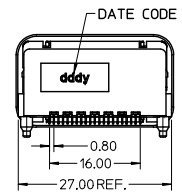
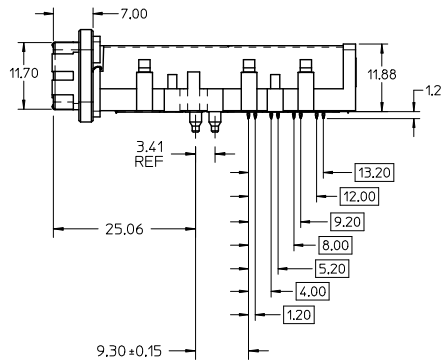
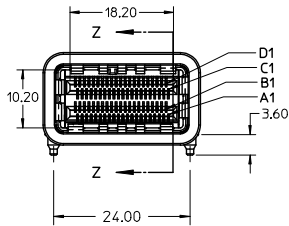
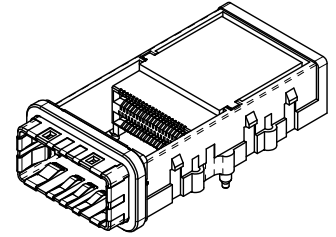
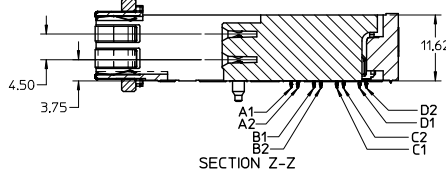
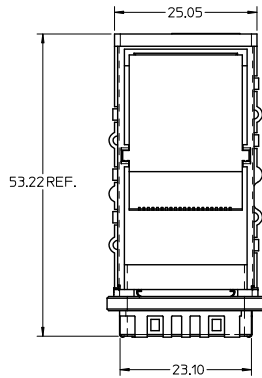
[Molex Connector Corporation](#)  
[0761050185](#)

For any questions, you can email us directly:

[sales@integrated-circuit.com](mailto:sales@integrated-circuit.com)

MATERIAL NO.	KEY OPTION	TAIL PLATING
<del>76105-0184</del>	<del>LEFT</del>	<del>TIN / LEAD</del>
76105-0185	LEFT	TIN

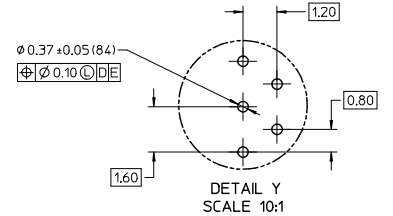
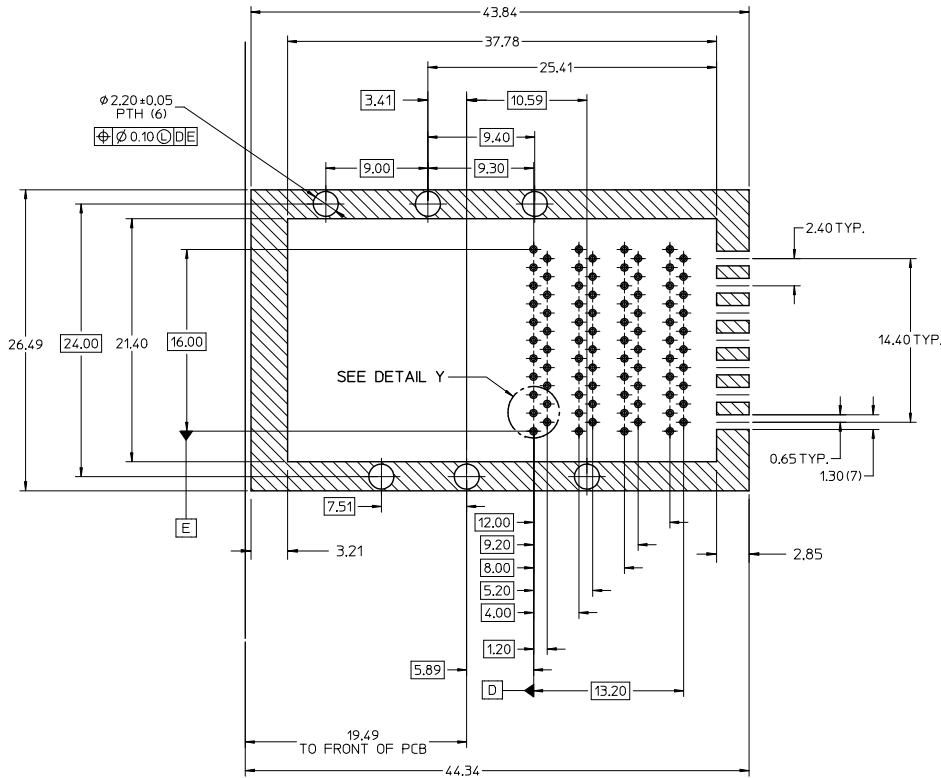
OBSOLETE



NOTES:

- MATERIALS:  
CONNECTOR HOUSING: HIGH TEMPERATURE THERMOPLASTIC  
GLASS-FILLED, UL 94V-0  
EMI HOUSING: NICKEL PLATED DIE CAST ALLOY  
EMI GASKET: CONDUCTIVE POLYMER  
TERMINALS: COPPER ALLOY
- PLATING:  
CONTACT AREA: 0.764mm MIN. GOLD OVER 2.544mm MIN. NICKEL  
TIN/LEAD TAIL AREA: 0.764mm - 1.524mm TIN/LEAD (90/10)  
TIN TAIL AREA: 0.764mm - 1.524mm TIN  
OVER 1.274mm MIN NICKEL
- PACKAGING SPECIFICATION: TRAY PACK PER PK-76105-001.
- MOUNTING HARDWARE REQUIRED: M2x0.4 CAP SCREWS (4)  
MOUNTING SCREW LENGTH: BOARD THICKNESS + 4mm MAX

REVISED REC NO: UCP2013-0617 2017/08/28 DRAWING PRATT CHK: KOBANKI S APPR: KOBANKI S 2017/08/29	QUALITY SYMBOLS ▽=0 ▽=0	GENERAL TOLERANCES (UNLESS SPECIFIED)		DIMENSION STYLE MM ONLY		SCALE 2:1	DESIGN UNITS METRIC	THIRD ANGLE PROJECTION	
		4 PLACES ± --- ± --- 3 PLACES ± --- ± --- 2 PLACES ± 0.25 ± --- 1 PLACE ± --- ± ---	mm INCH	DRAWN BY JLONG	DATE 2009/10/13	TITLE IPASS PLUS HSC 84 HIGH SPEED CHANNEL 0.8MM I/O			
		ANGULAR ± 1/2°		CHECKED BY JLONG	DATE 2009/10/13	MOLEX INCORPORATED			
DRAFT WHERE APPLICABLE MUST REMAIN WITHIN DIMENSIONS		MATERIAL NO. SEE CHART		DOCUMENT NO. SD-76105-184		SHEET NO. 1 OF 4			



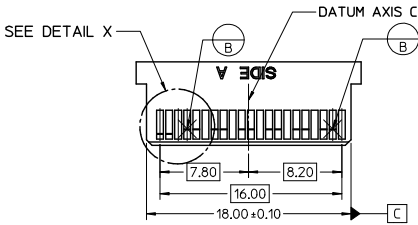
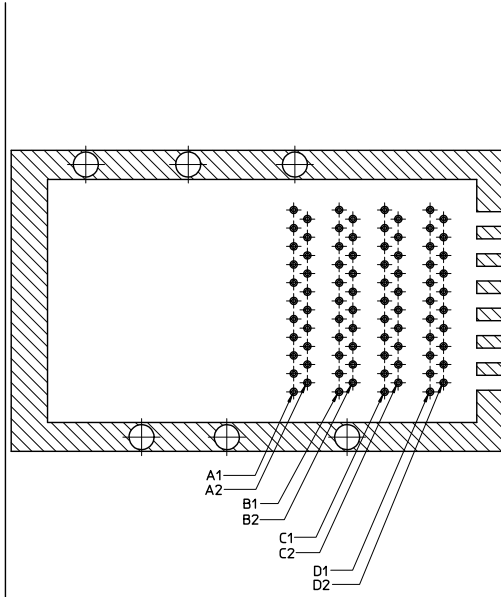
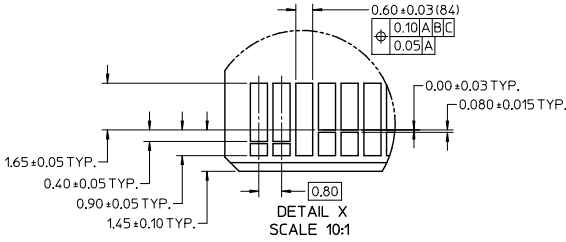
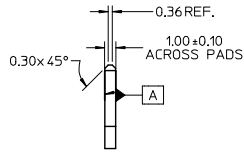
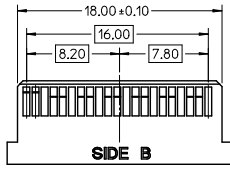
**NOTES:**

- CROSS-HATCHED AREA TO BE CONDUCTIVE ON THE PCB.
- CROSS-HATCHED AREA MUST BE INCORPORATED IN THE FLAT ROCK PRESS-FIT TOOLING.
- RECOMMENDED DRILL SIZE FOR 0.37 $\phi$  FINISHED PTH IS 0.48-0.50 mm $\phi$  (.0189-.0200 in $\phi$ (#76 DRILL))
- RECOMMENDED ANNULAR RING AROUND 0.37 $\phi$  FINISHED PTH IS 0.73 $\phi$
- MINIMUM RECOMMENDED SPACING: 26.50

RECOMMENDED PCB LAYOUT  
COMPONENT SIDE SHOWN

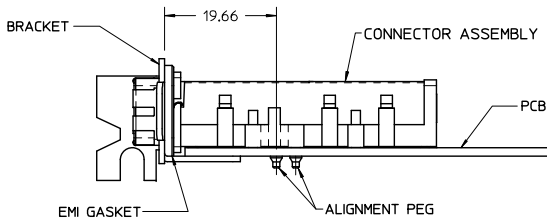
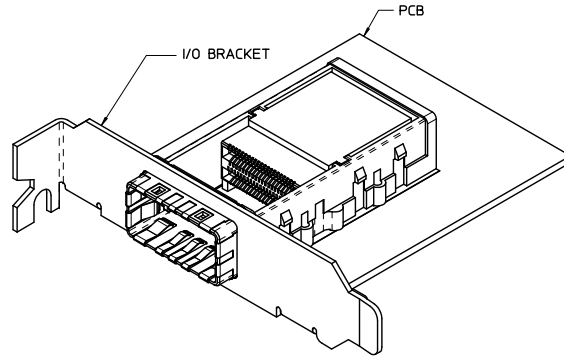
PCB THICKNESS: 1.57mm MIN.

SEE SHEET 1 EC NO: UCP2013-0617 DRAWING PRAT: 2017/08/28 CHK'D BANKA S: 2017/08/28 APPR'D BANKA S: 2017/08/30 DESCRIPTION:	QUALITY SYMBOLS	GENERAL TOLERANCES (UNLESS SPECIFIED)	DIMENSION STYLE	SCALE	DESIGN UNITS	THIRD ANGLE PROJECTION															
	$\nabla=0$ $\sphericalangle=0$	<table border="1"> <tr><th colspan="2">mm</th><th>INCH</th></tr> <tr><td>4 PLACES</td><td>±---</td><td>±---</td></tr> <tr><td>3 PLACES</td><td>±---</td><td>±---</td></tr> <tr><td>2 PLACES</td><td>±0.25</td><td>±---</td></tr> <tr><td>1 PLACE</td><td>±---</td><td>±---</td></tr> </table> ANGULAR ±1/2°	mm		INCH	4 PLACES	±---	±---	3 PLACES	±---	±---	2 PLACES	±0.25	±---	1 PLACE	±---	±---	MM ONLY DRAWN BY: JLONG DATE: 2009/10/13 CHECKED BY: JLONG DATE: 2009/10/13 APPROVED BY: DATE:	4:1	METRIC	TITLE: IPASS PLUS HSC 84 HIGH SPEED CHANNEL 0.8MM I/O MOLEX INCORPORATED
	mm		INCH																		
	4 PLACES	±---	±---																		
3 PLACES	±---	±---																			
2 PLACES	±0.25	±---																			
1 PLACE	±---	±---																			
DRAFT WHERE APPLICABLE MUST REMAIN WITHIN DIMENSIONS	SEE CHART	MATERIAL NO.	DOCUMENT NO.	SHEET NO.																	
				2 OF 4																	

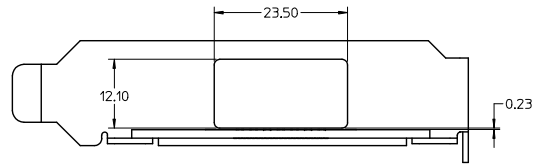


- NOTES:  
 1. 0.03 MINIMUM KEEP OUT FOR SOLDER MASK AROUND ALL PADS  
 2. DATUM B TARGETS ARE DEFINED BY THE RESPECTIVE PAD CENTER LINES AND THE LEADING EDGE OF THE TARGET PADS

SEE SHEET 1 EC NO: UCP2013-0617 DRAWING PRAT: 2017/08/28 CHK'D BANKIT'S 2017/08/28 APPR'D BANKIT'S 2017/08/28 REV DESCRIPTION	QUALITY SYMBOLS	GENERAL TOLERANCES (UNLESS SPECIFIED)	DIMENSION STYLE	SCALE	DESIGN UNITS	THIRD ANGLE PROJECTION
	▽=0 ▽=0	mm INCH 4 PLACES ± --- ± --- 3 PLACES ± --- ± --- 2 PLACES ± 0.25 ± --- 1 PLACE ± --- ± --- ANGULAR ± 1/2°	MM ONLY	4:1	METRIC	DRAWN BY: JLONG DATE: 2009/10/13 CHECKED BY: JLONG DATE: 2009/10/13 APPROVED BY: DATE:
	DRAFT WHERE APPLICABLE MUST REMAIN WITHIN DIMENSIONS	SEE CHART	MATERIAL NO. SD-76105-184	TITLE IPASS PLUS HSC 84 HIGH SPEED CHANNEL 0.8MM I/O	MOLEX INCORPORATED	SHEET NO. 3 OF 4
	SIZE C	THIS DRAWING CONTAINS INFORMATION THAT IS PROPRIETARY TO MOLEX INCORPORATED AND SHOULD NOT BE USED WITHOUT WRITTEN PERMISSION				



ASSEMBLED VIEW



I/O BRACKET CUT-OUT

(NOT SUPPLIED)

SEE SHEET 1 EC NO: UCP2013-0617 DRAWING PRAT: 2017/08/28 CHK'D BANKA'S: 2017/08/28 APPR'D BANKA'S: 2017/08/30	QUALITY SYMBOLS ▽=0 ▽=0	GENERAL TOLERANCES (UNLESS SPECIFIED)		DIMENSION STYLE MM ONLY		SCALE 2:1	DESIGN UNITS METRIC	THIRD ANGLE PROJECTION	
			mm	INCH	DRAWN BY JLONG	DATE 2009/10/13	TITLE IPASS PLUS HSC 84 HIGH SPEED CHANNEL 0.8MM I/O		
		4 PLACES	±---	±---	CHECKED BY JLONG	DATE 2009/10/13	MOLEX INCORPORATED SD-76105-184		
		3 PLACES	±---	±---	APPROVED BY	DATE			
2 PLACES	±0.25	±---	DRAFT WHERE APPLICABLE MUST REMAIN WITHIN DIMENSIONS		THIS DRAWING CONTAINS INFORMATION THAT IS PROPRIETARY TO MOLEX INCORPORATED AND SHOULD NOT BE USED WITHOUT WRITTEN PERMISSION				
1 PLACE	±---	±---							
		ANGULAR ±1/2°							