

Excellent Integrated System Limited

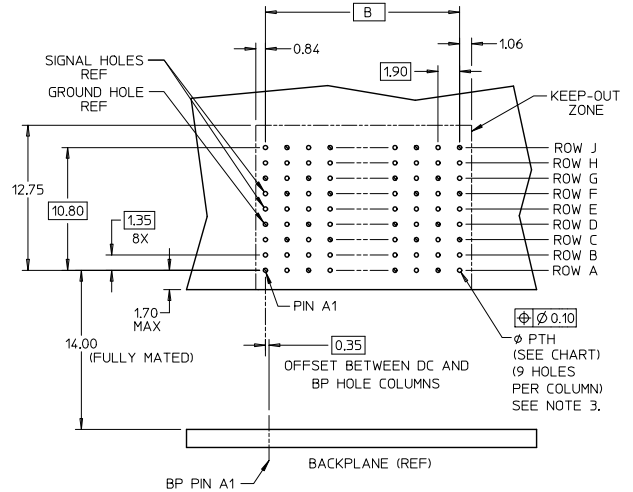
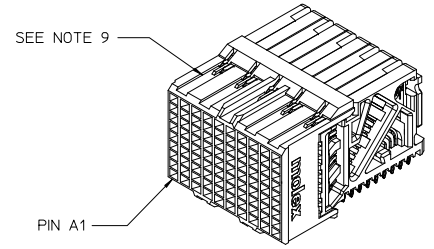
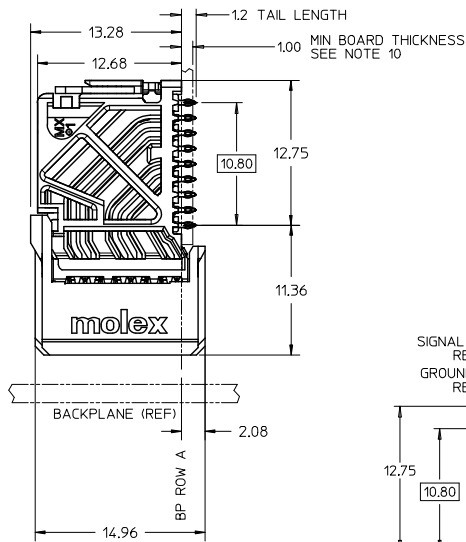
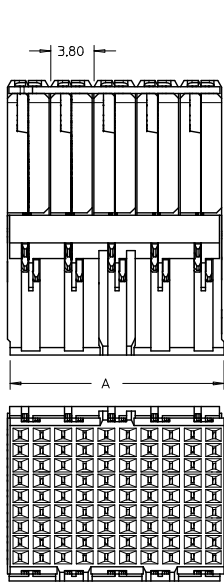
Stocking Distributor

Click to view price, real time Inventory, Delivery & Lifecycle Information:

[Molex Connector Corporation](#)
[0761701006](#)

For any questions, you can email us directly:

sales@integrated-circuit.com



DAUGHTERCARD HOLE PATTERN (CONNECTOR SIDE)

NOTES:

1. MATERIALS: HOUSING - LIQUID CRYSTAL POLYMER (LCP), GLASS-FILLED, UL94V-0
TERMINALS - HIGH PERFORMANCE COPPER ALLOY
2. FINISH: 30µM SELECTIVE GOLD IN CONTACT AREA, SELECTIVE TIN ON PCB TAILS, NICKEL OVERALL.
3. REFER TO MOLEX PRODUCT SPEC PS-76060-999 FOR PERFORMANCE SPECIFICATIONS AND ADDITIONAL PCB INFORMATION.
4. EACH SIGNAL WAFER CONTAINS 2 COLUMNS OF TERMINALS.
5. PRODUCT IS PACKAGED PER PK-70873-591.
6. THIS PART CONFORMS TO CLASS B REQUIREMENTS OF COSMETIC SPEC PS-45499-002.
7. REFER TO MOLEX SALES DRAWING SD-76165-001 FOR THE MATING HEADERS AND SD-76410-001 FOR THE MATING RAM CONNECTORS.
8. REFER TO MOLEX PCB ROUTING GUIDE AS-76060-990 FOR ANTI PAD AND ROUTING RECOMMENDATIONS.
9. PART NUMBER 76170-1020 SHOWN ON DRAWING. KEYING FEATURES WILL CHANGE WITH COLUMN SIZE.
10. MINIMUM BOARD THICKNESS IS 1.00 mm FOR COMPLIANT PIN FUNCTIONALITY.

STANDARDIZATION EC NO: UCP/2015-5285 DRAWN: JUPESKY 2013/06/11 CHKD: TELLO APPR: TELLO 2013/07/18	QUALITY SYMBOLS ▽=0 ▽=0 ▽=0	GENERAL TOLERANCES (UNLESS SPECIFIED)	DIMENSION STYLE		SCALE 4:1	DESIGN UNITS METRIC	THIRD ANGLE PROJECTION
			mm	INCH			
E1	REV	4 PLACES ±	3 PLACES ±	DRAWN BY JLAURX	DATE 2008/01/29	TITLE IMPACT 100 OHM DC 3 PAIR SIGNAL MODULE UNGUIDED SALES DRAWING molex	
		2 PLACES ±0.13	1 PLACE ±0.25	CHECKED BY TELO	DATE 2008/01/29		
		0 PLACE ±	APPROVED BY JLAURX		DATE 2008/01/29	DOCUMENT NO. SD-76170-001	
		ANGULAR ±1/2°		MATERIAL NO.		SHEET NO. 1 OF 2	
		DRAFT WHERE APPLICABLE MUST REMAIN WITHIN DIMENSIONS		SEE CHART		THIS DRAWING CONTAINS INFORMATION THAT IS PROPRIETARY TO MOLEX INCORPORATED AND SHOULD NOT BE USED WITHOUT WRITTEN PERMISSION	

MATERIAL NUMBER	# OF COLUMNS	# OF DIFF PAIR	DIM 'A' MAX	DIM 'B'	PTH ϕ
76170-*006	6	18	11.40	9.50	0.46 +0.05
76170-*008	8	24	15.20	13.30	
76170-*010	10	30	19.00	17.10	
76170-*016	16	48	30.40	28.50	0.39 +0.05
76170-*036	6	18	11.40	9.50	
76170-*038	8	24	15.20	13.30	
76170-*020	10	30	19.00	17.10	
76170-*026	16	48	30.40	28.50	

76170-*0**

1 = OPEN LEAD-FREE

OF COLUMNS

06 = 6 COL 0.46 PTH
 08 = 8 COL 0.46 PTH
 10 = 10 COL 0.46 PTH
 16 = 16 COL 0.46 PTH
 20 = 10 COL 0.39 PTH
 26 = 16 COL 0.39 PTH
 36 = 6 COL 0.39 PTH
 38 = 8 COL 0.39 PTH

SEE SHEET 1 EC NO: UCP2019-5285 DRAWN: JUPESKY 2013/06/11 CHKD: APPR: TELO 2013/07/18 REV	QUALITY SYMBOLS	GENERAL TOLERANCES (UNLESS SPECIFIED)	DIMENSION STYLE	SCALE	DESIGN UNITS	THIRD ANGLE PROJECTION	
		mm INCH 4 PLACES ± --- ± --- 3 PLACES ± --- ± --- 2 PLACES ± 0.13 ± --- 1 PLACE ± 0.25 ± --- 0 PLACE ± ±	MM ONLY	4:1	METRIC		
	DESCRIPTION	ANGULAR ±1/2°	DRAWN BY	DATE	TITLE		
	DRAFT WHERE APPLICABLE MUST REMAIN WITHIN DIMENSIONS	MATERIAL NO. SEE CHART	CHECKED BY TELO	DATE 2008/01/29	IMPACT 100 OHM DC 3 PAIR SIGNAL MODULE UNGUIDED SALES DRAWING 		
			APPROVED BY	DATE	DOCUMENT NO.	SHEET NO.	
			JLAURX	2008/01/29	SD-76170-001	2 OF 2	
			THIS DRAWING CONTAINS INFORMATION THAT IS PROPRIETARY TO MOLEX INCORPORATED AND SHOULD NOT BE USED WITHOUT WRITTEN PERMISSION				