

## Excellent Integrated System Limited

Stocking Distributor

Click to view price, real time Inventory, Delivery & Lifecycle Information:

[Molex Connector Corporation](#)  
[0764501908](#)

For any questions, you can email us directly:

[sales@integrated-circuit.com](mailto:sales@integrated-circuit.com)

MATERIAL NUMBER	# OF COLUMNS	# OF DIFF. PAIR	DM 'A' MAX	DM 'B'
76450-11**	10	20	19.00	17.10
76450-16**	16	32	30.40	28.50

**76450-\*\*\***

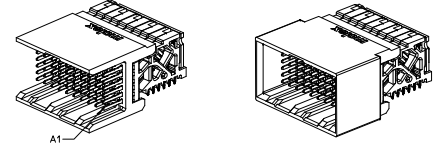
MODULE TYPE  
1 = UNGUIDED, LEAD-FREE

# OF COLUMNS  
1 = 10 COL  
6 = 16 COL

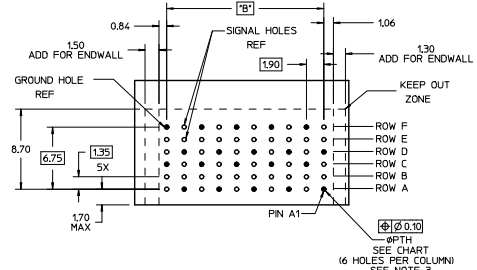
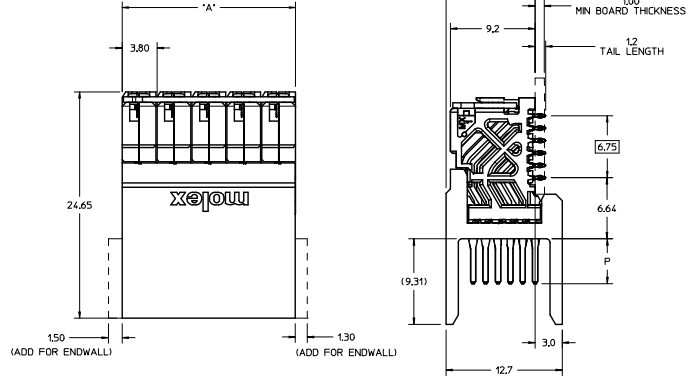
PIN LENGTH (P)  
4 = 4.90 (0.46 PTH)  
5 = 5.50 (0.46 PTH)  
7 = 4.90 (0.39 PTH)  
8 = 5.50 (0.39 PTH)

END WALL OPTIONS  
0 = OPEN ENDS  
1 = LEFT ENDWALL  
2 = DUAL ENDWALL  
3 = RIGHT ENDWALL

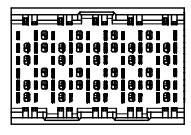
- NOTES:
1. MATERIALS: HOUSING - LIQUID CRYSTAL POLYMER (LCP), GLASS-FILLED, UL94V-0  
TERMINALS - HIGH PERFORMANCE COPPER ALLOY
  2. FINISH: 30µm SELECTIVE GOLD IN CONTACT AREA, SELECTIVE TIN ON PCB TAILS; NICKEL OVERALL
  3. FOR FURTHER INFORMATION SEE PRODUCT SPECIFICATION PS-76060-999.
  4. EACH SIGNAL WAFER CONTAINS 2 COLUMNS OF TERMINALS.
  5. PRODUCT TO BE PACKAGED PER PACKAGING SPECIFICATION PK-70873-077.
  6. THIS PART CONFORMS TO CLASS B REQUIREMENTS OF COSMETIC SPEC PS-45499-002.
  7. REFER TO MOLEX SALES DRAWING SD-76460-001 FOR MATING DAUGHTERCARDS.
  8. REFER TO MOLEX PCB ROUTING GUIDE AS-76060-990 FOR ANTIPOP AND ROUTING RECOMMENDATIONS.



OPEN ENDED OPTION      DUAL ENDWALL OPTION

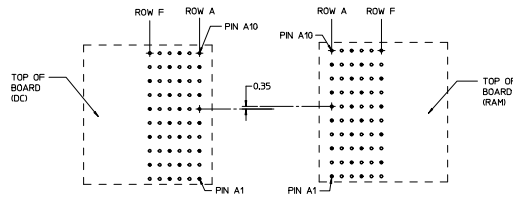
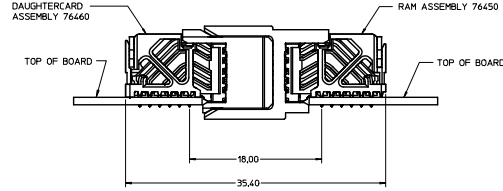


RAM HOLE PATTERN  
(CONNECTOR SIDE)



QUALITY SYMBOLS	GENERAL TOLERANCES (UNLESS SPECIFIED)		DIMENSION STYLE		SCALE	DESIGN UNITS	THIRD ANGLE PROJECTION
	mm	INCH	MM ONLY	DATE			
▽=0	4 PLACES ±---	±---	JJONIAK	2009/06/05	5:1	METRIC	THIRD ANGLE PROJECTION
▽=0	3 PLACES ±---	±---	CHECKED BY	DATE	<b>IMPACT 2 PAIR RAM</b> <b>UNGUIDED SIGNAL MODULE</b> <b>SALES DRAWING</b> 		
▽=0	2 PLACES ±0.13	±---	JLAURX	2009/06/05			
▽=0	1 PLACE ±0.25	±---	APPROVED BY	DATE			
▽=0	0 PLACE ±---	±---	JLAURX	2010/02/09	MATERIAL NO.      DOCUMENT NO.      SHEET NO. SEE TABLE      SD-76450-001      1 OF 2 DRAFT WHERE APPLICABLE      THIS DRAWING CONTAINS INFORMATION THAT IS PROPRIETARY TO MOLEX MUST REMAIN      INCORPORATED AND SHOULD NOT BE USED WITHOUT WRITTEN PERMISSION WITHIN DIMENSIONS		

COPLANAR APPLICATION



COPLANAR MATED SIGNAL PATHS

DC PIN A10 ----- RAM PIN A10  
 |  
 |  
 DC PIN A1 ----- RAM PIN A1

SEE SHEET 1 DEC. NO. 067204-4388 DRAWN: GONZALEZ01 28/04/02 CHKD: B3 APPR: [Signature] REV: [Signature]	QUALITY SYMBOLS	GENERAL TOLERANCES (UNLESS SPECIFIED)	DIMENSION STYLE MM ONLY	SCALE 5:1	DESIGN UNITS METRIC	THIRD ANGLE PROJECTION
	▽=0	mm INCH	DRAWN BY JJONIAK	DATE 2009/06/05	TITLE IMPACT 2 PAIR RAM UNGUIDED SIGNAL MODULE SALES DRAWING	
	▽=0	4 PLACES ±--- ±---	CHECKED BY JLAURX	DATE 2009/06/05		
	▽=0	3 PLACES ±--- ±---	APPROVED BY JLAURX	DATE 2010/02/09		
▽=0	2 PLACES ±0.13 ±---					
		1 PLACE ±0.25 ±---				
		0 PLACE ±--- ±---				
		ANGULAR ±1/2°	MATERIAL NO.	DOCUMENT NO.	SD-76450-001	SHEET NO. 2 OF 2
		DRAFT WHERE APPLICABLE MUST REMAIN WITHIN DIMENSIONS	SIZE D	THIS DRAWING CONTAINS INFORMATION THAT IS PROPRIETARY TO MOLEX INCORPORATED AND SHOULD NOT BE USED WITHOUT WRITTEN PERMISSION		