

## Excellent Integrated System Limited

Stocking Distributor

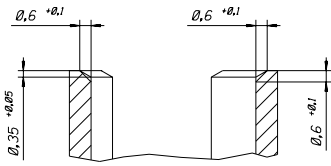
Click to view price, real time Inventory, Delivery & Lifecycle Information:

[Molex Connector Corporation](#)

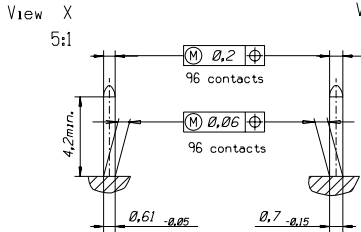
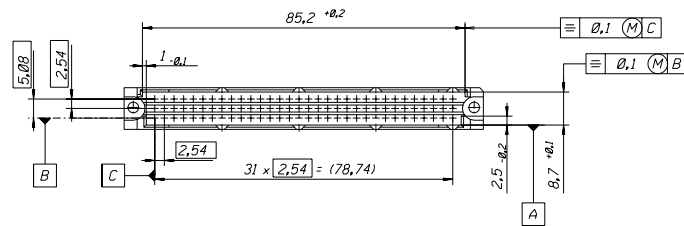
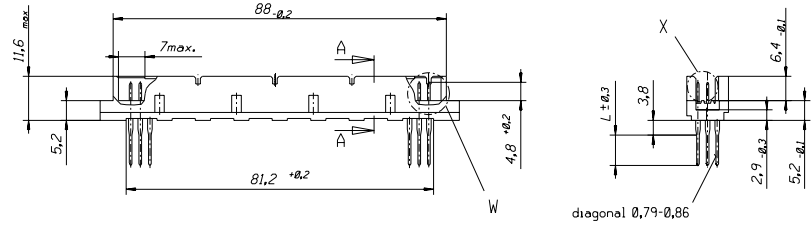
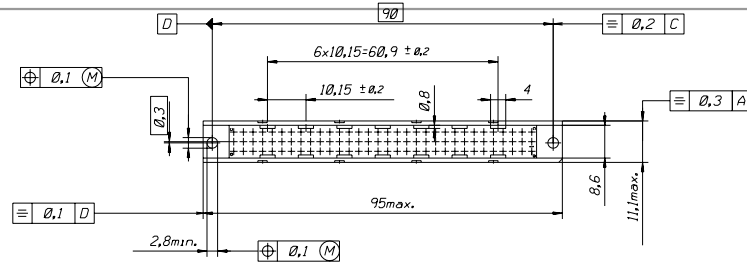
[0850130476](#)

For any questions, you can email us directly:

[sales@integrated-circuit.com](mailto:sales@integrated-circuit.com)



section A-A  
5:1



View W  
5:1

FIRST ANGLE PROJECTION

REVISE ONLY ON CAD SYSTEM

SH. REV.

EON MC2003-0052	UNLESS OTHERWISE SPECIFIED TOLERANCES: ANGULAR 2°	DRWG BY	CO	SIGN	CAD/CAM PROJECT NAME	THIS DRAWING CONTAINS INFORMATION THAT IS PROPRIETARY TO MOLEX INC. & SHOULD NOT BE USED WITHOUT WRITTEN PERMISSION
	9 PLACE ±	±	CHK'D BY	KN	TITLE	96 pos. Male connector DIN 41612 style R (C-Pin) Dimensions
	2 PLACE ±	±	APP'D BY		MOLEX EUROPE	SHEET NO. DATE 1 OF 3 91/11/28
	1 PLACE ±	±	SCALE	1:1	PART NO.	see sh. no. 2 of 3
DESIGN DIMENSION	<input checked="" type="checkbox"/> MM				DWG NO.	610-6043-201
EQUIVALENT DIMENSION	<input type="checkbox"/> IN.				SIZE	B
IF TWO DIMENSIONS ARE SHOWN THE UPPER IS THE DESIGN DIMENSION LOWER IS SECONDARY						