



Distributor of Molex Connector Corporation: Excellent Integrated System Limited
Datasheet of 0873400695 - Connector Receptacle 6 Position 0.079" (2.00mm) Gold Surface
Mount

Contact us: sales@integrated-circuit.com Website: www.integrated-circuit.com

Excellent Integrated System Limited

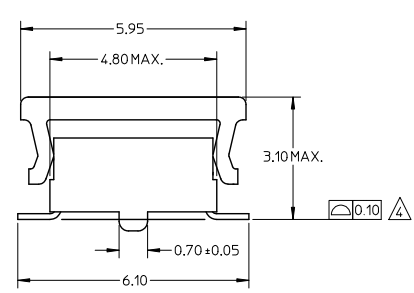
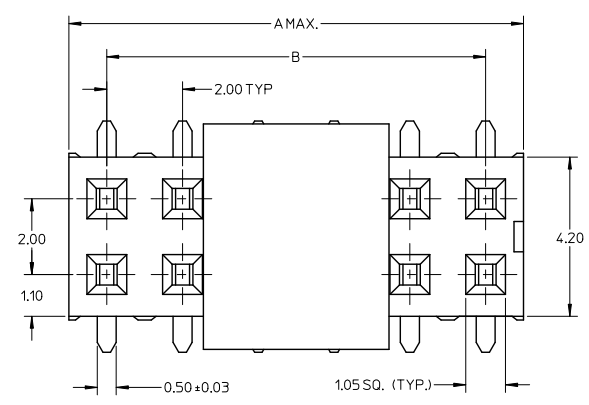
Stocking Distributor

Click to view price, real time Inventory, Delivery & Lifecycle Information:

[Molex Connector Corporation](#)
[0873400695](#)

For any questions, you can email us directly:
sales@integrated-circuit.com

Contact us: sales@integrated-circuit.com Website: www.integrated-circuit.com



| PART NUMBER W/CAP IN TUBE | CKT SIZE | DIM. A | DIM. B |
|---------------------------|----------|--------|--------|
| 87340-04*5 | 4 | 4.00 | 2.00 |
| 87340-06*5 | 6 | 6.00 | 4.00 |
| 87340-08*5 | 8 | 8.00 | 6.00 |
| 87340-10*5 | 10 | 10.00 | 8.00 |
| 87340-12*5 | 12 | 12.00 | 10.00 |
| 87340-14*5 | 14 | 14.00 | 12.00 |
| 87340-16*5 | 16 | 16.00 | 14.00 |
| 87340-18*5 | 18 | 18.00 | 16.00 |
| 87340-20*5 | 20 | 20.00 | 18.00 |

PART NO. LEGEND

87340-****

- 5 - TUBE
- 6 - T&R

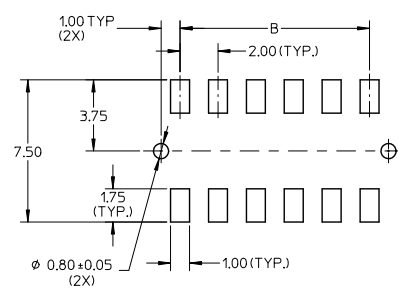
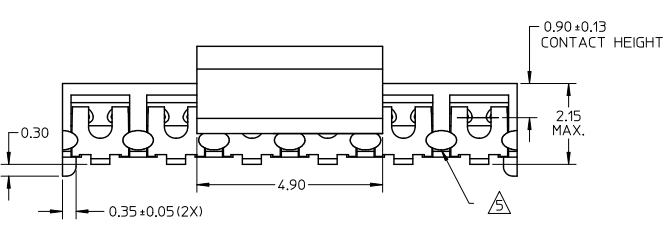
PACKAGING

PLATING SEE NOTE 3

CIRCUIT SIZE

NOTES:

- FOR ILLUSTRATION PURPOSES, DRAWING SHOWS PART WITH 12 CIRCUIT SIZE.
- MATERIAL: HOUSING: LCP GLASS FILLED, UL 94V-0 SUITABLE FOR SURFACE-MOUNT SOLDERING PROCESS, COLOR BLACK
TERMINAL: PHOSPHOR BRONZE ALLOY.
PLATING- 9 : 0.38µM MINIMUM GOLD PLATE AT CONTACT AREA, AND 1.90µM MINIMUM TIN PLATE AT P.C TAIL AREA, BOTH OVER 1.27µM MINIMUM NICKEL OVERALL.
3 : 0.05-0.25µM GOLD PLATE AT CONTACT AREA, AND 1.90µM MINIMUM TIN PLATE AT P.C TAIL AREA, BOTH OVER 1.27µM MINIMUM NICKEL OVERALL.
COPLANARITY OF P.C TAIL TO BE MEASURED BY RESTING THE PART ON A FLAT GAGE SURFACE.
THIS AREA OF PART TO BE HEAT-STAKED TO RETAIN CONTACTS.
POSITION OF CAP TO BE LOCATED AT CENTER OF DIMENSION 'A' REGARDLESS OF CIRCUIT SIZE.
PRODUCT SPECIFICATION PS-87340 APPLIES.
PART TO BE PACKAGED IN TAPE-&-REEL. SEE SHEET 2 FOR PACKAGING DETAILS.
CONTACT FACTORY FOR PARTS AVAILABILITY.

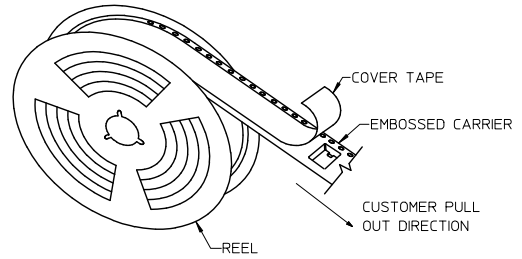
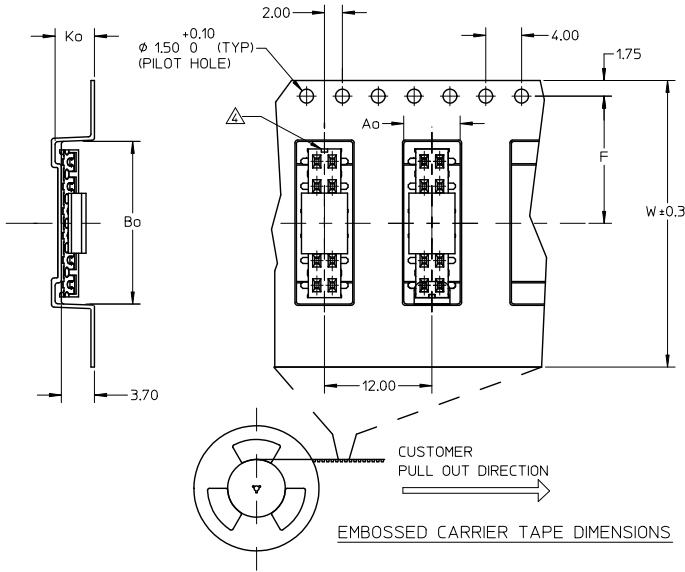


RECOMMENDED SOLDER PAD DESIGN

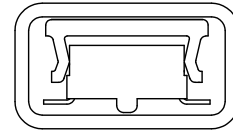
| | | | | | | | | | | |
|--|-----------|-------------|-------------------------------|---------------------------------------|------|--------------------------------|--------------------|---|------------------------|------------------------|
| ADD AU FLASH OPTION EC NO: S2012-0433 DRAWN: KWANG CHKD: ATSEE APPR: HLONG | REV D3 | DESCRIPTION | QUALITY SYMBOLS ▽=0 ▽=0 | GENERAL TOLERANCES (UNLESS SPECIFIED) | | DIMENSION STYLE MM ONLY | | SCALE NTS | DESIGN UNITS METRIC | THIRD ANGLE PROJECTION |
| | | | | mm | INCH | DRAWN BY JWAN | DATE 1995/01/25 | TITLE MGRID, VLPR II TOP ENTRY RECEPT., SMT W/CAP FOR PICK-&-PLACE | | |
| DRAFT WHERE APPLICABLE MUST REMAIN WITHIN DIMENSIONS | | | | MATERIAL NO. SEE TABLE | | DOCUMENT NO. SD-87340-***92 | | SHEET NO. 1 OF 2 | | |

Contact us: sales@integrated-circuit.com Website: www.integrated-circuit.com

| PART NO. W/CAP IN TAPE/REEL | PKT. SIZE | Ao | Bo | F | W | Ko |
|--------------------------------|--------------|------|-------|-------|-------|------|
| 87340-04*6 | 4 | 6.70 | 5.30 | 11.50 | 24.00 | 5.30 |
| 87340-06*6 | 6 | 6.50 | 6.50 | 7.50 | 16.00 | 4.50 |
| 87340-08*6 | 8 | 6.70 | 8.40 | 11.50 | 24.00 | 5.30 |
| 87340-10*6 | 10 | 6.70 | 10.40 | 11.50 | 24.00 | 5.30 |
| 87340-12*6 | 12 | 6.60 | 12.40 | 11.50 | 24.00 | 4.40 |
| 87340-14*6 | 14 | 6.60 | 14.30 | 11.50 | 24.00 | 4.40 |
| 87340-16*6 | 16 | 6.60 | 16.30 | 11.50 | 24.00 | 4.40 |
| 87340-20*6 | 20 | 6.70 | 20.50 | 20.20 | 44.00 | 5.30 |



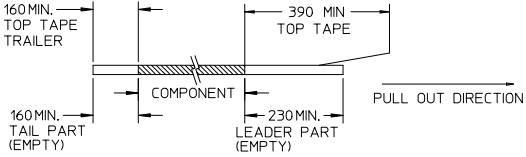
TAPE AND REEL ASSEMBLY SHOWN IS FOR ILLUSTRATION ONLY.



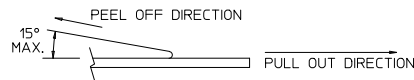
PART IN TUBE VIEW

NOTES:

1. LEADER AND TRAILER TAPE



2. PEELING OFF FORCE OF THE TOP TAPE: 20-80gf.
(PEELING DIRECTION AS SHOWN IN FOLLOWING FIGURE)



3. PACKAGING STANDARD IS AS PER EIA-481.

4. TAPE & REEL QUANTITY = 1000 PCS/REEL

△ NO FIX ORIENTATION OF ASSEMBLY PART IN T&R.

| ADD AU FLASH OPTION EC NO.: S2012-0433 DRAWN: KWANG CHK: DATSEE APPR: HLONG | REV D3 | DESCRIPTION | QUALITY SYMBOLS ▽=0 ▽=0 | GENERAL TOLERANCES (UNLESS SPECIFIED) | | DIMENSION STYLE MM ONLY | | SCALE NTS | DESIGN UNITS METRIC | THIRD ANGLE PROJECTION | |
|---|-----------|-------------|-------------------------------|--|--------|----------------------------|--|--------------------|--------------------------------|------------------------|---|
| | | | | mm | INCH | DRAWN BY JWAN | DATE 1995/01/25 | | | | TITLE MGRID, VLPR II TOP ENTRY RECEPT., SMT W/CAP FOR PICK-&-PLACE |
| | | | | 4 PLACES | ± --- | ± --- | CHECKED BY SKTOH | DATE 1995/01/25 | Molex MOLEX INCORPORATED | | |
| | | | | 3 PLACES | ± --- | ± --- | APPROVED BY RWONG | DATE 1995/01/25 | | | |
| | | | | 2 PLACES | ± 0.20 | ± --- | MATERIAL NO. SEE TABLE | | DOCUMENT NO. SD-87340-**-92 | SHEET NO. 2 OF 2 | |
| | | | | 1 PLACE | ± --- | ± --- | SIZE A3 THIS DRAWING CONTAINS INFORMATION THAT IS PROPRIETARY TO MOLEX INCORPORATED AND SHOULD NOT BE USED WITHOUT WRITTEN PERMISSION | | | | |
| | | | | DRAFT WHERE APPLICABLE MUST REMAIN WITHIN DIMENSIONS | | | | | | | |