

Excellent Integrated System Limited

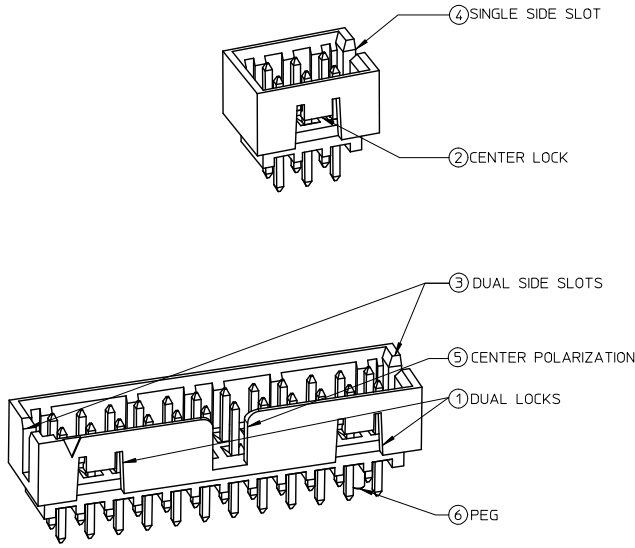
Stocking Distributor

Click to view price, real time Inventory, Delivery & Lifecycle Information:

[Molex Connector Corporation](#)
[0878313821](#)

For any questions, you can email us directly:
sales@integrated-circuit.com

FEATURES SELECTION GUIDE



CIRCUIT SIZE	FEATURES						SHEET NO
	FRICTION LOCKS		SIDE SLOTS		⑤ CENTER POLARIZATION	⑥ PEG	
	① DUAL	② CENTER	③ DUAL	④ SINGLE			
4	N.A	N.A	YES	N.A	N.A	N.A	2 - 3
	N.A	YES	YES	N.A	N.A	N.A	
	N.A	YES	N.A	YES	N.A	N.A	
6	N.A	N.A	YES	N.A	N.A	N.A	4 - 5
	N.A	N.A	YES	N.A	N.A	YES	
	N.A	YES	YES	N.A	N.A	N.A	
	N.A	YES	YES	N.A	N.A	YES	
	N.A	YES	N.A	YES	N.A	N.A	
	N.A	YES	N.A	YES	N.A	YES	
8 TO 12	N.A	N.A	YES	N.A	YES	N.A	6 - 8
	N.A	N.A	YES	N.A	YES	YES	
	N.A	YES	YES	N.A	N.A	N.A	
	N.A	YES	YES	N.A	N.A	YES	
	N.A	YES	N.A	YES	N.A	N.A	
	N.A	YES	N.A	YES	N.A	YES	
14 TO 50	YES	N.A	YES	N.A	YES	N.A	9 - 13
	YES	N.A	YES	N.A	YES	YES	

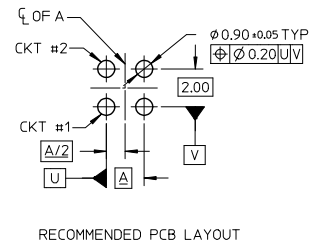
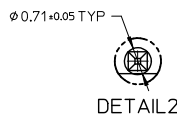
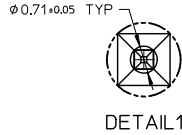
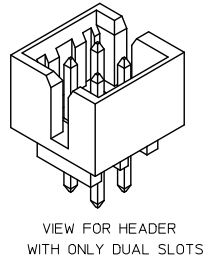
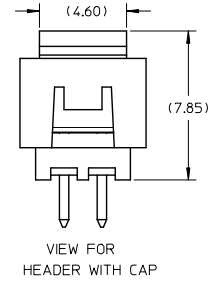
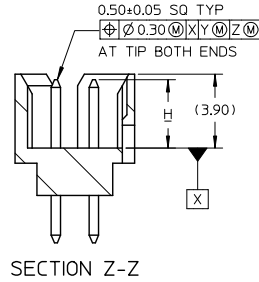
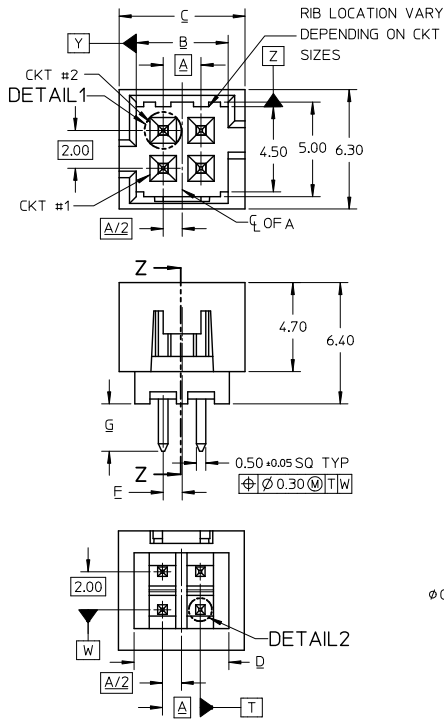
PACKAGING SPECIFICATION TABLE

TAPE AND REEL PACKAGING	PK-87831-300
TUBE STANDARD PACKAGING	PK-87831-001
TUBE NON-STANDARD PACKAGING FOR:	PK-87831-002
87831-0419 87831-0645	
87831-5141 87831-0632	
87831-0443 87831-5119	
87831-5241 87831-1011	
87831-5242 87831-1420	
87831-0643	

ADD PK TABLE EC NO: S2017-0022 DRAWN BY: CHYK-SICHONG CHECKED BY: KHLIM APPR: KHLIM 2016/07/04 2016/07/27 2016/07/28	QUALITY SYMBOLS $\nabla=0$ $\nabla=0$ $\nabla=0$	GENERAL TOLERANCES (UNLESS SPECIFIED)		DIMENSION STYLE MM ONLY		SCALE NTS	DESIGN UNITS METRIC	THIRD ANGLE PROJECTION	
		4 PLACES	± ---	± ---	DRAWN BY	DATE	MILLIGRID 2MM PITCH, THROUGH HOLE VERTICAL SHROUDED HEADER molex DOCUMENT NO. SD-87831-0001 SHEET NO. 1 OF 13		
		3 PLACES	± ---	± ---	GMENARLY	2015/04/15			
		2 PLACES	± 0.20	± ---	CHECKED BY	DATE			
		1 PLACE	± ---	± ---	CGOH	2015/06/29			
0 PLACE	± ---	± ---	APPROVED BY	DATE					
			KHLIM	2015/06/29					
		ANGULAR ± 3°	MATERIAL NO.						
		DRAFT WHERE APPLICABLE MUST REMAIN WITHIN DIMENSIONS	SEE TABLE						
			SIZE A3		THIS DRAWING CONTAINS INFORMATION THAT IS PROPRIETARY TO MOLEX INCORPORATED AND SHOULD NOT BE USED WITHOUT WRITTEN PERMISSION				

10 9 8 7 6 5 4 3 2 1

4 CIRCUITS



- NOTES:
- MATERIALS:
HOUSING: 30% GF, NYLON, UL94V-0, COLOR: BLACK
PIN: 0.50MM SQ PHOSPHOR BRONZE
 - FINISHES: REFER TO PLATING OPTIONS
 - PRODUCT SPECIFICATION: PS-87831-027
 - PACKAGING SPECIFICATION: SEE PACKAGING SPECS TABLE ON SHEET 1
 - MATES WITH: A. MOLEX CRIMP RECEPTACLE HOUSING: 5110 SERIES AND CRIMP TERMINAL: 50394 SERIES
B. MOLEX 2MM MILLIGRID DUAL ROW IDT: 87568 SERIES
C. MOLEX 2MM MILLIGRID DUAL ROW RECEPTACLE: 79107 (GOLD PLATED), 78787 (TIN PLATED)

EDIT NOTE 4 EC NO: S2017-0022 DRAWN: MENARLY 2016/07/04 CHKD: SCHEONG 2016/07/27 APPR: KHLIM 2016/07/28 REV A5	QUALITY SYMBOLS	GENERAL TOLERANCES (UNLESS SPECIFIED)	DIMENSION STYLE	SCALE	DESIGN UNITS	THIRD ANGLE PROJECTION																		
	$\nabla=0$ $\nabla=0$ $\nabla=0$	<table border="1"> <thead> <tr> <th></th> <th>mm</th> <th>INCH</th> </tr> </thead> <tbody> <tr> <td>4 PLACES</td> <td>±---</td> <td>±---</td> </tr> <tr> <td>3 PLACES</td> <td>±---</td> <td>±---</td> </tr> <tr> <td>2 PLACES</td> <td>±0.20</td> <td>±---</td> </tr> <tr> <td>1 PLACE</td> <td>±---</td> <td>±---</td> </tr> <tr> <td>0 PLACE</td> <td>±---</td> <td>±---</td> </tr> </tbody> </table>		mm	INCH	4 PLACES	±---	±---	3 PLACES	±---	±---	2 PLACES	±0.20	±---	1 PLACE	±---	±---	0 PLACE	±---	±---	MM ONLY	NTS	METRIC	<input checked="" type="checkbox"/> THIRD ANGLE PROJECTION
		mm	INCH																					
	4 PLACES	±---	±---																					
3 PLACES	±---	±---																						
2 PLACES	±0.20	±---																						
1 PLACE	±---	±---																						
0 PLACE	±---	±---																						
DRAFT WHERE APPLICABLE MUST REMAIN WITHIN DIMENSIONS	ANGULAR ± 3°	DRAWN BY: GMENARLY CHECKED BY: CGOH APPROVED BY: KHLIM DATE: 2015/04/15 DATE: 2015/06/29 DATE: 2015/06/29	TITLE	MILLIGRID 2MM PITCH, THROUGH HOLE VERTICAL SHROUDED HEADER																				
		SEE TABLE	MATERIAL NO.	DOCUMENT NO.	SHEET NO. 2 OF 13																			

10 9 8 7 6 5 4 3 2 1



10 9 8 7 6 5 4 3 2 1

4 CIRCUITS

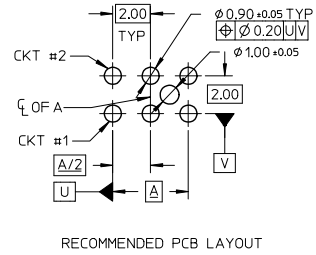
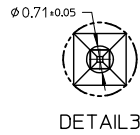
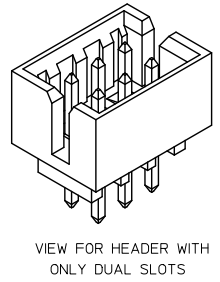
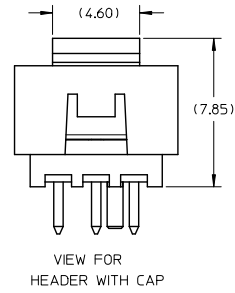
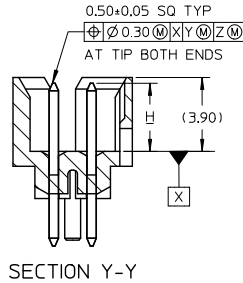
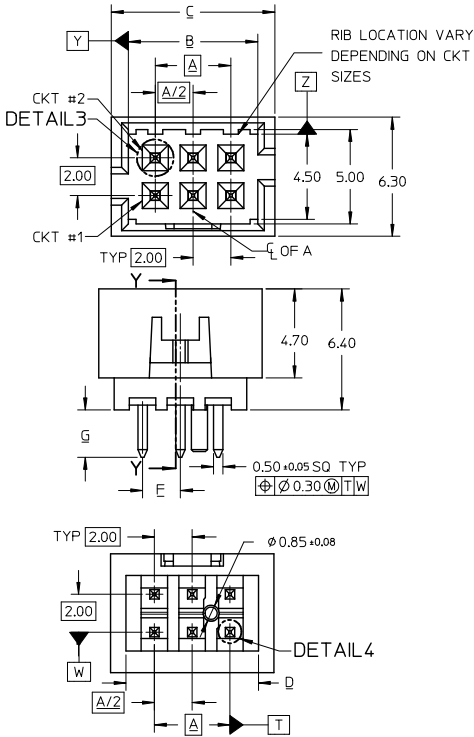
CKT SIZE	ASSY P/N WITHOUT CAP IN TUBE	ASSY P/N WITH CAP IN TUBE	ASSY P/N WITH CAP IN T&R	PLATING OPTIONS	FRICTION LOCKS		SIDE SLOTS		CENTER POLARIZATION	PEG	DIMENSION							
					DUAL	CENTER	DUAL	SINGLE			A	B	C	D	E	F	G	H
4	87831-0419	N.A	N.A	1	N.A	N.A	YES	N.A	N.A	N.A	2.00	4.85	6.65	5.00	N.A	1.00	2.50	3.60±0.20
	87831-0420	N.A	N.A	2														
	87831-0421	N.A	N.A	3														
	87831-0436	N.A	N.A	4														
	87831-0441	87831-0456	N.A	2														
	87831-0442	N.A	N.A	3														
	87831-5141	N.A	N.A	2														
	87831-5142	N.A	N.A	3														
	87831-6141	N.A	N.A	2														
	87831-6142	N.A	N.A	3														
87831-6143	N.A	N.A	2	N.A	YES	N.A	YES	N.A	N.A	2.50	3.60 ^{+0.15} _{-0.30}							
87831-0444	N.A	N.A	3															

PLATING OPTIONS:

- 1 - 0.05-0.13um/2-5uin GOLD IN CONTACT AREA AND 1.88um/75uin MIN. MATTE TIN IN SOLDER TAIL AREA OVER 1.27um/50uin MIN. NICKEL OVERALL.
- 2 - 0.38um/15uin GOLD IN CONTACT AREA AND 1.88um/75uin MIN. MATTE TIN IN SOLDER TAIL AREA OVER 1.27um/50uin MIN. NICKEL OVERALL.
- 3 - 0.76um/30uin GOLD IN CONTACT AREA AND 1.88um/75uin MIN. MATTETIN IN SOLDER TAIL AREA OVER 1.27um/50uin MIN. NICKEL OVERALL.
- 4 - 2.50um/100uin MIN. MATTE TIN OVER 1.25um/50uin MIN. NICKEL OVERALL.

<p>SEE SHEET 1,2,4,6,8-10</p> <p>EC NO: S2017-0022</p> <p>DRAWN BY: 2016/07/04</p> <p>CHKD: SCHEONG 2016/07/27</p> <p>APPR: KHLIM 2016/07/28</p> <p>REV: A5</p>	<p>QUALITY SYMBOLS</p> <p>√=0</p> <p>√=0</p> <p>√=0</p>	<p>GENERAL TOLERANCES (UNLESS SPECIFIED)</p> <table border="1"> <tr> <th></th> <th>mm</th> <th>INCH</th> </tr> <tr> <td>4 PLACES</td> <td>± ---</td> <td>± ---</td> </tr> <tr> <td>3 PLACES</td> <td>± ---</td> <td>± ---</td> </tr> <tr> <td>2 PLACES</td> <td>± 0.20</td> <td>± ---</td> </tr> <tr> <td>1 PLACE</td> <td>± ---</td> <td>± ---</td> </tr> <tr> <td>0 PLACE</td> <td>± ---</td> <td>± ---</td> </tr> </table> <p>ANGULAR ± 3°</p> <p>DRAFT WHERE APPLICABLE MUST REMAIN WITHIN DIMENSIONS</p>		mm	INCH	4 PLACES	± ---	± ---	3 PLACES	± ---	± ---	2 PLACES	± 0.20	± ---	1 PLACE	± ---	± ---	0 PLACE	± ---	± ---	<p>DIMENSION STYLE</p> <p>MM ONLY</p> <p>DRAWN BY: GMENARLY</p> <p>DATE: 2015/04/15</p> <p>CHECKED BY: CGOH</p> <p>DATE: 2015/06/29</p> <p>APPROVED BY: KHLIM</p> <p>DATE: 2015/06/29</p> <p>MATERIAL NO. SEE TABLE</p> <p>SIZE: A3</p>	<p>SCALE: NTS</p> <p>DESIGN UNITS: METRIC</p> <p>THIRD ANGLE PROJECTION</p> <p>TITLE: MILLIGRID 2MM PITCH, THROUGH HOLE VERTICAL SHROUDED HEADER</p> <p>molex</p> <p>DOCUMENT NO. SD-87831-0001</p> <p>SHEET NO. 3 OF 13</p>
		mm	INCH																			
	4 PLACES	± ---	± ---																			
	3 PLACES	± ---	± ---																			
2 PLACES	± 0.20	± ---																				
1 PLACE	± ---	± ---																				
0 PLACE	± ---	± ---																				
<p>THIS DRAWING CONTAINS INFORMATION THAT IS PROPRIETARY TO MOLEX INCORPORATED AND SHOULD NOT BE USED WITHOUT WRITTEN PERMISSION</p>																						
<p>1b_frame_A3_P_AM_T</p> <p>Rev. G 2012/01/11</p>																						
<p>9 8 7 6 5 4 3 2 1</p>																						

6 CIRCUITS



- NOTES:
- MATERIALS:
HOUSING: 30% GF, NYLON, UL94V-0, COLOR: BLACK
PIN: 0.50MM SQ PHOSPHOR BRONZE
 - FINISHES: REFER TO PLATING OPTIONS
 - PRODUCT SPECIFICATION: PS-87831-027
 - PACKAGING SPECIFICATION: SEE PACKAGING SPECS TABLE ON SHEET 1
 - MATES WITH: A. MOLEX CRIMP RECEPTACLE HOUSING: 5110 SERIES AND CRIMP TERMINAL: 50394 SERIES
B. MOLEX 2MM MILLIGRID DUAL ROW IDT: 87568 SERIES
C. MOLEX 2MM MILLIGRID DUAL ROW RECEPTACLE: 79107 (GOLD PLATED), 78787 (TIN PLATED)

EDIT NOTE 4 EC NO: S2017-0022 DRAWN BY: GMENARLY 2016/07/06 CHECKED BY: CHYK-SCHONG 2016/07/27 APPR: KHL IM 2016/07/28 REV A5	QUALITY SYMBOLS	GENERAL TOLERANCES (UNLESS SPECIFIED)	DIMENSION STYLE	SCALE	DESIGN UNITS	THIRD ANGLE PROJECTION																																					
	$\sqrt{\text{---}}=0$ $\sqrt{\text{---}}=0$ $\sqrt{\text{---}}=0$	<table border="1"> <thead> <tr> <th></th> <th>mm</th> <th>INCH</th> </tr> </thead> <tbody> <tr> <td>4 PLACES</td> <td>±---</td> <td>±---</td> </tr> <tr> <td>3 PLACES</td> <td>±---</td> <td>±---</td> </tr> <tr> <td>2 PLACES</td> <td>±0.20</td> <td>±---</td> </tr> <tr> <td>1 PLACE</td> <td>±---</td> <td>±---</td> </tr> <tr> <td>0 PLACE</td> <td>±---</td> <td>±---</td> </tr> </tbody> </table>		mm	INCH	4 PLACES	±---	±---	3 PLACES	±---	±---	2 PLACES	±0.20	±---	1 PLACE	±---	±---	0 PLACE	±---	±---	<table border="1"> <thead> <tr> <th>DRAWN BY</th> <th>DATE</th> <th>TITLE</th> </tr> </thead> <tbody> <tr> <td>GMENARLY</td> <td>2015/04/15</td> <td>MILLIGRID 2MM PITCH, THROUGH HOLE VERTICAL SHROUDED HEADER</td> </tr> <tr> <td>CHECKED BY</td> <td>DATE</td> <td></td> </tr> <tr> <td>CGOH</td> <td>2015/06/29</td> <td></td> </tr> <tr> <td>APPROVED BY</td> <td>DATE</td> <td></td> </tr> <tr> <td>KHL IM</td> <td>2015/06/29</td> <td></td> </tr> </tbody> </table>	DRAWN BY	DATE	TITLE	GMENARLY	2015/04/15	MILLIGRID 2MM PITCH, THROUGH HOLE VERTICAL SHROUDED HEADER	CHECKED BY	DATE		CGOH	2015/06/29		APPROVED BY	DATE		KHL IM	2015/06/29		MM ONLY	NTS	METRIC	
		mm	INCH																																								
	4 PLACES	±---	±---																																								
3 PLACES	±---	±---																																									
2 PLACES	±0.20	±---																																									
1 PLACE	±---	±---																																									
0 PLACE	±---	±---																																									
DRAWN BY	DATE	TITLE																																									
GMENARLY	2015/04/15	MILLIGRID 2MM PITCH, THROUGH HOLE VERTICAL SHROUDED HEADER																																									
CHECKED BY	DATE																																										
CGOH	2015/06/29																																										
APPROVED BY	DATE																																										
KHL IM	2015/06/29																																										
DESCRIPTION	ANGULAR ± 3°	DRAFT WHERE APPLICABLE MUST REMAIN WITHIN DIMENSIONS	MATERIAL NO.	DOCUMENT NO.	SHEET NO.																																						
SIZE A3	SEE TABLE	THIS DRAWING CONTAINS INFORMATION THAT IS PROPRIETARY TO MOLEX INCORPORATED AND SHOULD NOT BE USED WITHOUT WRITTEN PERMISSION		SD-87831-0001	4 OF 13																																						



10 9 8 7 6 5 4 3 2 1

6 CIRCUITS

CKT SIZE	ASSY P/N WITHOUT CAP IN TUBE	ASSY P/N WITH CAP IN TUBE	ASSY P/N WITH CAP IN T&R	PLATING OPTIONS	FRICTION LOCKS		SIDE SLOTS		CENTER POLARIZATION	PEG	DIMENSION							
					DUAL	CENTER	DUAL	SINGLE			A	B	C	D	E	F	G	H
6	87831-0619	N.A	N.A	1	N.A	N.A	YES	N.A	N.A	N.A	4.00	6.85	8.65	7.00	N.A	N.A	2.50	3.60±0.20
	87831-0620	N.A	N.A	2														
	87831-0621	N.A	N.A	3														
	87831-0636	N.A	N.A	4	N.A	N.A	YES	N.A	N.A	YES						N.A	2.50	
	87831-0628	N.A	N.A	2														
	87831-0629	N.A	N.A	3	N.A	YES	YES	N.A	N.A	N.A						2.00	2.50	
	87831-0641	N.A	N.A	2														
	87831-0642	N.A	87831-5552	3														
	87831-5241	N.A	N.A	2														
	87831-5242	N.A	N.A	3														
87831-6241	N.A	N.A	2															
87831-6242	N.A	N.A	3															
87831-0643	N.A	N.A	2															
87831-0644	N.A	N.A	3	N.A	YES	N.A	YES	N.A	YES	2.50								
87831-0645	N.A	N.A	2															
87831-0646	N.A	N.A	3															
D	87831-0632	N.A	N.A	2	N.A	YES	YES	N.A	N.A	YES	2.50							
	87831-5119	N.A	N.A	1														

PLATING OPTIONS:

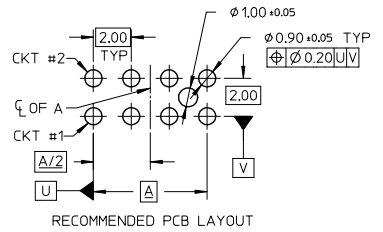
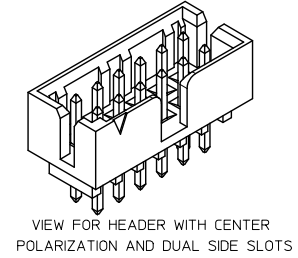
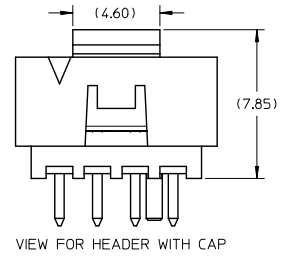
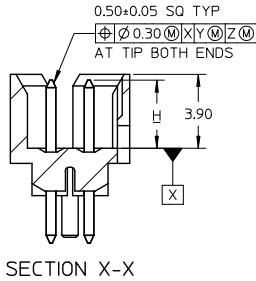
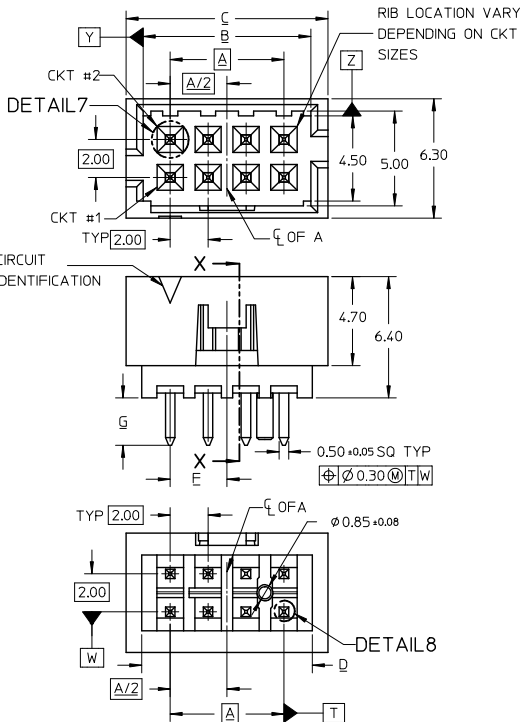
- 1 - 0.05-0.13um/2-5uin GOLD IN CONTACT AREA AND 1.88um/75uin MIN. MATTE TIN IN SOLDER TAIL AREA OVER 1.27um/50uin MIN. NICKEL OVERALL.
- 2 - 0.38um/15uin GOLD IN CONTACT AREA AND 1.88um/75uin MIN. MATTE TIN IN SOLDER TAIL AREA OVER 1.27um/50uin MIN. NICKEL OVERALL.
- 3 - 0.76um/30uin GOLD IN CONTACT AREA AND 1.88um/75uin MIN. MATTE TIN IN SOLDER TAIL AREA OVER 1.27um/50uin MIN. NICKEL OVERALL.
- 4 - 2.50um/100uin MIN. MATTE TIN OVER 1.25um/50uin MIN. NICKEL OVERALL.

SEE SHEET 1.2,4,6,8-10 EC NO: S2017-0022 DRAWN BY: 2016/07/04 CHKD: SCHEONG 2016/07/27 APPR: KHLIM 2016/07/28	QUALITY SYMBOLS	GENERAL TOLERANCES (UNLESS SPECIFIED)	DIMENSION STYLE	SCALE	DESIGN UNITS	THIRD ANGLE PROJECTION
	$\nabla=0$ $\nabla=0$ $\nabla=0$	mm INCH 4 PLACES ± --- ± --- 3 PLACES ± --- ± --- 2 PLACES ± 0.20 ± --- 1 PLACE ± --- ± --- 0 PLACE ± --- ± --- ANGULAR ± 3°	MM ONLY	NTS	METRIC	MILLIGRID 2MM PITCH, THROUGH HOLE VERTICAL SHROUDED HEADER
	DRAWN BY: GMENARLY DATE: 2015/04/15 CHECKED BY: CGOH DATE: 2015/06/29 APPROVED BY: KHLIM DATE: 2015/06/29	MATERIAL NO. SEE TABLE		DOCUMENT NO. SD-87831-0001	SHEET NO. 5 OF 13	
	DRAFT WHERE APPLICABLE MUST REMAIN WITHIN DIMENSIONS THIS DRAWING CONTAINS INFORMATION THAT IS PROPRIETARY TO MOLEX INCORPORATED AND SHOULD NOT BE USED WITHOUT WRITTEN PERMISSION					

1b_frame_A3_P_AM_T Rev. G 2012/01/11 9 8 7 6 5 4 3 2 1

10 9 8 7 6 5 4 3 2 1

8 TO 12 CIRCUITS



- NOTES:
- MATERIALS:
HOUSING: 30% GF, NYLON, UL94V-0, COLOR: BLACK
PIN: 0.50MM SQ PHOSPHOR BRONZE
 - FINISHES: REFER TO PLATING OPTIONS
 - PRODUCT SPECIFICATION: PS-87831-027
 - PACKAGING SPECIFICATION: SEE PACKAGING SPECS TABLE ON SHEET 1
 - MATES WITH: A. MOLEX CRIMP RECEPTACLE HOUSING: 51110 SERIES AND CRIMP TERMINAL: 50394 SERIES
B. MOLEX 2MM MILLIGRID DUAL ROW IDT: 87568 SERIES
C. MOLEX 2MM MILLIGRID DUAL ROW RECEPTACLE: 79107 (GOLD PLATED), 78787 (TIN PLATED)

EDIT NOTE 4 EC NO: S2017-0022 DRAWN: MENARLY 2016/07/04 CHKD: SCHEONG 2016/07/27 APPR: KHLIM 2016/07/28 REV A5	QUALITY SYMBOLS	GENERAL TOLERANCES (UNLESS SPECIFIED)	DIMENSION STYLE	SCALE	DESIGN UNITS	THIRD ANGLE PROJECTION
	$\nabla=0$ $\nabla=0$ $\nabla=0$	mm INCH 4 PLACES ± --- ± --- 3 PLACES ± --- ± --- 2 PLACES ± 0.20 ± --- 1 PLACE ± --- ± --- 0 PLACE ± --- ± --- ANGULAR ± 3°	MM ONLY	NTS	METRIC	M □
	DRAFT WHERE APPLICABLE MUST REMAIN WITHIN DIMENSIONS	DRAWN BY: GMENARLY 2015/04/15 CHECKED BY: CGOH 2015/06/29 APPROVED BY: KHLIM 2015/06/29	TITLE			MILLIGRID 2MM PITCH, THROUGH HOLE VERTICAL SHROUDED HEADER
		MATERIAL NO. SEE TABLE SIZE A3	DOCUMENT NO.			SD-87831-0001 SHEET NO. 6 OF 13

9 8 7 6 5 4 3 2 1



10 9 8 7 6 5 4 3 2 1

8 CIRCUITS

CKT SIZE	ASSY P/N WITHOUT CAP IN TUBE	ASSY P/N WITH CAP IN TUBE	ASSY P/N WITH CAP IN T&R	PLATING OPTIONS	FRICITION LOCKS				SIDE SLOTS		CENTER POLARIZATION	PEG	DIMENSION																
					DUAL	CENTER	DUAL	SINGLE	A	B			C	D	E	F	G	H											
8	87831-0819	N.A	N.A	1									6.00	8.85	10.65	9.00	N.A	3.00	2.50	3.60±0.20									
	87831-0820	N.A	N.A	2																									
	87831-0821	N.A	N.A	3		N.A	N.A	YES	N.A	YES	N.A																		
	87831-0836	N.A	N.A	4																									
	87831-0828	N.A	N.A	2																									
	87831-0829	N.A	N.A	3		N.A	N.A	YES	N.A	YES	YES																		
	87831-0841	N.A	87831-5551	2																									
	87831-0842	N.A	N.A	3		N.A	YES	YES	N.A	N.A	N.A																		
	87831-5441	N.A	N.A	2		N.A	YES	YES	N.A	N.A	N.A																		
	87831-5442	N.A	N.A	3																									
	87831-5541	N.A	N.A	2		N.A	YES	YES	N.A	N.A	N.A																		
	87831-5542	N.A	N.A	3																									
	87831-5741	N.A	N.A	2		N.A	YES	YES	N.A	N.A	N.A																		
	87831-5742	N.A	N.A	3																									
	87831-0832	N.A	N.A	2		N.A	YES	YES	N.A	N.A	YES																		
	87831-0843	N.A	N.A	2																									
87831-0844	N.A	N.A	3		N.A	YES	N.A	YES	N.A	N.A										3.60±0.15									
87831-0845	N.A	N.A	2																										
87831-0846	N.A	N.A	3		N.A	YES	N.A	YES	N.A	YES																			

PLATING OPTIONS:

- 1 - 0.05-0.13um/2-5uin GOLD IN CONTACT AREA AND 1.88um/75uin MIN. MATTE TIN IN SOLDER TAIL AREA OVER 1.27um/50uin MIN. NICKEL OVERALL.
- 2 - 0.38um/15uin GOLD IN CONTACT AREA AND 1.88um/75uin MIN. MATTE TIN IN SOLDER TAIL AREA OVER 1.27um/50uin MIN. NICKEL OVERALL.
- 3 - 0.76um/30uin GOLD IN CONTACT AREA AND 1.88um/75uin MIN. MATTE TIN IN SOLDER TAIL AREA OVER 1.27um/50uin MIN. NICKEL OVERALL.
- 4 - 2.50um/100uin MIN. MATTE TIN OVER 1.25um/50uin MIN. NICKEL OVERALL.

<p>SEE SHEET 12.4.6.8-10</p> <p>EC NO: S2017-0022</p> <p>DRAWN BY: GMENARLY 2016/07/04</p> <p>CHKD: SCHEONG 2016/07/27</p> <p>APPR: KHLIM 2016/07/28</p> <p>REV: A5</p>	<p>QUALITY SYMBOLS</p> <p>▽=0</p> <p>▽=0</p> <p>▽=0</p>	<p>GENERAL TOLERANCES (UNLESS SPECIFIED)</p>		<p>DIMENSION STYLE</p> <p>MM ONLY</p>		<p>SCALE</p> <p>NTS</p>	<p>DESIGN UNITS</p> <p>METRIC</p>	<p>THIRD ANGLE PROJECTION</p>	
		<p>4 PLACES ± --- ± ---</p>	<p>3 PLACES ± --- ± ---</p>	<p>DRAWN BY: GMENARLY</p> <p>DATE: 2015/04/15</p>	<p>TITLE</p> <p>MILLIGRID</p> <p>2MM PITCH, THROUGH HOLE</p> <p>VERTICAL SHROUDED HEADER</p>				
		<p>2 PLACES ± 0.20 ± ---</p>	<p>1 PLACE ± --- ± ---</p>	<p>CHECKED BY: CGOH</p> <p>DATE: 2015/06/29</p>	<p>DOCUMENT NO.</p> <p>SD-87831-0001</p>				
		<p>0 PLACE ± --- ± ---</p>	<p>ANGULAR ± 3°</p> <p>DRAFT WHERE APPLICABLE MUST REMAIN WITHIN DIMENSIONS</p>	<p>APPROVED BY: KHLIM</p> <p>DATE: 2015/06/29</p>	<p>SHEET NO.</p> <p>7 OF 13</p>				

ib_frame_A3_P_AM_T Rev. G 2012/01/11 9 8 7 6 5 4 3 2 1

THIS DRAWING CONTAINS INFORMATION THAT IS PROPRIETARY TO MOLEX INCORPORATED AND SHOULD NOT BE USED WITHOUT WRITTEN PERMISSION



10 9 8 7 6 5 4 3 2 1

10 TO 12 CIRCUITS

CKT SIZE	ASSY P/N WITHOUT CAP IN TUBE	ASSY P/N WITH CAP IN TUBE	ASSY P/N WITH CAP IN T&R	PLATING OPTIONS	FRICITION LOCKS				SIDE SLOTS		CENTER POLARIZATION	PEG	DIMENSION							
					DUAL	CENTER	DUAL	SINGLE	A	B			C	D	E	F	G	H		
10	87831-1019	N.A	N.A	1									8.00	10.85	12.65	11.00	N.A	N.A	2.50	3.60±0.20
	87831-1020	N.A	N.A	2																
	87831-1021	N.A	N.A	3	N.A	N.A	YES	N.A	YES	N.A										
	87831-1036	N.A	N.A	4																
	87831-1010	N.A	N.A	2																
	87831-1011	N.A	N.A	3	N.A	N.A	YES	N.A	YES	N.A										
	87831-1028	N.A	N.A	2																
	87831-1029	N.A	87831-5557	3	N.A	N.A	YES	N.A	YES	YES										
	87831-1035	N.A	N.A	3	N.A	N.A	YES	N.A	YES	YES										
	87831-1041	N.A	N.A	2																
	87831-1042	N.A	87831-5553	3	N.A	YES	YES	N.A	N.A	N.A										
	87831-1032	N.A	N.A	2	N.A	YES	YES	N.A	N.A	YES										
87831-1043	N.A	N.A	2																	
87831-1044	N.A	N.A	3	N.A	YES	N.A	YES	N.A	N.A											
87831-1045	N.A	N.A	2																	
87831-1046	N.A	N.A	3	N.A	YES	N.A	YES	N.A	YES											
12	87831-1219	N.A	N.A	1								10.00	12.85	14.65	13.00	N.A	N.A	2.50	3.60±0.20	
	87831-1220	N.A	87831-5556	2																
	87831-1221	N.A	N.A	3	N.A	N.A	YES	N.A	YES	N.A										
	87831-1236	N.A	N.A	4																
	87831-1228	N.A	N.A	2																
	87831-1229	N.A	87831-5558	3	N.A	N.A	YES	N.A	YES	YES										
	87831-1241	N.A	N.A	2																
	87831-1242	N.A	N.A	3	N.A	YES	YES	N.A	N.A	N.A										
	87831-1255	87831-1256	N.A	2	N.A	YES	YES	N.A	N.A	N.A										
	87831-1232	N.A	N.A	2	N.A	YES	YES	N.A	N.A	YES										
	87831-1243	N.A	N.A	2																
	87831-1244	N.A	N.A	3	N.A	YES	N.A	YES	N.A	N.A										
87831-1245	N.A	N.A	2																	
87831-1246	N.A	N.A	3	N.A	YES	N.A	YES	N.A	YES											

PLATING OPTIONS:

- 1 - 0.05-0.13um/2-5uin GOLD IN CONTACT AREA AND 1.88um/75uin MIN. MATTE TIN IN SOLDER TAIL AREA OVER 1.27um/50uin MIN. NICKEL OVERALL.
- 2 - 0.38um/15uin GOLD IN CONTACT AREA AND 1.88um/75uin MIN. MATTE TIN IN SOLDER TAIL AREA OVER 1.27um/50uin MIN. NICKEL OVERALL.
- 3 - 0.76um/30uin GOLD IN CONTACT AREA AND 1.88um/75uin MIN. MATTE TIN IN SOLDER TAIL AREA OVER 1.27um/50uin MIN. NICKEL OVERALL.
- 4 - 2.50um/100uin MIN. MATTE TIN OVER 1.25um/50uin MIN. NICKEL OVERALL.

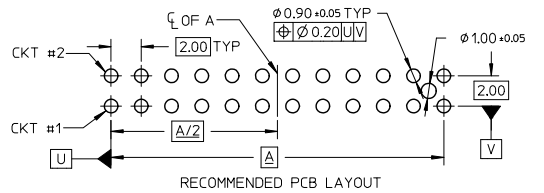
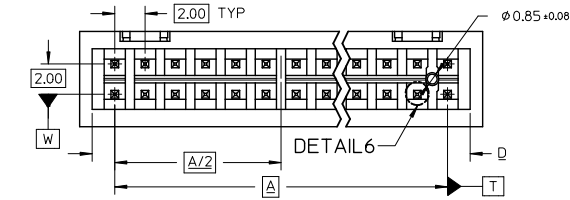
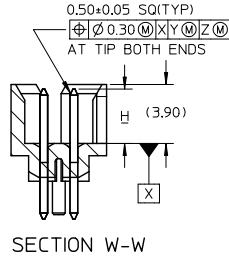
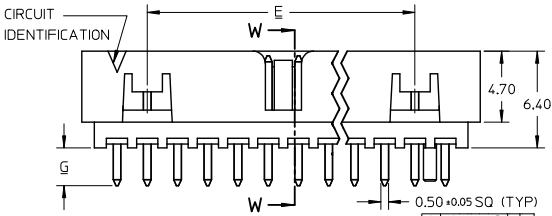
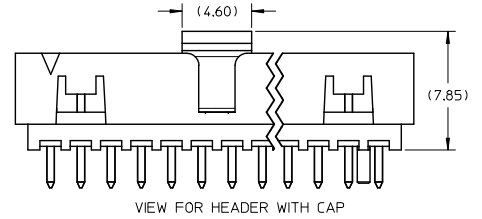
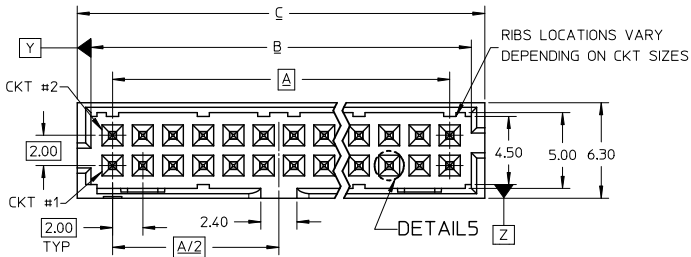
ADD: 87831-5557-5558 EC NO: S2017-0022 DRAWN BY: CHYK-SCHONG CHECKED BY: KHLIM APPR: KHLIM REV: A5	QUALITY SYMBOLS ∇=0 ∇=0 ∇=0	GENERAL TOLERANCES (UNLESS SPECIFIED)		DIMENSION STYLE		SCALE	DESIGN UNITS	THIRD ANGLE PROJECTION
				MM ONLY		NTS	METRIC	
				DRAWN BY: GMENARLY DATE: 2015/04/15		TITLE: MILLIGRID 2MM PITCH, THROUGH HOLE VERTICAL SHROUDED HEADER		
				CHECKED BY: CGOH DATE: 2015/06/29		APPROVED BY: KHLIM DATE: 2015/06/29		
		ANGULAR ± 3°		MATERIAL NO.		DOCUMENT NO.		SHEET NO.
		DRAFT WHERE APPLICABLE MUST REMAIN WITHIN DIMENSIONS		SEE TABLE		SD-87831-0001		8 OF 13
		THIS DRAWING CONTAINS INFORMATION THAT IS PROPRIETARY TO MOLEX INCORPORATED AND SHOULD NOT BE USED WITHOUT WRITTEN PERMISSION						

tb_frame_A3_P_AM_T
Rev. G 2012/01/11

9 8 7 6 5 4 3 2 1

10 9 8 7 6 5 4 3 2 1

14 TO 50 CIRCUITS



NOTES:

- MATERIALS:
HOUSING: 30% GF, NYLON, UL94V-0, COLOR: BLACK
PIN: 0.50MM SQ PHOSPHOR BRONZE
- FINISHES: REFER TO PLATING OPTIONS
- PRODUCT SPECIFICATION: PS-87831-027
- PACKAGING SPECIFICATION: SEE PACKAGING SPECS TABLE ON SHEET 1
- MATES WITH: A. MOLEX CRIMP RECEPTACLE HOUSING: 51110 SERIES AND CRIMP TERMINAL: 50394 SERIES
B. MOLEX 2MM MILLIGRID DUAL ROW IDT: 87568 SERIES
C. MOLEX 2MM MILLIGRID DUAL ROW RECEPTACLE: 79107 (GOLD PLATED), 78787 (TIN PLATED)

EDIT NOTE 4 EC NO: S2017-0022 DRAWN BY: G MENARLY CHKD: SCHEONG APPR: KHLIM 2016/07/27 2016/07/28	QUALITY SYMBOLS	GENERAL TOLERANCES (UNLESS SPECIFIED)		DIMENSION STYLE		SCALE	DESIGN UNITS	THIRD ANGLE PROJECTION	
	$\nabla=0$ $\nabla=0$ $\nabla=0$	4 PLACES	±---	±---	MM ONLY		NTS	METRIC	MILLIGRID 2MM PITCH, THROUGH HOLE VERTICAL SHROUDED HEADER molex DOCUMENT NO. SD-87831-0001 SHEET NO. 9 OF 13
		3 PLACES	±---	±---	DRAWN BY	DATE	TITLE		
		2 PLACES	±0.20	±---	CHECKED BY	DATE	TITLE		
1 PLACE	±---	±---	APPROVED BY	DATE	TITLE				
0 PLACE	±---	±---	ANGULAR ± 3°		MATERIAL NO.		DOCUMENT NO.		
DRAFT WHERE APPLICABLE MUST REMAIN WITHIN DIMENSIONS				SEE TABLE		THIS DRAWING CONTAINS INFORMATION THAT IS PROPRIETARY TO MOLEX INCORPORATED AND SHOULD NOT BE USED WITHOUT WRITTEN PERMISSION			

9 8 7 6 5 4 3 2 1



10 9 8 7 6 5 4 3 2 1

14 TO 20 CIRCUITS

CKT SIZE	ASSY P/N WITHOUT CAP IN TUBE	ASSY P/N WITH CAP IN TUBE	ASSY P/N WITH CAP IN T&R	PLATING OPTIONS	FRICTION LOCKS		SIDE SLOTS		CENTER POLARIZATION	PEG	DIMENSION							
					DUAL	CENTER	DUAL	SINGLE			A	B	C	D	E	F	G	H
14	87831-1419	N.A	N.A	1							12.00	14.85	16.65	15.00	8.00	N.A	2.50	3.60±0.20
	87831-1420	87831-1430	87831-5554	2	YES	N.A	YES	N.A	YES	N.A								
	87831-1421	N.A	N.A	3														
	87831-1436	N.A	N.A	4														
	87831-1428	N.A	N.A	2	YES	N.A	YES	N.A	YES	YES								
	87831-1429	N.A	N.A	3	YES	N.A	YES	N.A	YES	YES								
	87831-1435	N.A	N.A	3	YES	N.A	YES	N.A	YES	YES								
	87831-1410	N.A	N.A	2	YES	N.A	YES	N.A	YES	YES								
87831-1411	N.A	N.A	3							3.50								
16	87831-1619	N.A	N.A	1							14.00	16.85	18.65	17.00	10.00	N.A	2.50	3.60±0.20
	87831-1620	N.A	N.A	2	YES	N.A	YES	N.A	YES	N.A								
	87831-1621	N.A	N.A	3														
	87831-1636	N.A	N.A	4														
	87831-1628	N.A	N.A	2	YES	N.A	YES	N.A	YES	YES								
	87831-1629	N.A	87831-5559	3	YES	N.A	YES	N.A	YES	YES								
87831-1635	N.A	N.A	3	YES	N.A	YES	N.A	YES	YES	3.50								
18	87831-1819	N.A	N.A	1							16.00	18.85	20.65	19.00	12.00	N.A	2.50	3.60±0.20
	87831-1820	N.A	N.A	2	YES	N.A	YES	N.A	YES	N.A								
	87831-1821	N.A	N.A	3														
	87831-1836	N.A	N.A	4														
	87831-1828	N.A	N.A	2	YES	N.A	YES	N.A	YES	YES								
	87831-1829	N.A	N.A	3	YES	N.A	YES	N.A	YES	YES								
20	87831-2019	N.A	N.A	1							18.00	20.85	22.65	21.00	14.00	N.A	2.50	3.60±0.20
	87831-2020	N.A	N.A	2	YES	N.A	YES	N.A	YES	N.A								
	87831-2021	N.A	N.A	3														
	87831-2036	N.A	N.A	4														
	87831-2028	N.A	N.A	2	YES	N.A	YES	N.A	YES	YES								
	87831-2029	N.A	N.A	3	YES	N.A	YES	N.A	YES	YES								
	87831-2035	N.A	N.A	3	YES	N.A	YES	N.A	YES	YES								
	87831-2010	N.A	N.A	2	YES	N.A	YES	N.A	YES	N.A								
87831-2011	N.A	N.A	3							3.50								

PLATING OPTIONS:

- 1 - 0.05-0.13um/2-5uin GOLD IN CONTACT AREA AND 1.88um/75uin MIN. MATTE TIN IN SOLDER TAIL AREA OVER 1.27um/50uin MIN. NICKEL OVERALL.
- 2 - 0.38um/15uin GOLD IN CONTACT AREA AND 1.88um/75uin MIN. MATTE TIN IN SOLDER TAIL AREA OVER 1.27um/50uin MIN. NICKEL OVERALL.
- 3 - 0.76um/30uin GOLD IN CONTACT AREA AND 1.88um/75uin MIN. MATTE TIN IN SOLDER TAIL AREA OVER 1.27um/50uin MIN. NICKEL OVERALL.
- 4 - 2.50um/100uin MIN. MATTE TIN OVER 1.25um/50uin MIN. NICKEL OVERALL.

ADD 87831-5559 EC NO. S2017-0022 DRAWN: MENARLY 2016/07/04 CHKD: SCHEONG 2016/07/27 APPR: KHLIM 2016/07/28 REV A5	QUALITY SYMBOLS ∇=0 ∇=0 ∇=0	GENERAL TOLERANCES (UNLESS SPECIFIED) 4 PLACES ± --- ± --- 3 PLACES ± --- ± --- 2 PLACES ± 0.20 ± --- 1 PLACE ± --- ± --- 0 PLACE ± --- ± --- ANGULAR ± 3° DRAFT WHERE APPLICABLE MUST REMAIN WITHIN DIMENSIONS	DIMENSION STYLE MM ONLY DRAWN BY DATE GMENARLY 2015/04/15 CHECKED BY DATE CGOH 2015/06/29 APPROVED BY DATE KHLIM 2015/06/29	SCALE NTS DESIGN UNITS METRIC THIRD ANGLE PROJECTION	TITLE MILLIGRID 2MM PITCH, THROUGH HOLE VERTICAL SHROUDED HEADER molex MATERIAL NO. SEE TABLE DOCUMENT NO. SD-87831-0001 SHEET NO. 10 OF 13
	THIS DRAWING CONTAINS INFORMATION THAT IS PROPRIETARY TO MOLEX INCORPORATED AND SHOULD NOT BE USED WITHOUT WRITTEN PERMISSION				
	SIZE A3				
	DRAWING REVISIONS				

9 8 7 6 5 4 3 2 1

10 9 8 7 6 5 4 3 2 1

22 TO 30 CIRCUITS

CKT SIZE	ASSY P/N WITHOUT CAP IN TUBE	ASSY P/N WITH CAP IN TUBE	ASSY P/N WITH CAP IN T&R	PLATING OPTIONS	FRICITION LOCKS				SIDE SLOTS		CENTER POLARIZATION	PEG	DIMENSION							
					DUAL	CENTER	DUAL	SINGLE	A	B			C	D	E	F	G	H		
22	87831-2219	N.A	N.A	1	YES	N.A	YES	N.A	YES	N.A	20.00	22.85	24.65	23.00	16.00	N.A	2.50	3.60±0.20		
	87831-2220	N.A	N.A	2																
	87831-2221	N.A	N.A	3																
	87831-2236	N.A	N.A	4																
	87831-2228	N.A	N.A	2																
24	87831-2229	N.A	N.A	3	YES	N.A	YES	N.A	YES	N.A	22.00	24.85	26.65	25.00	18.00	N.A	2.50	3.60±0.20		
	87831-2419	N.A	N.A	1																
	87831-2420	N.A	N.A	2																
	87831-2421	N.A	N.A	3																
	87831-2436	N.A	N.A	4																
26	87831-2428	N.A	N.A	2	YES	N.A	YES	N.A	YES	YES	24.00	26.85	28.65	27.00	20.00	N.A	2.50	3.60±0.20		
	87831-2429	N.A	N.A	3																
	87831-2435	N.A	N.A	3																
	87831-2410	N.A	N.A	2																
	87831-2619	N.A	N.A	1																
28	87831-2620	87831-2630	87831-5555	2	YES	N.A	YES	N.A	YES	N.A	26.00	28.85	30.65	29.00	22.00	N.A	2.50	3.60±0.20		
	87831-2621	N.A	N.A	3																
	87831-2636	N.A	N.A	4																
	87831-2628	N.A	N.A	2																
	87831-2629	N.A	N.A	3																
30	87831-2610	N.A	N.A	2	YES	N.A	YES	N.A	YES	N.A	28.00	30.85	32.65	31.00	24.00	N.A	2.50	3.60±0.20		
	87831-2819	N.A	N.A	1																
	87831-2820	N.A	N.A	2																
	87831-2821	N.A	N.A	3																
	87831-2836	N.A	N.A	4																
30	87831-2828	N.A	N.A	2	YES	N.A	YES	N.A	YES	YES	28.00	30.85	32.65	31.00	24.00	N.A	2.50	3.60±0.20		
	87831-2829	N.A	N.A	3																
	87831-3019	N.A	N.A	1																
	87831-3020	N.A	N.A	2																
	87831-3021	N.A	N.A	3																
30	87831-3036	N.A	N.A	4	YES	N.A	YES	N.A	YES	YES	28.00	30.85	32.65	31.00	24.00	N.A	2.50	3.60±0.20		
	87831-3028	N.A	N.A	2																
	87831-3029	N.A	N.A	3																
	87831-3035	N.A	N.A	3																
	87831-3010	87831-3030	87831-3050	2																

- PLATING OPTIONS:
- 0.05-0.13um/2-5uin GOLD IN CONTACT AREA AND 1.88um/75uin MIN. MATTE TIN IN SOLDER TAIL AREA OVER 1.27um/50uin MIN. NICKEL OVERALL.
 - 0.38um/15uin GOLD IN CONTACT AREA AND 1.88um/75uin MIN. MATTE TIN IN SOLDER TAIL AREA OVER 1.27um/50uin MIN. NICKEL OVERALL.
 - 0.76um/30uin GOLD IN CONTACT AREA AND 1.88um/75uin MIN. MATTE TIN IN SOLDER TAIL AREA OVER 1.27um/50uin MIN. NICKEL OVERALL.
 - 2.50um/100uin MIN. MATTE TIN OVER 1.25um/50uin MIN. NICKEL OVERALL.

SEE SHEET 1.2.4.6.8-10
 EC NO: S2017-0022
 DRAWN BY: CHYK-SCHONG
 CHECKED BY: KHLIM
 DATE: 2016/07/27
 DATE: 2016/07/28
 APPR: KHLIM

QUALITY SYMBOLS	DESCRIPTION
$\nabla=0$	4 PLACES ±---
$\nabla=0$	3 PLACES ±---
$\nabla=0$	2 PLACES ±0.20
$\nabla=0$	1 PLACE ±---
$\nabla=0$	0 PLACE ±---

GENERAL TOLERANCES (UNLESS SPECIFIED)		DIMENSION STYLE MM ONLY		SCALE NTS	DESIGN UNITS METRIC	THIRD ANGLE PROJECTION
mm	INCH	DRAWN BY GMENARLY	DATE 2015/04/15	TITLE MILLIGRID 2MM PITCH, THROUGH HOLE VERTICAL SHROUDED HEADER		
±---	±---	CHECKED BY CGOH	DATE 2015/06/29	molex		
±0.20	±---	APPROVED BY KHLIM	DATE 2015/06/29			
ANGULAR ± 3°		MATERIAL NO.	DOCUMENT NO.	SHEET NO.		
DRAFT WHERE APPLICABLE MUST REMAIN WITHIN DIMENSIONS		SEE TABLE	SD-87831-0001	11 OF 13		
THIS DRAWING CONTAINS INFORMATION THAT IS PROPRIETARY TO MOLEX INCORPORATED AND SHOULD NOT BE USED WITHOUT WRITTEN PERMISSION						

ib_frame_A3_P_AM_T Rev. G 2012/01/11 9 8 7 6 5 4 3 2 1



10 9 8 7 6 5 4 3 2 1

32 TO 40 CIRCUITS

F	CKT SIZE	ASSY P/N WITHOUT CAP IN TUBE	ASSY P/N WITH CAP IN TUBE	ASSY P/N WITH CAP IN T&R	PLATING OPTIONS	FRICTION LOCKS		SIDE SLOTS		CENTER POLARIZATION	PEG	DIMENSION							
						DUAL	CENTER	DUAL	SINGLE			A	B	C	D	E	F	G	H
32	87831-3219	N.A	N.A	1	YES	N.A	YES	N.A	YES	N.A	30.00	32.85	34.65	33.00	26.00	N.A	2.50	3.60±0.20	
	87831-3220	N.A	N.A	2															
	87831-3221	N.A	N.A	3															
	87831-3236	N.A	N.A	4															
	87831-3228	N.A	N.A	2															
34	87831-3419	N.A	N.A	1	YES	N.A	YES	N.A	YES	N.A	32.00	34.85	36.65	35.00	28.00	N.A	2.50	3.60±0.20	
	87831-3420	N.A	N.A	2															
	87831-3421	N.A	N.A	3															
	87831-3436	N.A	N.A	4															
	87831-3428	N.A	N.A	2															
36	87831-3619	N.A	N.A	1	YES	N.A	YES	N.A	YES	N.A	34.00	36.85	38.65	37.00	30.00	N.A	2.50	3.60±0.20	
	87831-3620	N.A	N.A	2															
	87831-3621	N.A	N.A	3															
	87831-3636	N.A	N.A	4															
	87831-3628	N.A	N.A	2															
38	87831-3819	N.A	N.A	1	YES	N.A	YES	N.A	YES	N.A	36.00	38.85	40.65	39.00	32.00	N.A	2.50	3.60±0.20	
	87831-3820	N.A	N.A	2															
	87831-3821	N.A	N.A	3															
	87831-3836	N.A	N.A	4															
	87831-3828	N.A	N.A	2															
40	87831-4019	N.A	N.A	1	YES	N.A	YES	N.A	YES	N.A	38.00	40.85	42.65	41.00	34.00	N.A	2.50	3.60±0.20	
	87831-4020	N.A	N.A	2															
	87831-4021	N.A	N.A	3															
	87831-4036	N.A	N.A	4															
	87831-4028	N.A	N.A	2															

PLATING OPTIONS:

- 1 - 0.05-0.13um/2-5uin GOLD IN CONTACT AREA AND 1.88um/75uin MIN. MATTE TIN IN SOLDER TAIL AREA OVER 1.27um/50uin MIN. NICKEL OVERALL.
- 2 - 0.38um/15uin GOLD IN CONTACT AREA AND 1.88um/75uin MIN. MATTE TIN IN SOLDER TAIL AREA OVER 1.27um/50uin MIN. NICKEL OVERALL.
- 3 - 0.76um/30uin GOLD IN CONTACT AREA AND 1.88um/75uin MIN. MATTE TIN IN SOLDER TAIL AREA OVER 1.27um/50uin MIN. NICKEL OVERALL.
- 4 - 2.50um/100uin MIN. MATTE TIN OVER 1.25um/50uin MIN. NICKEL OVERALL.

SEE SHEET 12.4.6.8-10 EC. NO. S2017-0022 DRAWN BY: IDRW:HEWARY 2016/07/04 CHKD: SCHEONG 2016/07/27 APPR: KHLIM 2016/07/28 REV: A5	QUALITY SYMBOLS ∇=0 ∇=0 ∇=0	GENERAL TOLERANCES (UNLESS SPECIFIED) <table border="1"> <tr> <th></th> <th>mm</th> <th>INCH</th> </tr> <tr> <td>4 PLACES</td> <td>±---</td> <td>±---</td> </tr> <tr> <td>3 PLACES</td> <td>±---</td> <td>±---</td> </tr> <tr> <td>2 PLACES</td> <td>±0.20</td> <td>±---</td> </tr> <tr> <td>1 PLACE</td> <td>±---</td> <td>±---</td> </tr> <tr> <td>0 PLACE</td> <td>±---</td> <td>±---</td> </tr> </table>		mm	INCH	4 PLACES	±---	±---	3 PLACES	±---	±---	2 PLACES	±0.20	±---	1 PLACE	±---	±---	0 PLACE	±---	±---	DIMENSION STYLE MM ONLY DRAWN BY: GMENARLY DATE: 2015/04/15 CHECKED BY: CGOH DATE: 2015/06/29 APPROVED BY: KHLIM DATE: 2015/06/29	SCALE: NTS DESIGN UNITS: METRIC THIRD ANGLE PROJECTION	TITLE: MILLIGRID 2MM PITCH, THROUGH HOLE VERTICAL SHROUDED HEADER molex MATERIAL NO. SEE TABLE DOCUMENT NO. SD-87831-0001	SHEET NO. 12 OF 13
		mm	INCH																					
	4 PLACES	±---	±---																					
	3 PLACES	±---	±---																					
2 PLACES	±0.20	±---																						
1 PLACE	±---	±---																						
0 PLACE	±---	±---																						
DRAFT WHERE APPLICABLE MUST REMAIN WITHIN DIMENSIONS		THIS DRAWING CONTAINS INFORMATION THAT IS PROPRIETARY TO MOLEX INCORPORATED AND SHOULD NOT BE USED WITHOUT WRITTEN PERMISSION																						

9 8 7 6 5 4 3 2 1

10 9 8 7 6 5 4 3 2 1

42 TO 50 CIRCUITS

CKT SIZE	ASSY P/N WITHOUT CAP IN TUBE	ASSY P/N WITH CAP IN TUBE	ASSY P/N WITH CAP IN T&R	PLATING OPTIONS	FRICTION LOCKS		SIDE SLOTS		CENTER POLARIZATION	PEG	DIMENSION								
					DUAL	CENTER	DUAL	SINGLE			A	B	C	D	E	F	G	H	
42	87831-4219	N.A	N.A	1							40.00	42.85	44.65	43.00	36.00	N.A	2.50	3.60±0.20	
	87831-4220	N.A	N.A	2	YES	N.A	YES	N.A	YES	N.A									
	87831-4221	N.A	N.A	3															
	87831-4236	N.A	N.A	4															
	87831-4228	N.A	N.A	2	YES	N.A	YES	N.A	YES	YES									2.50
87831-4229	N.A	N.A	3																
44	87831-4419	N.A	N.A	1							42.00	44.85	46.65	45.00	38.00	N.A	2.50	3.60±0.20	
	87831-4420	N.A	N.A	2	YES	N.A	YES	N.A	YES	N.A									
	87831-4421	N.A	N.A	3															
	87831-4436	N.A	N.A	4															
	87831-4428	N.A	N.A	2	YES	N.A	YES	N.A	YES	YES									2.50
87831-4429	N.A	N.A	3																
87831-4435	N.A	N.A	3	YES	N.A	YES	N.A	YES	YES	YES									
46	87831-4619	N.A	N.A	1							44.00	46.85	48.65	47.00	40.00	N.A	2.50	3.60±0.20	
	87831-4620	N.A	N.A	2	YES	N.A	YES	N.A	YES	N.A									
	87831-4621	N.A	N.A	3															
	87831-4636	N.A	N.A	4															
	87831-4628	N.A	N.A	2	YES	N.A	YES	N.A	YES	YES									2.50
87831-4629	N.A	N.A	3																
48	87831-4819	N.A	N.A	1							46.00	48.85	50.65	49.00	42.00	N.A	2.50	3.60±0.20	
	87831-4820	N.A	N.A	2	YES	N.A	YES	N.A	YES	N.A									
	87831-4821	N.A	N.A	3															
	87831-4836	N.A	N.A	4															
	87831-4828	N.A	N.A	2	YES	N.A	YES	N.A	YES	YES									2.50
87831-4829	N.A	N.A	3																
50	87831-5019	N.A	N.A	1							48.00	50.85	52.65	51.00	44.00	N.A	2.50	3.60±0.20	
	87831-5020	N.A	N.A	2	YES	N.A	YES	N.A	YES	N.A									
	87831-5021	N.A	N.A	3															
	87831-5036	N.A	N.A	4															
	87831-5028	N.A	N.A	2	YES	N.A	YES	N.A	YES	YES									2.50
87831-5029	N.A	N.A	3																
87831-5035	N.A	N.A	3	YES	N.A	YES	N.A	YES	YES	YES									

PLATING OPTIONS:

- 1 - 0.05-0.13um/2-5uin GOLD IN CONTACT AREA AND 1.88um/75uin MIN. MATTE TIN IN SOLDER TAIL AREA OVER 1.27um/50uin MIN. NICKEL OVERALL.
- 2 - 0.38um/15uin GOLD IN CONTACT AREA AND 1.88um/75uin MIN. MATTE TIN IN SOLDER TAIL AREA OVER 1.27um/50uin MIN. NICKEL OVERALL.
- 3 - 0.76um/30uin GOLD IN CONTACT AREA AND 1.88um/75uin MIN. MATTE TIN IN SOLDER TAIL AREA OVER 1.27um/50uin MIN. NICKEL OVERALL.
- 4 - 2.50um/100uin MIN. MATTE TIN OVER 1.25um/50uin MIN. NICKEL OVERALL.

SEE SHEET 1.2.4.6.8-10 IEC NO. S2017-0022 DRAWN BY: GMENARLY 2016/07/06 CHECKED BY: CHYK-SCHONG 2016/07/27 APPR: KHL IM 2016/07/28 REV: A5	QUALITY SYMBOLS √=0 √=0 √=0	GENERAL TOLERANCES (UNLESS SPECIFIED) 4 PLACES ± --- ± --- 3 PLACES ± --- ± --- 2 PLACES ± 0.20 ± --- 1 PLACE ± --- ± --- 0 PLACE ± --- ± ---	DIMENSION STYLE MM ONLY DRAWN BY: GMENARLY DATE: 2015/04/15 CHECKED BY: CGOH DATE: 2015/06/29 APPROVED BY: KHL IM DATE: 2015/06/29	SCALE: NTS DESIGN UNITS: METRIC THIRD ANGLE PROJECTION	TITLE: MILLIGRID 2MM PITCH, THROUGH HOLE VERTICAL SHROUDED HEADER molex MATERIAL NO. SEE TABLE DOCUMENT NO. SD-87831-0001 SHEET NO. 13 OF 13
	ANGULAR ± 3° DRAFT WHERE APPLICABLE MUST REMAIN WITHIN DIMENSIONS		THIS DRAWING CONTAINS INFORMATION THAT IS PROPRIETARY TO MOLEX INCORPORATED AND SHOULD NOT BE USED WITHOUT WRITTEN PERMISSION		

tb_frame_A3_P_AM_T
Rev. G 2012/01/11

9 8 7 6 5 4 3 2 1