

Excellent Integrated System Limited

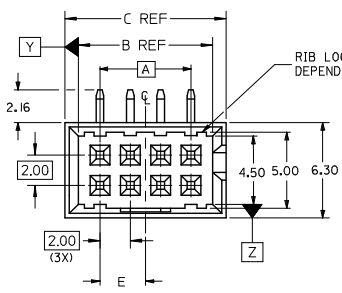
Stocking Distributor

Click to view price, real time Inventory, Delivery & Lifecycle Information:

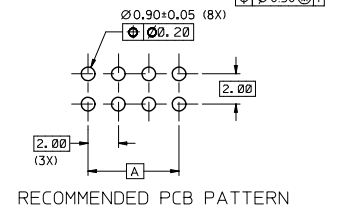
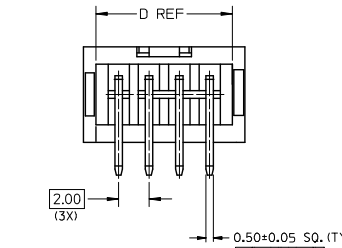
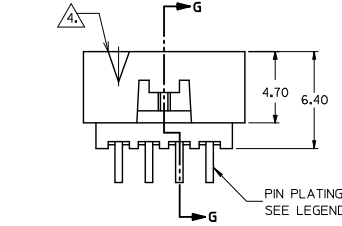
[Molex Connector Corporation](#)
[0878331033](#)

For any questions, you can email us directly:
sales@integrated-circuit.com

10 9 8 7 6 5 4 3 2 1

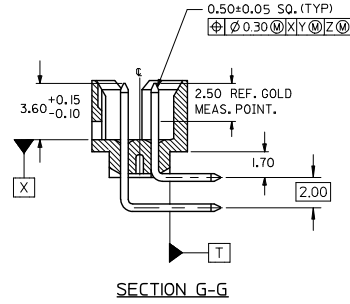


RIB LOCATIONS VARY DEPENDING ON CKT. SIZES.

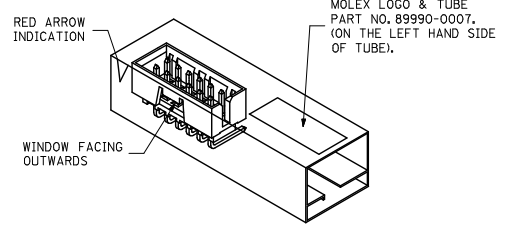


PART NUMBER LEGEND

- 87833 - * * 3 *
- CKT SIZE | PLATING OPTION
- 3 - 0.38µm/15µin GOLD IN CONTACT AREA AND 188µm/75µin MIN. TIN IN SOLDER TAIL AREA OVER 1.27µm/50µin MIN. NICKEL OVERALL.
 - 4 - 0.76µm/30µin GOLD IN CONTACT AREA AND 188µm/75µin MIN. TIN IN SOLDER TAIL AREA OVER 1.27µm/50µin MIN. NICKEL OVERALL.



PART NO.	CKT SIZE	DIMENSION				
		A	B	C	D	E
87833-043*	4	2.00	4.85	6.65	5.00	1.00
87833-063*	6	4.00	6.85	8.65	7.00	2.00
87833-083*	8	6.00	8.85	10.65	9.00	3.00
87833-103*	10	8.00	10.85	12.65	11.00	4.00
87833-123*	12	10.00	12.85	14.65	13.00	5.00



ORIENTATION OF PART IN TUBE.
(FOR THE REFERENCE OF PART/TUBE ASSEMBLY.)

NOTES:

1. FOR ILLUSTRATION PURPOSES, 8 CKT. SIZE WAFER IS SHOWN.
2. MATERIAL:
HOUSING: 30% GF, NYLON 46
UL 94v-0, COLOR BLACK
PIN : 0.50MM SQ.PHOSPHOR BRONZE
3. PIN PUSHOUT FORCE 0.91KG MIN.
4. CKT 4 & 6 HAS NO IDENTIFICATION TAG.
5. PRODUCT SPECIFICATION PS-87831-027 APPLIES.
6. THIS HEADER MATES WITH MOLEX:
a) CRIMP RECEPTACLE HOUSING, 51110 SERIES WITH CRIMP TERMINAL, 50394 SERIES.
b) 2MM MILLIGRID DUAL ROW IDT, 87568 SERIES.
7. PARTS TO BE PACKED IN TUBE WITH MOISTURE BARRIER BAG.
8. NO CENTRE POLARIZATION SLOT FOR CKT 4 AND 6.

ADD IN NOTES NO. 8 EC. NO. S2009-0964 DRAWN: YONGHONG 2009/07/08 CHKD: SKANG 2009/07/08 APPR: HLONG 2009/07/15	QUALITY SYMBOLS ▽=0 ▽=0	GENERAL TOLERANCES (UNLESS SPECIFIED)		DIMENSION STYLE MM ONLY		SCALE NTS	DESIGN UNITS METRIC	THIRD ANGLE PROJECTION		
		4 PLACES ± --- ± ---		DRAWN BY ATSEE		DATE 2004/09/08		TITLE MGRID, SHROUDED HEADER W/LOCKING FEATURE & SINGLE SIDE SLOT, R/A		
		3 PLACES ± --- ± ---		CHECKED BY KCLING		DATE 2004/09/23		MOLEX INCORPORATED		
		2 PLACES ± 0.2 ± ---		APPROVED BY SKTOH		DATE 2004/09/23		MATERIAL NO. SEE TABLE DOCUMENT NO. SD-87833-037 SHEET NO. 1 OF 1		
1 PLACE ± --- ± ---		ANGULAR ± 3 °		DRAFT WHERE APPLICABLE MUST REMAIN WITHIN DIMENSIONS						
THIS DRAWING CONTAINS INFORMATION THAT IS PROPRIETARY TO MOLEX INCORPORATED AND SHOULD NOT BE USED WITHOUT WRITTEN PERMISSION										

9 8 7 6 5 4 3 2 1