



**Distributor of Molex Connector Corporation: Excellent Integrated System Limited**  
Datasheet of 0901522108 - Connector Receptacle 8 Position 0.100" (2.54mm) Tin Through  
Hole, Right Angle

Contact us: [sales@integrated-circuit.com](mailto:sales@integrated-circuit.com) Website: [www.integrated-circuit.com](http://www.integrated-circuit.com)

---

## **Excellent Integrated System Limited**

Stocking Distributor

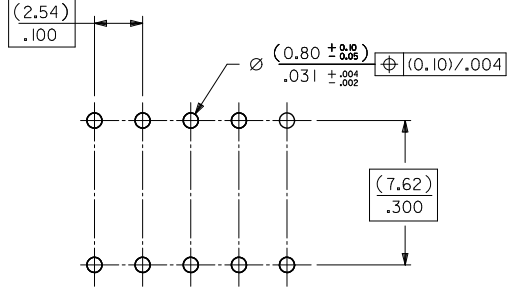
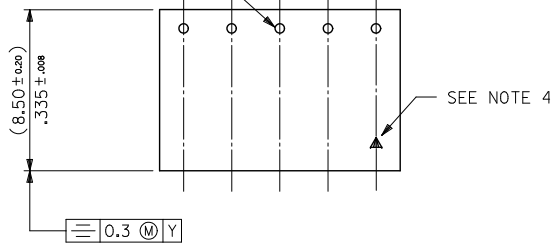
Click to view price, real time Inventory, Delivery & Lifecycle Information:

[Molex Connector Corporation](#)  
[0901522108](#)

For any questions, you can email us directly:  
[sales@integrated-circuit.com](mailto:sales@integrated-circuit.com)

Contact us: [sales@integrated-circuit.com](mailto:sales@integrated-circuit.com) Website: [www.integrated-circuit.com](http://www.integrated-circuit.com)

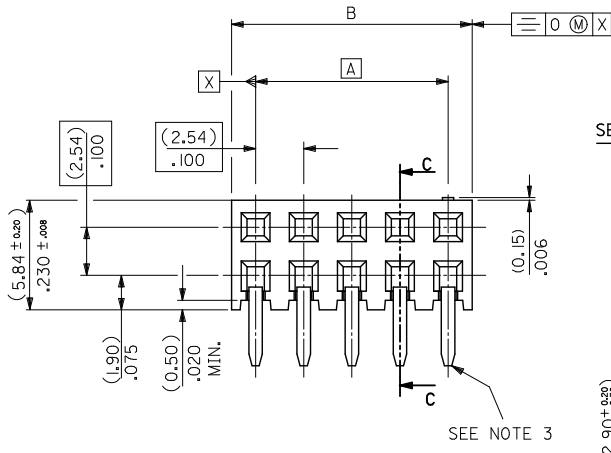
TERMINAL RETENTION FEATURE



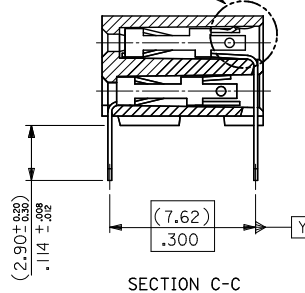
RECOMMENDED P.C. BOARD HOLE PATTERN

NOTES

- 1) CONTACT-PLATED PHOSPHOR BRONZE.
- 2) HOUSING-15% GLASS FILLED POLYESTER. COLOUR-BLACK.
- 3) COMPATIBLE WITH PCB HOLE PATTERN.
- 4) THIS MARK INDICATES CIRCUIT NO.1.
- 5) FOR (0.635) ± .025 SQ. MALE PINS THE LENGTH MUST BE (5.65) ± .222 MIN & (7.00) ± .276 MAX. TO ENSURE GOOD CONNECTION WITH CONTACT.
- 6) PRODUCT SPECIFICATION: PS-99020-0001
- 7) RECOMMENDED PCB THICKNESS 1.6MM

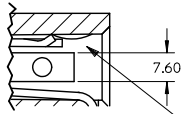


SEE DETAIL "A"



SECTION C-C

DETAIL "A"



TERMINAL RETENTION FEATURE

SHT385, UPDATE SEC C-C EC NO: S2011-1033 DRAWN/ISSUE: 2011/06/06 CHKD:SKANG 2011/06/21 APPR:HLONG 2011/06/21	QUALITY SYMBOLS	GENERAL TOLERANCES (UNLESS SPECIFIED)	DIMENSION STYLE	SCALE	DESIGN UNITS	THIRD ANGLE PROJECTION															
	$\sqrt{R} = 0$ $\sqrt{R} = 0$ $\sqrt{R} = 0$	<table border="1"> <thead> <tr> <th></th> <th>mm</th> <th>INCH</th> </tr> </thead> <tbody> <tr> <td>4 PLACES</td> <td>± ---</td> <td>± ---</td> </tr> <tr> <td>3 PLACES</td> <td>± ---</td> <td>± ---</td> </tr> <tr> <td>2 PLACES</td> <td>± 0.20</td> <td>± .008</td> </tr> <tr> <td>1 PLACE</td> <td>± ---</td> <td>± ---</td> </tr> </tbody> </table>		mm	INCH	4 PLACES	± ---	± ---	3 PLACES	± ---	± ---	2 PLACES	± 0.20	± .008	1 PLACE	± ---	± ---	MM ONLY	NTS	METRIC	
		mm	INCH																		
	4 PLACES	± ---	± ---																		
3 PLACES	± ---	± ---																			
2 PLACES	± 0.20	± .008																			
1 PLACE	± ---	± ---																			
DESCRIPTION	DRAFT WHERE APPLICABLE MUST REMAIN WITHIN DIMENSIONS	DRAWN BY: DB CHECKED BY: DB APPROVED BY: MLONG DATE: 1987/07/14 DATE: 1987/07/14 DATE: 2010/01/14	TITLE	C-GRID PCB CONN DR HORZ																	
REV			MATERIAL NO.	DOCUMENT NO.	SHEET NO.																
			SEE TABLE	SDA-90152	1 OF 5																
			THIS DRAWING CONTAINS INFORMATION THAT IS PROPRIETARY TO MOLEX INCORPORATED AND SHOULD NOT BE USED WITHOUT WRITTEN PERMISSION																		

Contact us: sales@integrated-circuit.com Website: www.integrated-circuit.com

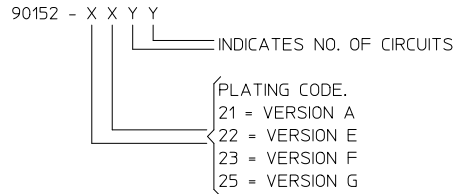
PART NO.	CKT	DIM. A	DIM. B	PCS/TUBE	
90152-XX04	4	(2.54)	.100	(5.08) .200	109
06	6	(5.08)	.200	(7.62) .300	73
08	8	(7.62)	.300	(10.16) .400	55
10	10	(10.16)	.400	(12.70) .500	44
12	12	(12.70)	.500	(15.24) .600	36
14	14	(15.24)	.600	(17.78) .700	31
16	16	(17.78)	.700	(20.32) .800	27
18	18	(20.32)	.800	(22.86) .900	24
20	20	(22.86)	.900	(25.40) 1.000	22
22	22				20
24	24	(27.94)	1.100	(30.48) 1.200	18
26	26	(30.48)	1.200	(33.02) 1.300	16
28	28				14
30	30	(35.56)	1.400	(38.10) 1.500	14
32	32				13
34	34	(40.64)	1.600	(43.18) 1.700	12
36	36	(43.18)	1.700	(45.72) 1.800	12
38	38	(45.72)	1.800	(48.26) 1.900	11
40	40	(48.26)	1.900	(50.80) 2.000	11
42	42				10
44	44	(53.34)	2.100	(55.88) 2.200	10
46	46				10
48	48				9
50	50	(60.96)	2.400	(63.50) 2.500	8
52	52				8
54	54				8
56	56	(68.58)	2.700	(71.12) 2.800	7
58	58				7
60	60	(73.66)	2.900	(76.20) 3.000	7
62	62				6
90152-XX64	64	(78.74)	3.100	(81.28) 3.200	5

PLATING VERSION A  
 PRE-PLATED HOT DIP TIN  
 1.0 TO 2.5 microns (.00004" TO .00010").

PLATING VERSION E  
 1.27 TO 1.78 microns (.00005" TO .00007") NICKEL  
 OVERALL, 0.38 TO 0.64 microns (.000015" TO .000025")  
 GOLD ON CONTACT AREA (OVER NICKEL).  
 3 TO 5 microns (.00012" TO .00020") TIN  
 ON SOLDER TAILS (OVER NICKEL).

PLATING VERSION F  
 1.27 TO 1.78 microns (.00005" TO .00007") NICKEL  
 OVERALL, 0.76 TO 1.0 microns (.00003" TO .00004")  
 GOLD ON CONTACT AREA (OVER NICKEL).  
 3 TO 5 microns (.00012" TO .00020") TIN  
 ON SOLDER TAILS (OVER NICKEL).

PLATING VERSION G  
 1.27 TO 1.78 microns (.00005" TO .00007") NICKEL  
 OVERALL, 0.125 TO 0.20 microns (.000005" TO .0000079")  
 GOLD ON CONTACT AREA (OVER NICKEL).  
 3 TO 5 microns (.00012" TO .00020") TIN  
 ON SOLDER TAILS (OVER NICKEL).



STANDARD PRODUCTS

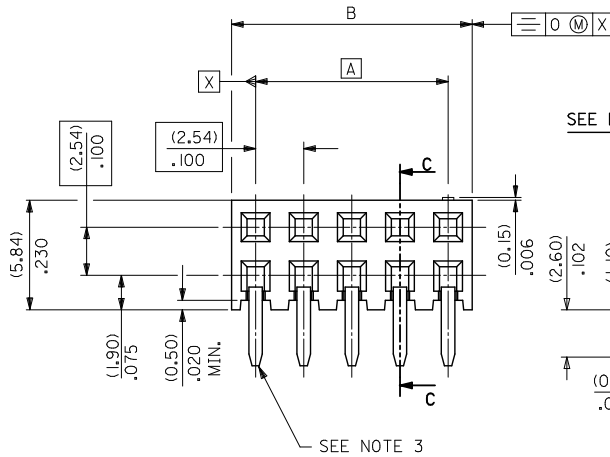
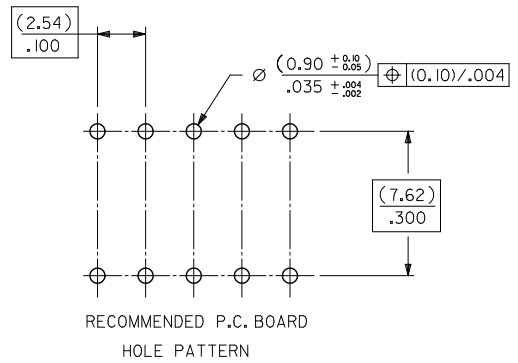
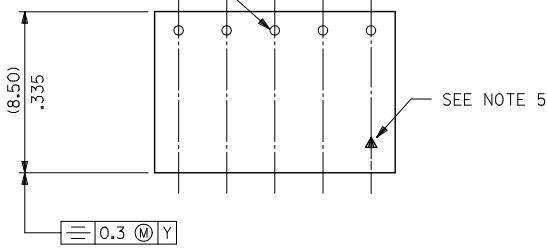
SHT385, UPDATE SEC C-C EC NO. S2011-1033 DRAWN BY: 2011/06/06 CHKD:SKANG 2011/06/21 APPR:HLONG 2011/06/21	QUALITY SYMBOLS	GENERAL TOLERANCES (UNLESS SPECIFIED)	DIMENSION STYLE	SCALE	DESIGN UNITS	THIRD ANGLE PROJECTION
	$\nabla=0$ $\nabla=0$ $\nabla=0$	4 PLACES ± --- ± --- 3 PLACES ± --- ± --- 2 PLACES ± 0.20 ± .008 1 PLACE ± --- ± --- ANGULAR ± 2 °	MM ONLY	NTS	METRIC	
	DRAWN BY: DB CHECKED BY: DB APPROVED BY: MLONG	DATE: 1987/07/14 DATE: 1987/07/14 DATE: 2010/01/14	TITLE			C-GRID PCB CONN DR HORZ
	MATERIAL NO. SEE TABLE	DATE: 2010/01/14	MOLEX INCORPORATED	DOCUMENT NO. SDA-90152	SHEET NO. 2 OF 5	

DRAFT WHERE APPLICABLE MUST REMAIN WITHIN DIMENSIONS

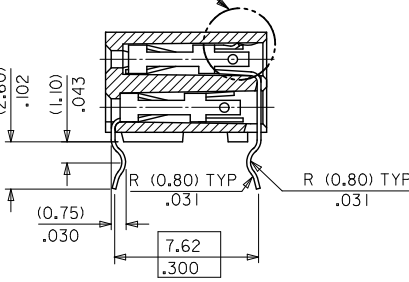
THIS DRAWING CONTAINS INFORMATION THAT IS PROPRIETARY TO MOLEX INCORPORATED AND SHOULD NOT BE USED WITHOUT WRITTEN PERMISSION

Contact us: [sales@integrated-circuit.com](mailto:sales@integrated-circuit.com) Website: [www.integrated-circuit.com](http://www.integrated-circuit.com)

TERMINAL RETENTION FEATURE



SEE DETAIL "A"

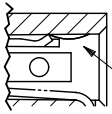


SECTION C-C

NOTES

- 1) CONTACT-PLATED PHOSPHOR BRONZE.
- 2) HOUSING-15% GLASS FILLED POLYESTER. COLOUR-BLACK.
- 3) COMPATIBLE WITH PCB HOLE PATTERN.
- 4) RECOMMENDED PC BOARD THICKNESS  $(1.4 \pm 2) / .055 \pm 0.008$
- 5) THIS MARK INDICATES CIRCUIT NO.1.
- 6) FOR (0.635)/.025 SQ. MALE PINS THE LENGTH MUST BE (5.65)/.222 MIN & (7.00)/.276 MAX. TO ENSURE GOOD CONNECTION WITH CONTACT.

DETAIL "A"



TERMINAL RETENTION FEATURE

SHT385, UPDATE SEC C-C EC NO. S2011-1033 DRAWN/ISSUE 2011/06/06 CHKD:SKANG 2011/06/21 APPR:HLONG 2011/06/21	QUALITY SYMBOLS ▽=0 ▽=0 ▽=0	GENERAL TOLERANCES (UNLESS SPECIFIED)		DIMENSION STYLE MM ONLY		SCALE NTS	DESIGN UNITS METRIC	THIRD ANGLE PROJECTION	
		4 PLACES ± --- ± ---	3 PLACES ± --- ± ---	2 PLACES ± 0.20 ± .008	1 PLACE ± --- ± ---	ANGULAR ± 2 °	DRAWN BY DB	DATE 1987/07/14	TITLE C-GRID PCB CONN DR HORZ
REV	DESCRIPTION	DRAFT WHERE APPLICABLE MUST REMAIN WITHIN DIMENSIONS		MATERIAL NO. SEE TABLE		MOLEX INCORPORATED		DOCUMENT NO. SDA-90152	SHEET NO. 3 OF 5
				THIS DRAWING CONTAINS INFORMATION THAT IS PROPRIETARY TO MOLEX INCORPORATED AND SHOULD NOT BE USED WITHOUT WRITTEN PERMISSION					



**Distributor of Molex Connector Corporation: Excellent Integrated System Limited**  
 Datasheet of 0901522108 - Connector Receptacle 8 Position 0.100" (2.54mm) Tin Through Hole, Right Angle

Contact us: [sales@integrated-circuit.com](mailto:sales@integrated-circuit.com) Website: [www.integrated-circuit.com](http://www.integrated-circuit.com)

PART NO.	CKT	DIM. A		DIM. B		PCS/TUBE
90152-XX04	4	(2.54)	.100	(5.08)	.200	109
06	6	(5.08)	.200	(7.62)	.300	73
08	8	(7.62)	.300	(10.16)	.400	55
10	10	(10.16)	.400	(12.70)	.500	44
12	12	(12.70)	.500	(15.24)	.600	36
14	14	(15.24)	.600	(17.78)	.700	31
16	16	(17.78)	.700	(20.32)	.800	27
18	18	(20.32)	.800	(22.86)	.900	24
20	20	(22.86)	.900	(25.40)	1.000	22
22	22					20
24	24	(27.94)	1.100	(30.48)	1.200	18
26	26	(30.48)	1.200	(33.02)	1.300	16
28	28					14
30	30	(35.56)	1.400	(38.10)	1.500	14
32	32					13
34	34	(40.64)	1.600	(43.18)	1.700	12
36	36	(43.18)	1.700	(45.72)	1.800	12
38	38	(45.72)	1.800	(48.26)	1.900	11
40	40	(48.26)	1.900	(50.80)	2.000	11
42	42					10
44	44	(53.34)	2.100	(55.88)	2.200	10
46	46					10
48	48					9
50	50	(60.96)	2.400	(63.50)	2.500	8
52	52					8
54	54					8
56	56	(68.58)	2.700	(71.12)	2.800	7
58	58					7
60	60	(73.66)	2.900	(76.20)	3.000	7
62	62					6
90152-XX64	64	(78.74)	3.100	(81.28)	3.200	5

**PLATING VERSION A**  
 PRE-PLATED HOT DIP TIN  
 1.0 TO 2.5 microns (.00004" TO .00010").

**PLATING VERSION E**  
 1.27 TO 1.78 microns (.00005" TO .00007") NICKEL  
 OVERALL, 0.38 TO 0.64 microns (.000015" TO .000025")  
 GOLD ON CONTACT AREA (OVER NICKEL).  
 3 TO 5 microns (.00012" TO .00020") TIN  
 ON SOLDER TAILS (OVER NICKEL).

**PLATING VERSION F.**  
 1.27 TO 1.78 microns (.00005" TO .00007") NICKEL  
 OVERALL, 0.76 TO 1.0 microns (.00003" TO .00004")  
 GOLD ON CONTACT AREA (OVER NICKEL).  
 3 TO 5 microns (.00012" TO .00020") TIN  
 ON SOLDER TAILS (OVER NICKEL).

**PLATING VERSION G.**  
 1.27 TO 1.78 microns (.00005" TO .00007") NICKEL  
 OVERALL, 0.125 TO 0.20 microns (.000005" TO .0000079")  
 GOLD ON CONTACT AREA (OVER NICKEL).  
 3 TO 5 microns (.00012" TO .00020") TIN  
 ON SOLDER TAILS (OVER NICKEL).

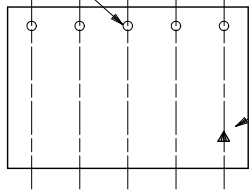
90152-XXYY  
 INDICATES NO. OF CIRCUITS.  
 PLATING CODE.  
 31 = VERSION A.  
 32 = VERSION E.  
 33 = VERSION F.  
 35 = VERSION G.

SHT385, UPDATE SEC C-C EC NO. S2011-1033 DRAWN BY: IDRWANATSEE 2011/06/06 CHKD: SKANG 2011/06/21 APPR: HLONG 2011/06/21	QUALITY SYMBOLS	GENERAL TOLERANCES (UNLESS SPECIFIED)	DIMENSION STYLE	SCALE	DESIGN UNITS	THIRD ANGLE PROJECTION																		
	$\nabla=0$ $\nabla=0$ $\nabla=0$	<table border="1"> <tr><th colspan="2">mm</th><th>INCH</th></tr> <tr><td>4 PLACES</td><td>±---</td><td>±---</td></tr> <tr><td>3 PLACES</td><td>±---</td><td>±---</td></tr> <tr><td>2 PLACES</td><td>±0.20</td><td>±.008</td></tr> <tr><td>1 PLACE</td><td>±---</td><td>±---</td></tr> <tr><td colspan="2">ANGULAR</td><td>± 2 °</td></tr> </table>	mm		INCH	4 PLACES	±---	±---	3 PLACES	±---	±---	2 PLACES	±0.20	±.008	1 PLACE	±---	±---	ANGULAR		± 2 °	MM ONLY	NTS	METRIC	
	mm		INCH																					
	4 PLACES	±---	±---																					
3 PLACES	±---	±---																						
2 PLACES	±0.20	±.008																						
1 PLACE	±---	±---																						
ANGULAR		± 2 °																						
DRAWN BY: DB CHECKED BY: DB APPROVED BY: MLONG	<table border="1"> <tr><th>DATE</th><th>TITLE</th></tr> <tr><td>1987/07/14</td><td rowspan="3">C-GRID PCB CONN DR HORZ</td></tr> <tr><td>1987/07/14</td></tr> <tr><td>2010/01/14</td></tr> </table>	DATE	TITLE	1987/07/14	C-GRID PCB CONN DR HORZ	1987/07/14	2010/01/14	MATERIAL NO.	DOCUMENT NO.	SHEET NO.														
DATE	TITLE																							
1987/07/14	C-GRID PCB CONN DR HORZ																							
1987/07/14																								
2010/01/14																								
DRAFT WHERE APPLICABLE MUST REMAIN WITHIN DIMENSIONS	SEE TABLE THIS DRAWING CONTAINS INFORMATION THAT IS PROPRIETARY TO MOLEX INCORPORATED AND SHOULD NOT BE USED WITHOUT WRITTEN PERMISSION	SDA-90152	4 OF 5																					

Contact us: sales@integrated-circuit.com Website: www.integrated-circuit.com

PART NUMBER	CKT. SIZE	PIN VOID	KINKED PINS	NO. PER TUBE
90152-6234	2 X 17	21	NONE	12
90152-5242	2 X 21	5	NONE	10
90152-7130	2 X 15	NONE	1,2 & 29,30	14

TERMINAL RETENTION FEATURE



SEE NOTE 2.

NOTES

- 1) FOR DIMENSIONS SEE SHEET 1.
- 2) THIS MARK INDICATES CIRCUIT NO.1.
- 3) SOLDER TAIL OF TERMINAL IN VOIDED CAVITY MUST BE CROPPED AS SHOWN OR TERMINAL REMOVED.

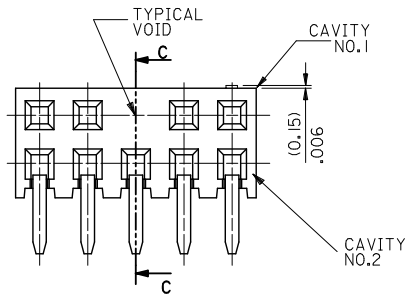
90152-XXYY

INDICATES NO. OF CIRCUITS.

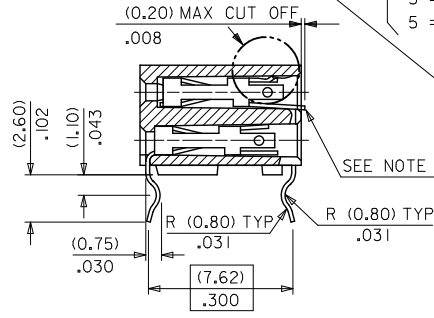
- PLATING CODE.  
 1 = VERSION A.  
 2 = VERSION E.  
 3 = VERSION F.  
 5 = VERSION G.

OPTIONS

- 2 = REGULAR
- 3 = KINKED
- 5 = VOIDS
- 6 = KINKS & VOIDS
- 7 = SELECTIVE KINKS

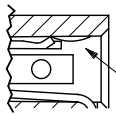


SEE DETAIL "A"



SECTION C-C

DETAIL "A"



TERMINAL RETENTION FEATURE

SHT385, UPDATE SEC C-C EC NO. S2011-1033 DRAWN/ISSUE 2011/06/06 CHKD:SKANG 2011/06/21 APPR:MLONG 2011/06/21	QUALITY SYMBOLS ▽=0 ▽=0 ▽=0	GENERAL TOLERANCES (UNLESS SPECIFIED)		DIMENSION STYLE MM ONLY		SCALE	DESIGN UNITS	THIRD ANGLE PROJECTION	
		mm	INCH	DATE	TITLE	NTS	METRIC		
		4 PLACES ± ---	± ---	DB	1987/07/14			C-GRID PCB CONN DR HORZ	
		3 PLACES ± ---	± ---	DB	1987/07/14			MOLEX INCORPORATED	
		2 PLACES ± 0.20	± .008	DB	1987/07/14			MATERIAL NO. SEE TABLE	
		1 PLACE ± ---	± ---	MLONG	2010/01/14			DOCUMENT NO. SDA-90152	
		ANGULAR ± 2 °		DRAFT WHERE APPLICABLE MUST REMAIN WITHIN DIMENSIONS				SHEET NO. 5 OF 5	
<p>THIS DRAWING CONTAINS INFORMATION THAT IS PROPRIETARY TO MOLEX INCORPORATED AND SHOULD NOT BE USED WITHOUT WRITTEN PERMISSION</p>									