

## Excellent Integrated System Limited

Stocking Distributor

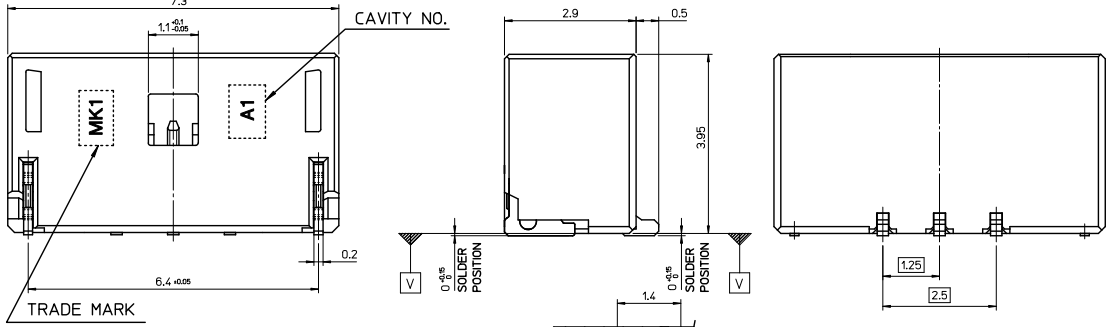
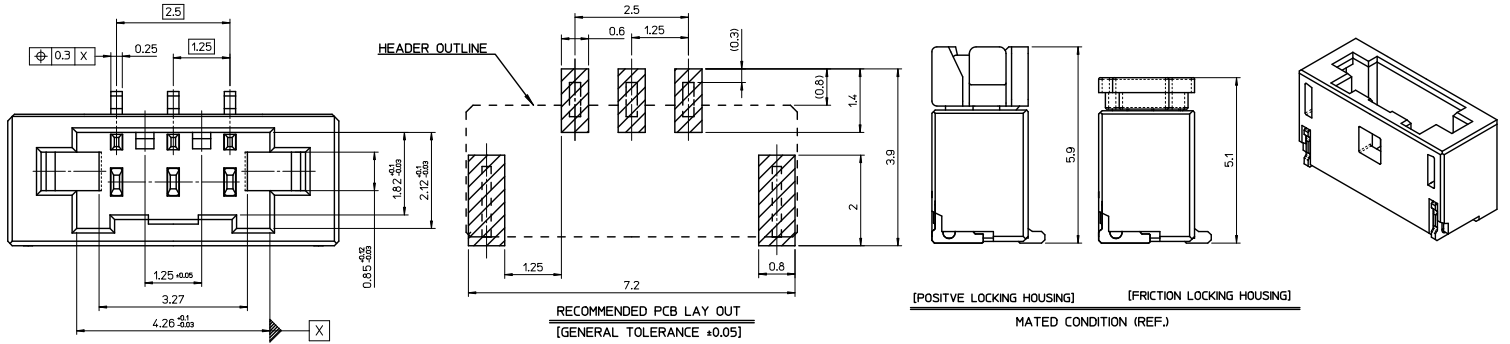
Click to view price, real time Inventory, Delivery & Lifecycle Information:

[Molex Connector Corporation](#)  
[1041300310](#)

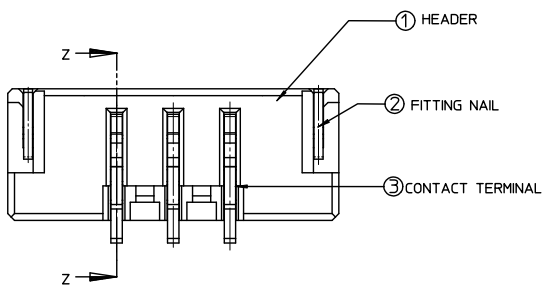
For any questions, you can email us directly:

[sales@integrated-circuit.com](mailto:sales@integrated-circuit.com)

10 9 8 7 6 5 4 3 2 1



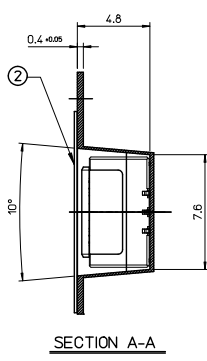
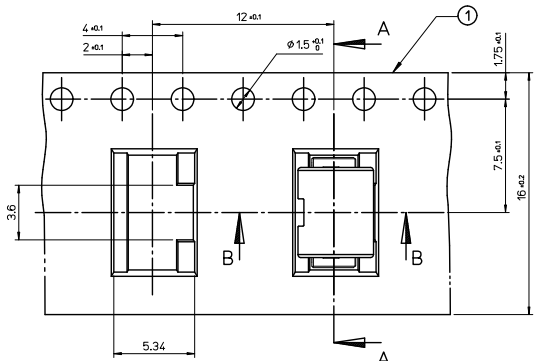
- NOTES.**
- MATED WITH : 104131-0300 / 104131-0310
  - MATERIALS.
    - HEADER : LCP E130I, GLASS FILLED, UL 94V-0 HALOGEN FREE, COLOR OF NATURAL
    - CONTACT TERMINAL : PHOSPHOR BRONZE, 0.25mm Thickness
    - FITTING NAIL : PHOSPHOR BRONZE, 0.2mm Thickness
  - FINISHES.
    - CONTACT TERMINAL : PURE-TIN PLATING ON OVERALL. THICKNESS : 3.0µm-5.0µm UNDER PLATING Ni OVERALL. THICKNESS : 1.25µm-3.75µm
    - FITTING NAIL : PURE-TIN PLATING ON OVERALL. THICKNESS : 3.0µm-5.0µm UNDER PLATING Ni OVERALL. THICKNESS : 1.25µm-3.75µm
  - COPLANALITH OF SOLDER TAIL (PEAK TEMP. : 260°C) BEFORE & AFTER REFLOW : 0.08MAX



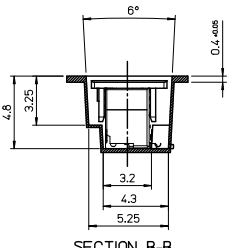
RELEASED EC NO: KOR2012-0059 DRWN: JHPARK01 CHKD: SHCHU APPR: YUNSIKKIM 2011/12/19 2011/12/19 2011/12/19	QUALITY SYMBOLS ▽=0 ▽=0	GENERAL TOLERANCES (UNLESS SPECIFIED)		DIMENSION STYLE MM ONLY		SCALE DESIGN UNITS METRIC	THIRD ANGLE PROJECTION
		4 PLACES ± --- ± --- 3 PLACES ± --- ± --- 2 PLACES ± 0.15 ± --- 1 PLACE ± 0.15 ± --- ANGULAR ± 1 °	DRAWN BY JHPARK01 DATE 2011/12/19	CHECKED BY SHCHU DATE 2011/12/19	TITLE 1.25MM WTB CONN. 3P HEADER ASS'Y		ORDER NUMBER 104130-0310
DRAFT WHERE APPLICABLE MUST REMAIN WITHIN DIMENSIONS	MATERIAL NO. 1041300310	APPROVED BY YUNSIKKIM DATE 2011/12/19	MOLEX INCORPORATED	DOCUMENT NO. SD-104130-001	SHEET NO. 1 OF 01		

10 9 8 7 6 5 4 3 2 1

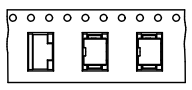
10 9 8 7 6 5 4 3 2 1



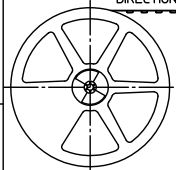
PULL OUT DIRECTION



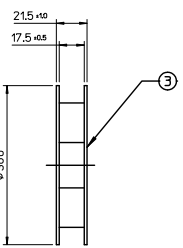
SECTION B-B



PULL OUT DIRECTION



PLASTIC BOBBIN



NOTES

1. QUANTITY OF CONNECTORS : 1500 PCS/REEL
2. LEAD LENGTH
3. PEELING OFF FORCE OF COVER TAPE : 0.1N-0.59N(10.2GF~60GF)  
 (PEELING DIRECTION AS SHOW IN FOLLOW FIG.)  
 PEELING OFF SPEED : 300mm/Min.(Ref.)
4. FLASH IN ANY PORTION SHOULD BE LESS THAN 0.20mm MAX.
5. UNLESS OTHERWISE SPECIFIED INNER R0.2 MAX
6. DRAFT ANGLE 3°MAX

[TABLE]

1041300310	104130-0310	16.0mm	104130-9901
MATERIAL NO.	CONNECTOR	TAPE WIDTH	EMBOSS TAPE

3	PLASTIC BOBBIN	HI P.S	WHITE
2	COVER TAPE	PET ANTISTATIC	13.3m
1	CARRIER (EMBOSS) TAPE	PET ANTISTATIC	
NO.	DESCRIPTION	MATERIAL	REMARK

ORDER NO 104130-0310

RELEASED EC NO: K0R2012-0059 DRAWN: JIPARK01 CHKD: SICHU APPR: YUNSIKKIM 2011/12/19 2011/12/19 2011/12/19	QUALITY SYMBOLS ▽=0 ▽=0	GENERAL TOLERANCES (UNLESS SPECIFIED) 4 PLACES ± --- ± --- 3 PLACES ± --- ± --- 2 PLACES ± --- ± --- 1 PLACE ± 0.25 ± --- ANGULAR ± 3 °	DIMENSION STYLE MM ONLY DRAWN BY: JB. JIN CHECKED BY: SH. CHU APPROVED BY: YUNSIKKIM DATE: 2010/01/21 DATE: 2010/01/21 DATE: 2011/12/29	SCALE DESIGN UNITS METRIC THIRD ANGLE PROJECTION	TITLE EMBOSS PACKAGE 1.25 WIRE TO BOARD CONN. HEADER ASS'Y-3P MOLEX INCORPORATED	SHEET NO. 1 OF 1
	DRAFT WHERE APPLICABLE MUST REMAIN WITHIN DIMENSIONS	MATERIAL NO. 1041300310	DOCUMENT NO. SD-104130-002	THIS DRAWING CONTAINS INFORMATION THAT IS PROPRIETARY TO MOLEX INCORPORATED AND SHOULD NOT BE USED WITHOUT WRITTEN PERMISSION		
	REV A	DESCRIPTION				
	Molex logo and text: MOLEX INCORPORATED					

9 8 7 6 5 4 3 2 1