

Excellent Integrated System Limited

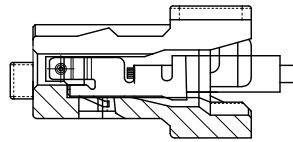
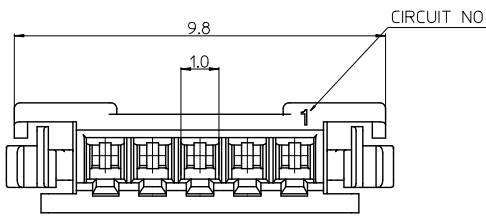
Stocking Distributor

Click to view price, real time Inventory, Delivery & Lifecycle Information:

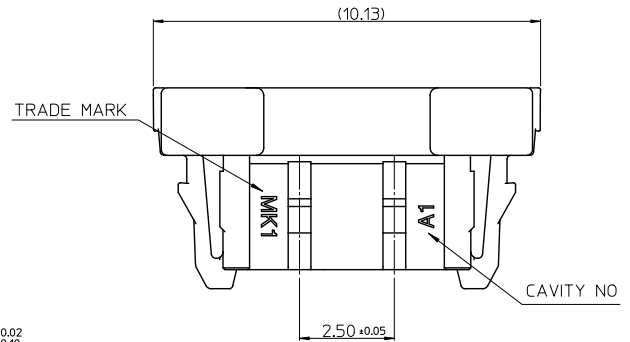
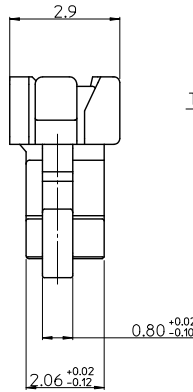
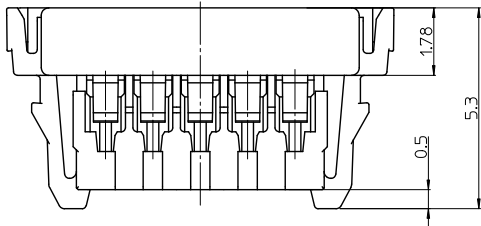
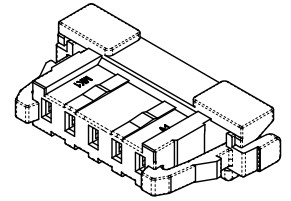
[Molex Connector Corporation](#)
[1041310500](#)

For any questions, you can email us directly:
sales@integrated-circuit.com

10 9 8 7 6 5 4 3 2 1

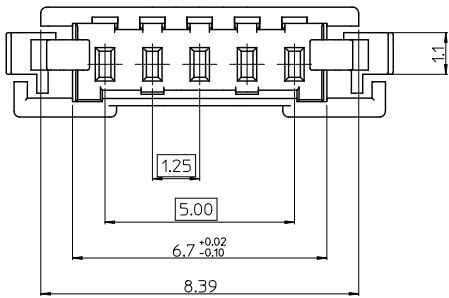


MATED CONDITION
[REFERENCE]



NOTES.

- MATED WITH : 104130-0510
- MATERIAL :
LCP E130i, GLASS FILLED, UL94V-0
HALOGEN FREE, COLOR OF NATURAL
- APPLICABLE TERMINAL : 104539-8102



ORDER NO 104031-0500

RELEASED EC NO: KOR2012-0059 DRWN: JHPARK01 2011/12/20 CHKD: SHCHU 2011/12/20 APPR: YUNSIKKIM 2011/12/29 REV: A	QUALITY SYMBOLS ▽=0 ▽=0	GENERAL TOLERANCES (UNLESS SPECIFIED)		DIMENSION STYLE MM ONLY		SCALE 10/1	DESIGN UNITS METRIC	THIRD ANGLE PROJECTION			
		4 PLACES ± --- ± ---	mm INCH	DRAWN BY JHPARK01	DATE 2011/12/20	TITLE 1.25MM W-T-B CONN.5P HOUSING (POSITIVE LOCKING)					
		3 PLACES ± --- ± ---		CHECKED BY SHCHU	DATE 2011/12/20	MOLEX INCORPORATED					
		2 PLACES ± 0.15 ± --- 1 PLACE ± 0.20 ± --- ANGULAR ± 1 °		APPROVED BY YUNSIKKIM	DATE 2011/12/29	MATERIAL NO. 1041310500	DOCUMENT NO. SD-104131-003	SHEET NO. 1 OF 1			
DRAFT WHERE APPLICABLE MUST REMAIN WITHIN DIMENSIONS		THIS DRAWING CONTAINS INFORMATION THAT IS PROPRIETARY TO MOLEX INCORPORATED AND SHOULD NOT BE USED WITHOUT WRITTEN PERMISSION									

9 8 7 6 5 4 3 2 1