

Excellent Integrated System Limited

Stocking Distributor

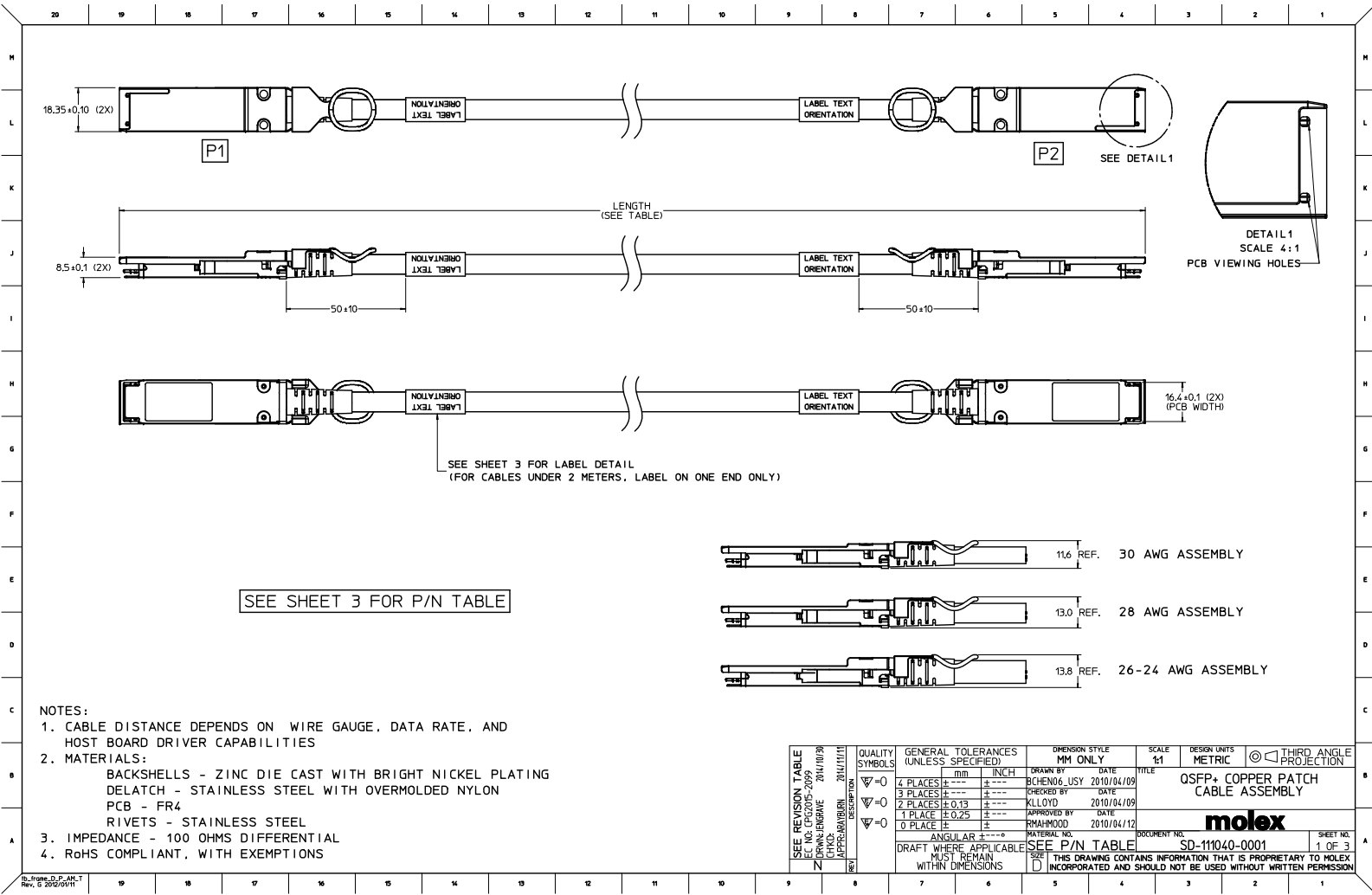
Click to view price, real time Inventory, Delivery & Lifecycle Information:

[Molex Connector Corporation](#)

[1110403504](#)

For any questions, you can email us directly:

sales@integrated-circuit.com



SEE SHEET 3 FOR P/N TABLE

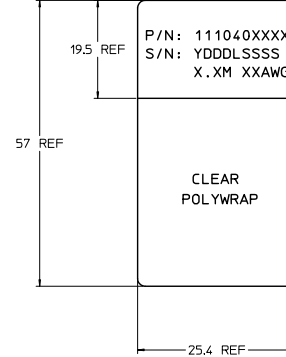
- NOTES:**
- CABLE DISTANCE DEPENDS ON WIRE GAUGE, DATA RATE, AND HOST BOARD DRIVER CAPABILITIES
 - MATERIALS:**
 - BACKSHELLS - ZINC DIE CAST WITH BRIGHT NICKEL PLATING
 - DELATCH - STAINLESS STEEL WITH OVERMOLDED NYLON
 - PCB - FR4
 - RIVETS - STAINLESS STEEL
 - IMPEDANCE - 100 OHMS DIFFERENTIAL
 - RoHS COMPLIANT, WITH EXEMPTIONS

QUALITY SYMBOLS	GENERAL TOLERANCES (UNLESS SPECIFIED)		DIMENSION STYLE		SCALE	DESIGN UNITS	THIRD ANGLE PROJECTION
	mm	INCH	MM ONLY	DATE			
4 PLACES ±	---	---	BCHEN06_USY	2010/04/09	1:1	METRIC	 QSFP+ COPPER PATCH CABLE ASSEMBLY molex
3 PLACES ±	---	---	---	---			
2 PLACES ±	0.13	---	KLOYD	2010/04/09			
1 PLACE ±	0.25	---	---	---			
0 PLACE ±	---	---	RAHMOOD	2010/04/12			
ANGULAR ±	---	---	SEE P/N TABLE				DOCUMENT NO. SD-111040-0001
DRAFT WHERE APPLICABLE		MUST REMAIN WITHIN DIMENSIONS		SIZE D	THIS DRAWING CONTAINS INFORMATION THAT IS PROPRIETARY TO MOLEX INCORPORATED AND SHOULD NOT BE USED WITHOUT WRITTEN PERMISSION		

PART NUMBER TABLE

MOLEX P/N	LENGTH (M)	LENGTH TOLERANCE (mm)	AWG
1110401044	0.35	±30	30
1110401054	0.5	±30	30
1110401074	0.75	±30	30
1110401104	1.0	±50	30
1110401204	2.0	±50	30
1110401304	3.0	±50	30
1110401324	3.2	±50	30
1110401404	4.0	±50	30
1110401504	5.0	±80	30
1110401704	7.0	±80	30
1110402054	0.5	±30	28
1110402104	1.0	±50	28
1110402204	2.0	±50	28
1110402304	3.0	±50	28
1110402404	4.0	±50	28
1110402504	5.0	±80	28
1110402604	6.0	±80	28
1110402704	7.0	±80	28
1110403054	0.5	±50	26
1110403104	1.0	±50	26
1110403204	2.0	±50	26
1110403304	3.0	±50	26
1110403404	4.0	±50	26
1110403504	5.0	±80	26
1110403604	6.0	±80	26
1110403704	7.0	±80	26
1110404054	0.5	±50	24
1110404104	1.0	±50	24
1110404204	2.0	±50	24
1110404304	3.0	±50	24
1110404404	4.0	±50	24
1110404504	5.0	±80	24
1110404604	6.0	±80	24
1110404704	7.0	±80	24
1110404804	8.0	±80	24
1110409010	10.0	±80	30
1110409011	10.0	±80	28
1110409012	10.0	±80	26
1110409013	10.0	±08	24
1110409018	15.0	±80	24

CABLE LABEL DETAIL



YDDDLSSSS

Y = YEAR, THE LAST DIGIT OF THE YEAR

DDD = DAY OF THE YEAR

L = LOCATION (1-US, 2-MEXICO, 3-CHINA)

SSSS = SERIAL NUMBER (0001-9999)

X.XM = LENGTH AS SHOWN IN P/N TABLE

XXAWG = AWG SIZE

SEE REVISION TABLE ECN NO. 026205-2009 DRAWN BY: JENNY GRAVE 2010/10/09 CHECKED BY: JENNY GRAVE 2010/10/09 APPROVED BY: JENNY GRAVE 2010/10/09 DATE: 2010/10/09	QUALITY SYMBOLS	GENERAL TOLERANCES (UNLESS SPECIFIED)	DIMENSION STYLE	SCALE	DESIGN UNITS	THIRD ANGLE PROJECTION
	∇=0 ∇=0 ∇=0	mm INCH 4 PLACES ±--- ±--- 3 PLACES ±--- ±--- 2 PLACES ±0.13 ±--- 1 PLACE ±0.25 ±--- 0 PLACE ± ±	MM ONLY DRAWN BY: BICHEN06_USY 2010/04/09 CHECKED BY: DATE APPROVED BY: KLOYD 2010/04/09 DATE APPROVED BY: RMAHMOOD 2010/04/12 DATE	1:1	METRIC	THIRD ANGLE PROJECTION QSFP+ COPPER PATCH CABLE ASSEMBLY
	ANGULAR ±--- DRAFT WHERE APPLICABLE MUST REMAIN WITHIN DIMENSIONS	SEE P/N TABLE	WATERMARK NO.	DOCUMENT NO.	SHEET NO.	
				SD-111040-0001	3 OF 3	