

Excellent Integrated System Limited

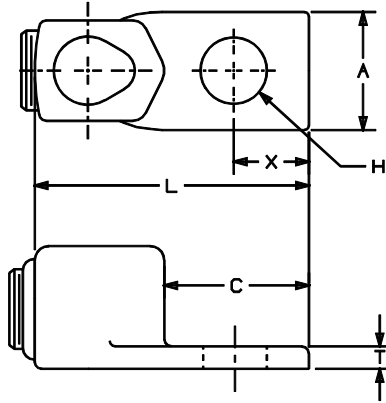
Stocking Distributor

Click to view price, real time Inventory, Delivery & Lifecycle Information:

[Panduit](#)
[HLA13-1-90-5](#)

For any questions, you can email us directly:
sales@integrated-circuit.com

THIS COPY IS PROVIDED ON A RESTRICTED BASIS AND IS NOT TO BE USED IN ANY WAY DETRIMENTAL TO THE INTERESTS OF PANDUIT CORP.



NOTES:

1. UL LISTED.
2. FOR COPPER WIRE ONLY.
3. IF HEX KEY IS NOT GIVEN, FLAT HEAD SCREW IS USED.
4. MADE IN THE USA.
5. SADDLE/PLATE PROVIDES UNIFORM CLAMPING FORCE WITHOUT DISTORTING CABLE SHAPE.



CATALOG NUMBER	CONDUCTOR RANGE	APPROXIMATE DIMENSIONS						WRENCH SIZE	TORQUE VALUE IN-LBS
		A	C	H	L	X	T		
HLA4-1-90-X	8 SOLID-4 STR.	.56	.63	.28	1.63	.31	.19	SCREW DRIVER SLOT	35
HLA8-1-90-X	4 SOLID-1 STR.	.75	.69	.28	1.50	.34	.22	7/16	100
HLA13-1-90-5	1 STR.-2/0 STR.	.81	.88	.44	2.38	.44	.22	9/16	250
HLA21-1-90-5	2/0 STR.-4/0 STR.	1.00	1.00	.44	2.69	.50	.25	9/16	250

C41193_01

							PANDUIT CORP. TINLEY PARK, ILLINOIS	
01	10/98	WB		ADDED NOTE 5			ONE BOLT HOLE 90° UPRIGHT PREMIUM LUG TYPE HLA CUSTOMER DRAWING	
00	10/96	TM	WB	RELEASED			05216	LA RM
REV	DATE	BY	CHK	DESCRIPTION	ECN #	APP	PM	DRAWN BY: EJD, CHK'D: WJB, SCALE: NONE, DRAWING NO.: C41193