

## Excellent Integrated System Limited

Stocking Distributor

Click to view price, real time Inventory, Delivery & Lifecycle Information:

[Panduit](#)

[LCMB185-10-X](#)

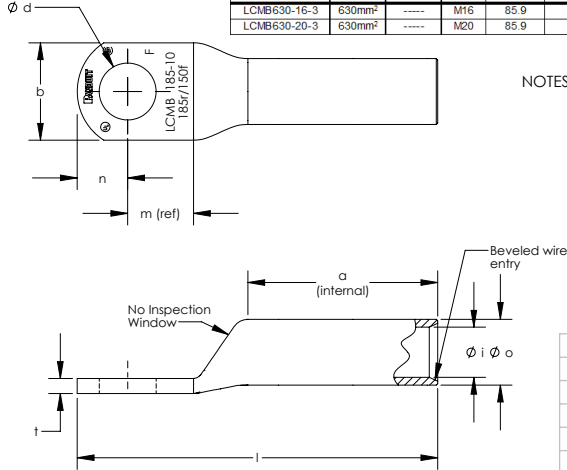
For any questions, you can email us directly:

[sales@integrated-circuit.com](mailto:sales@integrated-circuit.com)

THIS COPY IS PROVIDED ON A RESTRICTED BASIS AND IS NOT TO BE USED IN ANY WAY DETRIMENTAL TO THE INTERESTS OF PANDUIT CORP.

ALL DIMENSIONS ARE IN mm

Part Number	Class 2r Wire Size	Class 5f Wire Size	Stud Size	Wire Strip Length	Panduit Die Index No. For Class 2r Wire Circumferential Dies	Panduit Die Index No. For Class 5f & 6f Wire Circumferential Dies	Panduit Die Index No. For Class 5f & 6f Wire Nest/indenter Dies	l ± 2.76	o ± 50	i ± 50	a ± 2.25	m (ref)	n ± 2.25	d ± 50	b ± 2.25	t
LCMB185-10-X	185mm <sup>2</sup>	150mm <sup>2</sup>	M10	57.9	P76	-----	P76/4	100.6	23.00	18.60	56.3	16.5	17.5	11.00	33.5	4.55 ± 50
LCMB185-12-X	185mm <sup>2</sup>	150mm <sup>2</sup>	M12	57.9	P76	-----	P76/4	100.6	23.00	18.60	56.3	16.5	17.5	14.00	33.5	4.55 ± 50
LCMB185-16-X	185mm <sup>2</sup>	150mm <sup>2</sup>	M16	57.9	P76	-----	P76/4	100.6	23.00	18.60	56.3	16.5	17.5	18.00	33.5	4.40 ± 50
LCMB185-20-X	185mm <sup>2</sup>	150mm <sup>2</sup>	M20	57.9	P76	-----	P76/4	105.1	23.00	18.60	56.3	21.0	17.5	22.00	33.5	4.40 ± 50
LCMB240-10-6	240mm <sup>2</sup>	185mm <sup>2</sup>	M10	65.1	P87	-----	P87/4	115.0	26.00	20.80	63.5	21.0	19.5	11.00	37.5	5.30 ± 50
LCMB240-12-6	240mm <sup>2</sup>	185mm <sup>2</sup>	M12	65.1	P87	-----	P87/4	115.0	26.00	20.80	63.5	21.0	19.5	14.00	37.5	5.30 ± 50
LCMB240-16-6	240mm <sup>2</sup>	185mm <sup>2</sup>	M16	65.1	P87	-----	P87/4	115.0	26.00	20.80	63.5	21.0	19.5	18.00	37.5	5.30 ± 50
LCMB240-20-6	240mm <sup>2</sup>	185mm <sup>2</sup>	M20	65.1	P87	-----	P87/4	115.0	26.00	20.80	63.5	21.0	19.5	22.00	37.5	5.20 ± 50
LCMB300-10-6	300mm <sup>2</sup>	240mm <sup>2</sup>	M10	70.0	P94	-----	P106/6	122.6	29.00	23.50	68.4	22.0	20.0	11.00	42.5	5.40 ± 55
LCMB300-12-6	300mm <sup>2</sup>	240mm <sup>2</sup>	M12	70.0	P94	-----	P106/6	122.6	29.00	23.50	68.4	22.0	20.0	14.00	42.5	5.40 ± 55
LCMB300-16-6	300mm <sup>2</sup>	240mm <sup>2</sup>	M16	70.0	P94	-----	P106/6	122.6	29.00	23.50	68.4	22.0	20.0	18.00	42.5	5.40 ± 55
LCMB300-20-6	300mm <sup>2</sup>	240mm <sup>2</sup>	M20	70.0	P94	-----	P106/6	122.6	29.00	23.50	68.4	22.0	20.0	22.00	42.5	5.30 ± 55
LCMBX300-10-6	-----	300mm <sup>2</sup>	M10	74.6	-----	-----	P32/6	135.2	33.00	26.20	73.0	26.5	23.5	11.00	48.0	6.70 ± 55
LCMBX300-12-6	-----	300mm <sup>2</sup>	M12	74.6	-----	-----	P32/6	135.2	33.00	26.20	73.0	26.5	23.5	14.00	48.0	6.70 ± 55
LCMBX300-16-6	-----	300mm <sup>2</sup>	M16	74.6	-----	-----	P32/6	135.2	33.00	26.20	73.0	26.5	23.5	18.00	48.0	6.70 ± 55
LCMBX300-20-6	-----	300mm <sup>2</sup>	M20	74.6	-----	-----	P32/6	135.2	33.00	26.20	73.0	26.5	23.5	22.00	48.0	6.70 ± 55
LCMB400-12-6	400mm <sup>2</sup>	-----	M12	66.8	P106	-----	-----	127.4	34.50	27.00	65.2	26.5	23.5	14.00	49.5	7.50 ± 55
LCMB400-16-6	400mm <sup>2</sup>	-----	M16	66.8	P106	-----	-----	127.4	34.50	27.00	65.2	26.5	23.5	18.00	49.5	7.50 ± 55
LCMB400-20-6	400mm <sup>2</sup>	-----	M20	66.8	P106	-----	-----	127.4	34.50	27.00	65.2	26.5	23.5	22.00	49.5	7.50 ± 55
LCMB500-12-3	500mm <sup>2</sup>	-----	M12	77.8	P125	-----	-----	149.7	40.00	31.00	76.2	28.5	25.5	14.00	57.5	8.90 ± 55
LCMB500-16-3	500mm <sup>2</sup>	-----	M16	77.8	P125	-----	-----	149.7	40.00	31.00	76.2	28.5	25.5	18.00	57.5	8.90 ± 55
LCMB500-20-3	500mm <sup>2</sup>	-----	M20	77.8	P125	-----	-----	149.7	40.00	31.00	76.2	28.5	25.5	22.00	57.5	8.90 ± 55
LCMB630-16-3	630mm <sup>2</sup>	-----	M16	85.9	P125	-----	-----	159.1	44.00	34.50	84.3	28.5	27.5	18.00	63.0	9.40 ± 65
LCMB630-20-3	630mm <sup>2</sup>	-----	M20	85.9	P125	-----	-----	159.1	44.00	34.50	84.3	28.5	27.5	22.00	63.0	9.40 ± 65



- NOTES:
- Material: High conductivity seamless copper tube.
  - Plating: Parts are annealed and tin plated.
  - Wire Type: Class 2r, 5f & 6f Stranded Copper per DIN VDE 0295, IEC 60228 and HD 383.
  - UL Listed Wire Connector: Yes, for applications up to 35kV. Consult cable manufacturer for voltage stress relief instructions with applications greater than 2000 volts.
  - UL Temperature Rating: 90° C
  - C.S.A. Certified Wire Connector: Yes
  - Parts are CE and tested per EN 61238-1:2003/IEC 61238-1:2003 Class B, with Class 2r wire 185mm<sup>2</sup> - 240mm<sup>2</sup>.



LISTED Wire Connector

CERTIFIED

REV	DATE	BY	CHK	APR	DESCRIPTION	ECN
00	7/13	JHNU	TLCO	RGB	DRAWING RELEASED	12J0368J-JC

TITLE		METRIC LUGS - LCMB ONE HOLE SERIES 185-630mm LONG BARREL	
CUSTOMER DRAWING		ITEM REVISION NAME	
12J0368J-00		12J0368J-00.SLDDRW	
UNLESS OTHERWISE SPECIFIED, DIMENSIONAL TOLERANCES ARE: IN [mm]		DRAWN BY	
X ±		JHNU	
XX ±		DATE	
ANGLES ±		7/13	
THIRD ANGLE PROJECTION		CHK	
DRAWING NUMBER		TLCO	
12J0368J-JC		SCALE	
SHEET 1 OF 1		NONE	