

Excellent Integrated System Limited

Stocking Distributor

Click to view price, real time Inventory, Delivery & Lifecycle Information:

[FCI](#)

[51731-025LF](#)

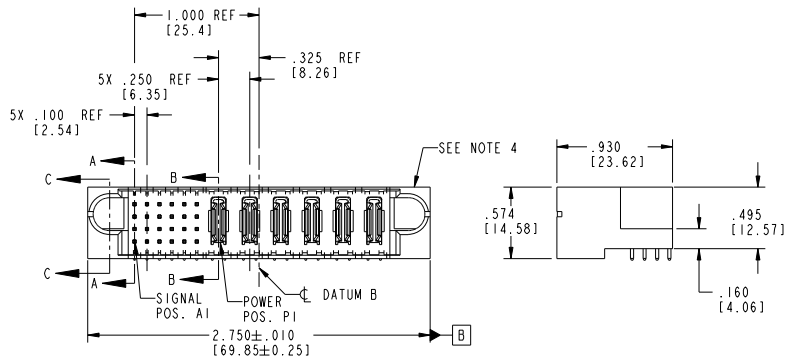
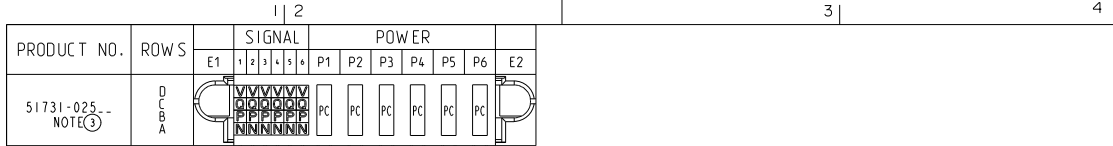
For any questions, you can email us directly:

sales@integrated-circuit.com

Tous droits strictement réservés. Reproduction ou communication de ces lignes interdit sans aucune forme que ce soit sans autorisation écrite du propriétaire. Propriété de c FCI. Droits de reproduction FCI.



All rights strictly reserved. Reproduction or issue in any form without written authority from the proprietor. Property of FCI. Copyright FCI.



CODE	DIM "M" MATING LENGTH	CONTACT TYPE
N	.270 [6.86]	SIGNAL
P	.270 [6.86]	SIGNAL
O	.270 [6.86]	SIGNAL
V	.270 [6.86]	SIGNAL
PC	N/A [N/A]	POWER

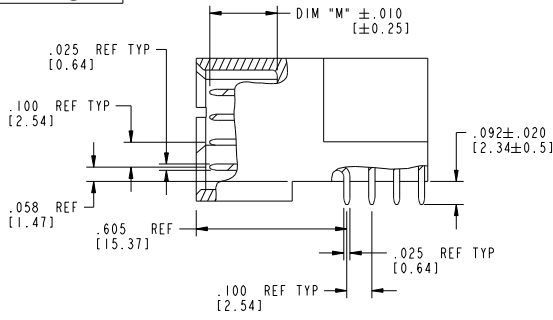
mat'l code				SEE NOTE 2		tolerances unless otherwise specified		CUSTOMER	
ltr	ecm no.	dr	date	linear	XX±.01/0.XX±0.3	projection		www.fciconnect.com	
A	V04-0924	TAB	09/14/04	linear	XX±.005/0.XX±0.13	COPY		title 24S + 6P	
B	DG05-0076	SW	04/10/05	linear	XX±.002/0.XX±0.051	INCH/MM		RIGHT ANGLE SOLDER HEADER	
C	DG05-0531	GuoJM	12/15/05	angles	0±	scale 1:1		product family PwrBlade code 213	
D	DG08-0253	SH	09/13/08	dr	I. BRUNGARD 09/04/04	size		dwg no 51731-025 sheet 1 of 4	
				enrg	M. GRAY 09/14/04	A			
				chr	M. GRAY 09/14/04				
				oppd	M. GRAY 09/14/04				
sheet index	revision sheet	D	D	D	D			code code 22526	
		1	2	3	4				

Tous droits strictement réservés. Reproduction ou communication, en des lieux interdite sans aucune forme que ce soit sans autorisation écrite du propriétaire. Propriété de c FCI. Droits de reproduction FCI.

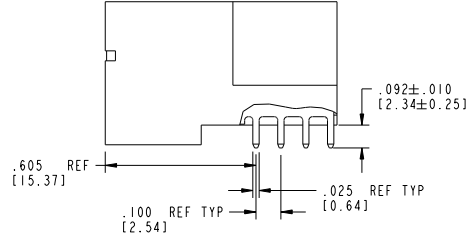


All rights strictly reserved. Reproduction or issue in any form wherever is not permitted without written authority from the proprietor. Property of FCI. Copyright FCI.

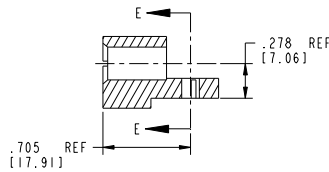
PRODUCT NUMBER
51731-025-
NOTE(3)



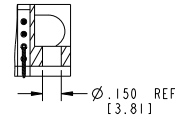
BROKEN-OUT SECTION A-A
SCALE 2:1



BROKEN-OUT SECTION B-B
SCALE 2:1



SECTION C-C



PARTIAL SECTION E-E

mat'l code		SEE NOTE 2		tolerances unless otherwise specified		CUSTOMER		FCI		www.fciconnect.com	
ltr	ecm no.	dr	date	linear	XX±.01/0.XX+0.3	COPY		projection		title	
D				linear	XXX±.005/0.XX+0.13	COPY		A		24S + 6P	
				angles	XXX±.0020/0.XX+0.051	INCH/MM		A		RIGHT ANGLE SOLDER HEADER	
				dr	T. BRUNGARD 09/04/04	scale		A		product family	
				enr	M. GRAY 09/14/04	1:1		A		PwrBlade	
				chr	M. GRAY 09/14/04			A		code	
				appd	M. GRAY 09/14/04			A		213	
sheet index	revision sheet							A		sheet 2 of 4	

1 | 2

Pro/E

3 |

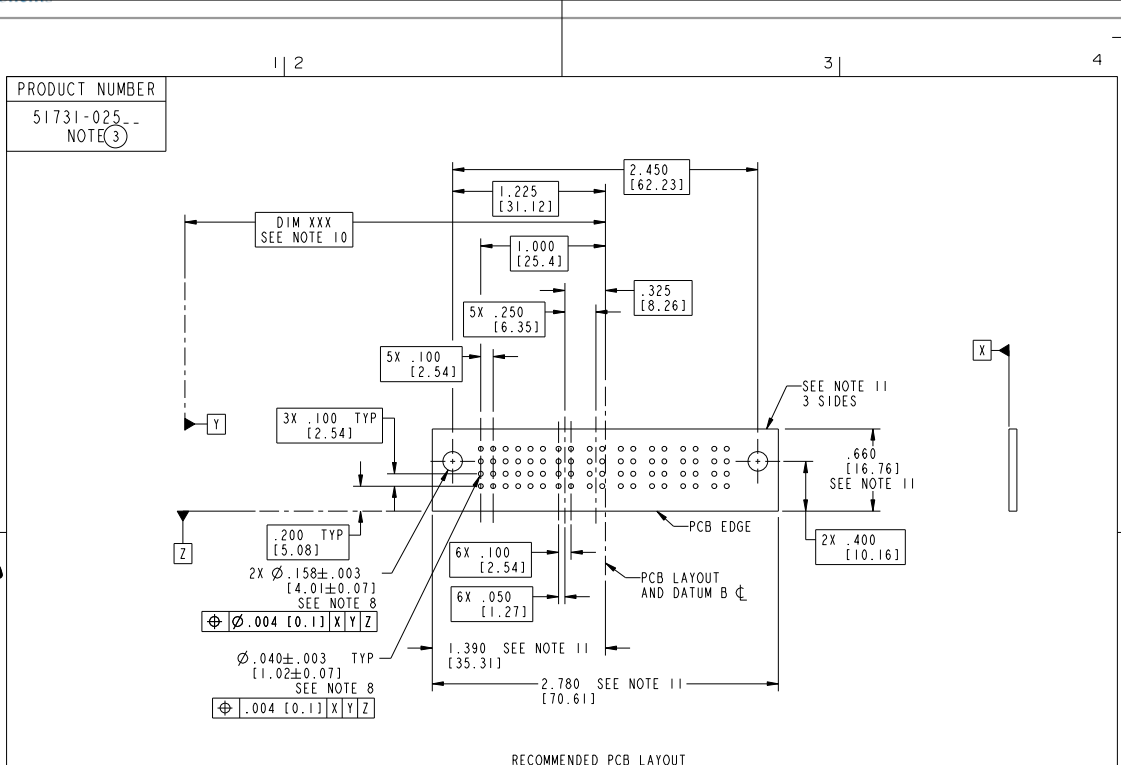
cage code 22526

4

Tous droits strictement réservés. Reproduction ou communication de ces lignes infidèle sans aucune forme que ce soit sans autorisation écrite du propriétaire. Propriété de c FCI. Droits de reproduction FCI.



All rights strictly reserved. Reproduction or issue in any form without written authority from the proprietor. Property of FCI. Copyright FCI.



RECOMMENDED PCB LAYOUT

mat'l code		SEE NOTE 2	tolerances unless otherwise specified	CUSTOMER		www.fciconnect.com
lfr	ecn no.	dr	date	linear	projection	
D				linear	COPY	24S + 6P
				angles	INCH/MM	RIGHT ANGLE SOLDER HEADER
				dr	scale	product family
				enrg	1:1	PwrBlade
				chr		size
				oppd		dwg no
sheet index	revision sheet					51731-025
						code
						213
						sheet
						3 of 4

Pro/E 3 cage code 22526 4

Tous droits strictement réservés. Reproduction ou communication de ces lignes interdite sans aucune forme que ce soit sans autorisation écrite du propriétaire. Propriété de FCI. Droits de reproduction FCI.



All rights strictly reserved. Reproduction or issue in any form whatever is not permitted without written authority from the proprietor. Property of FCI. Copyright FCI.

PRODUCT NUMBER
51731-025-
NOTE(3)

NOTES:

1. DIMENSIONS AND TOLERANCES ARE IN ACCORDANCE WITH ASME Y14.5M, 1994 UNLESS OTHERWISE SPECIFIED.

CONNECTOR NOTES:

2. HOUSING MATERIAL: UL 94 V-0 GLASS FILLED HIGH-TEMP THERMOPLASTIC
POWER CONTACT MATERIAL: COPPER ALLOY
SIGNAL PIN MATERIAL: COPPER ALLOY

3. PLATING:

SEE ITEM 1 & 2 IN PRINT 10064183 FOR PLATING SPEC OF 51731-025 AND 51731-025LF RESPECTIVELY

4. MANUFACTURER'S NAME, P/N, AND DATE CODE TO APPEAR ON THIS SURFACE.

5. PRODUCT SPECIFICATION GS-12-149.
APPLICATION SPECIFICATION BUS-20-067.

6. PACKAGED IN TRAYS.

PCB NOTES:

7. ALL HOLE DIAMETERS ARE FINISHED HOLE SIZE.

8. MOUNTING HOLES, WHERE APPLICABLE, ARE UNPLATED.

9. $\varnothing .0453 \pm .0010$ [1.151 ± 0.025] DRILLED HOLES PLATED WITH .0003 [0.008] MIN SnPb OVER .001 [0.03] TO .003 [0.08] Cu PLATING TO ACHIEVE $\varnothing .040 \pm .003$ [1.02 ± .07] HOLE.

10. "DIM XXX" TO BE DETERMINED BY THE CUSTOMER.

11. CONNECTOR KEEP-OUT ZONE.

12: A Δ SYMBOL WILL BE NEXT TO ANY DIMENSION, VIEW, OR NOTE WHICH HAS BEEN MODIFIED WITH CURRENT DRAWING VERSION.

mat'l code		SEE NOTE 2	tolerances unless otherwise specified	CUSTOMER	FCI www.fciconnect.com	
ltr	ecm no.	dr	date	linear	projection	title
D				$XX \pm .01/0$ $YY \pm 0.13$		24S + 6P
				angles	$XXX \pm .002/0$ $YYY \pm 0.051$	RIGHT ANGLE SOLDER HEADER
				dr	$Z \pm .00$	product family
				enr	T. BRUNGARD 09/04/04	PwrBlade
				chr	M. GRAY 09/14/04	code
				oppd	M. GRAY 09/14/04	213
sheet index	revision sheet				INCH/MM	size
					scale	dwg no
					1:1	51731-025
						sheet
						4 of 4

cage code 22526