

Excellent Integrated System Limited

Stocking Distributor

Click to view price, real time Inventory, Delivery & Lifecycle Information:

[FCI](#)

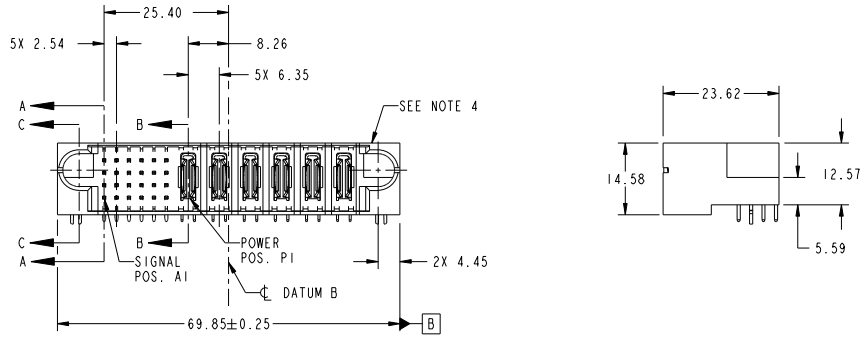
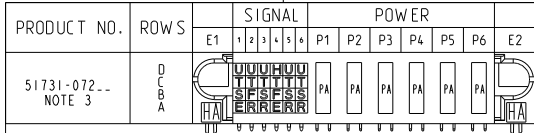
[51731-072LF](#)

For any questions, you can email us directly:

sales@integrated-circuit.com

Tous droits strictement réservés. Reproduction ou communication à des tiers interdite sous quelque forme que ce soit sans autorisation écrite du propriétaire. Propriété de FCI. Droits de reproduction FCI.

All rights strictly reserved. Reproduction or issue to third parties in any form whatever is not permitted without written authority from the proprietor. Property of FCI. Copyright FCI.



CODE	DIM "M" MATING LENGTH	CONTACT TYPE
U	[6.86]	SIGNAL
T	[6.86]	SIGNAL
S	[6.86]	SIGNAL
R	[6.86]	SIGNAL
PA	[N/A]	POWER
HA	[N/A]	HOLD-DOWN
E	[5.59]	SIGNAL
F	[5.59]	SIGNAL
H	[5.59]	SIGNAL

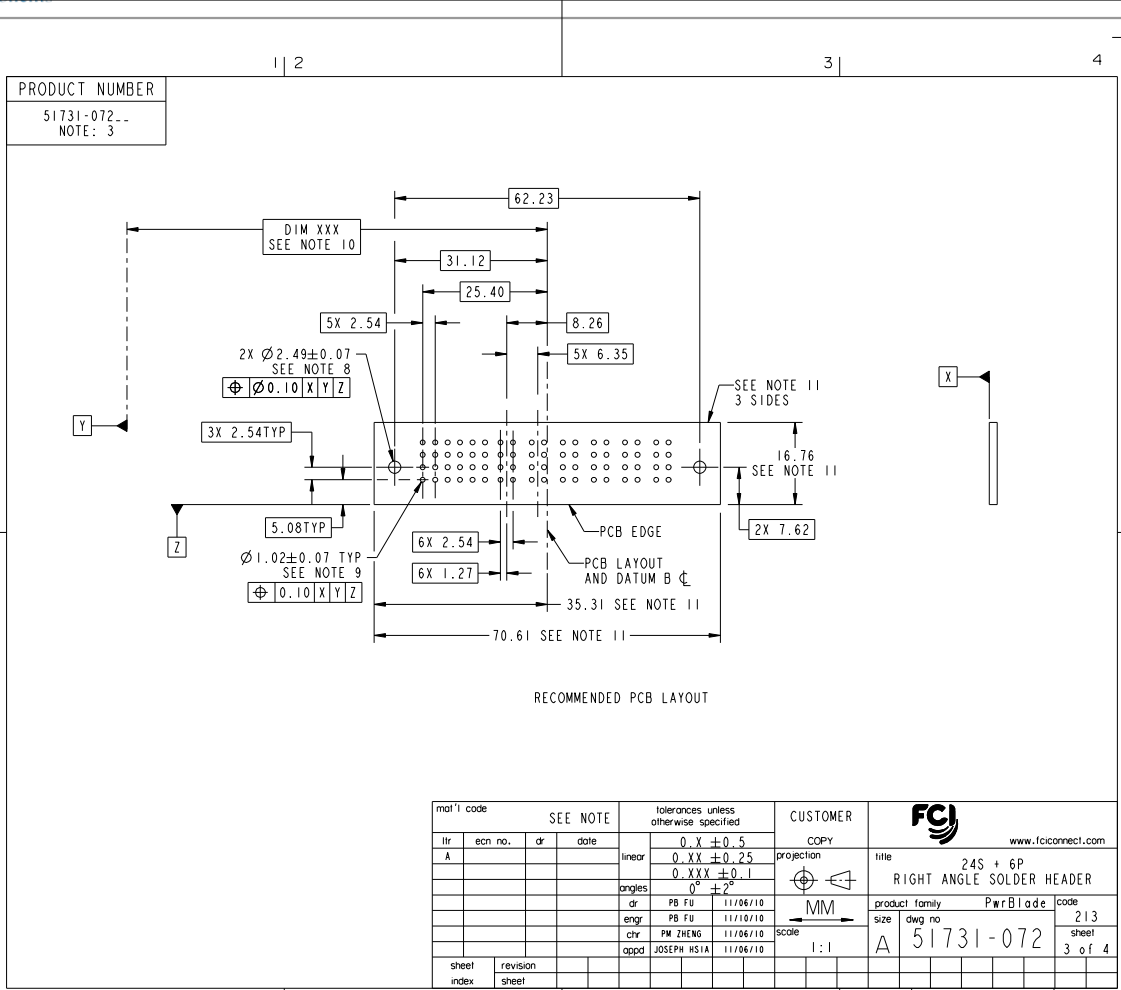
mat'l code				SEE NOTE		tolerances unless otherwise specified		CUSTOMER	
lfr	ecm no.	dr	date			0.X ±0.5		COPY	www.fciconnect.com
A	DG10-0384	FB	11/10/10	linear		0.XX ±0.25		projection	title
						0.XXX ±0.1		MM	24S + 6P
				angles		0° ±2°		scale	RIGHT ANGLE SOLDER HEADER
				dr	PB FU	11/06/10		product family	PwrBlade
				enrg	PB FU	11/10/10		size	code
				chr	PW ZHENG	11/06/10		dwg no	213
				oppd	JOSEPH HSIA	11/06/10		51731-072	sheet
sheet index	revision sheet	A	A	A	A			1 of 4	
		1	2	3	4				

cage code 22526

Tous droits strictement réservés. Reproduction ou communication à des tiers interdite sous quelque forme que ce soit sans autorisation écrite du propriétaire. Propriété de FCI. Droits de reproduction FCI.



All rights strictly reserved. Reproduction or issue to third parties in any form whatever is not permitted without written authority from the proprietor. Property of FCI. Copyright FCI.



RECOMMENDED PCB LAYOUT

mat'l code		SEE NOTE	tolerances unless otherwise specified	CUSTOMER	
ltr	ecm no.	dr	date	0.X ±0.5	COPY
A				0.XX ±0.25	www.fciconnect.com
				0.XXX ±0.1	title
				0° ±2°	24S + 6P
				dr PB FU 11/06/10	RIGHT ANGLE SOLDER HEADER
				enr PB FU 11/10/10	product family PwrBlade
				chr PW ZHENG 11/06/10	size
				oppd JOSEPH HSIA 11/06/10	dwg no
sheet index	revision sheet			scale	A
				1:1	51731-072
					code
					213
					sheet
					3 of 4
					code
					22526

Pro/E

cage code 22526

Tous droits strictement réservés. Reproduction ou communication à des tiers interdite sous quelque forme que ce soit sans autorisation écrite du propriétaire. Propriété de FCI. Droits de reproduction FCI.

All rights strictly reserved. Reproduction or issue to third parties in any form whatever is not permitted without written authority from the proprietor. Property of FCI. Copyright FCI.

PRODUCT NUMBER
 51731-072-
 NOTE: 3

NOTES:

1. DIMENSIONS AND TOLERANCES ARE IN ACCORDANCE WITH ASME Y14.5M, 1994 UNLESS OTHERWISE SPECIFIED.

CONNECTOR NOTES:

- 2. HOUSING MATERIAL: UL 94 V-0 GLASS FILLED HIGH-TEMP THERMOPLASTIC
 POWER CONTACT MATERIAL: COPPER ALLOY
 SIGNAL PIN MATERIAL: COPPER ALLOY
 - 3. SEE ITEM 1 & 2 IN PRINT 10064183 FOR PLATING SPEC OF 51731-072 AND 51731-072LF RESPECTIVELY.
 - 4. MANUFACTURER'S NAME, DATE CODE AND OPTIONAL P/N TO APPEAR ON THIS SURFACE. THE P/N CAN BE OMITTED IF THERE IS NOT ENOUGH SPACE ON THIS SURFACE.
 - 5. PRODUCT SPECIFICATION GS-12-149.
 APPLICATION SPECIFICATION BUS-20-067.
 - 6. PACKAGED IN TRAYS.
- PCB NOTES:
- 7. ALL HOLE DIAMETERS ARE FINISHED HOLE SIZE.
 - 8. MOUNTING HOLES, WHERE APPLICABLE, ARE UNPLATED.
 - 9. $\varnothing 1.151 \pm 0.025$ DRILLED HOLES PLATED WITH
 0.008 MIN SnPb OR Sn OVER 0.03
 TO 0.08 Cu PLATING TO ACHIEVE
 $\varnothing 1.02 \pm 0.07$ HOLE.
 - 10. "DIM XXX" TO BE DETERMINED BY THE CUSTOMER.
 - 11. CONNECTOR KEEP-OUT ZONE.

mat'l code				SEE NOTE		tolerances unless otherwise specified		CUSTOMER	
ltr	ecm no.	dr	date	linear		0.X ± 0.5	COPY		
A						0.XX ± 0.25	projection	www.fciconnect.com	
				angles		0.XXX ± 0.1		title	
				dr	PB FU	11/06/10		24S + 6P	
				enrg	PB FU	11/10/10	scale	RIGHT ANGLE SOLDER HEADER	
				chr	PW ZHENG	11/06/10	1:1	product family	
				oppd	JOSEPH HSIA	11/06/10		PwrBlade	
sheet index	revision sheet							code	
								213	
								sheet	
								4 of 4	

Pro/E

cage code 22526