

## Excellent Integrated System Limited

Stocking Distributor

Click to view price, real time Inventory, Delivery & Lifecycle Information:

[FCI](#)

[51939-387LF](#)

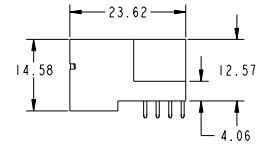
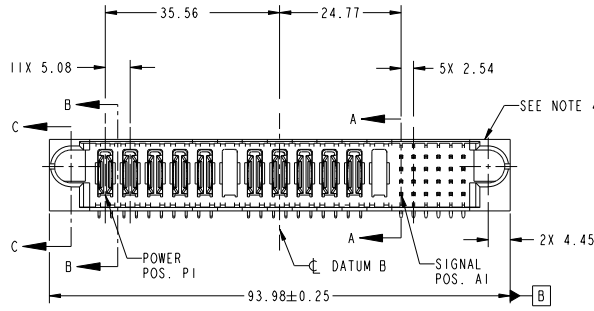
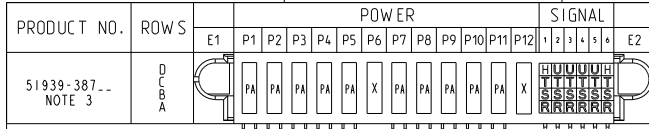
For any questions, you can email us directly:

[sales@integrated-circuit.com](mailto:sales@integrated-circuit.com)

Tous droits strictement réservés. Reproduction ou communication à des tiers interdite sous quelque forme que ce soit sans autorisation écrite du propriétaire. Propriété de FCI. Droits de reproduction FCI.



All rights strictly reserved. Reproduction or issue to third parties in any form whatever is not permitted without written authority from the proprietor. Property of FCI. Copyright FCI.



CODE	DIM "M" MATING LENGTH	CONTACT TYPE
T	[6.86]	SIGNAL
S	[6.86]	SIGNAL
R	[6.86]	SIGNAL
U	[6.86]	SIGNAL
PA	[N/A]	POWER
H	[5.59]	SIGNAL
X	OMITTED	OMITTED

mat'l code				SEE NOTE		tolerances unless otherwise specified	
ltr	ecm no.	dr	date			0.X ±0.5	
A	DG08-0300	JC	10/30/08	linear		0.XX ±0.25	
				angles		0° ±2°	
		dr			Jerome Chen	10/24/08	
		enr			Jerome Chen	10/24/08	
		chr			Gary Hsieh	10/24/08	
		oppd			Joseph Hsiao	10/24/08	
sheet index	revision sheet	A	A	A	A	A	
		1	2	3	4		

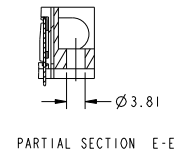
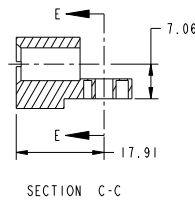
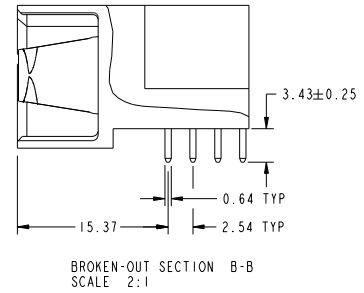
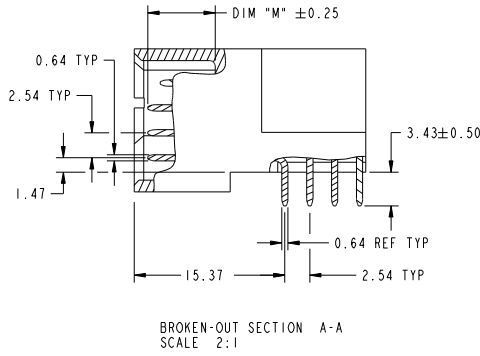
CUSTOMER		FCI	
COPY		www.fciconnect.com	
projection	title	12P + 24S	
MM	RIGHT ANGLE SOLDER HEADER	product family PwrBlade	
scale	size	dwg no	code
1:1	A	51939-387	213
			sheet 1 of 4

cage code 22526

Tous droits strictement réservés. Reproduction ou communication à des tiers interdite sous quelque forme que ce soit sans autorisation écrite du propriétaire. Propriété de FCI. Droits de reproduction FCI.

All rights strictly reserved. Reproduction or issue to third parties in any form whatever is not permitted without written authority from the proprietor. Property of FCI. Copyright FCI.

PRODUCT NUMBER  
51939-387...  
NOTE: 3

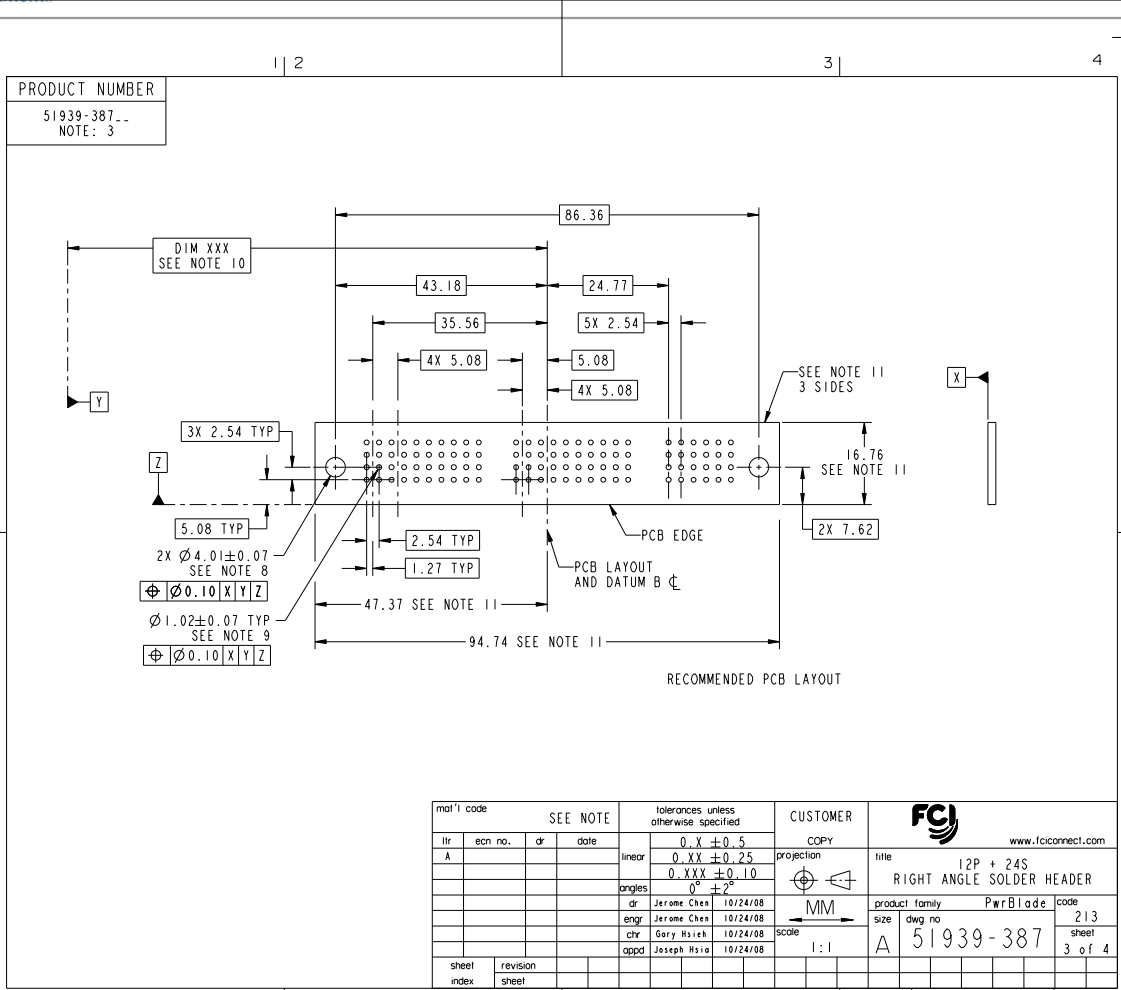


mat'l code		SEE NOTE		tolerances unless otherwise specified		CUSTOMER	
ltr	ecm no.	dr	date	linear	0.X ±0.5	COPY	www.fciconnect.com
A					0.XX ±0.25	projection	12P + 24S
				angles	0.XXX ±0.10	MM	RIGHT ANGLE SOLDER HEADER
				dr	0° ±2°	scale	product family PwrBlade code
				enr	Jerome Chen 10/24/08	1:1	size dwg no 213
				chr	Jerome Chen 10/24/08		51939-387 sheet
				oppd	Gary Hsieh 10/24/08		2 of 4
					Joseph Hsiao 10/24/08		
sheet index	revision sheet						cage code 22526

Tous droits strictement réservés. Reproduction ou communication à des tiers interdite sous quelque forme que ce soit sans autorisation écrite du propriétaire. Propriété de FCI. Droits de reproduction FCI.



All rights strictly reserved. Reproduction or issue to third parties in any form whatever is not permitted without written authority from the proprietor. Property of FCI. Copyright FCI.



mat'l code		SEE NOTE		tolerances unless otherwise specified		CUSTOMER	
ltr	ecm no.	dr	date	linear	0 . X ± 0 . 5	COPY	www.fciconnect.com
A					0 . XX ± 0 . 25	projection	
				angles	0 . XXX ± 0 . 10		title
					0° ± 2°	MM	12P + 24S
		dr	Jerome Chen	10/24/08		product family	PwrBlade
		engr	Jerome Chen	10/24/08		size	213
		chr	Gary Hsieh	10/24/08		dwg no	51939-387
		appd	Joseph Hsiao	10/24/08		scale	3 of 4
sheet index	revision sheet						

Pro/E 3 cage code 22526 4

Tous droits strictement réservés. Reproduction ou communication à des tiers interdite sous quelque forme que ce soit sans autorisation écrite du propriétaire. Propriété de E.FCI. Droits de reproduction FCI.

All rights strictly reserved. Reproduction or issue to third parties in any form whatever is not permitted without written authority from the proprietor. Property of FCI. Copyright FCI.

**PRODUCT NUMBER**  
51939-387\_  
NOTE: 3

**NOTES:**

1. DIMENSIONS AND TOLERANCES ARE IN ACCORDANCE WITH ASME Y14.5M, 1994 UNLESS OTHERWISE SPECIFIED.

**CONNECTOR NOTES:**

- 2. HOUSING MATERIAL: UL 94 V-0 GLASS FILLED HIGH-TEMP THERMOPLASTIC  
POWER CONTACT MATERIAL: COPPER ALLOY  
SIGNAL PIN MATERIAL: COPPER ALLOY
  - 3. SEE ITEM 1 & 2 IN PRINT 10064183 FOR PLATING SPEC OF 51939-387 AND 51939-387LF RESPECTIVELY
  - 4. MANUFACTURER'S NAME, P/N, AND DATE CODE TO APPEAR ON THIS SURFACE.
  - 5. PRODUCT SPECIFICATION GS-12-149.  
APPLICATION SPECIFICATION BUS-20-067.
  - 6. PACKAGED IN TRAYS.
- PCB NOTES:**
- 7. ALL HOLE DIAMETERS ARE FINISHED HOLE SIZE.
  - 8. MOUNTING HOLES, WHERE APPLICABLE, ARE UNPLATED.
  - 9.  $\varnothing 1.151 \pm 0.025$  DRILLED HOLES PLATED WITH 0.008 MIN SnPb OR Sn OVER 0.03 TO 0.08 Cu PLATING TO ACHIEVE  $\varnothing 1.02 \pm 0.07$  HOLE.
  - 10. "DIM XXX" TO BE DETERMINED BY THE CUSTOMER.
  - 11. CONNECTOR KEEP-OUT ZONE.

SEE NOTE				tolerances unless otherwise specified		CUSTOMER	
ltr	ecm no.	dr	date	linear	angular	projection	title
A				$0.X \pm 0.5$		COPY	www.fciconnect.com
				$0.XX \pm 0.25$			12P + 24S RIGHT ANGLE SOLDER HEADER
				$0.XXX \pm 0.10$			
				$0^\circ \pm 2^\circ$			product family PwrBlade code 213
		dr	Jerome Chen	10/24/08		MM	size dwg no 51939-387 sheet 4 of 4
		engr	Jerome Chen	10/24/08		scale 1:1	
		chr	Gary Hsieh	10/24/08			
		appd	Joseph Hsiao	10/24/08			
sheet index	revision sheet						cage code 22526