

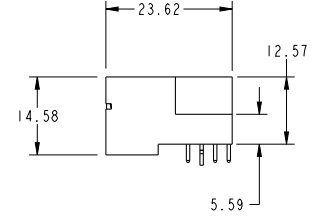
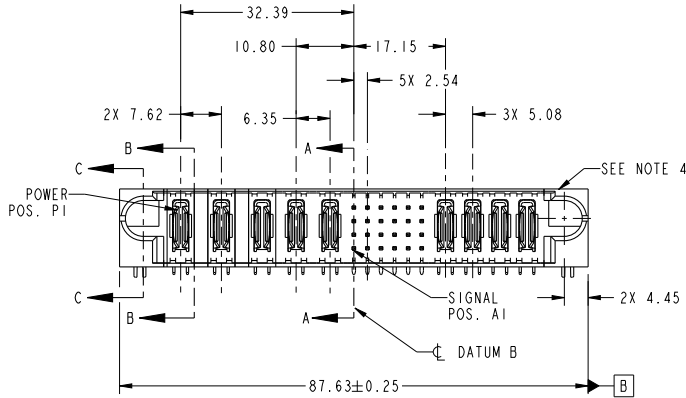
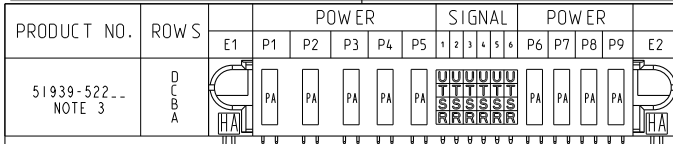
Excellent Integrated System Limited

Stocking Distributor

Click to view price, real time Inventory, Delivery & Lifecycle Information:

[FCI](#)
[51939-522LF](#)

For any questions, you can email us directly:
sales@integrated-circuit.com



CODE	DIM "M" MATING LENGTH	CONTACT TYPE
U	[6.86]	SIGNAL
T	[6.86]	SIGNAL
S	[6.86]	SIGNAL
R	[6.86]	SIGNAL
PA	[N/A]	POWER
HA	[N/A]	HOLD-DOWN

spec ref	*	dr	Anson Liu	2010/04/23	projection	MM	size	A4	scale	1:1
tolerance std	TOLERANCES UNLESS OTHERWISE SPECIFIED	eng	wcadmin	2012/08/07		product family	PwrBlade	ecn no	rel level	Released
		chr	-							
		appr	Pei-Ming Zheng	2012/08/07	3ACP + 2P + 24S + 4P		51939-522		rev	
surface	linear	0.X	±0.5		RIGHT ANGLE SOLDER HEADER		Product - Customer Drw		sheet 1 of 4	
		0.XX	±0.25		cat. no.		&model_name			
		0.XXX	±0.1		Product - Customer Drw		sheet 1 of 4			
	angular	0°	±2°	www.fci.com		Product - Customer Drw		sheet 1 of 4		

Print File - REV C - 2009-08-09

1

2

3

PDS: Rev :A

STATUS:Released

Printed: Aug 07, 2012



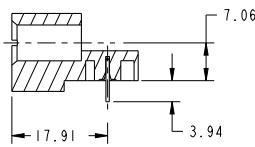
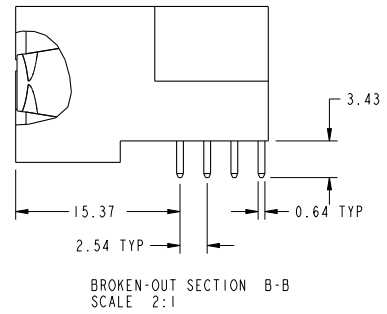
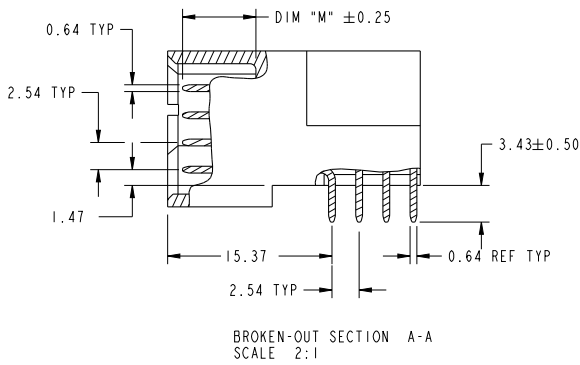
Copyright FCI.

A

B

C

D



SECTION C-C

spec ref	*			dr	Anson Liu	2010/04/23	projection	MM	size	A4	scale	1:1
tolerance std	TOLERANCES UNLESS OTHERWISE SPECIFIED			eng	wcadmin	2012/08/07			ecn no	-	rel level	Released
surface	linear	0.X	±0.5	chr	-	-			product family	PwrBlade	rev	A
		0.XX	±0.25	appr	Pei-Ming Zheng	2012/08/07			cat. no.	3ACP + 2P + 24S + 4P	model name	RIGHT ANGLE SOLDER HEADER
		0.XXX	±0.1			cat. no.	51939-522	Product - Customer Drw	sheet 2 of 4			
	angular	0°	±2°			cat. no.	Product - Customer Drw	STATUS:Released	Printed: Aug 07, 2012			

Prod File - REV C - 2009-08-09

1

2

3

PDS: Rev :A

STATUS:Released

Printed: Aug 07, 2012



Copyright FCI.

A

B

C

D

A

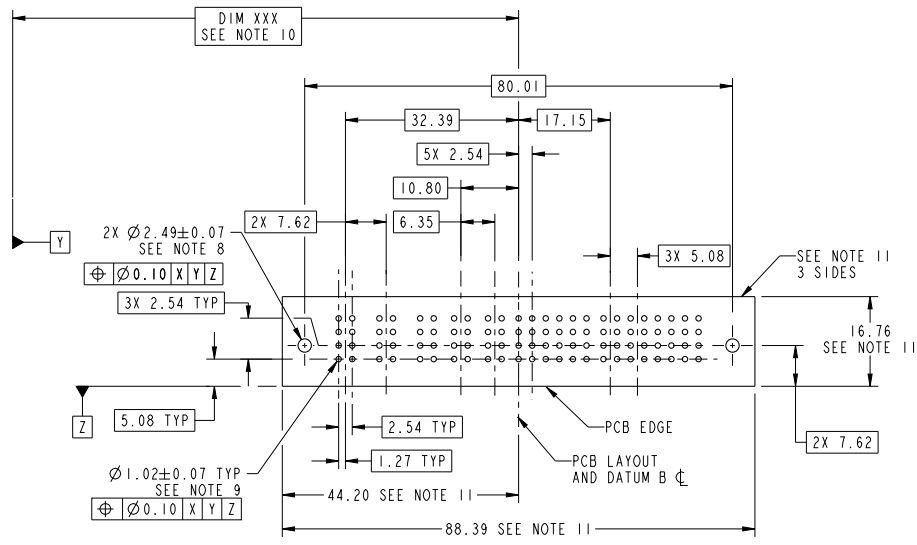
B

C

D



Copyright FCI.



RECOMMENDED PCB LAYOUT

spec ref	*	dr	Anson Liu	2010/04/23	projection	MM	size	A4	scale	1:1											
tolerance std	TOLERANCES UNLESS OTHERWISE SPECIFIED	eng	wcadmin	2012/08/07			ecn no	-	rel level	Released											
surface	<table border="1"> <tr> <td>linear</td> <td>0.X</td> <td>±0.5</td> </tr> <tr> <td></td> <td>0.XX</td> <td>±0.25</td> </tr> <tr> <td></td> <td>0.XXX</td> <td>±0.1</td> </tr> <tr> <td>angular</td> <td>0°</td> <td>±2°</td> </tr> </table>	linear	0.X	±0.5				0.XX	±0.25		0.XXX	±0.1	angular	0°	±2°	chr	-	product family	PwrBlade	cat. no.	51939-522
linear	0.X	±0.5																			
	0.XX	±0.25																			
	0.XXX	±0.1																			
angular	0°	±2°																			
		appr	Pei-Ming Zheng	2012/08/07			<table border="1"> <tr> <td>title</td> <td>3ACP + 2P + 24S + 4P</td> <td>dwg no</td> <td>51939-522</td> </tr> <tr> <td></td> <td>RIGHT ANGLE SOLDER HEADER</td> <td></td> <td></td> </tr> </table>		title	3ACP + 2P + 24S + 4P	dwg no	51939-522		RIGHT ANGLE SOLDER HEADER			Product - Customer Drw		sheet 3 of 4		
title	3ACP + 2P + 24S + 4P	dwg no	51939-522																		
	RIGHT ANGLE SOLDER HEADER																				

Print File - REV C - 2009-08-09

1

2

3

PDS: Rev :A

STATUS:Released

Printed: Aug 07, 2012

NOTES:

1. DIMENSIONS AND TOLERANCES ARE IN ACCORDANCE WITH ASME Y14.5M, 1994 UNLESS OTHERWISE SPECIFIED.

CONNECTOR NOTES:

- 2. HOUSING MATERIAL: UL 94 V-0 GLASS FILLED HIGH-TEMP THERMOPLASTIC
POWER CONTACT MATERIAL: COPPER ALLOY
SIGNAL PIN MATERIAL: COPPER ALLOY
- 3. SEE ITEM 1 & 2 IN PRINT 10064183 FOR PLATING SPEC OF 51939-522 AND 51939-522LF RESPECTIVELY.
- 4. MANUFACTURER'S NAME, DATE CODE AND OPTIONAL P/N TO APPEAR ON THIS SURFACE. THE P/N CAN BE OMITTED IF THERE IS NOT ENOUGH SPACE ON THIS SURFACE.
- 5. PRODUCT SPECIFICATION GS-12-149.
APPLICATION SPECIFICATION BUS-20-067.
- 6. PACKAGED IN TRAYS.

PCB NOTES:

- 7. ALL HOLE DIAMETERS ARE FINISHED HOLE SIZE.
- 8. MOUNTING HOLES, WHERE APPLICABLE, ARE UNPLATED.
- 9. $\varnothing 1.151 \pm 0.025$ DRILLED HOLES PLATED WITH 0.008 MIN SnPb OR Sn OVER 0.03 TO 0.08 Cu PLATING TO ACHIEVE $\varnothing 1.02 \pm 0.07$ HOLE.
- 10. "DIM XXX" TO BE DETERMINED BY THE CUSTOMER.
- 11. CONNECTOR KEEP-OUT ZONE.

spec ref	*	dr	Anson Liu	2010/04/23	projection	MM	size	A4	scale	1:1	
tolerance std	TOLERANCES UNLESS OTHERWISE SPECIFIED	eng	wcadmin	2012/08/07		← →	ecn no	-	rel level		Released
		chr	-	-			product family	PwrBlade			
surface	linear	appr	Pei-Ming Zheng	2012/08/07	title		3ACP + 2P + 24S + 4P	dwg no	51939-522	rev	A
	angular	www.fci.com		cat. no.	&model_name	Product - Customer Drw		sheet 4 of 4			

Print File - REV C - 2009-08-09

PDS: Rev :A

STATUS:Released

Printed: Aug 07, 2012



Copyright FCI.