

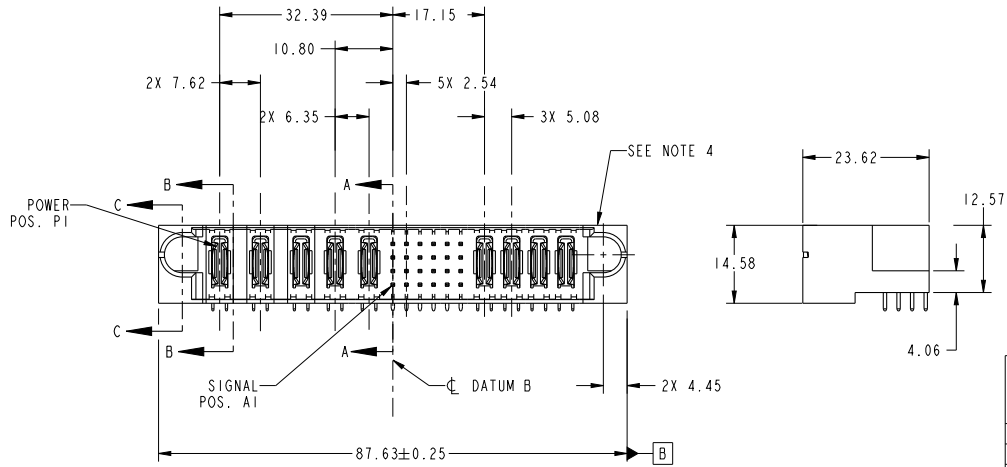
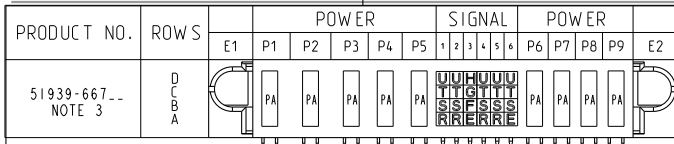
Excellent Integrated System Limited

Stocking Distributor

Click to view price, real time Inventory, Delivery & Lifecycle Information:

[FCI](#)
[51939-667LF](#)

For any questions, you can email us directly:
sales@integrated-circuit.com



CODE	DIM "M" MATING LENGTH	CONTACT TYPE
U	[6.86]	SIGNAL
T	[6.86]	SIGNAL
S	[6.86]	SIGNAL
R	[6.86]	SIGNAL
H	[5.59]	SIGNAL
G	[5.59]	SIGNAL
F	[5.59]	SIGNAL
E	[5.59]	SIGNAL
PA	[N/A]	POWER

spec ref	*	dr	X Q Wang	2012/04/20	projection	MM	size	A4	scale	1:1
tolerance std	TOLERANCES UNLESS OTHERWISE SPECIFIED	eng	Luo Weller	2013/03/26		← MM →	ecn no	-	rel level	Released
see note		chr	-	-			product family	PwrBlade		
surface	linear	appr	Pei-Ming Zheng	2013/03/26	3ACP + 2P + 24S + 4P		dwg no	51939-667	rev	A
	angular	0°	±0.5	±0.25	±0.1	±2°				
www.fci.com		cat. no.	-	Product - Customer Drw			sheet 1 of 4			

Print File - REV C - 2009-06-09

1

2

3

PDS: Rev :A

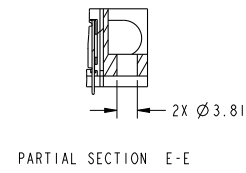
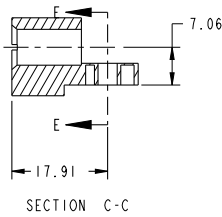
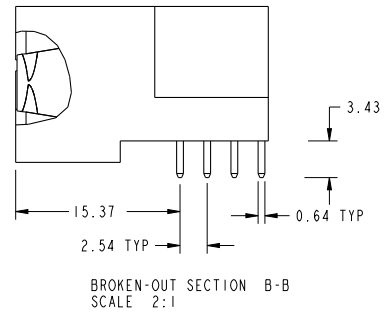
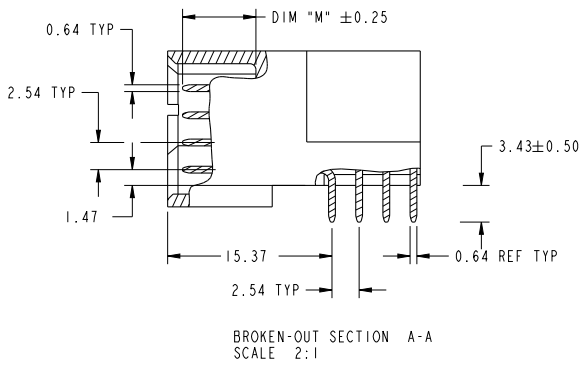
STATUS:Released

Printed: Mar 27, 2013



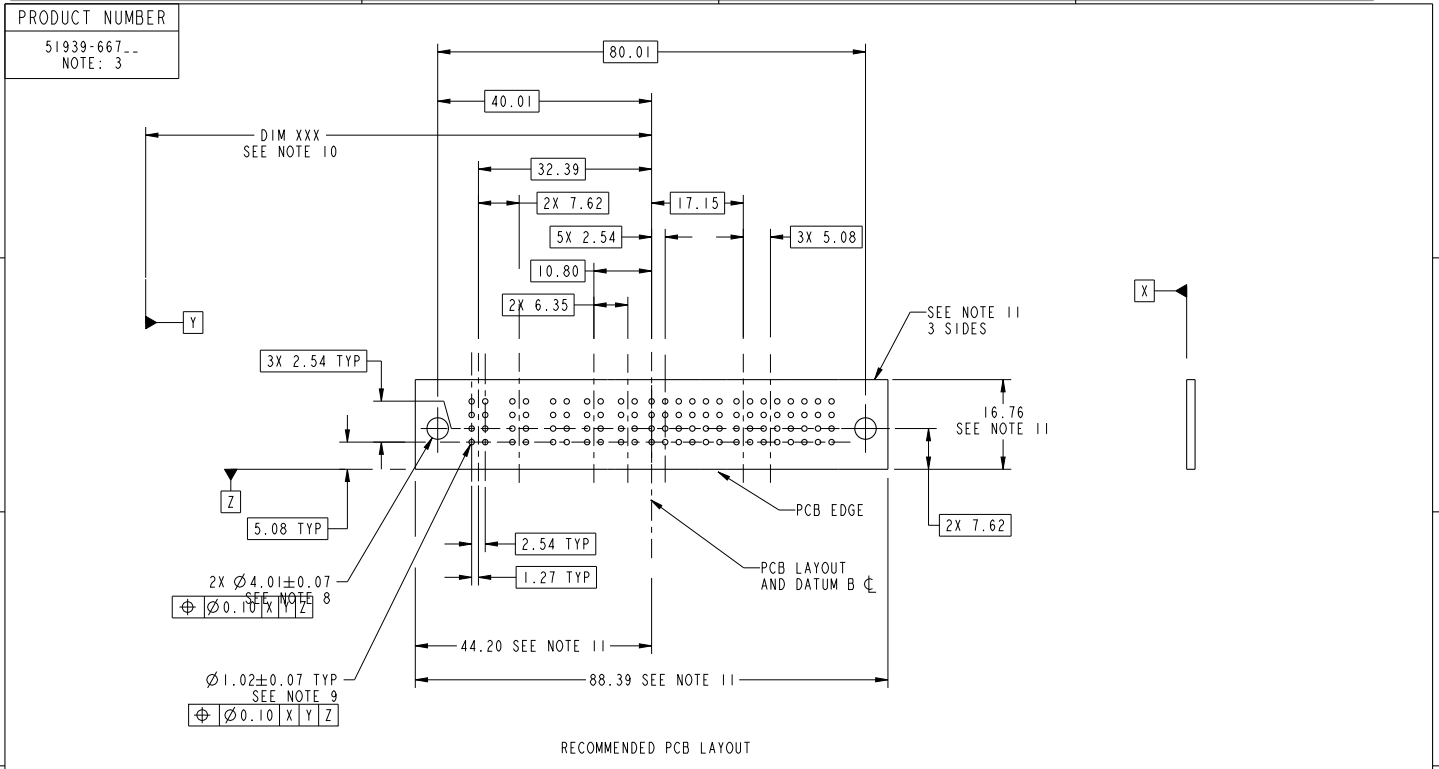
Copyright FCI.

PRODUCT NUMBER
51939-667...
NOTE: 3



dr	X Q Wang	2012/04/20	projection	MM	size	A4	scale	1:1
eng	Luo Weller	2013/03/26			ecn no	-	rel level	Released
chr	-	-			product family	PwrBlade		
appr	Pei-Ming Zheng	2013/03/26			title	3ACP + 2P + 24S + 4P		rev
www.fci.com			cat. no.		-		Product - Customer Drw	sheet 2 of 4
					dwg no	51939-667		A





RECOMMENDED PCB LAYOUT

dr	X Q Wang	2012/04/20	projection	MM	size	A4	scale	1:1	
eng	Luo Weller	2013/03/26			ecn no	-	rel level	Released	
chr	-	-			product family	PwrBlade			
appr	Pei-Ming Zheng	2013/03/26			3ACP + 2P + 24S + 4P RIGHT ANGLE SOLDER HEADER		cat. no. -	Product - Customer Drw	rev A
www.fci.com			www.fci.com		dwg no 51939-667	sheet 3 of 4			



Copyright FCI.

PRODUCT NUMBER

51939-667LF
NOTE: 3

NOTES:

1. DIMENSIONS AND TOLERANCES ARE IN ACCORDANCE WITH ASME Y14.5M, 1994 UNLESS OTHERWISE SPECIFIED.

CONNECTOR NOTES:

- 2. HOUSING MATERIAL: UL 94 V-0 GLASS FILLED HIGH-TEMP THERMOPLASTIC
POWER CONTACT MATERIAL: COPPER ALLOY
SIGNAL PIN MATERIAL: COPPER ALLOY
 - 3. SEE ITEM 1 & 2 IN PRINT 10064183 FOR PLATING SPEC OF 51939-667 AND 51939-667LF RESPECTIVELY.
 - 4. MANUFACTURER'S NAME, DATE CODE AND OPTIONAL P/N TO APPEAR ON THIS SURFACE. THE P/N CAN BE OMITTED IF THERE IS NOT ENOUGH SPACE ON THIS SURFACE.
 - 5. PRODUCT SPECIFICATION GS-12-149.
APPLICATION SPECIFICATION BUS-20-067.
 - 6. PACKAGED IN TRAYS.
- PCB NOTES:
- 7. ALL HOLE DIAMETERS ARE FINISHED HOLE SIZE.
 - 8. MOUNTING HOLES, WHERE APPLICABLE, ARE UNPLATED.
 - 9. $\varnothing 1.151 \pm 0.025$ DRILLED HOLES PLATED WITH 0.008 MIN SnPb OR Sn OVER 0.03 TO 0.08 Cu PLATING TO ACHIEVE $\varnothing 1.02 \pm 0.07$ HOLE.
 - 10. "DIM XXX" TO BE DETERMINED BY THE CUSTOMER.
 - 11. CONNECTOR KEEP-OUT ZONE.

dr	X Q Wang	2012/04/20	projection		MM	size	A4	scale	1:1	
eng	Luo Weller	2013/03/26	chr			-	ecn no	-		
appr	Pei-Ming Zheng	2013/03/26	product family	PwrBlade		rel level	Released			
			title	3ACP + 2P + 24S + 4P RIGHT ANGLE SOLDER HEADER		dwg no	51939-667		rev	A
www.fci.com			cat. no.	-		Product - Customer Drw		sheet 4 of 4		

Print File - REV C - 2009-06-09

