

## Excellent Integrated System Limited

Stocking Distributor

Click to view price, real time Inventory, Delivery & Lifecycle Information:

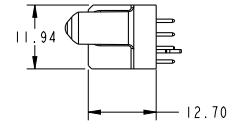
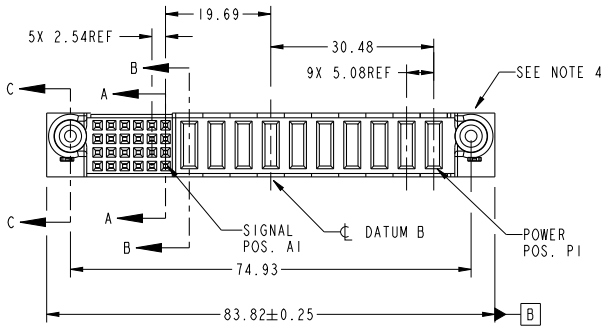
[FCI](#)

[51940-123LF](#)

For any questions, you can email us directly:

[sales@integrated-circuit.com](mailto:sales@integrated-circuit.com)

PRODUCT NO.	ROWS	SIGNAL									POWER								
		E2	5	4	3	2	1	P10	P9	P8	P7	P6	P5	P4	P3	P2	P1	E1	
51940-123- NOTE ③	D C B A																		



CODE	DIM "M" MATING LENGTH	CONTACT TYPE
E	N/A [N/A]	SIGNAL
PA	0.042 [1.07]	POWER
HA	N/A [N/A]	HOLD-DOWN

spec ref	*	dr	wcadmin	2006/06/19	projection	MM	size	A4	scale	1:1												
tolerance std	TOLERANCES UNLESS OTHERWISE SPECIFIED	eng	Luo Weller	2014/11/05			ec n no	ELX-DG-19309-1														
surface	<table border="1"> <tr> <td>linear</td> <td>0.X</td> <td>±0.50</td> </tr> <tr> <td></td> <td>0.XX</td> <td>±0.25</td> </tr> <tr> <td></td> <td>0.XXX</td> <td>±0.10</td> </tr> <tr> <td>angular</td> <td>0°</td> <td>±2°</td> </tr> </table>	linear	0.X	±0.50				0.XX	±0.25		0.XXX	±0.10	angular	0°	±2°	chr	-	appr	Pei-Ming Zheng	2014/11/05	product family	PwrBlade
linear	0.X	±0.50																				
	0.XX	±0.25																				
	0.XXX	±0.10																				
angular	0°	±2°																				
					part no	10P + 24S		rel level	Released													
					title	VERTICAL SOLDER RECEPT		dwg no	51940-123													
		<a href="http://www.fci.com">www.fci.com</a>			cat. no.	*	Product - Customer Drw		sheet 1 of 4													

Print File - REV C - 2009-06-09

1

2

3

PDS: Rev :B

STATUS:Released

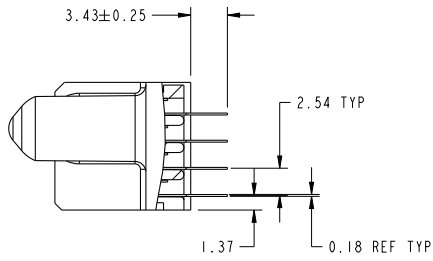
Printed: Nov 06, 2014



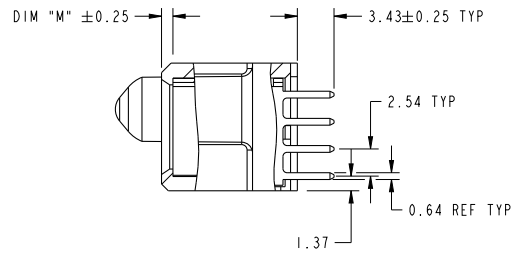
Copyright FCI.

PRODUCT NUMBER

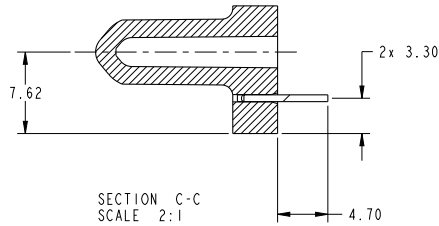
51940-123--  
NOTE ③



SECTION A-A  
SCALE 2:1



SECTION B-B  
SCALE 2:1



SECTION C-C  
SCALE 2:1

dr	wcadmin	2006/06/19	projection	MM	size	A4	scale	1:1
eng	Luo Weller	2014/11/05			ecn no	ELX-DG-19309-1		
chr	-	-			product family	PwrBlade	rel level	Released
appr	Pei-Ming Zheng	2014/11/05			part no	10P + 24S		rev
www.fci.com					cat. no.	* 51940-123		B
			Product - Customer Drw		sheet	2 of 4		

Print File : REV C - 2009-06-09

PDS: Rev :B

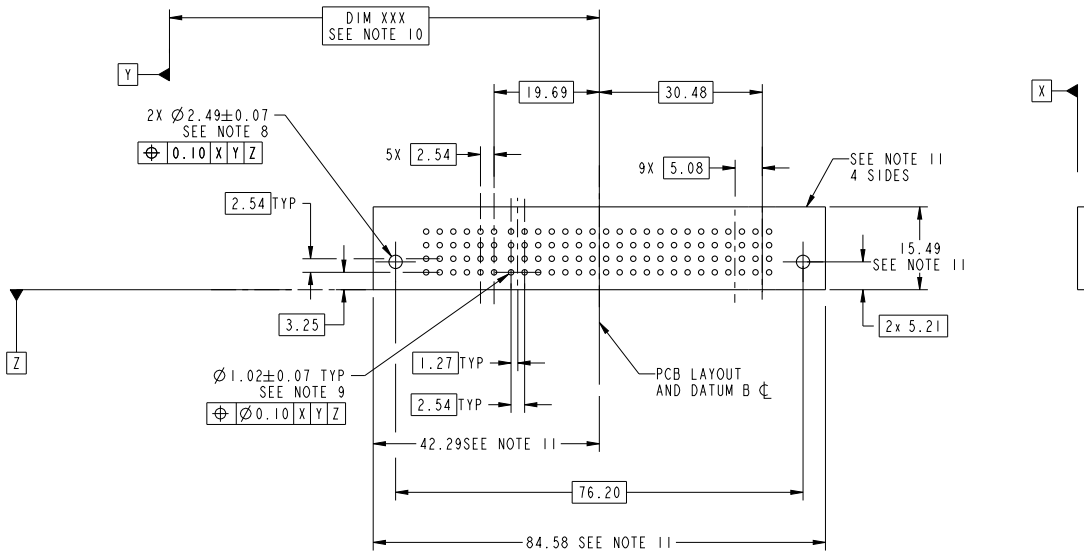
STATUS:Released

Printed: Nov 06, 2014



Copyright FCI.

PRODUCT NUMBER  
51940-123--  
NOTE (3)



dr	wcadmin	2006/06/19	projection	MM	size	A4	scale	1:1
eng	Luo Weller	2014/11/05			ecn no	ELX-DG-19309-1		
chr	-	-			rel level	Released		
appr	Pei-Ming Zheng	2014/11/05	product family	PwrBlade		rel level	Released	
	title 10P + 24S VERTICAL SOLDER RECEPT			dwg no	51940-123		rev	B
	www.fci.com	cat. no.	*	Product - Customer Drw		sheet 3 of 4		

Print File - REV C - 2009-06-09



Copyright FCI.

PRODUCT NUMBER

51940-123  
NOTE ③

NOTES:

1. DIMENSIONS AND TOLERANCES ARE IN ACCORDANCE WITH ASME Y14.5M, 1994 UNLESS OTHERWISE SPECIFIED.

CONNECTOR NOTES:

- ② HOUSING MATERIAL: UL 94 V-0 GLASS FILLED HIGH-TEMP THERMOPLASTIC  
POWER CONTACT MATERIAL: COPPER ALLOY  
SIGNAL PIN MATERIAL: COPPER ALLOY
  - 3. SEE ITEM 5 & 6 IN PRINT 10064183 FOR PLATING SPEC OF 51940-123 AND 51940-123LF RESPECTIVELY.
  - ④ MANUFACTURER'S NAME, DATE CODE AND OPTIONAL P/N TO APPEAR ON THIS SURFACE. THE P/N CAN BE OMITTED IF THERE IS NOT ENOUGH SPACE ON THIS SURFACE.
  - 5. PRODUCT SPECIFICATION GS-12-149.  
APPLICATION SPECIFICATION BUS-20-067.
  - 6. PACKAGED IN TRAYS.
- PCB NOTES:
- 7. ALL HOLE DIAMETERS ARE FINISHED HOLE SIZE.
  - ⑧ MOUNTING HOLES, WHERE APPLICABLE, ARE UNPLATED.
  - ⑨  $\varnothing 1.151 \pm 0.025$  DRILLED HOLES PLATED WITH  
0.008 MIN SnPb OR Sn OVER 0.03  
TO 0.08 Cu PLATING TO ACHIEVE  
 $\varnothing 1.02 \pm 0.07$  HOLE.
  - ⑩ "DIM XXX" TO BE DETERMINED BY THE CUSTOMER.
  - ⑪ CONNECTOR KEEP-OUT ZONE.
12. THE VOID CORING IN BETWEEN POWER MODULES, SIGNAL MODULES AND END MODULES ARE OPTIONAL AND THE SHAPE MAY BE DIFFERENT FOR OPTIMIZE THE MOLDING PROCESS. THE VOID CORING WILL NOT EFFECT TO PRODUCT FUNCTION.

dr	wcadmin	2006/06/19	projection			size	scale
eng	Luo Weller	2014/11/05				A4	1:1
chr	-	-				ec n no	ELX-DG-19309-1
appr	Pei-Ming Zheng	2014/11/05	product family	PwrBlade	rel level	<b>Released</b>	
			title 10P + 24S VERTICAL SOLDER RECEPT		dwg no 51940-123	rev B	
www.fci.com			cat. no.	*	Product - Customer Drw	sheet 4 of 4	

