

## Excellent Integrated System Limited

Stocking Distributor

Click to view price, real time Inventory, Delivery & Lifecycle Information:

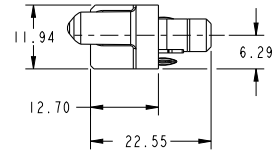
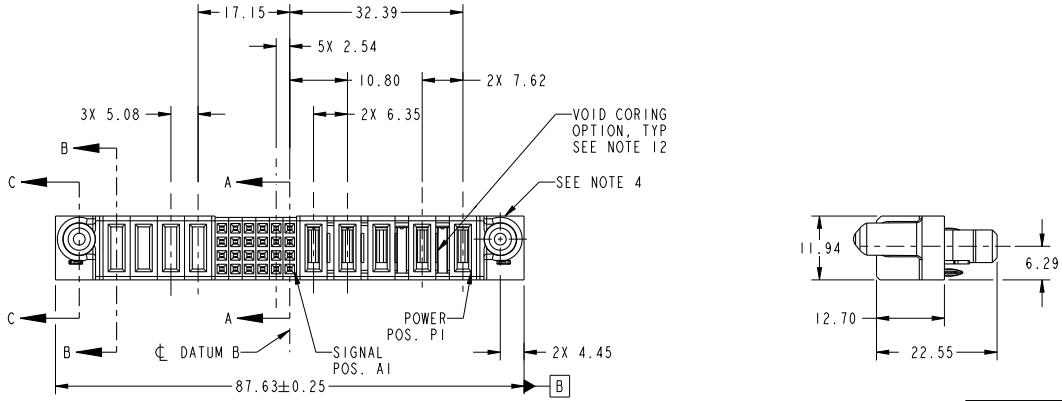
[FCI](#)

[51940-350LF](#)

For any questions, you can email us directly:

[sales@integrated-circuit.com](mailto:sales@integrated-circuit.com)

PRODUCT NO.	ROWS	POWER					SIGNAL					POWER						
		E2	P9	P8	P7	P6	4	5	4	3	2	1	P5	P4	P3	P2	P1	E1
51940-350-- NOTE: 3	D C B A																	



CODE	DIM "M" MATING LENGTH	CONTACT TYPE
PC	[ 1.07 ]	POWER
F	[ N/A ]	SIGNAL
HA	[ N/A ]	HOLD-DOWN
PG	[ 1.07 ]	POWER

spec ref	*	dr	Anson Liu	2010/04/23	projection		MM	size	A4	scale	1:1	
tolerance std	SEE NOTE	eng	Luo Weller	2012/09/19	chr	-	product family	PwrBlade	ecn no	-	rel level	Released
surface	✓	appr	Pei-Ming Zheng	2012/09/19	cat. no.	3AC CABLE P + 2DC CABLE P + 24S + 4P	VERTICAL PF RECEPT	www.fci.com	cat. no.	51940-350	rev	A
						Product - Customer Drw				sheet 1 of 4		

Print File : REC - 2009-08-09

1

2

3

PDS: Rev :A

STATUS:Released

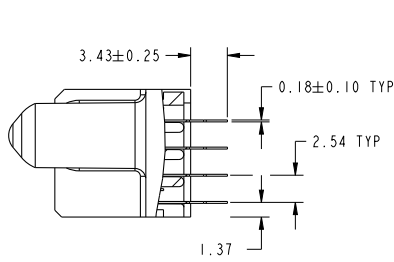
Printed: Sep 19, 2012



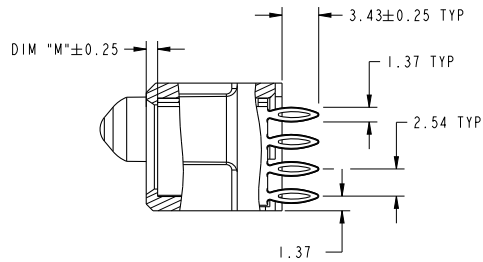
Copyright FCI.

PRODUCT NUMBER

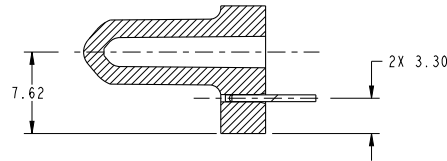
51940-350\_...  
NOTE: 3



SECTION A-A  
SCALE 2:1



SECTION B-B  
SCALE 2:1



SECTION C-C  
SCALE 2:1

dr	Anson Liu	2010/04/23	projection	MM	size	A4	scale	1:1
eng	Luo Weller	2012/09/19			ecn no	-		
chr	-	-	product family	PwrBlade	rel level	<b>Released</b>		
appr	Pei-Ming Zheng	2012/09/19						
			title 3AC CABLE P + 2DC CABLE P + 24S + 4P VERTICAL PF RECEPT		dwg no 51940-350	rev A		
www.fci.com			cat. no.	*	Product - Customer Drw		sheet 2 of 4	

Print File : REC - 2009-08-09

PDS: Rev :A

STATUS:Released

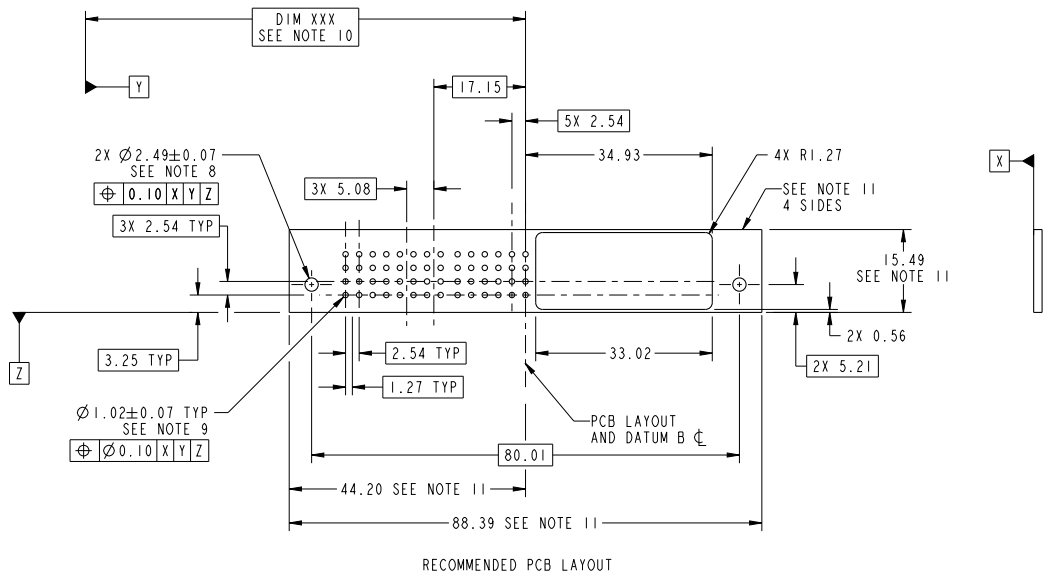
Printed: Sep 19, 2012



Copyright FCI.

PRODUCT NUMBER

51940-350\_  
NOTE: 3



RECOMMENDED PCB LAYOUT

dr	Anson Liu	2010/04/23	projection	MM	size	A4	scale	1:1
eng	Luo Weller	2012/09/19			ecn no	-	rel level	Released
chr	-	-			product family	PwrBlade	rev	A
appr	Pei-Ming Zheng	2012/09/19			3AC CABLE P + 2DC CABLE P + 24S + 4P VERTICAL PF RECEPT		www.fci.com cat. no. *	Product - Customer Drw sheet 3 of 4
					product family PwrBlade	rel level Released	dwg no 51940-350	rev A

Prod File - REV C - 2009-06-09



Copyright FCI.

PRODUCT NUMBER  
51940-350\_ \_  
NOTE: 3

NOTES:

1. DIMENSIONS AND TOLERANCES ARE IN ACCORDANCE WITH ASME Y14.5M, 1994 UNLESS OTHERWISE SPECIFIED.

CONNECTOR NOTES:

- ② HOUSING MATERIAL: UL 94 V-0 GLASS FILLED HIGH-TEMP THERMOPLASTIC  
POWER CONTACT MATERIAL: COPPER ALLOY  
SIGNAL PIN MATERIAL: COPPER ALLOY
- 3. PLATING SPEC  
SEE ITEM 7 & 8 IN PRINT 10064183 FOR PLATING SPEC OF 51940-350 AND 51940-350LF RESPECTIVELY.
- ④ MANUFACTURER'S NAME, DATE CODE AND OPTIONAL P/N TO APPEAR ON THIS SURFACE. THE P/N CAN BE OMITTED IF THERE IS NOT ENOUGH SPACE ON THIS SURFACE.
- 5. PRODUCT SPECIFICATION GS-12-149.  
APPLICATION SPECIFICATION BUS-20-067.
- 6. PACKAGED IN TRAYS.
- PCB NOTES:
- 7. ALL HOLE DIAMETERS ARE FINISHED HOLE SIZE.
- ⑧ MOUNTING HOLES, WHERE APPLICABLE, ARE UNPLATED.
- ⑨  $\varnothing 1.151 \pm 0.025$  DRILLED HOLES PLATED WITH 0.008 MIN SnPb OR Sn OVER 0.03 TO 0.08 Cu PLATING TO ACHIEVE  $\varnothing 1.02 \pm 0.07$  HOLE.
- ⑩ "DIM XXX" TO BE DETERMINED BY THE CUSTOMER.
- ⑪ CONNECTOR KEEP-OUT ZONE.
- 12. THE VOID CORING IN BETWEEN POWER MODULES, SIGNAL MODULES AND END MODULES ARE OPTIONAL AND THE SHAPE MAY BE DIFFERENT FOR OPTIMIZE THE MOLDING PROCESS. THE VOID CORING WILL NOT EFFECT TO PRODUCT FUNCTION.



Copyright FCI.

dr	Anson Liu	2010/04/23	projection		MM	size	A4	scale	1:1
eng	Luo Weller	2012/09/19	chr			-	ecn no	-	
appr	Pei-Ming Zheng	2012/09/19	product family	PwrBlade		rel level	Released		
		title 3AC CABLE P + 2DC CABLE P + 24S + 4P VERTICAL PF RECEPT	www.fci.com	cat. no.	*	Product - Customer Drw	sheet 4 of 4	rev A	

Print File : REC - 2009-08-09