

Excellent Integrated System Limited

Stocking Distributor

Click to view price, real time Inventory, Delivery & Lifecycle Information:

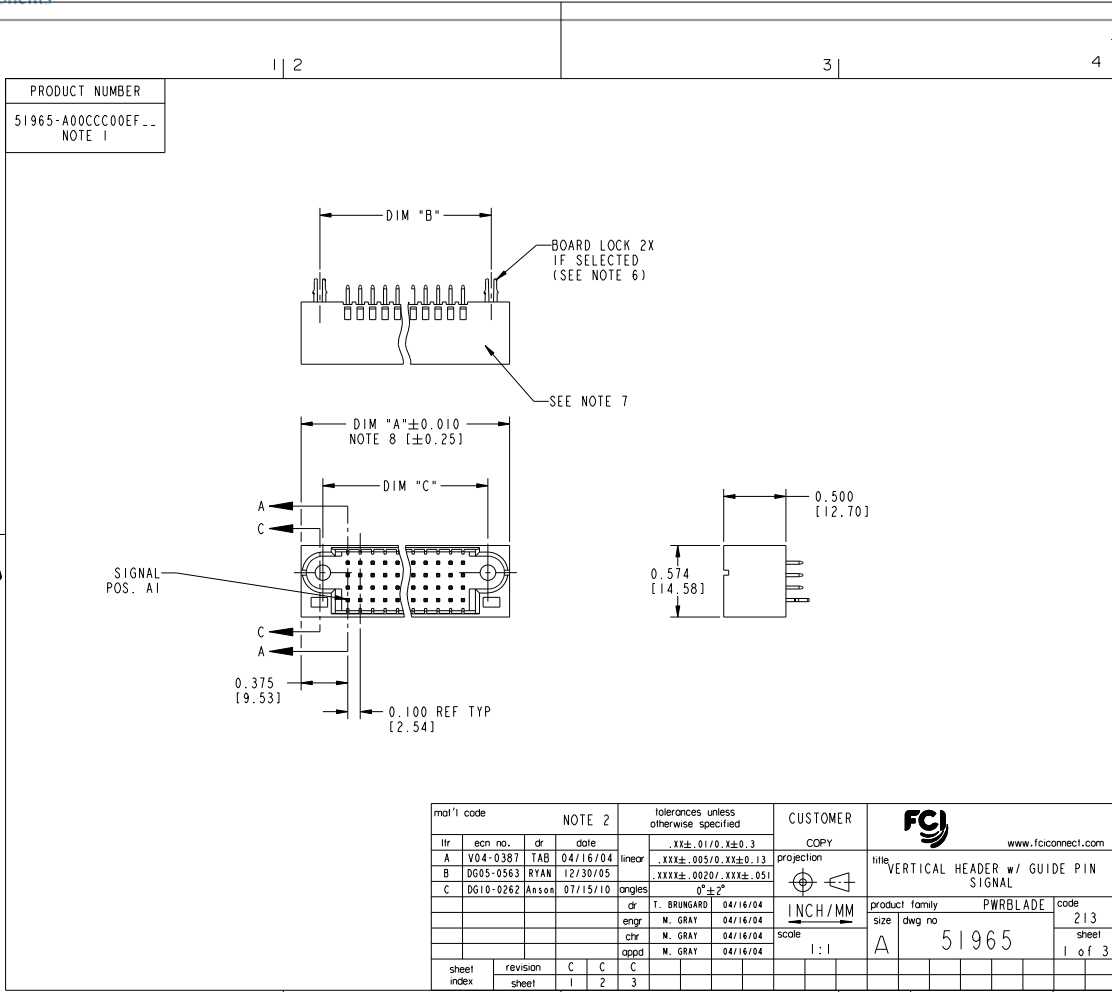
[FCI](#)
[51965-10002800AALF](#)

For any questions, you can email us directly:
sales@integrated-circuit.com

Tous droits strictement réservés. Reproduction ou communication, en tout ou en partie, sans autorisation écrite du propriétaire. Propriété de FCI. Droits de reproduction FCI.



All rights strictly reserved. Reproduction or issue in any form without written authority from the proprietor. Property of FCI. Copyright FCI.

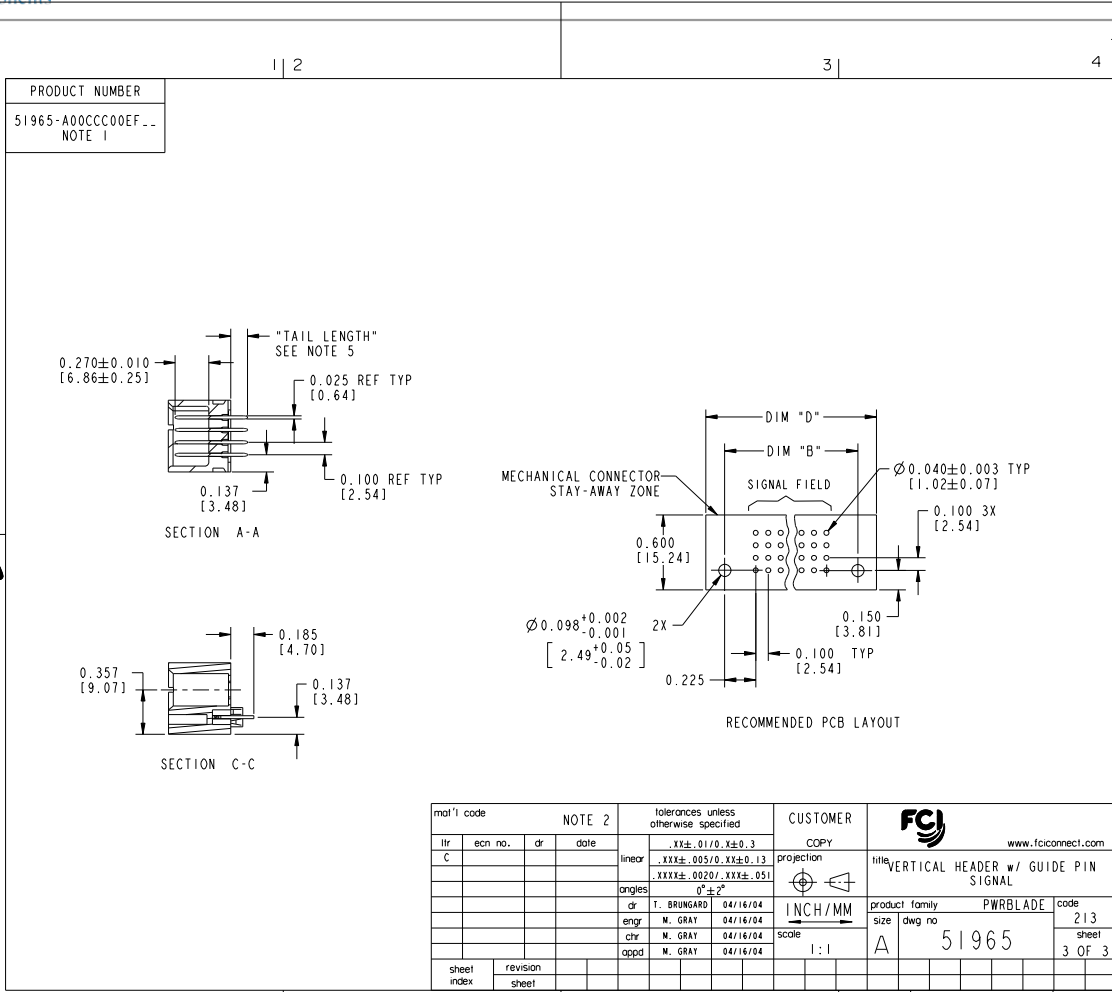


<p style="text-align: center;">1 2</p> <table border="1" style="width: 100%; border-collapse: collapse;"> <tr> <td style="width: 50%; padding: 5px;"> PRODUCT NUMBER 51965-A00CCC00EF... NOTE 1 </td> <td style="width: 50%; padding: 5px;"> <table border="1" style="width: 100%; border-collapse: collapse;"> <tr> <th style="width: 30%;">DIM</th> <th>LENGTH FORMULAS (SEE NOTE 8)</th> </tr> <tr> <td>DIM "A"</td> <td>.100 [2.54] x (CCC/4) + .650 [16.51] (NOTE 8)</td> </tr> <tr> <td>DIM "B"</td> <td>.100 [2.54] x (CCC/4) + .350 [8.89]</td> </tr> <tr> <td>DIM "C"</td> <td>.100 [2.54] x (CCC/4) + .300 [7.62]</td> </tr> <tr> <td>DIM "D"</td> <td>.100 [2.54] x (CCC/4) + .680 [17.27]</td> </tr> </table> </td> </tr> </table> <p style="text-align: center;">CONNECTOR NOTES</p> <p>1. PRODUCT NUMBER CODE: 51965 - A 00 CCC 00 E F LE <ul style="list-style-type: none"> NO THIS SUFFIX: 100u"/2.54um SnPb ON PCB INTERFACE ADD THIS SUFFIX: 78u"/2.00um Sn ON PCB INTERFACE RETENTION TO PCB (NOTE 6) TAIL OPTIONS (NOTE 5) ALWAYS "00" NUMBER OF SIGNAL CONTACTS (NOTE 4) ALWAYS "00" PLATING (NOTE 3) BASE NUMBER </p> <p>2. HOUSING MATERIAL: UL 94 V-0 GLASS FILLED HIGH TEMP THERMOPLASTIC SIGNAL CONTACT MATERIAL: COPPER ALLOY</p> <p>3. PLATING: 1-SEE PRINT 10064183 FOR PLATING SPEC OF 51965-100CCC00EF AND 51965-100CCC00EFLF RESPECTIVELY</p> <p>4. SIGNAL CONTACT, 004 TO 148 AVAILABLE.</p> <p>5. TAIL OPTIONS: A = 0.135 +0.015/-0.010 [3.43 +0.38/-0.25] SOLDER TO BOARD B = 0.165 +0.015/-0.010 [4.19 +0.38/-0.25] SOLDER TO BOARD C = 0.165 +0.015/-0.010 [4.19 +0.38/-0.25] PRESS FIT</p> <p>6. RETENTION TO PCB OPTIONS: A = BOARD LOCK (REQUIRES 0.098 +0.002/-0.001 [2.49 +0.05/-0.03] THUR HOLE IN PCB). RECOMMENDED ON SYMMETRIC CONNECTORS. BOARD LOCK TO BE USED IN CONJUNCTION WITH A .092 PCB OR THICKER. C = NO RETENTION FEATURE.</p> <p style="text-align: center;">7. MANUFACTURE'S NAME, P/N, AND DATE CODE TO APPEAR ON THIS SURFACE.</p> <p style="text-align: center;">8. THE MAXIMUM OVERALL LENGTH (DIM A) OF A PART IS 8.00 [203.2].</p> <p style="text-align: center;">9. PRODUCT SPECIFICATION GS-12-149.</p> <p style="text-align: center;">10. DIMENSIONS AND TOLERANCES ARE IN ACCORDANCE WITH ASME Y14.5m, 1994 UNLESS OTHERWISE SPECIFIED.</p> <p style="text-align: center;">PCB NOTES:</p> <p>11. ALL DIMENSIONS ARE BASIC UNLESS OTHERWISE SPECIFIED.</p> <p>12. ALL THROUGH HOLES ARE LOCATED WITH A TRUE POSITION OF 0.004 [0.10].</p> <p>13. ALL HOLE DIAMETERS ARE FINISHED HOLE SIZE</p> <p>14. Ø0.098 [2.49] THROUGH HOLES ARE UNPLATED.</p> <p>15. Ø0.0453±0.0010 [1.151±0.025] DRILLED HOLES PLATED WITH 0.0003 [0.008] MIN SnPb OVER 0.001 [0.03] TO 0.003 [0.08] Cu PLATING TO ACHIEVE A Ø0.040±0.003 [1.02±0.07] HOLE.</p> <p>16. FOR PRESSFIT APPLICATION USE FCI CAM TOOL 430169-XXX.</p>	PRODUCT NUMBER 51965-A00CCC00EF... NOTE 1	<table border="1" style="width: 100%; border-collapse: collapse;"> <tr> <th style="width: 30%;">DIM</th> <th>LENGTH FORMULAS (SEE NOTE 8)</th> </tr> <tr> <td>DIM "A"</td> <td>.100 [2.54] x (CCC/4) + .650 [16.51] (NOTE 8)</td> </tr> <tr> <td>DIM "B"</td> <td>.100 [2.54] x (CCC/4) + .350 [8.89]</td> </tr> <tr> <td>DIM "C"</td> <td>.100 [2.54] x (CCC/4) + .300 [7.62]</td> </tr> <tr> <td>DIM "D"</td> <td>.100 [2.54] x (CCC/4) + .680 [17.27]</td> </tr> </table>	DIM	LENGTH FORMULAS (SEE NOTE 8)	DIM "A"	.100 [2.54] x (CCC/4) + .650 [16.51] (NOTE 8)	DIM "B"	.100 [2.54] x (CCC/4) + .350 [8.89]	DIM "C"	.100 [2.54] x (CCC/4) + .300 [7.62]	DIM "D"	.100 [2.54] x (CCC/4) + .680 [17.27]	<p style="text-align: center;">3 4</p> <p style="text-align: center;">A</p>
PRODUCT NUMBER 51965-A00CCC00EF... NOTE 1	<table border="1" style="width: 100%; border-collapse: collapse;"> <tr> <th style="width: 30%;">DIM</th> <th>LENGTH FORMULAS (SEE NOTE 8)</th> </tr> <tr> <td>DIM "A"</td> <td>.100 [2.54] x (CCC/4) + .650 [16.51] (NOTE 8)</td> </tr> <tr> <td>DIM "B"</td> <td>.100 [2.54] x (CCC/4) + .350 [8.89]</td> </tr> <tr> <td>DIM "C"</td> <td>.100 [2.54] x (CCC/4) + .300 [7.62]</td> </tr> <tr> <td>DIM "D"</td> <td>.100 [2.54] x (CCC/4) + .680 [17.27]</td> </tr> </table>	DIM	LENGTH FORMULAS (SEE NOTE 8)	DIM "A"	.100 [2.54] x (CCC/4) + .650 [16.51] (NOTE 8)	DIM "B"	.100 [2.54] x (CCC/4) + .350 [8.89]	DIM "C"	.100 [2.54] x (CCC/4) + .300 [7.62]	DIM "D"	.100 [2.54] x (CCC/4) + .680 [17.27]		
DIM	LENGTH FORMULAS (SEE NOTE 8)												
DIM "A"	.100 [2.54] x (CCC/4) + .650 [16.51] (NOTE 8)												
DIM "B"	.100 [2.54] x (CCC/4) + .350 [8.89]												
DIM "C"	.100 [2.54] x (CCC/4) + .300 [7.62]												
DIM "D"	.100 [2.54] x (CCC/4) + .680 [17.27]												
<p style="text-align: center;">1 2</p> <p style="writing-mode: vertical-rl; transform: rotate(180deg); font-size: small;"> Tous droits strictement réservés. Reproduction ou communication, o des lres infidelle sous quelque forme que ce soit sans autorisation écrite du propriétaire. Propriété de c FCI. Droits de reproduction FCI. </p> <p style="writing-mode: vertical-rl; transform: rotate(180deg); font-size: small;"> All rights strictly reserved. Reproduction or issue in kind, copies in any form whatever is not permitted without written authority from the proprietor. Property of FCI. Copyright FCI. </p> <div style="text-align: center;"> </div>	<p style="text-align: center;">3 4</p> <p style="text-align: center;">B</p>												

Tous droits strictement réservés. Reproduction ou communication, o des liens interfile
 sous quelque forme que ce soit sans autorisation écrite du propriétaire.
 Propriété de c FCI. Droits de reproduction FCI.



All rights strictly reserved. Reproduction or issue in any media, in any
 form whatever is not permitted without written authority from the proprietor.
 Property of FCI. Copyright FCI.



mal' code			NOTE 2		tolerances unless otherwise specified		CUSTOMER		FCI		www.fciconnect.com	
ltr	ecm no.	dr	date	linear	.xx±.01/0.xx±0.3	projection	COPY		VERTICAL HEADER w/ GUIDE PIN SIGNAL			
C				angles	.xxx±.005/0.xx±0.13		INCH/MM		product family PWRBLADE		code 213	
				dr	.xxx±.0020/.xxx±.051		scale 1:1		size dwg no 51965		sheet 3 OF 3	
				enrg	0°±2°							
				chr	T. BRUNGARD 04/16/04							
				oppd	M. GRAY 04/16/04							
					M. GRAY 04/16/04							
					M. GRAY 04/16/04							
sheet index	revision sheet											

Pro/E 3 code code 22526 4