

Excellent Integrated System Limited

Stocking Distributor

Click to view price, real time Inventory, Delivery & Lifecycle Information:

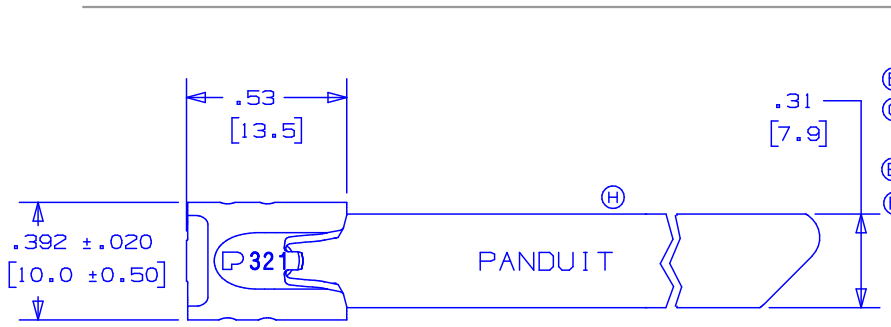
[Panduit](#)

[MLT2H-LP321](#)

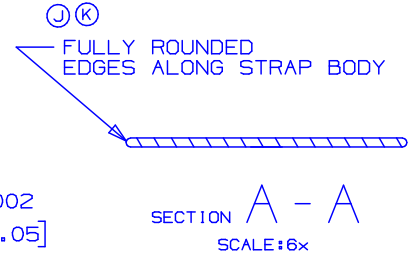
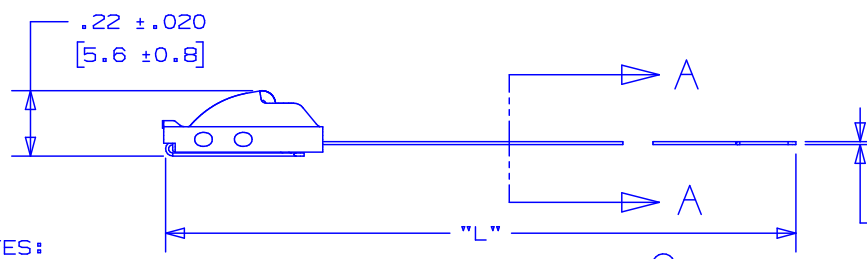
For any questions, you can email us directly:

sales@integrated-circuit.com

THIS COPY IS PROVIDED ON A RESTRICTED BASIS AND IS NOT TO BE USED IN ANY WAY DETRIMENTAL TO THE INTERESTS OF PANDUIT CORP.



PANDUIT PART NO.	PACKAGE QTY.	MAX BUNDLE DIA	LENGTH [Ⓣ] L ±.3 [7]
MLT2H-LP321	50	2" [51]	7.9" [201]
MLT4H-LP321	50	4" [102]	14.3" [362]
MLT6H-LP321	50	6" [152]	20.5" [521]
MLT8H-LP321	50	8" [203]	26.8" [679]



NOTES:

- 1.) APPLICATION TOOLS - GS4MT, PPTMT, ST2MT, ST3MT, HTMT
- 2.) MINIMUM LOOP TENSILE STRENGTH - 450 LBS. (2000 NEWTONS) WHEN TESTED ON A 1.5" MANDREL.
- 3.) [] DENOTES DIMENSION IN MILLIMETERS
- 4.) TOLERANCES:
 - .XXX = ±.010 [.25]
 - .XX = ±.02 [.5]
 - .X = ±.03 [.8]
 - ANGLES = ±2°
- 5.) MATERIAL: 321 STAINLESS STEEL

04	7/04	JAMB		Ⓚ REMOVED "ASTM NO.1 FULL RADIUS" AND REPLACED WITH "FULLY ROUNDED".	11902		
03	7/04	JAMB	DPN	Ⓛ RADIUS EDGES: "AISI" CHANGED TO "ASTM"	11898	CCH	DPN JJB
02	11/03	JAMB	DPN	Ⓢ ADDED APPLICATION TOOL "ST3MT". Ⓜ REMOVED "321" DESIGNATION FROM PANDUIT I.D.	11292	CCH	JJB
01	6/03	JAMB	DPN	Ⓛ MIN LOOP TENSILE STRENGTH WAS 250 LBS. (1112 NEWTONS) Ⓜ MAX.BUNDLE DIA.[mm] WAS 50 Ⓣ MAX.BUNDLE DIA[mm] WAS 101 LGTH.WAS 14.2 [361] Ⓣ TOL.WAS ±.2 [5]	10568	CCH	JJB
--	---	---	---	Ⓛ LGTH.[mm] WAS 681 Ⓣ REMOVED PART NO.MLT10H-LP321	-----	---	---
00	9/02	JAMB	DPN	RELEASED	10059	CCH	JJB

PANDUIT CORP. TINLEY PARK, ILLINOIS

METAL LOCKING TIE HEAVY SERIES - 321 STAINLESS STEEL

REV	DATE	BY	CHK	DESCRIPTION	ECN #	PM	CUST	DRAWN BY	CHK'D	SCALE	DRAWING NO.
								JAMB	DPN	2x	S41118