

## Excellent Integrated System Limited

Stocking Distributor

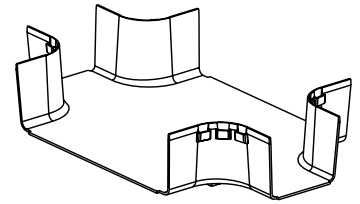
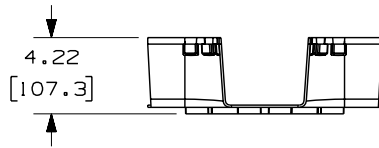
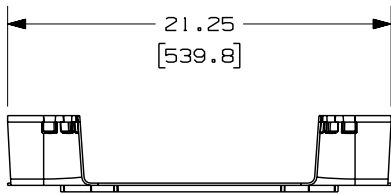
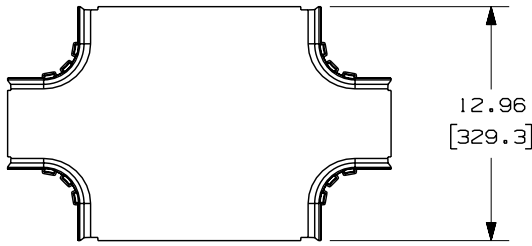
Click to view price, real time Inventory, Delivery & Lifecycle Information:

[Panduit](#)  
[FRFWC12X4W4BL](#)

For any questions, you can email us directly:  
[sales@integrated-circuit.com](mailto:sales@integrated-circuit.com)

THIS COPY IS PROVIDED ON A RESTRICTED BASIS AND IS NOT TO BE USED IN ANY WAY DETRIMENTAL TO THE INTERESTS OF PANDUIT CORP.

PANDUIT PART NUMBER	WEIGHT
FRFWC12X4W4	1.99 LB/EACH (903g/EACH)



NOTES:

1. SEE CURRENT CATALOG FOR ADDITIONAL PART SUFFIXES TO INDICATE COLOR AND/OR PACKAGE QUANTITY.
2. THE FIBERRUNNER 12x4 FOUR-WAY CROSS WITH 4" EXITS IS DESIGNED WITH A MINIMUM 2" (50.8) BEND RADIUS TO PROTECT FIBER OPTIC CABLES.
3. DIMENSIONS IN PARENTHESES ARE IN METRIC.

ENG. REF.: D39774BG\_DC/01 FRFWC12X4W4

CAD FILENAME/LAYERS		FRFWC12X4W4.pdf	
PANDUIT		CORP TINLEY PARK, ILLINOIS	
FIBERRUNNER 12x4 FOUR-WAY CROSS WITH 4" EXITS (FRFWC12X4W4) CUSTOMER DRAWING			
UNLESS OTHERWISE SPECIFIED, DIMENSIONAL TOLERANCES ARE:		UNLESS OTHERWISE SPECIFIED, ALL DIMENSIONS ARE GIVEN IN INCHES, THIRD ANGLE PROJECTION.	
(.X) ±	(.XXX) ±		
(.XX) ± .03 (.8)	ANGLES ±		
DRAWN BY: MSO	MAT'L: ABS	SCALE: NONE	
DATE: 10-22-08		DRAWING NO.: 39774-07	DWG SIZE: A
CHK'D: SL			

REV	DATE	BY	CHK	DESCRIPTION	ECN	R	CUST	SUP	GMBH
I	4-27-09	MSO	SL	A. REVISED PART WEIGHT.	39774-07	RN	RN		
R	10-22-08	MSO	SL	RELEASED TO PRODUCTION	39774-07	RN	RN		