

## Excellent Integrated System Limited

Stocking Distributor

Click to view price, real time Inventory, Delivery & Lifecycle Information:

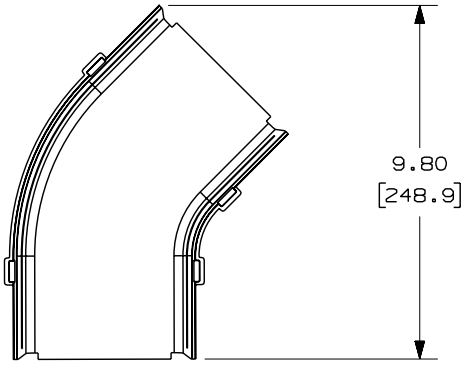
[Panduit](#)

[FRH454X4BL](#)

For any questions, you can email us directly:

[sales@integrated-circuit.com](mailto:sales@integrated-circuit.com)

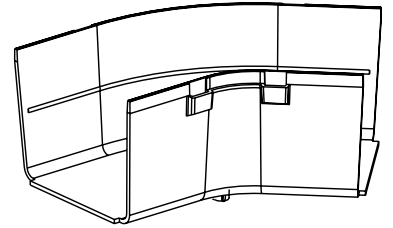
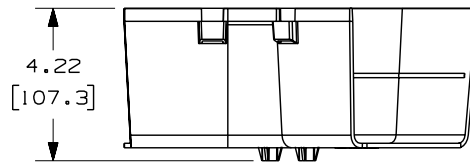
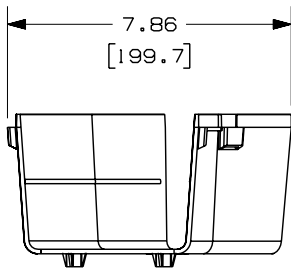
THIS COPY IS PROVIDED ON A RESTRICTED BASIS AND IS NOT TO BE USED IN ANY WAY DETRIMENTAL TO THE INTERESTS OF PANDUIT CORP.



PANDUIT PART NUMBER	WEIGHT
FRH454X4	0.59 LB/EACH (266g/EACH)

**NOTES:**

1. SEE CURRENT CATALOG FOR ADDITIONAL PART SUFFIXES TO INDICATE COLOR AND/OR PACKAGE QUANTITY.
2. THE FIBERRUNNER 4x4 HORIZONTAL 45° ANGLE FITTING IS DESIGNED WITH A MINIMUM 2" (50.8) BEND RADIUS TO PROTECT FIBER OPTIC CABLES.
3. DIMENSIONS IN PARENTHESES ARE IN METRIC.



ENG. REF.: D37847BM\_DC\_FRH454X4\_02.prt

CAD FILENAME/LAYERS		E FRH454X4.pdf	
<b>PANDUIT</b>		CORP TINLEY PARK, ILLINOIS	
FIBERRUNNER 4x4 HORIZONTAL 45° ANGLE FITTING (FRH454X4)			
CUSTOMER DRAWING			
UNLESS OTHERWISE SPECIFIED, DIMENSIONAL TOLERANCES ARE:		UNLESS OTHERWISE SPECIFIED, ALL DIMENSIONS ARE GIVEN IN INCHES, THIRD ANGLE PROJECTION.	
(.X) ±	(.XXX) ±		
(.XX) ±.03 (.8)	ANGLES ±		
DRAWN BY	MAT'L:	SCALE	NONE
JHNU		DRAWING NO.	37847-56
DATE		DWG	A
7-16-01	ABS	SIZE	
CHK'D	RPA		

REV	DATE	BY	CHK	DESCRIPTION	ECN	R	CUST	SUP	GMBH
-	-	-	-	G. REVISED GENERAL NOTES	-	-	-	-	-
-	-	-	-	F. REVISED PART WEIGHT E. REVISED CAD FILENAME	-	-	-	-	-
2	6-28-06	DTP	RN	D. REVISED DRAWING TITLE C. REVISED AND REDRAWN	37847-56	RN	RN		