

## Excellent Integrated System Limited

Stocking Distributor

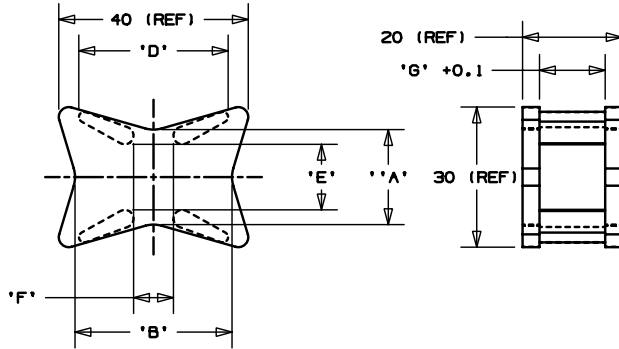
Click to view price, real time Inventory, Delivery & Lifecycle Information:

[Panduit](#)  
[CSEH15A30-C100](#)

For any questions, you can email us directly:  
[sales@integrated-circuit.com](mailto:sales@integrated-circuit.com)

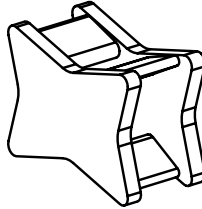
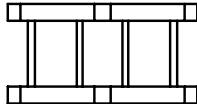
THIS COPY IS PROVIDED ON A RESTRICTED BASIS AND IS NOT TO BE USED IN ANY WAY DETRIMENTAL TO THE INTERESTS OF PANDUIT CORP.

PANDUIT PART NO.	DIMENSIONS							WEIGHT grams / 100 pcs
	'A'	'B'	'C'	'D'	'E'	'F'	'G'	
CSEH15A30-_20	18.6	31	26.8	30	11.6	8	13.2	833
CSEH15A30-_0								
CSEH15A30-_100								



**NOTES:**

- MATERIAL:**  
 -20 NYLON 6/6  
 -0 NYLON 6/6 UV STABILIZED  
 -100 POLYPROPYLENE UV STABILIZED  
 IMPACT MODIFIED
- COLOR:** -20, -0, & -100 BLACK
- FOR USE WITH PANDUIT CABLE TIE TYPE:**  
 M- MINATURE I- INTERMEDIATE  
 S- STANDARD H- HEAVY  
 EH- EXTRA HEAVY
- SEE CURRENT PRICE SHEET FOR PART NUMBER SUFFIX DESIGNATION PACKAGE SIZE AND COLOR.



DIMENSIONS ARE METRIC [ mm ]	
DID FILENAME/VERSION G1932BV_PB_CSEH15A30_00	
<b>PANDUIT</b> CORP. TINLEY PARK, ILLINOIS	
SPACER	
UNLESS OTHERWISE SPECIFIED, DIMENSIONAL TOLERANCES ARE: ±0.5mm	UNLESS OTHERWISE SPECIFIED, ALL DIMENSIONS ARE GIVEN IN METRIC, THIRD ANGLE PROJECTION.
DRAWN BY JAD	MAT'L'S
DATE 4/28/03	SEE NOTE 1
SCALE NONE	DWGING NO. GB1932BV
	DWG SIZE A

REV	DATE	BY	CHK	DESCRIPTION	ECN	R	CUST	SUP
R	4/28/03	JAD		INITIAL RELEASE	GB1932BV	R		