

## Excellent Integrated System Limited

Stocking Distributor

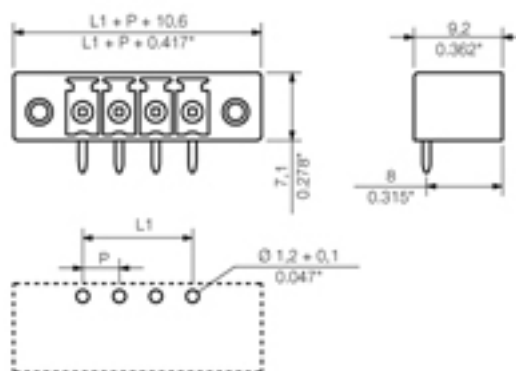
Click to view price, real time Inventory, Delivery & Lifecycle Information:

[Weidmüller](#)  
[1793490000](#)

For any questions, you can email us directly:

[sales@integrated-circuit.com](mailto:sales@integrated-circuit.com)

Product catalogue | PCB connection systems | PCB plug-in connectors | Pitch 3.81 mm (0.150 inch) | Plug connectors, solder connection, pitch 3.81 | SC 3.81/90 | SC 3.81/90F


**General ordering data**

Order No.	1793490000
Part designation	SC 3.81/12/90F3.2SN GN
Version	PCB plug-in connector, Male connectors, Soldered connection, Pitch: 3.81 mm, No. of poles: 12, 90°, Box
EAN	4032248228768
Qty.	50 pc(s).

**System parameters**

Fitted to PCB	Soldered connection
Outgoing elbow	90°
Pitch	3.81 mm
Pitch in inch	0.15 inch
No. of poles	12
Solder pin length	3.2 mm
Can be coded	Yes
No. of rows	1
No. of solder pins per pole	1
Dia. of fitting hole	1.2 mm
Fitting hole tolerance	+ 0.1 mm
L1 in mm	41.91 mm
L1 in inch	1.65 inch
Insulation resistance	1,000 MΩ
Electric shock protection to DIN VDE 0470	IP 20
Electric shock protection to DIN VDE 0470	Safe from finger touch

**Material data**

Insulating material	PA GF
Colour	Pale green
colour chart	Similar to RAL 6021
Insulating material group	II
Flammability class UL 94	V-0
CTI	$\geq 475$
Contact base material	Copper alloy

Product catalogue | PCB connection systems | PCB plug-in connectors | Pitch 3.81 mm (0.150 inch) | Plug connectors, solder connection, pitch 3.81 | SC 3.81/90 | SC 3.81/90F

#### Material data

Contact surface	tinned
Constant operating temp., min.	-25 °C
Constant operating temp., max.	120 °C
Storage temperature, min.	-25 °C
Storage temperature, max.	55 °C
Max. relative humidity during storage	93 %

#### DIN IEC rating data

Rated current, min. No. pins (Tu=20°C)	17.5 A
Rated current, min. No. pins(Tu=40°C)	17.5 A
Rated voltage for overvoltage class/pollution severity III/3	160 V
Rated impulse withstand voltage for overvoltage class/pollution severity III/3	2.5 kV
Rated voltage for overvoltage class/pollution severity III/2	160 V
Rated impulse withstand voltage for overvoltage class/pollution severity III/2	2.5 kV
Rated voltage for overvoltage class/pollution severity II/2	320 V
Rated impulse withstand voltage for overvoltage class/pollution severity II/2	2.5 kV
Short-time withstand current resistance	3 x 1s with 76 A

#### CSA rating data

Rated voltage (Use group D)	300 V
Rated current (Use group D)	10 A

#### UL 1059 rating data

Rated voltage (Use group D)	300 V
Rated current (Use group D)	10 A

#### Approvals

Approvals institutes



#### Classifications

ETIM 2.0	NK
ETIM 3.0	EC001284
eClass 4.1	27-26-07-01
eClass 5.0	27-26-07-01
eClass 5.1	27-26-07-04

#### Similar products

Order No.	Part designation	Version
-----------	------------------	---------

Product catalogue | PCB connection systems | PCB plug-in connectors | Pitch 3.81 mm (0.150 inch) | Plug connectors, solder connection, pitch 3.81 | SC 3.81/90 | SC 3.81/90F

1942450000	SC 3.81/2/90F3.2SN OR	PCB plug-in connector, Male connectors, Soldered connection, Pitch: 3.81 mm, No. of poles: 2, 90°, Box
1793330000	SC 3.81/2/90F3.2SN SW	PCB plug-in connector, Male connectors, Soldered connection, Pitch: 3.81 mm, No. of poles: 2, 90°, Box
1793420000	SC 3.81/2/90F3.2SN GN	PCB plug-in connector, Male connectors, Soldered connection, Pitch: 3.81 mm, No. of poles: 2, 90°, Box
1942460000	SC 3.81/3/90F3.2SN OR	PCB plug-in connector, Male connectors, Soldered connection, Pitch: 3.81 mm, No. of poles: 3, 90°, Box
1793340000	SC 3.81/3/90F3.2SN SW	PCB plug-in connector, Male connectors, Soldered connection, Pitch: 3.81 mm, No. of poles: 3, 90°, Box
1793430000	SC 3.81/3/90F3.2SN GN	PCB plug-in connector, Male connectors, Soldered connection, Pitch: 3.81 mm, No. of poles: 3, 90°, Box
1942470000	SC 3.81/4/90F3.2SN OR	PCB plug-in connector, Male connectors, Soldered connection, Pitch: 3.81 mm, No. of poles: 4, 90°, Box
1793350000	SC 3.81/4/90F3.2SN SW	PCB plug-in connector, Male connectors, Soldered connection, Pitch: 3.81 mm, No. of poles: 4, 90°, Box
1793440000	SC 3.81/4/90F3.2SN GN	PCB plug-in connector, Male connectors, Soldered connection, Pitch: 3.81 mm, No. of poles: 4, 90°, Box
1942480000	SC 3.81/5/90F3.2SN OR	PCB plug-in connector, Male connectors, Soldered connection, Pitch: 3.81 mm, No. of poles: 5, 90°, Box
1793360000	SC 3.81/5/90F3.2SN SW	PCB plug-in connector, Male connectors, Soldered connection, Pitch: 3.81 mm, No. of poles: 5, 90°, Box
1793450000	SC 3.81/5/90F3.2SN GN	PCB plug-in connector, Male connectors, Soldered connection, Pitch: 3.81 mm, No. of poles: 5, 90°, Box
1942490000	SC 3.81/6/90F3.2SN OR	PCB plug-in connector, Male connectors, Soldered connection, Pitch: 3.81 mm, No. of poles: 6, 90°, Box
1793370000	SC 3.81/6/90F3.2SN SW	PCB plug-in connector, Male connectors, Soldered connection, Pitch: 3.81 mm, No. of poles: 6, 90°, Box
1793460000	SC 3.81/6/90F3.2SN GN	PCB plug-in connector, Male connectors, Soldered connection, Pitch: 3.81 mm, No. of poles: 6, 90°, Box
1942500000	SC 3.81/7/90F3.2SN OR	PCB plug-in connector, Male connectors, Soldered connection, Pitch: 3.81 mm, No. of poles: 7, 90°, Box
1942740000	SC 3.81/7/90F3.2SN SW	PCB plug-in connector, Male connectors, Soldered connection, Pitch: 3.81 mm, No. of poles: 7, 90°, Box
1942640000	SC 3.81/7/90F3.2SN GN	PCB plug-in connector, Male connectors, Soldered connection, Pitch: 3.81 mm, No. of poles: 7, 90°, Box
1942510000	SC 3.81/8/90F3.2SN OR	PCB plug-in connector, Male connectors, Soldered connection, Pitch: 3.81 mm, No. of poles: 8, 90°, Box
1793380000	SC 3.81/8/90F3.2SN SW	PCB plug-in connector, Male connectors, Soldered connection, Pitch: 3.81 mm, No. of poles: 8, 90°, Box
1793470000	SC 3.81/8/90F3.2SN GN	PCB plug-in connector, Male connectors, Soldered connection, Pitch: 3.81 mm, No. of poles: 8, 90°, Box
1942520000	SC 3.81/9/90F3.2SN OR	PCB plug-in connector, Male connectors, Soldered connection, Pitch: 3.81 mm, No. of poles: 9, 90°, Box
1942750000	SC 3.81/9/90F3.2SN SW	PCB plug-in connector, Male connectors, Soldered connection, Pitch: 3.81 mm, No. of poles: 9, 90°, Box
1942650000	SC 3.81/9/90F3.2SN GN	PCB plug-in connector, Male connectors, Soldered connection, Pitch: 3.81 mm, No. of poles: 9, 90°, Box
1942530000	SC 3.81/10/90F3.2SN OR	PCB plug-in connector, Male connectors, Soldered connection, Pitch: 3.81 mm, No. of poles: 10, 90°, Box
1793390000	SC 3.81/10/90F3.2SN SW	PCB plug-in connector, Male connectors, Soldered connection, Pitch: 3.81 mm, No. of poles: 10, 90°, Box

Product catalogue | PCB connection systems | PCB plug-in connectors | Pitch 3.81 mm (0.150 inch) | Plug connectors, solder connection, pitch 3.81 | SC 3.81/90 | SC 3.81/90F

1793480000	SC 3.81/10/90F3.2SN GN	PCB plug-in connector, Male connectors, Soldered connection, Pitch: 3.81 mm, No. of poles: 10, 90°, Box
1942540000	SC 3.81/11/90F3.2SN OR	PCB plug-in connector, Male connectors, Soldered connection, Pitch: 3.81 mm, No. of poles: 11, 90°, Box
1942760000	SC 3.81/11/90F3.2SN SW	PCB plug-in connector, Male connectors, Soldered connection, Pitch: 3.81 mm, No. of poles: 11, 90°, Box
1942660000	SC 3.81/11/90F3.2SN GN	PCB plug-in connector, Male connectors, Soldered connection, Pitch: 3.81 mm, No. of poles: 11, 90°, Box
1942550000	SC 3.81/12/90F3.2SN OR	PCB plug-in connector, Male connectors, Soldered connection, Pitch: 3.81 mm, No. of poles: 12, 90°, Box
1793400000	SC 3.81/12/90F3.2SN SW	PCB plug-in connector, Male connectors, Soldered connection, Pitch: 3.81 mm, No. of poles: 12, 90°, Box
1942560000	SC 3.81/13/90F3.2SN OR	PCB plug-in connector, Male connectors, Soldered connection, Pitch: 3.81 mm, No. of poles: 13, 90°, Box
1942770000	SC 3.81/13/90F3.2SN SW	PCB plug-in connector, Male connectors, Soldered connection, Pitch: 3.81 mm, No. of poles: 13, 90°, Box
1942670000	SC 3.81/13/90F3.2SN GN	PCB plug-in connector, Male connectors, Soldered connection, Pitch: 3.81 mm, No. of poles: 13, 90°, Box
1942570000	SC 3.81/14/90F3.2SN OR	PCB plug-in connector, Male connectors, Soldered connection, Pitch: 3.81 mm, No. of poles: 14, 90°, Box
1942780000	SC 3.81/14/90F3.2SN SW	PCB plug-in connector, Male connectors, Soldered connection, Pitch: 3.81 mm, No. of poles: 14, 90°, Box
1942680000	SC 3.81/14/90F3.2SN GN	PCB plug-in connector, Male connectors, Soldered connection, Pitch: 3.81 mm, No. of poles: 14, 90°, Box
1942580000	SC 3.81/15/90F3.2SN OR	PCB plug-in connector, Male connectors, Soldered connection, Pitch: 3.81 mm, No. of poles: 15, 90°, Box
1942790000	SC 3.81/15/90F3.2SN SW	PCB plug-in connector, Male connectors, Soldered connection, Pitch: 3.81 mm, No. of poles: 15, 90°, Box
1942690000	SC 3.81/15/90F3.2SN GN	PCB plug-in connector, Male connectors, Soldered connection, Pitch: 3.81 mm, No. of poles: 15, 90°, Box
1942590000	SC 3.81/16/90F3.2SN OR	PCB plug-in connector, Male connectors, Soldered connection, Pitch: 3.81 mm, No. of poles: 16, 90°, Box
1793410000	SC 3.81/16/90F3.2SN SW	PCB plug-in connector, Male connectors, Soldered connection, Pitch: 3.81 mm, No. of poles: 16, 90°, Box
1793500000	SC 3.81/16/90F3.2SN GN	PCB plug-in connector, Male connectors, Soldered connection, Pitch: 3.81 mm, No. of poles: 16, 90°, Box
1942600000	SC 3.81/17/90F3.2SN OR	PCB plug-in connector, Male connectors, Soldered connection, Pitch: 3.81 mm, No. of poles: 17, 90°, Box
1942800000	SC 3.81/17/90F3.2SN SW	PCB plug-in connector, Male connectors, Soldered connection, Pitch: 3.81 mm, No. of poles: 17, 90°, Box
1942700000	SC 3.81/17/90F3.2SN GN	PCB plug-in connector, Male connectors, Soldered connection, Pitch: 3.81 mm, No. of poles: 17, 90°, Box
1942610000	SC 3.81/18/90F3.2SN OR	PCB plug-in connector, Male connectors, Soldered connection, Pitch: 3.81 mm, No. of poles: 18, 90°, Box
1942810000	SC 3.81/18/90F3.2SN SW	PCB plug-in connector, Male connectors, Soldered connection, Pitch: 3.81 mm, No. of poles: 18, 90°, Box
1942710000	SC 3.81/18/90F3.2SN GN	PCB plug-in connector, Male connectors, Soldered connection, Pitch: 3.81 mm, No. of poles: 18, 90°, Box
1942620000	SC 3.81/19/90F3.2SN OR	PCB plug-in connector, Male connectors, Soldered connection, Pitch: 3.81 mm, No. of poles: 19, 90°, Box
1942820000	SC 3.81/19/90F3.2SN SW	PCB plug-in connector, Male connectors, Soldered connection, Pitch: 3.81 mm, No. of poles: 19, 90°, Box

1942720000	SC 3.81/19/90F3.2SN GN	PCB plug-in connector, Male connectors, Soldered connection, Pitch: 3.81 mm, No. of poles: 19, 90°, Box
1942630000	SC 3.81/20/90F3.2SN OR	PCB plug-in connector, Male connectors, Soldered connection, Pitch: 3.81 mm, No. of poles: 20, 90°, Box
1942830000	SC 3.81/20/90F3.2SN SW	PCB plug-in connector, Male connectors, Soldered connection, Pitch: 3.81 mm, No. of poles: 20, 90°, Box
1942730000	SC 3.81/20/90F3.2SN GN	PCB plug-in connector, Male connectors, Soldered connection, Pitch: 3.81 mm, No. of poles: 20, 90°, Box