

## Excellent Integrated System Limited

Stocking Distributor

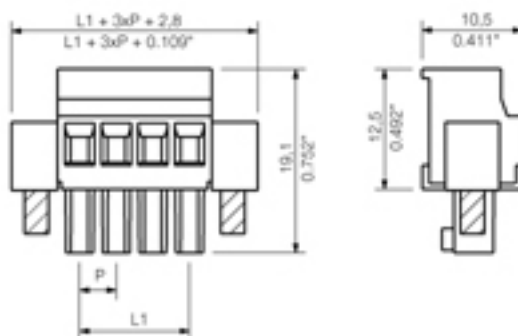
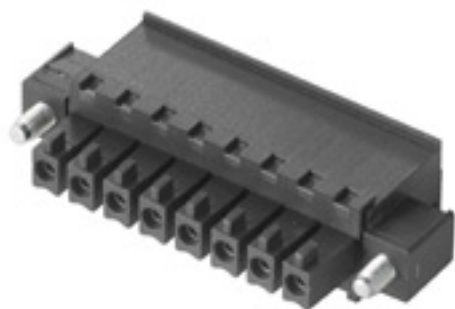
Click to view price, real time Inventory, Delivery & Lifecycle Information:

[Weidmüller](#)  
[1799210000](#)

For any questions, you can email us directly:

[sales@integrated-circuit.com](mailto:sales@integrated-circuit.com)

Product catalogue | PCB connection systems | PCB plug-in connectors | Pitch 3.81 mm (0.150 inch) | Socket connectors, screw clamp connection, pitch 3.81 | BCZ 3.81/90/270 | BCZ 3.81/270F



#### General ordering data

Order No.	1799210000
Part designation	BCZ 3.81/6/270F SN GN
Version	PCB plug-in connector, Female connectors, Clamping yoke connection, Clamping range, max.: 1.5 mm <sup>2</sup> , Pitch: 3.81 mm, No. of poles: 6, 270°, Box
EAN	4032248244102
Qty.	50 pc(s).

#### System parameters

Conductor connection system	Clamping yoke connection
Outgoing direction of conductor	270°
Pitch	3.81 mm
Pitch in inch	0.15 inch
No. of poles	6
No. of rows	1
Screwdriver blade	0.4 x 2.5
Screwdriver blade standard	DIN 5264
Tightening torque, min.	0.2
Tightening torque, max.	0.25 Nm
Clamping screw	M 2
Stripping length	7 mm
L1 in mm	19.05 mm
L1 in inch	0.75 inch
Electric shock protection to DIN VDE 0470	IP 20
Electric shock protection to DIN VDE 0470	Safe from finger touch

#### Material data

Insulating material	PA GF
Colour	Pale green
colour chart	Similar to RAL 6021
Insulating material group	II
Flammability class UL 94	V-0
CTI	>= 475

Product catalogue | PCB connection systems | PCB plug-in connectors | Pitch 3.81 mm (0.150 inch) | Socket connectors, screw clamp connection, pitch 3.81 | BCZ 3.81/90/270 | BCZ 3.81/270F

**Material data**

Contact base material	Copper alloy
Contact surface	tinned

**Connectable conductors**

Clamping range, min.	0.08 mm <sup>2</sup>
Clamping range, max.	1.5 mm <sup>2</sup>
AWG, min.	28
AWG, max.	16
Solid, min. H05(07) V-U	0.2 mm <sup>2</sup>
Solid, max. H05(07) V-U	1.5 mm <sup>2</sup>
Flexible, min. H05(07) V-K	0.2 mm <sup>2</sup>
Flexible, max. H05(07) V-K	1.5 mm <sup>2</sup>
With wire end ferrule, acc. to DIN 46 228/1, min.	0.2 mm <sup>2</sup>
With wire end ferrule, acc. to DIN 46 228/1, max.	1.5 mm <sup>2</sup>
w. plastic collar ferrule, DIN 46228 pt 4, min.	0.2 mm <sup>2</sup>
w. plastic collar ferrule, DIN 46228 pt 4, max.	1.5 mm <sup>2</sup>
Gauge to EN 60999 a x b; ø	2.4 mm x 1.5 mm ; 2.4 mm

**DIN IEC rating data**

Rated current, min. No. pins (Tu=20°C)	17.5 A
Rated current, max. No. pins (Tu=20°C)	15.9 A
Rated current, min. No. pins (Tu=40°C)	17.5 A
Rated current, max. No. pins (Tu=40°C)	14.1 A
Rated voltage for overvoltage class/pollution severity II/2	320 V
Rated voltage for overvoltage class/pollution severity III/2	160 V
Rated voltage for overvoltage class/pollution severity III/3	160 V
Rated impulse withstand voltage for overvoltage class/pollution severity II/2	2.5 kV
Rated impulse withstand voltage for overvoltage class/pollution severity III/2	2.5 kV
Rated impulse withstand voltage for overvoltage class/pollution severity III/3	2.5 kV
Short-time withstand current resistance	3 x 1s with 76 A

**CSA rating data**

Rated voltage (Use group D)	300 V
Rated current (Use group D)	10 A
AWG conductor (field wiring), min.	28
AWG conductor (field wiring), max.	16

**UL 1059 rating data**

Rated voltage (Use group D)	300 V
Rated current (Use group D)	10 A
AWG conductor, min.	28
AWG conductor, max.	16

**Approvals**

Approvals institutes


**Classifications**

ETIM 2.0	NK
ETIM 3.0	EC001284
eClass 4.1	27-26-07-01
eClass 5.0	27-26-07-01
eClass 5.1	27-26-07-04

**Similar products**

Order No.	Part designation	Version
1940460000	BCZ 3.81/2/270F SN OR	PCB plug-in connector, Female connectors, Clamping yoke connection, Clamping range, max.: 1.5 mm <sup>2</sup> , Pitch: 3.81 mm, No. of poles: 2, 270°, Box
1799100000	BCZ 3.81/2/270F SN SW	PCB plug-in connector, Female connectors, Clamping yoke connection, Clamping range, max.: 1.5 mm <sup>2</sup> , Pitch: 3.81 mm, No. of poles: 2, 270°, Box
1799170000	BCZ 3.81/2/270F SN GN	PCB plug-in connector, Female connectors, Clamping yoke connection, Clamping range, max.: 1.5 mm <sup>2</sup> , Pitch: 3.81 mm, No. of poles: 2, 270°, Box
1940470000	BCZ 3.81/3/270F SN OR	PCB plug-in connector, Female connectors, Clamping yoke connection, Clamping range, max.: 1.5 mm <sup>2</sup> , Pitch: 3.81 mm, No. of poles: 3, 270°, Box
1798180000	BCZ 3.81/3/270F SN SW	PCB plug-in connector, Female connectors, Clamping yoke connection, Clamping range, max.: 1.5 mm <sup>2</sup> , Pitch: 3.81 mm, No. of poles: 3, 270°, Box
1799180000	BCZ 3.81/3/270F SN GN	PCB plug-in connector, Female connectors, Clamping yoke connection, Clamping range, max.: 1.5 mm <sup>2</sup> , Pitch: 3.81 mm, No. of poles: 3, 270°, Box
1940480000	BCZ 3.81/4/270F SN OR	PCB plug-in connector, Female connectors, Clamping yoke connection, Clamping range, max.: 1.5 mm <sup>2</sup> , Pitch: 3.81 mm, No. of poles: 4, 270°, Box
1799110000	BCZ 3.81/4/270F SN SW	PCB plug-in connector, Female connectors, Clamping yoke connection, Clamping range, max.: 1.5 mm <sup>2</sup> , Pitch: 3.81 mm, No. of poles: 4, 270°, Box
1799190000	BCZ 3.81/4/270F SN GN	PCB plug-in connector, Female connectors, Clamping yoke connection, Clamping range, max.: 1.5 mm <sup>2</sup> , Pitch: 3.81 mm, No. of poles: 4, 270°, Box
1940490000	BCZ 3.81/5/270F SN OR	PCB plug-in connector, Female connectors, Clamping yoke connection, Clamping range, max.: 1.5 mm <sup>2</sup> , Pitch: 3.81 mm, No. of poles: 5, 270°, Box
1799120000	BCZ 3.81/5/270F SN SW	PCB plug-in connector, Female connectors, Clamping yoke connection, Clamping range, max.: 1.5 mm <sup>2</sup> , Pitch: 3.81 mm, No. of poles: 5, 270°, Box

Product catalogue | PCB connection systems | PCB plug-in connectors | Pitch 3.81 mm (0.150 inch) | Socket connectors, screw clamp connection, pitch 3.81 | BCZ 3.81/90/270 | BCZ 3.81/270F

1799200000	BCZ 3.81/5/270F SN GN	PCB plug-in connector, Female connectors, Clamping yoke connection, Clamping range, max.: 1.5 mm <sup>2</sup> , Pitch: 3.81 mm, No. of poles: 5, 270°, Box
1940500000	BCZ 3.81/6/270F SN OR	PCB plug-in connector, Female connectors, Clamping yoke connection, Clamping range, max.: 1.5 mm <sup>2</sup> , Pitch: 3.81 mm, No. of poles: 6, 270°, Box
1799130000	BCZ 3.81/6/270F SN SW	PCB plug-in connector, Female connectors, Clamping yoke connection, Clamping range, max.: 1.5 mm <sup>2</sup> , Pitch: 3.81 mm, No. of poles: 6, 270°, Box
1940510000	BCZ 3.81/7/270F SN OR	PCB plug-in connector, Female connectors, Clamping yoke connection, Clamping range, max.: 1.5 mm <sup>2</sup> , Pitch: 3.81 mm, No. of poles: 7, 270°, Box
1940670000	BCZ 3.81/7/270F SN SW	PCB plug-in connector, Female connectors, Clamping yoke connection, Clamping range, max.: 1.5 mm <sup>2</sup> , Pitch: 3.81 mm, No. of poles: 7, 270°, Box
1940610000	BCZ 3.81/7/270F SN GN	PCB plug-in connector, Female connectors, Clamping yoke connection, Clamping range, max.: 1.5 mm <sup>2</sup> , Pitch: 3.81 mm, No. of poles: 7, 270°, Box
1940520000	BCZ 3.81/8/270F SN OR	PCB plug-in connector, Female connectors, Clamping yoke connection, Clamping range, max.: 1.5 mm <sup>2</sup> , Pitch: 3.81 mm, No. of poles: 8, 270°, Box
1798190000	BCZ 3.81/8/270F SN SW	PCB plug-in connector, Female connectors, Clamping yoke connection, Clamping range, max.: 1.5 mm <sup>2</sup> , Pitch: 3.81 mm, No. of poles: 8, 270°, Box
1799220000	BCZ 3.81/8/270F SN GN	PCB plug-in connector, Female connectors, Clamping yoke connection, Clamping range, max.: 1.5 mm <sup>2</sup> , Pitch: 3.81 mm, No. of poles: 8, 270°, Box
1940530000	BCZ 3.81/9/270F SN OR	PCB plug-in connector, Female connectors, Clamping yoke connection, Clamping range, max.: 1.5 mm <sup>2</sup> , Pitch: 3.81 mm, No. of poles: 9, 270°, Box
1940680000	BCZ 3.81/9/270F SN SW	PCB plug-in connector, Female connectors, Clamping yoke connection, Clamping range, max.: 1.5 mm <sup>2</sup> , Pitch: 3.81 mm, No. of poles: 9, 270°, Box
1940620000	BCZ 3.81/9/270F SN GN	PCB plug-in connector, Female connectors, Clamping yoke connection, Clamping range, max.: 1.5 mm <sup>2</sup> , Pitch: 3.81 mm, No. of poles: 9, 270°, Box
1940540000	BCZ 3.81/10/270F SN OR	PCB plug-in connector, Female connectors, Clamping yoke connection, Clamping range, max.: 1.5 mm <sup>2</sup> , Pitch: 3.81 mm, No. of poles: 10, 270°, Box
1799140000	BCZ 3.81/10/270F SN SW	PCB plug-in connector, Female connectors, Clamping yoke connection, Clamping range, max.: 1.5 mm <sup>2</sup> , Pitch: 3.81 mm, No. of poles: 10, 270°, Box
1799230000	BCZ 3.81/10/270F SN GN	PCB plug-in connector, Female connectors, Clamping yoke connection, Clamping range, max.: 1.5 mm <sup>2</sup> , Pitch: 3.81 mm, No. of poles: 10, 270°, Box
1940550000	BCZ 3.81/11/270F SN OR	PCB plug-in connector, Female connectors, Clamping yoke connection, Clamping range, max.: 1.5 mm <sup>2</sup> , Pitch: 3.81 mm, No. of poles: 11, 270°, Box
1940690000	BCZ 3.81/11/270F SN SW	PCB plug-in connector, Female connectors, Clamping yoke connection, Clamping range, max.: 1.5 mm <sup>2</sup> , Pitch: 3.81 mm, No. of poles: 11, 270°, Box

Product catalogue | PCB connection systems | PCB plug-in connectors | Pitch 3.81 mm (0.150 inch) | Socket connectors, screw clamp connection, pitch 3.81 | BCZ 3.81/90/270 | BCZ 3.81/270F

1940630000	BCZ 3.81/11/270F SN GN	PCB plug-in connector, Female connectors, Clamping yoke connection, Clamping range, max.: 1.5 mm <sup>2</sup> , Pitch: 3.81 mm, No. of poles: 11, 270°, Box
1940560000	BCZ 3.81/12/270F SN OR	PCB plug-in connector, Female connectors, Clamping yoke connection, Clamping range, max.: 1.5 mm <sup>2</sup> , Pitch: 3.81 mm, No. of poles: 12, 270°, Box
1799150000	BCZ 3.81/12/270F SN SW	PCB plug-in connector, Female connectors, Clamping yoke connection, Clamping range, max.: 1.5 mm <sup>2</sup> , Pitch: 3.81 mm, No. of poles: 12, 270°, Box
1799240000	BCZ 3.81/12/270F SN GN	PCB plug-in connector, Female connectors, Clamping yoke connection, Clamping range, max.: 1.5 mm <sup>2</sup> , Pitch: 3.81 mm, No. of poles: 12, 270°, Box
1940570000	BCZ 3.81/13/270F SN OR	PCB plug-in connector, Female connectors, Clamping yoke connection, Clamping range, max.: 1.5 mm <sup>2</sup> , Pitch: 3.81 mm, No. of poles: 13, 270°, Box
1940700000	BCZ 3.81/13/270F SN SW	PCB plug-in connector, Female connectors, Clamping yoke connection, Clamping range, max.: 1.5 mm <sup>2</sup> , Pitch: 3.81 mm, No. of poles: 13, 270°, Box
1940640000	BCZ 3.81/13/270F SN GN	PCB plug-in connector, Female connectors, Clamping yoke connection, Clamping range, max.: 1.5 mm <sup>2</sup> , Pitch: 3.81 mm, No. of poles: 13, 270°, Box
1940580000	BCZ 3.81/14/270F SN OR	PCB plug-in connector, Female connectors, Clamping yoke connection, Clamping range, max.: 1.5 mm <sup>2</sup> , Pitch: 3.81 mm, No. of poles: 14, 270°, Box
1940710000	BCZ 3.81/14/270F SN SW	PCB plug-in connector, Female connectors, Clamping yoke connection, Clamping range, max.: 1.5 mm <sup>2</sup> , Pitch: 3.81 mm, No. of poles: 14, 270°, Box
1940650000	BCZ 3.81/14/270F SN GN	PCB plug-in connector, Female connectors, Clamping yoke connection, Clamping range, max.: 1.5 mm <sup>2</sup> , Pitch: 3.81 mm, No. of poles: 14, 270°, Box
1940590000	BCZ 3.81/15/270F SN OR	PCB plug-in connector, Female connectors, Clamping yoke connection, Clamping range, max.: 1.5 mm <sup>2</sup> , Pitch: 3.81 mm, No. of poles: 15, 270°, Box
1940720000	BCZ 3.81/15/270F SN SW	PCB plug-in connector, Female connectors, Clamping yoke connection, Clamping range, max.: 1.5 mm <sup>2</sup> , Pitch: 3.81 mm, No. of poles: 15, 270°, Box
1940660000	BCZ 3.81/15/270F SN GN	PCB plug-in connector, Female connectors, Clamping yoke connection, Clamping range, max.: 1.5 mm <sup>2</sup> , Pitch: 3.81 mm, No. of poles: 15, 270°, Box
1940600000	BCZ 3.81/16/270F SN OR	PCB plug-in connector, Female connectors, Clamping yoke connection, Clamping range, max.: 1.5 mm <sup>2</sup> , Pitch: 3.81 mm, No. of poles: 16, 270°, Box
1799160000	BCZ 3.81/16/270F SN SW	PCB plug-in connector, Female connectors, Clamping yoke connection, Clamping range, max.: 1.5 mm <sup>2</sup> , Pitch: 3.81 mm, No. of poles: 16, 270°, Box
1799250000	BCZ 3.81/16/270F SN GN	PCB plug-in connector, Female connectors, Clamping yoke connection, Clamping range, max.: 1.5 mm <sup>2</sup> , Pitch: 3.81 mm, No. of poles: 16, 270°, Box