

Excellent Integrated System Limited

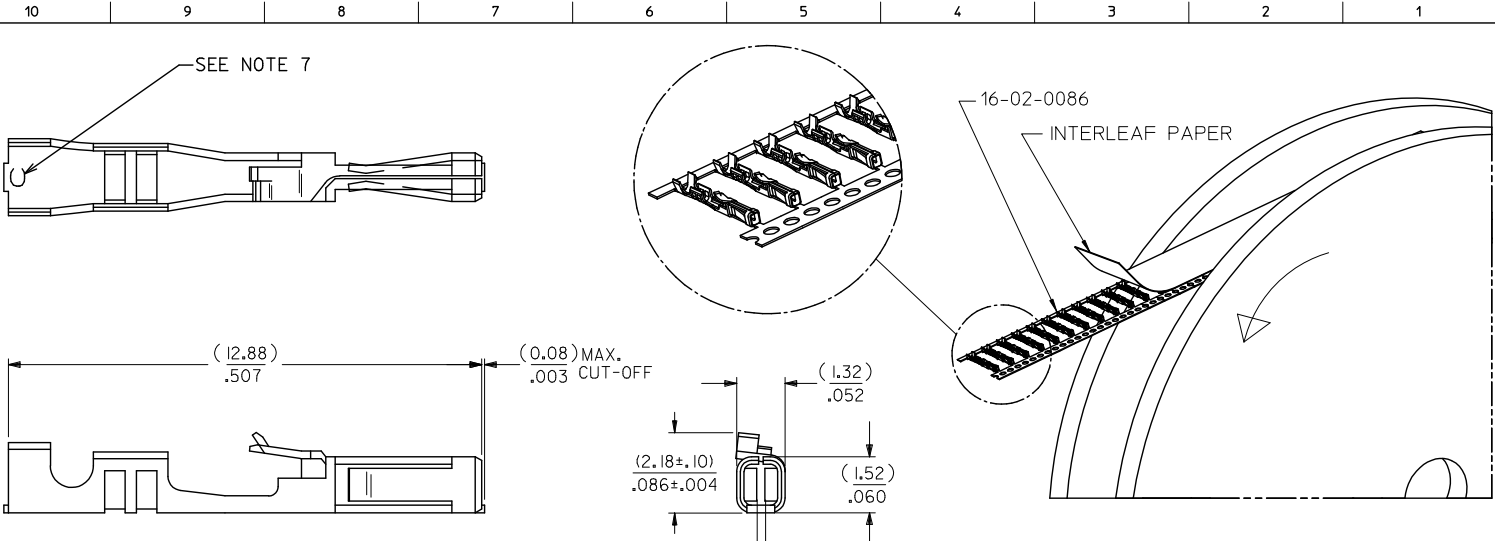
Stocking Distributor

Click to view price, real time Inventory, Delivery & Lifecycle Information:

[Molex Connector Corporation](#)
[0016020086](#)

For any questions, you can email us directly:

sales@integrated-circuit.com



- NOTES:
1. TERMINAL TO BE USED IN HOUSING 70066-**** AND 70450-****.
 2. REFER TO PRODUCT SPECIFICATION PS-70058.
 3. REFER TO MOLEX OPERATIONS AND SERVICE MANUAL FOR CRIMP DETAILS.
 4. TERMINAL TO BE USED WITH (0.64)/.025 SQUARE PINS.
 5. TERMINAL TO BE USED WITH 22-24 AWG STRANDED WIRE WITH (1.63)/.064 MAXIMUM DIAMETER INSULATION.
 6. TERMINALS SUPPLIED IN REEL FORM.
 7. CRIMP SIZE INDICATOR C=22-24 AWG
- PLATING:
.000150 MINIMUM TIN PLATE IN SELECT AREA,
OVER NICKEL PLATE OVERALL.

REV	DESCRIPTION	QUALITY SYMBOLS	GENERAL TOLERANCES (UNLESS SPECIFIED)		DRAWN BY	DATE	TITLE	SCALE	DESIGN UNITS	THIRD ANGLE PROJECTION
			mm	INCH						
4	PLACES	±	---	±	---	RWHIPPLE	2013/06/11	10:1	INCH	molex TERMINAL - BOX/CRIMP FOR 22-24 AWG ON A REEL SD-70058-0022
3	PLACES	±	---	±	0.005	CHECKED BY	DATE			
2	PLACES	±	0.13	±	0.01	JAS	1988/02/03			
1	PLACE	±	0.25	±	---	APPROVED BY	DATE			
0	PLACE	±	---	±	---	SMILLER	2013/07/09			
			ANGULAR ±1/2°		MATERIAL NO.		DOCUMENT NO.		SHEET NO.	
			DRAFT WHERE APPLICABLE MUST REMAIN WITHIN DIMENSIONS		16-02-0086		SD-70058-0022		1 OF 1	
THIS DRAWING CONTAINS INFORMATION THAT IS PROPRIETARY TO MOLEX INCORPORATED AND SHOULD NOT BE USED WITHOUT WRITTEN PERMISSION										