

Excellent Integrated System Limited

Stocking Distributor

Click to view price, real time Inventory, Delivery & Lifecycle Information:

[Molex Connector Corporation](#)
[0016020107](#)

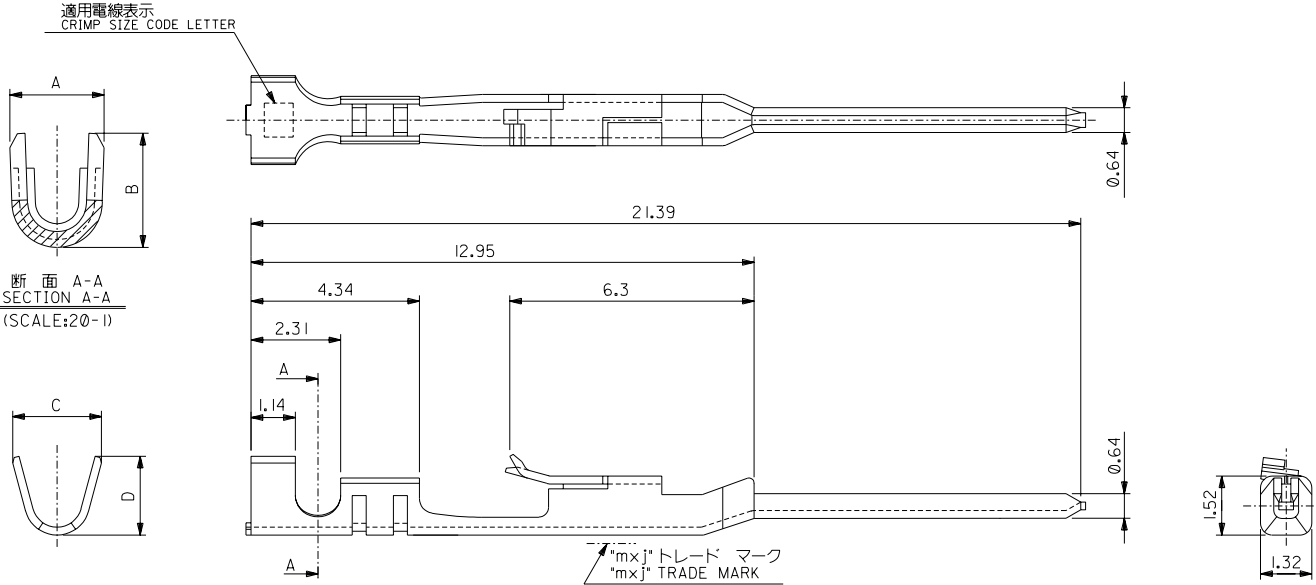
For any questions, you can email us directly:

sales@integrated-circuit.com

ENC. NO. 0-04
SD-70021-0-21

EDP NO. #

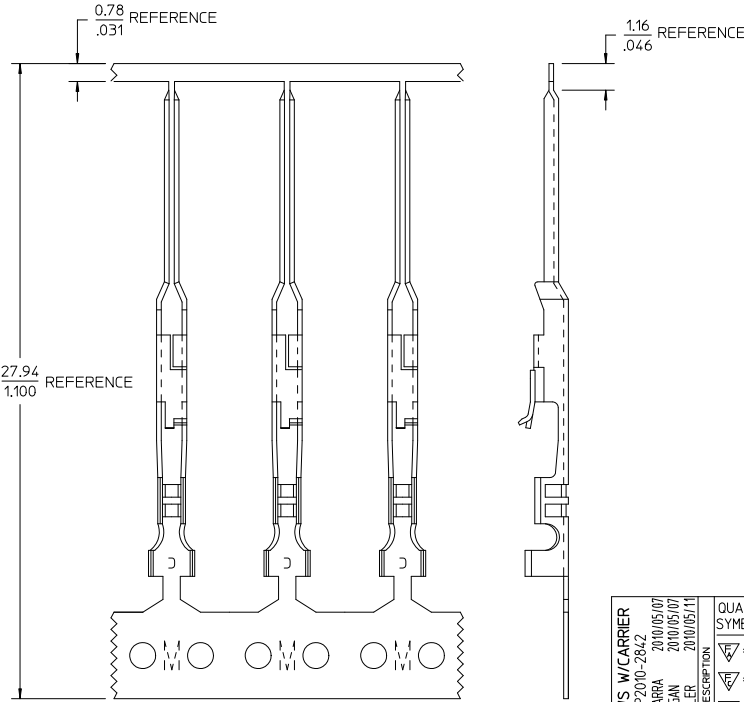
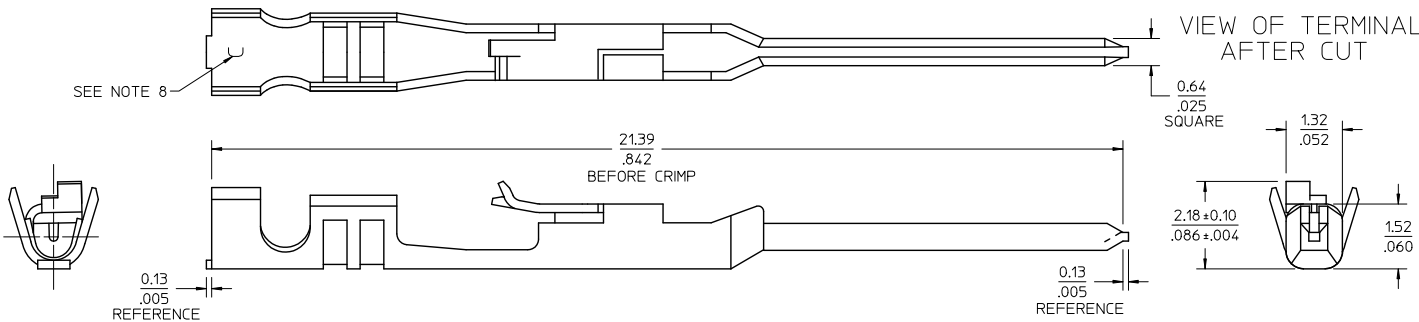
1MM DIMENSIONS IN METRIC DO NOT SCALE DRAWING



- 注記:
NOTES:
- 適合ハウジング: 70066-****, 70107-****
APPLICABLE HOUSING: 70066-****, 70107-****
 - 仕上げ ニッケル下地、錫メッキ
FINISH TIN OVER NICKEL PLATING

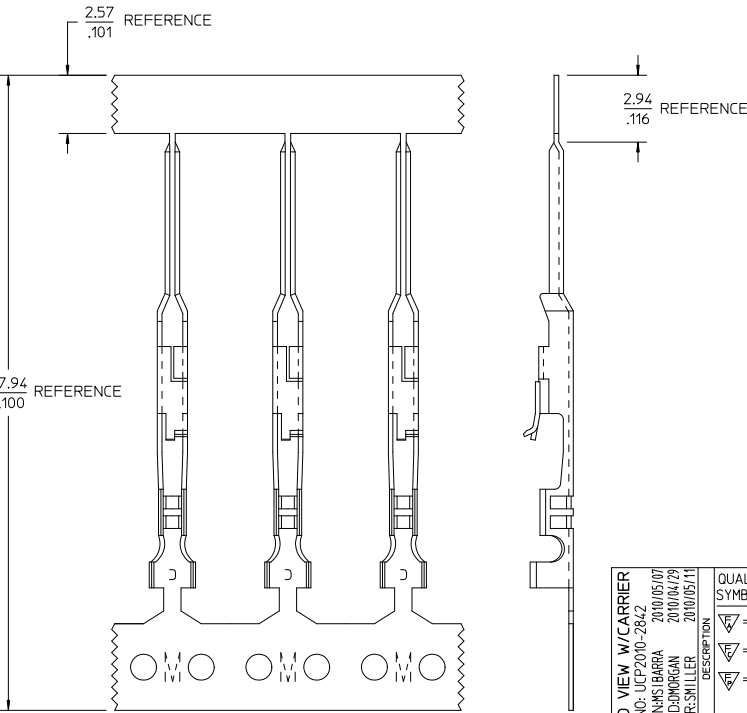
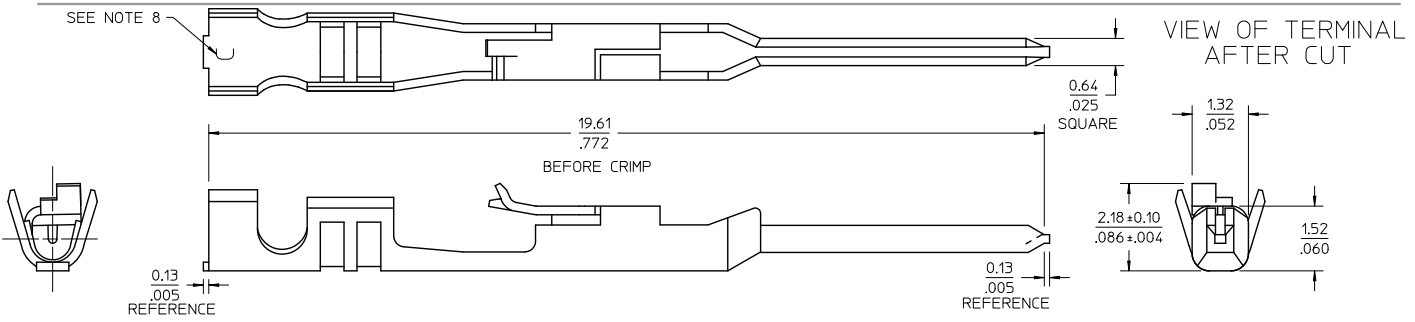
1.91	2.1	1.47	1.22	A	ø 1.6 MAX.	AWG#24-#30	バラ状 LOOSE	70021-0204
							AWG#22-#24	連鎖状 CHAIN
1.91	2.1	1.65	1.84	C			バラ状 LOOSE	70021-0221
							連鎖状 CHAIN	70021-0021
D	C	B	A	適用電線表示 CRIMP SIZE CODE LETTER	被覆外径 INS. RANGE	適用電線範囲 WIRE RANGE	端子形状 FORM	MATERIAL No.
				材料 MATERIAL 磷青銅 PHOSPHOR BRONZE t 0.203	仕上げ FINISH 注記参照 SEE NOTES			MOLEX-JAPAN CO.,LTD. 日本モレックス株式会社
				適用電線範囲 WIRE RANGE 表参照 SEE CHART				EDP. NO. #
				被覆外径 INS. RANGE 表参照 SEE CHART				ENG. NO. SD-70021-0-04 0-21
				DRAWN BY CHK'D BY DATE	APPR'D BY DATE			REV B
角度 ANGLE +3°				B 変更 REVISED (2004-05-19)	MS 04/05/3	TITLE 名称 SL MALE CRIMP TERMINAL -LEAD FREE-		
30°以上 OVER +0.3				A 変更 REVISED (120159)	MS 31/5/20			
10°以上 30°未満 UNDER +0.25				0 新編作成 RELEASED (1200110)	MS 30/4/6			
10°未満 UNDER +0.2				記号 LTR REVISION RECORD	DR. CHK. DATE			
一般公差 GENERAL TOLERANCES				REVISE ONLY ON CAD SYSTEM				

THIS DRAWING CONTAINS INFORMATION THAT IS PROPRIETARY TO MOLEX/JAPAN AND SHOULD NOT BE USED WITHOUT WRITTEN PERMISSION
本図面は日本モレックス（株）の所有する情報を含むもので 当社の許可なく複製を禁止する。 MXJ-8



- NOTES:
1. MATERIAL: PHOSPHOR BRONZE, 0.20/.008 THICK
 2. FINISH: 3.81 MICROMETERS/150 MICROINCHES TIN OVER NICKEL UNDERPLATE OVERALL
 3. PRODUCT SPECIFICATION: PS-70021
 4. PACKAGING: PARTS SUPPLIED IN REEL FORM
 5. TERMINAL FOR USE WITH: 70066-***** & 70107-***** HOUSINGS
 6. TERMINAL TO BE USED WITH: 22-24 AWG STRANDED WIRE WITH .064 DIAMETER MAXIMUM INSULATION
 7. REFER TO MOLEX OPERATIONAL AND SERVICE MANUAL FOR DETAILS
 8. CRIMP SIZE INDICATOR: C=22-24 AWG

ADD VIEWS W/CARRIER EC NO: UCP2010-2842 DRAWN BY: MSIBARRA 2010/05/07 CHKD BY: JORGAN 2010/05/07 APPR: MILLER 2010/05/11	QUALITY SYMBOLS ▽=0 ▽=0 ▽=0	GENERAL TOLERANCES (UNLESS SPECIFIED)		DIMENSION STYLE IN/MM		SCALE	DESIGN UNITS INCH	THIRD ANGLE PROJECTION
		mm	INCH	DRAWN BY MSIBARRA	DATE 2010/05/07	TITLE TERMINAL, MALE CRIMP		
		4 PLACES ± .005	± .005	CHECKED BY MJM	DATE 1986/10/30	MOLEX INCORPORATED		
		3 PLACES ± .013	± .01	APPROVED BY MILLER	DATE 2010/05/11			
		2 PLACES ± .025	± .01	MATERIAL NO. 16-02-0107	DOCUMENT NO. SD-70021-0021	SHEET NO. 1 OF 1		
		1 PLACE ± 0.25	± .01	DRAFT WHERE APPLICABLE MUST REMAIN WITHIN DIMENSIONS				
		ANGULAR ± 1/2°		THIS DRAWING CONTAINS INFORMATION THAT IS PROPRIETARY TO MOLEX INCORPORATED AND SHOULD NOT BE USED WITHOUT WRITTEN PERMISSION				



- NOTES:
1. MATERIAL: PHOSPHOR BRONZE, 0.20/.008 THICK
 2. FINISH: 3.81 MICROMETERS/150 MICROINCHES TIN OVER NICKEL UNDERPLATE OVERALL
 3. PRODUCT SPECIFICATION: PS-70021
 4. PACKAGING: PARTS SUPPLIED IN REEL FORM
 5. TERMINAL FOR USE WITH: 70066-**** & 70107-**** HOUSINGS
 6. TERMINAL TO BE USED WITH: 22-24 AWG STRANDED WIRE WITH .064 DIAMETER MAXIMUM INSULATION
 7. REFER TO MOLEX OPERATIONAL AND SERVICE MANUAL FOR DETAILS
 8. CRIMP SIZE INDICATOR: C=22-24 AWG

ADD VIEW W/CARRIER EC NO: UCP2010-2842 DRAWN BY: MSIBARRA 2010/05/07 CHECKED BY: DMORGAN 2010/04/29 APPROVED BY: SMILLER 2010/05/11	QUALITY SYMBOLS ∇=0 ∇=0 ∇=0	GENERAL TOLERANCES (UNLESS SPECIFIED) mm INCH		DIMENSION STYLE MM/IN		SCALE 15:1	DESIGN UNITS INCH	THIRD ANGLE PROJECTION
		4 PLACES ± --- ± --- 3 PLACES ± --- ± .010 2 PLACES ± 0.25 ± .015 1 PLACE ± 0.35 ± --- ANGULAR ± 1/2°	DRAWN BY DATE MSIBARRA 2010/04/29 CHECKED BY DATE DMORGAN 2010/04/29 APPROVED BY DATE SMILLER 2010/05/11	TITLE TERMINAL, MALE CRIMP		MATERIAL NO. 70021-1021	DOCUMENT NO. SD-70021-1021	
DRAFT WHERE APPLICABLE MUST REMAIN WITHIN DIMENSIONS		THIS DRAWING CONTAINS INFORMATION THAT IS PROPRIETARY TO MOLEX INCORPORATED AND SHOULD NOT BE USED WITHOUT WRITTEN PERMISSION						