

Excellent Integrated System Limited

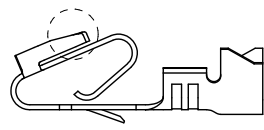
Stocking Distributor

Click to view price, real time Inventory, Delivery & Lifecycle Information:

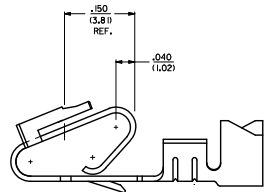
[Molex Connector Corporation](#)
[0008500187](#)

For any questions, you can email us directly:

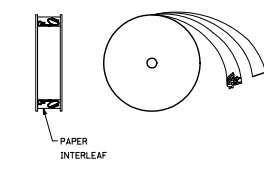
sales@integrated-circuit.com



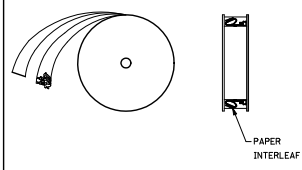
ALTERNATE GEOMETRY
SEE NOTE 10



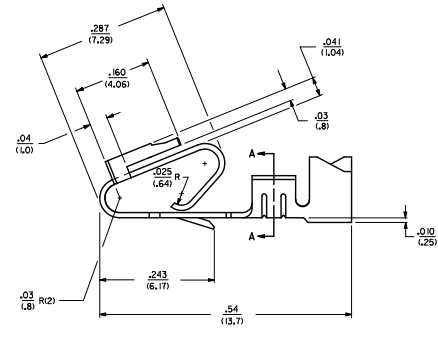
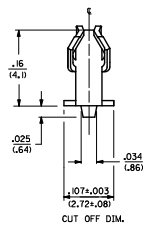
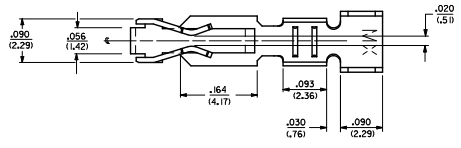
SELECTIVE PLATING
LOCATION



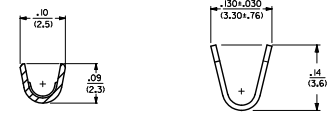
WINDING DETAIL 'A'



WINDING DETAIL 'B'



- NOTES:
1. MATERIAL: SEE LEGEND
 2. FINISH:
909 - OVERALL HOT TIN DIF. .000100/(0.00254) MIN.
154 - OVERALL TIN: .000100/(0.00254) MIN. OVER
.000050/(0.00127) MIN. NICKEL.
555 - SELECT HARD GOLD: .000030/(0.00076) MIN.
OVERALL NICKEL: .000030/(0.00076) MIN.
558 - SELECT HARD GOLD: .000030/(0.00076) MIN.
OVERALL NICKEL: .000050/(0.00127) MIN.
OVERALL HARD GOLD FLASH: .000002/(0.00005) MIN.
561 - SELECT HARD GOLD: .000030/(0.00076) MIN.
OVERALL NICKEL: .000050/(0.00127) MIN.
 3. PRODUCT SPECIFICATIONS: PS-40-02
 4. PACKAGING SPECIFICATION: CHAIN FORM: SEE PK-6838-001
LOOSE FORM: SEE PK-2759-001
 5. TERMINAL FOR USE IN HOUSING SERIES 6442 AND 41995.
 6. SEE 7258 SERIES FOR THIS PART WITH CRAMP FOR 22-26 AWG. WIRE.
 7. CRAMP FOR 18 TO 20 GA. WIRE WITH MAX. INSULATION DIA. OF .100/(2.54).
STRIP LENGTH OF: .225/(5.71) / (3.18/2.54)
 8. DIMENSIONS GIVEN ACROSS CENTERLINES ARE SYMMETRICAL ABOUT THOSE CENTERLINES WITHIN HALF THE TOTAL TOLERANCE.
 9. THIS PART CONFORMS TO CLASS B REQUIREMENTS OF COSMETIC SPECIFICATION PS-45499-002.
 10. ALTERNATE GEOMETRY PRESENT ON SOME PART NUMBERS. SEE SHEET 2.



SECTION A-A

- LEGEND: 6838
- WINDING
 - A= PER DETAIL A
 - BLANK= PER DETAIL B
 - FORM
 - BLANK= CHAIN
 - L= LOOSE
 - PLATING
- SEE NOTE 2
- MATERIAL:
L277/0106 THK
BLANK=BRASS
A=PHOS BRONZE

107 TO 154 PLTG ECN NO. LCP202-1871 DRAWING FROM 2017/01/04 CHECKED BY 2017/01/05 APPROVED BY 2017/01/05 AR	QUALITY SYMBOLS	GENERAL TOLERANCES (UNLESS SPECIFIED)	DIMENSION STYLE	SCALE	DESIGN UNITS	THIRD ANGLE PROJECTION	
	∇=0 ∇=0 ∇=0	4 PLACES ±--- ±--- 3 PLACES ±--- ±.010 2 PLACES ±0.25 ±.015 1 PLACE ±0.36 ±--- ANGULAR ±1/2°	mm INCH --- --- --- --- --- --- --- ---	DRAWN BY GUZIK CHECKED BY PATEL APPROVED BY LENZ	DATE 11/15/89 DATE 11/15/89 DATE 11/15/89	INCH ---	TRIFURCON TERMINAL CRIMP TYPE, .156 CENTERS 18 TO 20 AWG WIRE
	DRAFT WHERE APPLICABLE MUST REMAIN WITHIN DIMENSIONS	MATERIAL NO. SEE CHART DOCUMENT NO. SD-6838	MOLEX INCORPORATED	SHEET NO. 1 OF 2			
	THIS DRAWING CONTAINS INFORMATION THAT IS PROPRIETARY TO MOLEX INCORPORATED AND SHOULD NOT BE USED WITHOUT WRITTEN PERMISSION						

6838-(*)**			6838-A(*)**		
PART NO.	ENG. NO.		PART NO.	ENG. NO.	
08-50-0187	6838-(P909)	SEE NOTE 1	08-58-0187	6838-A(P558)	
08-50-0189	6838-(P909)L	SEE NOTE 1	08-58-0189	6838-A(P558)L	
08-50-0275	6838-(P909)-A		08-52-0112	6838-A(P909)	SEE NOTE 1
			08-52-0113	6838-A(P909)L	SEE NOTE 1
			08-50-0024	6838-A(154)	
			08-50-0251	6838-A(154)L	
			08-58-0105	6838-A(P555)	
			08-58-0106	6838-A(P555)L	
			08-58-0110	6838-A(P561)	SEE NOTE 1
			08-58-0111	6838-A(P561)L	SEE NOTE 1
			08-58-0118	6838-A(561)	
			08-58-0119	6838-A(561)L	

NOTES:

- 1. PART MANUFACTURED WITH ALTERNATE GEOMETRY. SEE SHEET 1.

SEE SHEET 1 EC NO. 027202-821 DRAWING NO. 20/01/04 CHECKED BY 20/01/05 APPROVED BY 20/01/05 AR	QUALITY SYMBOLS	GENERAL TOLERANCES (UNLESS SPECIFIED)	DIMENSION STYLE	SCALE	DESIGN UNITS	THIRD ANGLE PROJECTION															
	$\nabla=0$ $\nabla=0$ $\nabla=0$	<table border="1"> <tr> <th></th> <th>mm</th> <th>INCH</th> </tr> <tr> <td>4 PLACES</td> <td>+ .000</td> <td>+ .000</td> </tr> <tr> <td>3 PLACES</td> <td>+ .000</td> <td>+ .000</td> </tr> <tr> <td>2 PLACES</td> <td>+ .000</td> <td>+ .000</td> </tr> <tr> <td>1 PLACE</td> <td>+ .000</td> <td>+ .000</td> </tr> </table>		mm	INCH	4 PLACES	+ .000	+ .000	3 PLACES	+ .000	+ .000	2 PLACES	+ .000	+ .000	1 PLACE	+ .000	+ .000	IN/MM	---	INCH	
		mm	INCH																		
	4 PLACES	+ .000	+ .000																		
3 PLACES	+ .000	+ .000																			
2 PLACES	+ .000	+ .000																			
1 PLACE	+ .000	+ .000																			
	ANGULAR ±1/2°																				
	DRAFT WHERE APPLICABLE MUST REMAIN WITHIN DIMENSIONS																				
			DRAWN BY GUZIK CHECKED BY PATEL APPROVED BY LENZ	DATE 11/15/89 DATE 11/15/89 DATE 11/15/89	TITLE TRIFURCON TERMINAL CRIMP TYPE .456 CENTERS 18 TO 20 AWG WIRE																
			MATERIAL NO. SEE CHART SIZE D		MOLEX INCORPORATED DOCUMENT NO. SD-6838	SHEET NO. 2 OF 2															
			THIS DRAWING CONTAINS INFORMATION THAT IS PROPRIETARY TO MOLEX INCORPORATED AND SHOULD NOT BE USED WITHOUT WRITTEN PERMISSION																		