

Excellent Integrated System Limited

Stocking Distributor

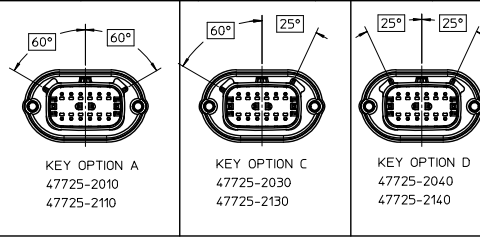
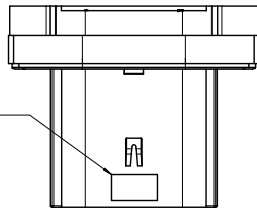
Click to view price, real time Inventory, Delivery & Lifecycle Information:

[Molex Connector Corporation](#)
[0477252010](#)

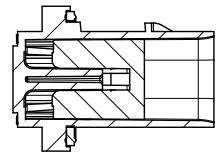
For any questions, you can email us directly:

sales@integrated-circuit.com

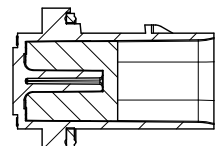
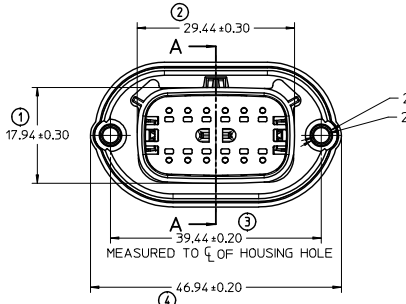
TRACEABILITY INFORMATION
LOCATION IN THIS AREA



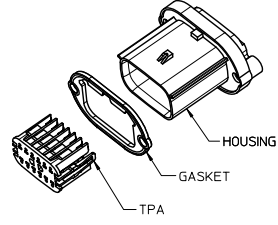
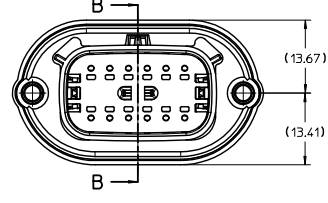
ASSY P/N	KEY OPTION	DESCRIPTION	COLOR
47725-2010	A	HOUSING	BLACK
		GASKET	BLACK
		TPA	NATURAL
47725-2030	C	HOUSING	DARK GRAY
		GASKET	BLACK
		TPA	NATURAL
47725-2040	D	HOUSING	STONE GRAY
		GASKET	BLACK
		TPA	NATURAL
47725-2110	A	HOUSING	BLACK
		GASKET	GREY
		TPA	NATURAL
47725-2130	C	HOUSING	DARK GRAY
		GASKET	GREY
		TPA	NATURAL
47725-2140	D	HOUSING	STONE GRAY
		GASKET	GREY
		TPA	NATURAL



SECTION A-A
(TPA SHOWN IN PRE-LOCK POSITION)
SEE NOTE 3



SECTION B-B
(TPA SHOWN IN FULL-LOCK POSITION)
FOR REFERENCE ONLY



INSPECTION NUMBER LOG
LAST NUMBER USED: 9
ADDED:
REMOVED:

- NOTES: UNLESS OTHERWISE SPECIFIED.
- SHALL CONFORM TO MOLEX PRODUCT SPECIFICATION: PS-47725-000
 - USAGE OF THE PRODUCT SHALL BE IN COMPLIANCE TO MOLEX APPLICATION SPECIFICATION: AS-47725-001
 - SHIPPED WITH GASKET AND TPA IN PRE-LOCK POSITION
 - FOR ESSENTIAL PARTS (TERMINALS, WIRES ETC.) AND INSTALLATION TO COMPLETE ASSEMBLY SEE MOLEX PRODUCT SPECIFICATION: PS-33472-000.
 - FOR TERMINAL SERVICING TOOL SEE MOLEX DOCUMENT: ATS-638131500, GM PART NUMBER J-38125-217
 - DESIGNED TO MATE WITH 12 WAY RECEPTACLE CONNECTOR ASSEMBLY PER SD-33472-121. FOR MATING CONNECTOR ASSEMBLY INFORMATION SEE MOLEX PRODUCT SPECIFICATION: PS-33472-000

ENTER DESCRIPTION EC NO: GC42010-0088 DRAWN: CDZHANG CHKD: JLOHMAN APPR: GLEE DATE: 2010/03/18 DATE: 2010/03/18 DATE: 2010/04/13	QUALITY SYMBOLS ▽=0 ▽=0 ▽=0	GENERAL TOLERANCES (UNLESS SPECIFIED)		DIMENSION STYLE MM ONLY	SCALE 2:1	DESIGN UNITS METRIC	THIRD ANGLE PROJECTION		
		4 PLACES ±--- ±--- 3 PLACES ±--- ±--- 2 PLACES ±--- ±--- 1 PLACE ±0.1 ±---	mm INCH	DRAWN BY CDZHANG	DATE 2010/03/18	TITLE GENERAL MX150 2X6 PANEL MOUNT CONNECTOR			
		ANGULAR ± 3 °		CHECKED BY JLOHMAN	DATE 2010/03/18	MOLEX INCORPORATED			
		DRAFT WHERE APPLICABLE MUST REMAIN WITHIN DIMENSIONS		APPROVED BY GGLEE	DATE 2010/04/13	MATERIAL NO. SEE CHART	DOCUMENT NO. SD-47725-210	SHEET NO. 1 OF 1	