

Excellent Integrated System Limited

Stocking Distributor

Click to view price, real time Inventory, Delivery & Lifecycle Information:

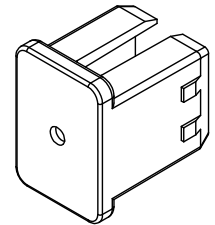
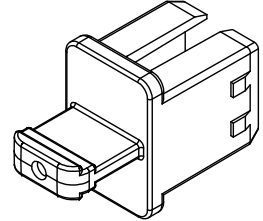
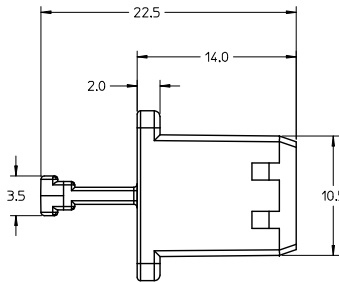
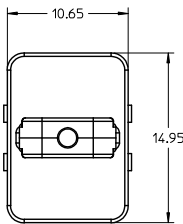
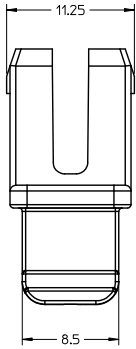
[Molex Connector Corporation](#)
[0768668806](#)

For any questions, you can email us directly:

sales@integrated-circuit.com

NOTES:

1. MATERIAL: PLATABLE GRADE LCP 30% GLASS FILLED
2. PLATING (MINIMUM): 3.8µM BRIGHT NICKEL OVER 2.54µM COPPER UNDERPLATE.
3. PLUG CAN BE USED WITH ALL MOLEX IPASS EXTERNAL CAGE ASSEMBLIES.
4. PART CONFORMS TO MOLEX COSMETIC SPECIFICATION PS-45499-002, SURFACES TO BE CLASS 'B'.



MATERIAL NO.	PLATED	DESCRIPTION
76866-8806	NO	DUST PLUG W/PULL TAB
76866-8816	YES	DUST PLUG W/PULL TAB
76866-8807	NO	DUST PLUG
76866-8817	YES	DUST PLUG

REV PER IR28146 EC NO: UCP2013-5069 DRAWN BY: KBINGHAM 2013/03/08 CHKD: MCCLELLAND 2013/03/11 APPR: MCCLELL 2013/03/11	QUALITY SYMBOLS ▽=0 ▽=0 ▽=0	GENERAL TOLERANCES (UNLESS SPECIFIED)		DIMENSION STYLE MM ONLY		SCALE 4:1	DESIGN UNITS METRIC	THIRD ANGLE PROJECTION
		mm	INCH	DRAWN BY KBINGHAM	DATE 2013/03/08	TITLE IPASS PLUS HD DUST PLUG WITH & W/O PULL TAB EXTERNAL CAGES	MATERIAL NO. SD-76866-8806	
		4 PLACES	± ---	± ---	CHECKED BY MCCLELLAND	DATE 2013/03/11	DOCUMENT NO. SD-76866-8806	
		3 PLACES	± ---	± ---	APPROVED BY MCCLELL	DATE 2013/03/11	SHEET NO. 1 OF 1	
		2 PLACES	± 0.13	± ---	SEE CHART			
		1 PLACE	± 0.25	± ---	THIS DRAWING CONTAINS INFORMATION THAT IS PROPRIETARY TO MOLEX INCORPORATED AND SHOULD NOT BE USED WITHOUT WRITTEN PERMISSION			
		0 PLACE	± ---	± ---	ANGULAR ± 2 °			
		DRAFT WHERE APPLICABLE MUST REMAIN WITHIN DIMENSIONS		SIZE C				