

Excellent Integrated System Limited

Stocking Distributor

Click to view price, real time Inventory, Delivery & Lifecycle Information:

[Molex Connector Corporation](#)
[5600850101](#)

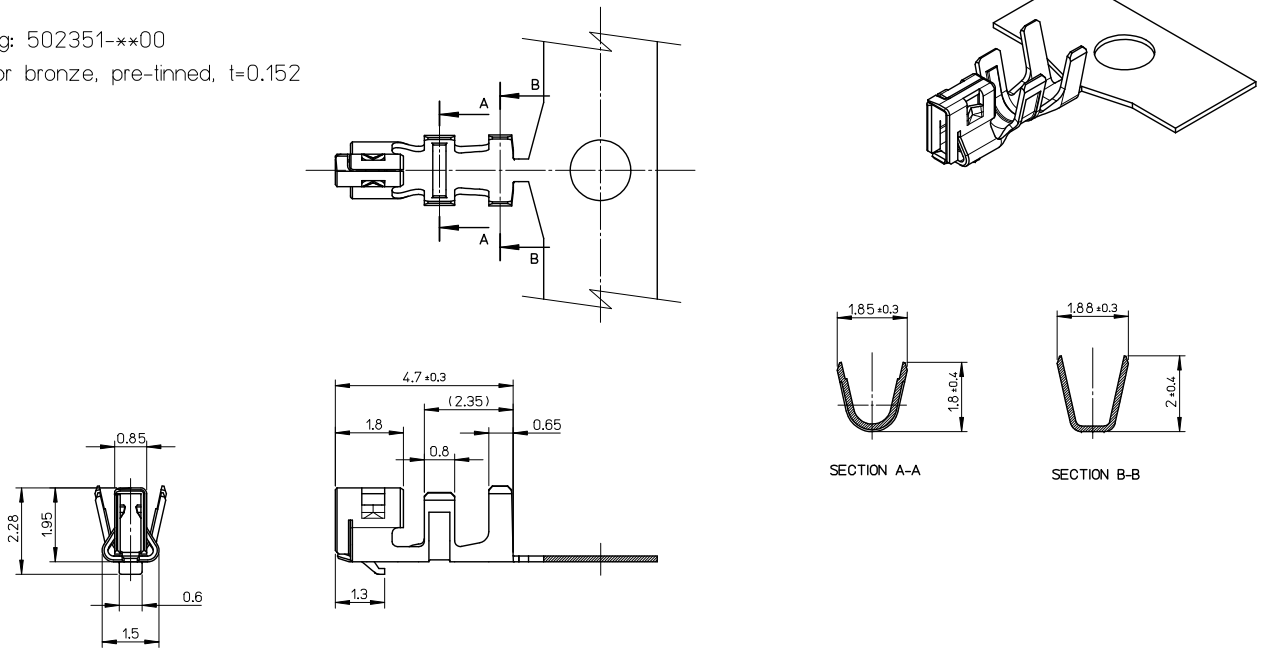
For any questions, you can email us directly:

sales@integrated-circuit.com

10 9 8 7 6 5 4 3 2 1

NOTES

1. Applicable housing: 502351-**00
2. Material: Phosphor bronze, pre-tinned, t=0.152



WIRE RANGE
AWG: #22~#26

INSULATION RANGE
Ø1.4 MAX.

560085-0101		CHAIN	
MATERIAL No.		FORM	
SCALE 10:1	DESIGN UNITS METRIC	THIRD ANGLE PROJECTION	
GENERAL TOLERANCES (UNLESS SPECIFIED) 10 UNDER ± 0.2 10 OVER 30 UNDER ± 0.25 30 OVER ± 0.3 ANGULAR ± 3 ° DRAFT WHERE APPLICABLE MUST REMAIN WITHIN DIMENSIONS			
DIMENSION STYLE MM ONLY DRAWN BY: YAMAKI CHECKED BY: KOMATSU APPROVED BY: MAYAMAMOTO DATE: 2013/03/19		TITLE 2.0 WIRE TO BOARD CONN. CRIMP RECEPTACLE (DuraClick)	
REVISED EC NO: JTR2013-0056 DRWN: YAMAKI CHKD: KOMATSU APPR: MAYAMAMOTO DATE: 2013/03/19 DATE: 2013/03/19 DATE: 2013/03/21		molex SEE CHART THIS DRAWING CONTAINS INFORMATION THAT IS PROPRIETARY TO MOLEX INCORPORATED AND SHOULD NOT BE USED WITHOUT WRITTEN PERMISSION	
MATERIAL NO. SD-560085-001		DOCUMENT NO. SD-560085-001 SHEET NO. 1 OF 1	

9 8 7 6 5 4 3 2 1