

## Excellent Integrated System Limited

Stocking Distributor

Click to view price, real time Inventory, Delivery & Lifecycle Information:

[Phoenix Contact](#)  
[1460296](#)

For any questions, you can email us directly:

[sales@integrated-circuit.com](mailto:sales@integrated-circuit.com)

https://www.phoenixcontact.com/us/products/1460296



## Housing - HC-B 10-KMQ-H-O1M25 - 1460296

Please be informed that the data shown in this PDF Document is generated from our Online Catalog. Please find the complete data in the user's documentation. Our General Terms of Use for Downloads are valid (<http://download.phoenixcontact.com>)



HEAVYCON B10 coupling housing, with double locking latch, height: 77.5 mm, with 1 x M25 gland, straight cable outlet



### Key commercial data

Packing unit	1 pc
Custom tariff number	85389099
Country of origin	Germany

### Technical data

#### Dimensions

Height	77.5 mm
Width	43 mm
Length	73 mm

#### Ambient conditions

Ambient temperature (operation)	-40 °C ... 125 °C
---------------------------------	-------------------

#### General

Note	For contact inserts HC-B10, BB18, DD42, M, K8/24
Design	B10
Housing type	Coupling housings
Locking type	With double locking latch
No. of cable exits	1
Cable exit	Straight
Screw connection	None
Type of the screw connection	1x M25
Housing material	Aluminum die-cast
Housing surface material	Powder-coated, gray

https://www.phoenixcontact.com/us/products/1460296



## Housing - HC-B 10-KMQ-H-O1M25 - 1460296

### Technical data

#### General

Seal material	NBR
Material lock	Stainless steel, handle: PA
Material grip body interlock	PA
Assembly instructions	For half and full screw connections

### Classifications

#### eCl@ss

eCl@ss 4.0	27140816
eCl@ss 4.1	27140816
eCl@ss 5.0	27143424
eCl@ss 5.1	27143424
eCl@ss 6.0	27143424
eCl@ss 7.0	27440209
eCl@ss 8.0	27440209

#### ETIM

ETIM 3.0	EC000437
ETIM 4.0	EC000437
ETIM 5.0	EC000437

#### UNSPSC

UNSPSC 6.01	31261502
UNSPSC 7.0901	31261502
UNSPSC 11	31261502
UNSPSC 12.01	31261502
UNSPSC 13.2	31261502

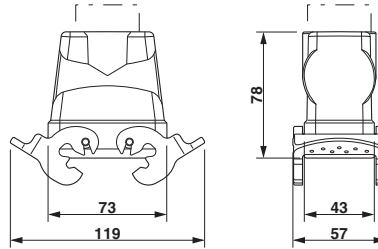
### Drawings

<https://www.phoenixcontact.com/us/products/1460296>



## Housing - HC-B 10-KMQ-H-O1M25 - 1460296

Dimensioned drawing



Dimensional drawing

© Phoenix Contact 2013 - all rights reserved  
<http://www.phoenixcontact.com>