



## **Excellent Integrated System Limited**

Stocking Distributor

Click to view price, real time Inventory, Delivery & Lifecycle Information:

[Amphenol RF](#)  
[031-5959-RFX](#)

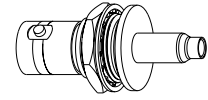
For any questions, you can email us directly:

[sales@integrated-circuit.com](mailto:sales@integrated-circuit.com)

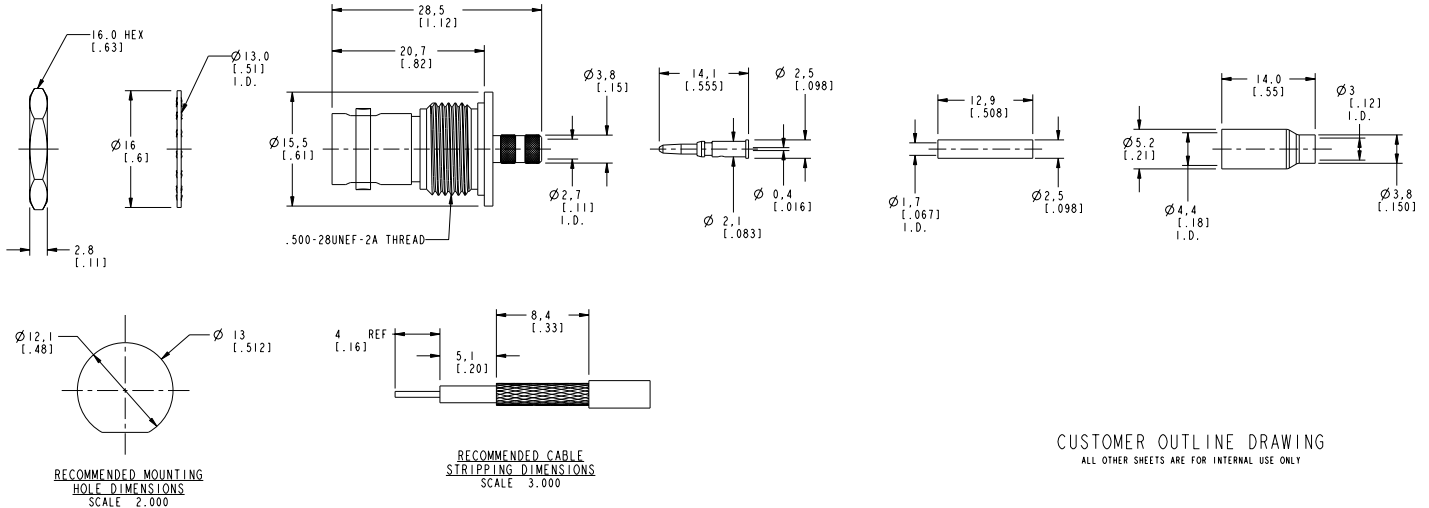
NOTE:

- MATERIALS OF CONSTRUCTION:  
 HOUSING, BODY, BARREL, FERRULE, & HEX NUT = BRASS (00-B-626), NICKEL PLATED  
 SLEEVE & INSULATORS (2) = DELRIN, COLOR NATURAL  
 CONTACT PIN = PHOSPHOR BRONZE, GOLD PLATED  
 LOCK WASHER = BRASS (00-B-613), NICKEL PLATED
- CRIMPED FERRULE: HEX CRIMP SIZE .178  
 CRIMPED CONTACT PIN: HEX CRIMP SIZE .068

31-5959-RFX		REVISIONS			
DRAWING NO.	REV	DESCRIPTION	DATE	ECO	APPR
THIRD ANGLE PROJ.	A	RELEASE TO MFG.	11/1/00	43581	CPM



SCALE 1.500



UNLESS OTHERWISE SPECIFIED, DIMENSIONS ARE IN INCHES AND TOLERANCES ARE:  
 0 - 6mm ±0.2mm    6 - 30mm ±0.4mm    30 - 120mm ±0.6mm

NOTICE - These drawings, specifications, or other data (1) are, and remain the property of Amphenol Corp. (2) must be returned upon request; and (3) are confidential and not to be disclosed to any person other than those to whom they are given by Amphenol Corp. The furnishing of these drawings, specifications, or other data by Amphenol Corp., or to any other person to anyone for any purpose is not to be regarded by implication or otherwise in any manner licensing, granting rights or permitting such holder or any other person to manufacture, use or sell any product, process or design, patented or otherwise, that may in any way be related to or disclosed by said drawings, specifications, or other data.

MATERIAL	DRAWN	DATE	TITLE	Amphenol Amphenol Corporation Communication and Network Products Division Danbury, CT U.S.A. 06810
	C. McGRATH	10/25/00		
REFERENCE	ENGINEER	DATE	BNC BULKHEAD ISOLATED CRIMP JACK (RG-174/U, 188A/U, 316/U)	SCALE: 2.0:1 SHEET 2 OF 2
	T. AUBIN	10/25/00		
	APPROVED	DATE	CAD FILE	CODE ID
	O. BARTHELMES	11/1/00	1:\BNC\31-5959-RFX	74868
			DWG SIZE	DRAWING NO.
			B	31-5959-RFX
				REV
				A