



## **Excellent Integrated System Limited**

Stocking Distributor

Click to view price, real time Inventory, Delivery & Lifecycle Information:

[Amphenol RF](#)  
[031-6110](#)

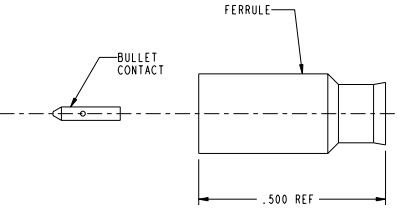
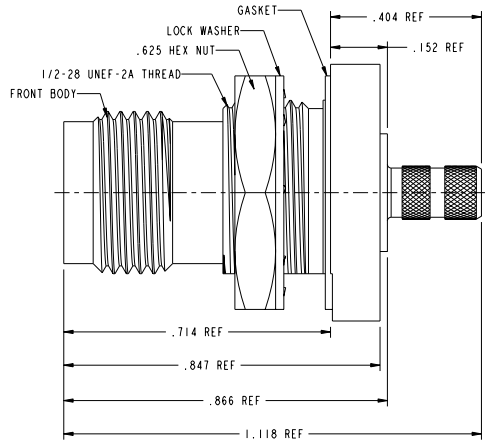
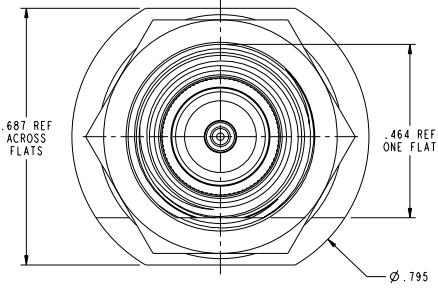
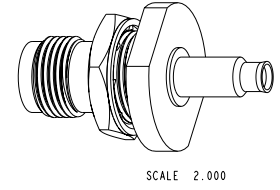
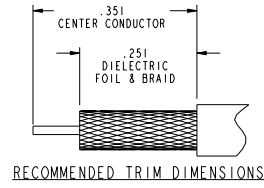
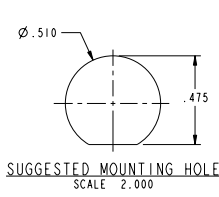
For any questions, you can email us directly:

[sales@integrated-circuit.com](mailto:sales@integrated-circuit.com)

NOTES:

- MATERIALS AND FINISHES:**
  - BODIES - BRASS, NICKEL PLATED
  - CONTACT - PHOSPHOR BRONZE, GOLD PLATED (.000030" THICK MIN)
  - BULLET CONTACT - BRASS, GOLD PLATED
  - CRIMP FERRULE - ANNEALED COPPER, NICKEL PLATED
  - INSULATOR - PTFE
  - O-RING & GASKET - SILICONE
- ELECTRICAL:** (FREQUENCY RANGE - DC TO 3.0 GHz)  
 V.S.W.R. (RETURN LOSS) = 1.250 MAX. (-19.1 dB)
- MECHANICAL:**  
 WATER PROTECTION IN UNMATED CONDITION PER IEC 529, IP67  
 CONTINUOUS OPERATING TEMPERATURE: -40°C TO +85°C
- INTERFACE MEETS THE REQUIREMENTS OF MIL-STD-348, TNC SERIES, REVERSE POLARITY.**
- CABLE ASSEMBLY INSTRUCTIONS:**  
 TRIM CABLE AS SHOWN  
 SLIDE CRIMP FERRULE ONTO CABLE  
 CRIMP OR SOLDER BULLET CONTACT TO CABLE CENTER CONDUCTOR  
 INSERT CABLE WITH BULLET CONTACT INTO REAR FERRULE BODY,  
 SLIDING FOIL INTO THE BODY AND THE BRAID OVER THE BODY.  
 CRIMP FERRULE USING A .178 HEX DIE

31-6110		REVISIONS			
DRAWING NO.	REV	DESCRIPTION	DATE	ECO	APPR
THIRD ANGLE PROJ.	A	RELEASE TO MFG.	7/7/03	44541	MAH
	B	ADDED RD-316 TO CABLE LIST	5/11/04	44947	



**CUSTOMER OUTLINE DRAWING**  
 ALL OTHER SHEETS ARE FOR INTERNAL USE ONLY

UNLESS OTHERWISE SPECIFIED, DIMENSIONS ARE IN INCHES AND TOLERANCES ARE: 2 PLACE DECIMAL ±.015 (0.381 mm) 3 PLACE DECIMAL ±.005 (0.127 mm) ANGLES ± 1°	MATERIAL  REFERENCE EAR 841 611X-4117-100 GEN# ASSYF38_TNC SIMILAR TO: 31-6100	DRAWN MIKE HOYACK DATE 27-Jan-03	TITLE TNC JACK SEALED BULKHEAD, REVERSE POLARITY, FOR RG-174 RG-316 AND RD-316	Amphenol RF Danbury, CT, USA Tainan, Taiwan Shenzhen, China www.amphenolrf.com		
		ENGINEER MIKE HOYACK DATE 27-Jan-03			APPROVED O. BARTHELMES DATE 7/2/03	SCALE: 4.0:1 SHEET 2 OF 2
NOTICE - These drawings, specifications, or other data (1) are, and remain the property of Amphenol Corp. (2) must be returned upon request; and (3) are confidential and not to be disclosed to any person other than those to whom they are given by Amphenol Corp. The furnishing of these drawings, specifications, or other data by Amphenol Corp., or to any other person to anyone for any purpose is not to be regarded by implication or otherwise in any manner licensing, granting rights or permitting such holder or any other person to manufacture, use or sell any product, process or design, patented or otherwise, that may in any way be related to or disclosed by said drawings, specifications, or other data.		CAD FILE 1:\TNC\31-6110	CODE ID 74868	DWG SIZE B	DRAWING NO. 31-6110	REV B