

Excellent Integrated System Limited

Stocking Distributor

Click to view price, real time Inventory, Delivery & Lifecycle Information:

[Amphenol Pcd](#)
[TJM112605](#)

For any questions, you can email us directly:

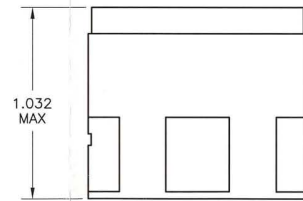
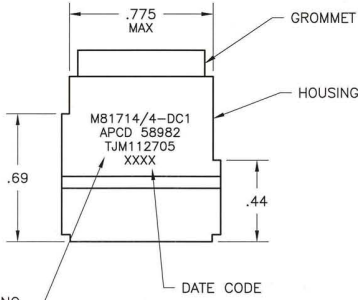
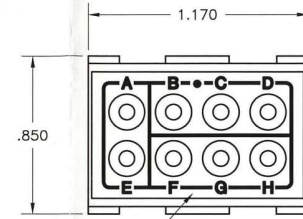
sales@integrated-circuit.com

TJM112605

REV	ECN	APP'D
T	3232	JR 3/16/98
U	3305	JR 4/20/98
X	3309	JR 4/29/98
Y	-	-
Z	5493	JT 8/2/04
AA	5510	<i>JD 4/4/04</i>

NOTES:

- REQUIREMENTS:
 - MEETS PERFORMANCE AND ENVIRONMENTAL REQUIREMENTS OF MIL-T-81714/4 REV. F.
 - MODULES ARE TO BE MOUNTED INTO RACK ASSEMBLY M81714/5 OR /16 OR COMMERCIAL EQUIVALENT.
 - DIELECTRIC WITHSTANDING VOLTAGE: 1500VRMS, 2mA LEAKAGE, 25° C AT SEA LEVEL, CONTACT TO MOUNTING RACK.
 - OPERATING TEMPERATURE: -65 C TO 200° C.
- MATERIALS:
 - HOUSING - POLYETHERIMIDE, COLOR: BLACK.
 - GROMMET - SILICONE ELASTOMER, COLOR: BLUE.
 - INTERNAL CONTACTS - COPPER ALLOY, GOLD PLATED
 - CONTACT RETAINERS - BERYLLIUM COPPER.
- PIN CONTACT CRIMP AND INSTALLATION TOOLS ARE NOT INCLUDED. REQUIREMENTS BELOW ARE FOR REFERENCE ONLY.
 - PIN CONTACTS - SEE TABLE
 - CONTACT TOOLS -
 - CRIMP TOOL: M22520/1-01
 - POSITIONER: M22520/1-02, YELLOW
 - INSERTION/REMOVAL: M81969/14-04.
- INSPECT PARTS PER APPLICABLE INSPECTION PLAN, TJM1126XX OR TJM1127XX.



WHITE MARKING
 .062 HIGH
 (MARKING TYP BOTH P/N)

PCD P/N	SUPPLIED	
	PIN CONTACT M39029/1-103	SEALING PLUG MS27488-12
TJM112605	NONE	NONE
TJM112705	NINE (9)	TWO (2)

DIMENSIONS	TOLERANCES	PROJECTION	Amphenol Pcd SPECIFICATION DRAWING	TITLE
ANSI Y14.5M UNITS: INCHES ACAD FILE	.XX ± 01 .XXX ± 005 ANGLES ± 2'		ENGR A. PATRIE 8/8/95 CHKD A. PATRIE 6/12/01 APPD J. RUTKOWSKI 8/15/95	TERMINAL JUNCTION MODULE SZ-12 FEEDBACK, C1 BUS
	THIS DOCUMENT CONTAINS PROPRIETARY INFORMATION WHICH IS THE CONFIDENTIAL PROPERTY OF AMPHENOL PCD INC. PEABODY, MA		SIZE B	DWG NO. TJM112605 REV AA
			CODE: 58982	SCALE: 2X SHEET 1 OF 1

TJM112605

TJM112605