

Excellent Integrated System Limited

Stocking Distributor

Click to view price, real time Inventory, Delivery & Lifecycle Information:

[Molex Connector Corporation](#)
[71661-5910](#)

For any questions, you can email us directly:

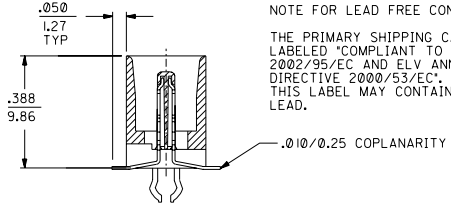
sales@integrated-circuit.com

NOTES:

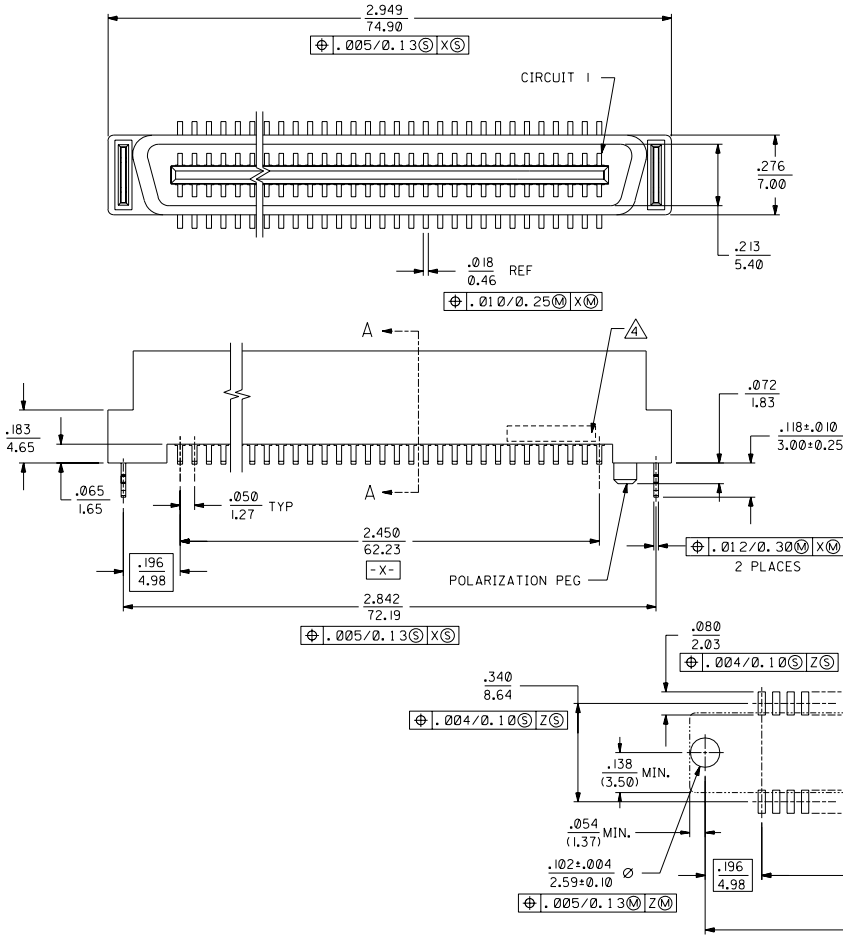
- 1) MATERIALS:
HOUSING: I.R. COMPATIBLE POLYMER, GLASS FILLED,
UL 94 V 0, BLACK
TERMINALS: BRASS
METAL PEGS- PHOSPHOR BRONZE.
- 2) PLATING:
.000030/(0.00076) MINIMUM GOLD IN CONTACT AREA AND
.000050/(0.00127) MINIMUM TIN IN TAIL AREA OVER
.000075/(0.00191) MINIMUM NICKEL UNDERPLATING OVERALL.
- 3) ASSEMBLY MATES WITH MOLEX P/N SDA-71660-****,
CONFORMS TO PRODUCT SPECIFICATION PS-71660.
- 4) FOUR DIGIT DATE CODE (WK, YR), EXAMPLE => 26 96
LOCATED IN AREA INDICATED.
- 5) PRODUCT PACKAGED PER PK-70873-055.

NOTE FOR LEAD FREE CONVERSION:

THE PRIMARY SHIPPING CARTON WILL BE
LABELED "COMPLIANT TO ROHS DIRECTIVE
2002/95/EC AND ELV ANNEX II OF
DIRECTIVE 2000/53/EC". CARTONS WITHOUT
THIS LABEL MAY CONTAIN PRODUCT WITH
LEAD.



SECTION A-A
SCALE 4:1



F	LEAD FREE CONV. ECN UCP2004-2096 RADAMS 04/04/23
E	CHANGED PK SPEC. ECN UCP2003-1596 RWHITE 03/02/06
D	ADD PEG LENGTH DIM ECN UDT2002-1289 BBARKER 02/05/13
C	REV PACKAGING ECN UDT2000-1183 ACHAMMER 02/05/10
B	REVISED PER ECN UDT1999-1036 KSMITH 99/05/26
A1	REVISED PER ECN UDT0444 ACHAMMER 96-11-25
A	INITIAL RELEASE PER ECN UDT0551 3-1-96 RAN

MFG. SH.	REV.	LTR.	REVISIONS
✓	0	0	REVISE ONLY ON CAD SYSTEM
TITLE			
SALES ASSEMBLY			
EBBI EXT. HEIGHT VERTICAL			
100 CIRCUIT SMT CONNECTOR			
MOLEX INCORPORATED		SHEET NO. DATE	
71661-5910		1 OF 1 03/01/96	
PART NO.		DRWG. NO.	
71661-5910		SDA-71661-5910	
DRG. BY		CHKD. BY	
APPD. GW		SCALE 4:1	
FILE NAME		THIS DRAWING CONTAINS INFORMATION THAT IS PROPRIETARY TO MOLEX INC. AND SHOULD NOT BE USED WITHOUT WRITTEN PERMISSION. DA	