

## Excellent Integrated System Limited

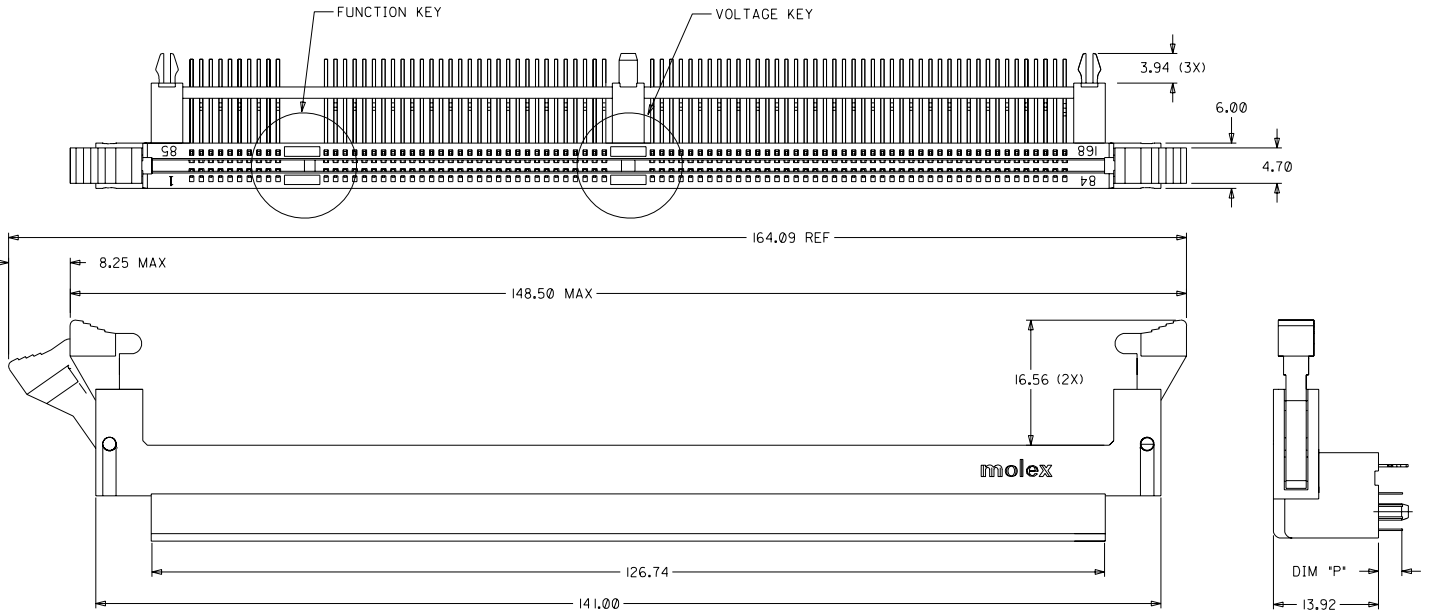
Stocking Distributor

Click to view price, real time Inventory, Delivery & Lifecycle Information:

[Molex Connector Corporation](#)  
[87609-0059](#)

For any questions, you can email us directly:

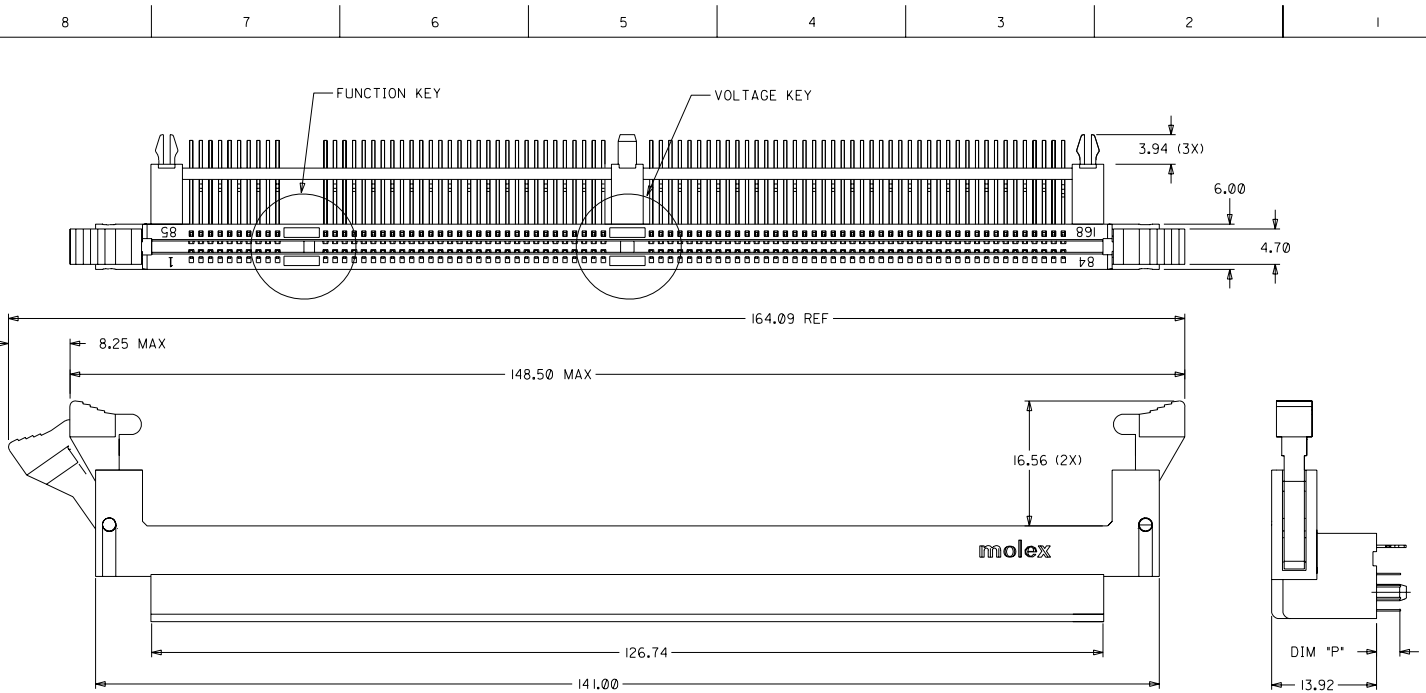
[sales@integrated-circuit.com](mailto:sales@integrated-circuit.com)



**NOTES:**

1. PRODUCT SPEC PS-87609-002 APPLIES.
2. PRODUCT IS PACKAGED IN TRAYS.
3. MATERIALS:  
HOUSING- HIGH-TEMP THERMOPLASTIC  
TERMINAL- PHOSPHOR BRONZE  
LATCHES - HIGH-TEMP THERMOPLASTIC  
FORKLOCKS - COPPER ALLOY OR STEEL ALLOY  
BASE-PLATE - HIGH-TEMP THERMOPLASTIC  
COVER - HIGH-TEMP THERMOPLASTIC
4. PLATING:  
CONTACT AREA:  
SEE TABLE ON SHEET 3 OF 3  
FOR GOLD PLATING OPTION AT CONTACT AREA  
SOLDER TAILS: 75µIN./ (1.91µM) MIN. TIN-LEAD  
UNDERPLATE: 50µIN./ (1.27µM) MIN. NICKEL

REVISE PER ECN EC NO. S2002-03170 DRWN: DSDH 020305 CHR: JS ODR 020306 APPR: KC LING 020306 C	QUALITY SYMBOLS MAJOR ▼ = 0 CRITICAL ▽ = 0	GENERAL TOLERANCES: (UNLESS SPECIFIED)		SCALE NTS	DESIGN UNITS <input checked="" type="checkbox"/> mm <input type="checkbox"/> INCH	THIRD ANGLE PROJECTION	DIMENSIONS: <input type="checkbox"/> mm <input type="checkbox"/> INCH <input checked="" type="checkbox"/> mm ONLY	SHT REV		
		4 PLACES ±0. --- ±.	3 PLACES ±0. --- ±.	2 PLACES ±0.25 ±.	1 PLACE ±0. --- ±.	DRAWN BY & DATE STEVEN Q 000121	CHECKED BY & DATE KC LING 000301	APPROVED BY & DATE SK TOH 000303	TITLE: 1.27 MM PITCH RIGHT ANGLE 168 CKTS MULTI-KEY DIMM	REVISE ON CAD ONLY
		ANGULAR: ± 5°		CAD FILENAME NA	MATERIAL NO. SEE TABLE	DRAWING NO. SD-87609-001	SHEET NO. 1 OF 3	SIZE A3		
		THIS DRAWING CONTAINS INFORMATION THAT IS PROPRIETARY TO MOLEX INCORPORATED AND SHOULD NOT BE USED WITHOUT WRITTEN PERMISSION.								

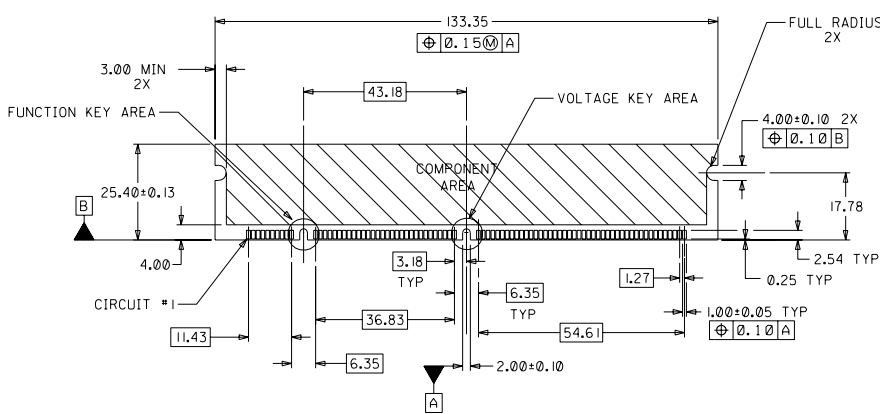


**NOTES:**

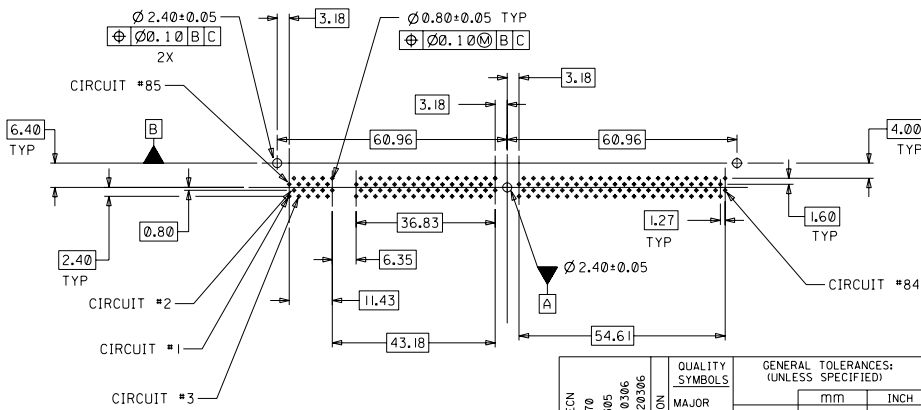
1. PRODUCT SPEC PS-87609-002 APPLIES.
2. PRODUCT IS PACKAGED IN TRAYS.
3. MATERIALS:  
HOUSING- HIGH-TEMP THERMOPLASTIC  
TERMINAL- PHOSPHOR BRONZE  
LATCHES - HIGH-TEMP THERMOPLASTIC  
FORKLOCKS - COPPER ALLOY OR STEEL ALLOY  
BASE-PLATE - HIGH-TEMP THERMOPLASTIC  
COVER - HIGH-TEMP THERMOPLASTIC
4. PLATING:  
CONTACT AREA:  
SEE TABLE ON SHEET 3 OF 3  
FOR GOLD PLATING OPTION AT CONTACT AREA  
SOLDER TAILS: 75µIN./ (1.91µM) MIN. TIN-LEAD  
UNDERPLATE: 50µIN./ (1.27µM) MIN. NICKEL

REV	DESCRIPTION	QUALITY SYMBOLS	GENERAL TOLERANCES: (UNLESS SPECIFIED)		SCALE NTS	DESIGN UNITS	THIRD ANGLE PROJECTION	DIMENSIONS:		SHT	REV	
			mm	INCH				mm	INCH			
C	REVISE PER ECN	MAJOR	±0. ---	±.	DRAWN BY & DATE STEVEN O 000121	INCH	TITLE: 1.27 MM PITCH RIGHT ANGLE 168 CKTS MULTI-KEY DIMM	mm	mm ONLY	REVISE ON CAD ONLY		
	EC NO. S2002-0370	CRITICAL	±0. ---	±.								CHECKED BY & DATE KC LING 000301
	PRIN: D50M 002005		±0.25	±.								APPROVED BY & DATE SK TOH 000303
	CHK: JS CHN 002005		±0. ---	±.								CAD FILENAME NA
			ANGULAR: ± 5°				MATERIAL NO. SEE TABLE	DRAWING NO. SD-87609-001	SHEET NO. 1 OF 3			
<p><b>MOLEX INCORPORATED</b></p> <p>THIS DRAWING CONTAINS INFORMATION THAT IS PROPRIETARY TO MOLEX INCORPORATED AND SHOULD NOT BE USED WITHOUT WRITTEN PERMISSION.</p>												

8 7 6 5 4 3 2 1

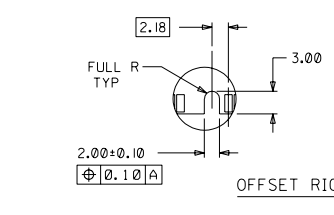
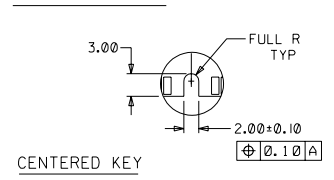
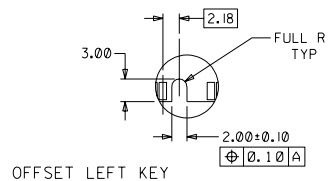


RECOMMENDED MODULE LAYOUT  
(PER JEDEC STANDARD MO-161, 168 CKT. 3.3V)



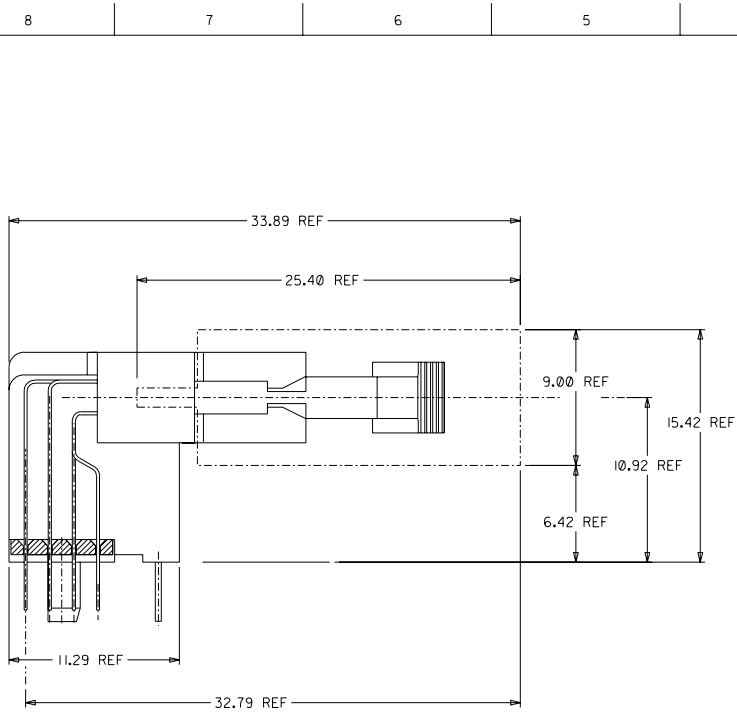
RECOMMENDED  
P.C. BOARD HOLE PATTERN  
(CONNECTOR SIDE)

FUNCTION KEY AREA OPTIONS  
(REFER ALSO TO TABLE ON SHT. 3)



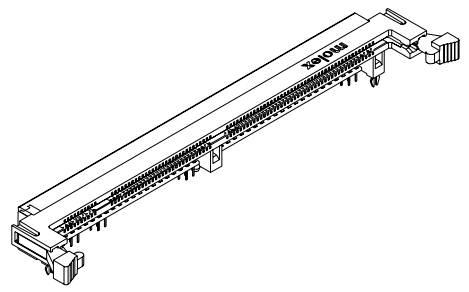
- NOTES:
1. STRAIGHTNESS OF MODULE APPLIES TO THE AREA FROM THE BOTTOM OF THE CARD UP 4.00(1.57)
  2. RECOMMENDED PLATING ON MODULE PADS: 0.76 MICROMETER(30 MICROINCH) MINIMUM HARD GOLD OVER 2.0 MICROMETER(79 MICROINCH) MINIMUM NICKEL.

REVISE PER ECN EC NO. 52002-0370 PRINR. DSOH 020305 CHKR. JS CH 020306 APPR. KC LING 020306	QUALITY SYMBOLS MAJOR ▼ = 0 CRITICAL ▽ = 0	GENERAL TOLERANCES: (UNLESS SPECIFIED)		SCALE	DESIGN UNITS	THIRD ANGLE PROJECTION	DIMENSIONS:	SHT	REV
		mm	INCH	NTS	mm □ INCH	mm	INCH	mm	INCH
C	REV	4 PLACES	±0. --- ±.	DRAWN BY & DATE	STEVEN O 000121	TITLE:	1.27 MM PITCH RIGHT ANGLE 168 CKTS MULTI-KEY DIMM		
		3 PLACES	±0. --- ±.	CHECKED BY & DATE	KC LING 000301	MOLEX INCORPORATED MATERIAL NO. SEE TABLE DRAWING NO. SD-87609-001 SHEET NO. 2 OF 3			
		2 PLACES	±0. 15 ±.	APPROVED BY & DATE	SK TOH 000303				
		1 PLACE	±0. --- ±.	ANGULAR: ±	5°	THIS DRAWING CONTAINS INFORMATION THAT IS PROPRIETARY TO MOLEX INCORPORATED AND SHOULD NOT BE USED WITHOUT WRITTEN PERMISSION.			



ACTUAL MODULE HEIGHT AND CLEARANCE  
WHEN USING A 9.00MM THICK BY 25.40MM HEIGHT  
MODULE (TYPICAL SOJ PACKAGING).

MATERIAL NO.	FUNCTION KEY	GOLD PLATING OPTION AT CONTACT AREA	DATUM VOLTAGE KEY	TAIL LENGTH P±0.25
87609-0048	LEFT	15µIN/(0.38µM) MIN.	CENTER (3.3V)	2.79
87609-0049	CENTRE			
87609-0050	RIGHT			
87609-0148	LEFT	30µIN/(0.76µM) MIN.	CENTER (3.3V)	3.18
87609-0149	CENTRE			
87609-0150	RIGHT			
87609-0057	LEFT	15µIN/(0.38µM) MIN.	CENTER (3.3V)	3.56
87609-0058	CENTRE			
87609-0059	RIGHT			
87609-0157	LEFT	30µIN/(0.76µM) MIN.	CENTER (3.3V)	3.56
87609-0158	CENTRE			
87609-0159	RIGHT			
87609-0066	LEFT	15µIN/(0.38µM) MIN.	CENTER (3.3V)	3.56
87609-0067	CENTRE			
87609-0068	RIGHT			
87609-0166	LEFT	30µIN/(0.76µM) MIN.	CENTER (3.3V)	3.56
87609-0167	CENTRE			
87609-0168	RIGHT			



REVISE PER ECN EC NO. S2002-0310 PRIN. DESIG. 020305 CHG. JS COM. 020306 APPR. KC LING. 020306 DESCRIPTION REV	QUALITY SYMBOLS MAJOR ▼ = 0 CRITICAL ▽ = 0	GENERAL TOLERANCES: (UNLESS SPECIFIED) mm INCH 4 PLACES ±0. --- ±. 3 PLACES ±0. --- ±. 2 PLACES ±0.25 ±. 1 PLACE ±0. --- ±. ANGULAR: ± 5°	SCALE NTS DESIGN UNITS <input checked="" type="checkbox"/> mm <input type="checkbox"/> INCH DRAWN BY & DATE STEVEN O 000121 CHECKED BY & DATE KC LING 000301 APPROVED BY & DATE SK TOH 000303 CAD FILENAME NA	DIMENSIONS: <input type="checkbox"/> mm <input type="checkbox"/> INCH <input checked="" type="checkbox"/> mm <input checked="" type="checkbox"/> ONLY THIRD ANGLE PROJECTION TITLE: L27 MM PITCH RIGHT ANGLE 168 CKTS MULTI-KEY DIMM MOLEX INCORPORATED MATERIAL NO. SEE TABLE DRAWING NO. SD-87609-001 SHEET NO. 3 OF 3 SIZE A3	SHT REV REVISE ON CAD ONLY
	THIS DRAWING CONTAINS INFORMATION THAT IS PROPRIETARY TO MOLEX INCORPORATED AND SHOULD NOT BE USED WITHOUT WRITTEN PERMISSION.				
	WBORD_A.BOR REV A 97/05/14 LEVEL 4				
	C				