



Excellent Integrated System Limited

Stocking Distributor

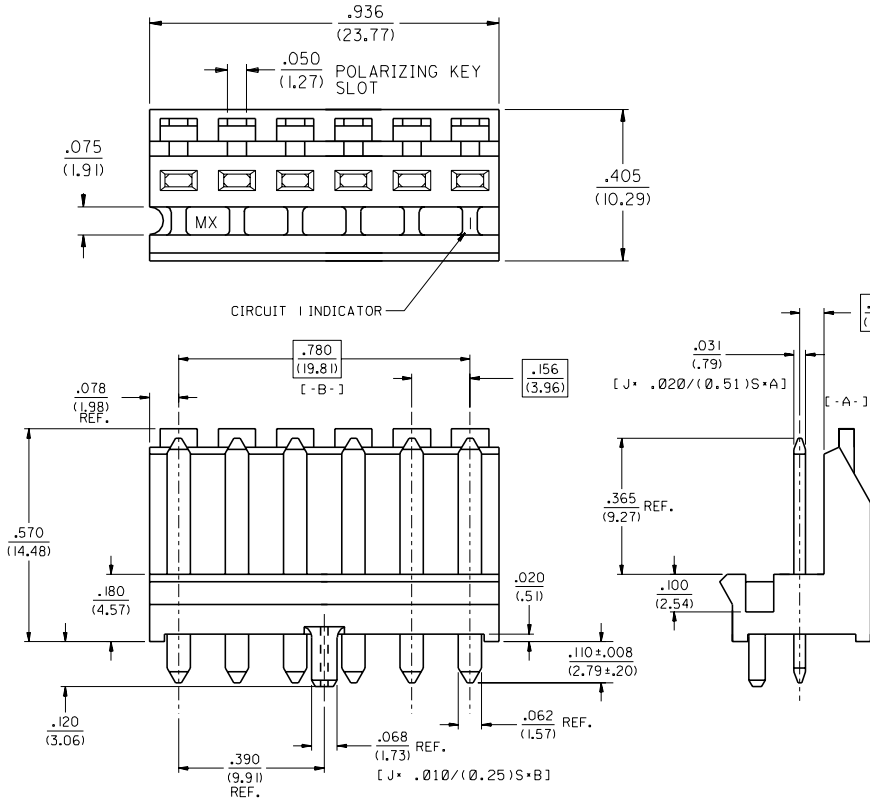
Click to view price, real time Inventory, Delivery & Lifecycle Information:

[Molex Connector Corporation](#)
[15-48-0106](#)

For any questions, you can email us directly:
sales@integrated-circuit.com

NOTES.

- AXIAL PIN PUSHOUT FORCE 2 LBS./(.91 KG) MIN..
- MATERIALS:
 WAFER-POLYESTER, 15% G.F., 94V-0, COLOR: BLACK.
 PIN-BRASS, ALLOY 260.
 PLATING-POST ELECTRO-PLATE .0002 IN./(.00000508 m) MIN.
 TIN OVER .0001 IN./(.00000254 m) MIN. COPPER
 (PER E.S. 88, CODE 102)
- P.S. 90331 APPLIES.



RECOMENDED
P.C.B. LAYOUT
SCALE 1:1

MFG.	SH.	REV.	LTR.	REVISIONS

E TRANSFER TO INDIA
PER UDT1999-0929
SCHAFER 99/04/30

D REDRAWN
PER ECR#U30800
MJS 5-27-93

DIMENSIONS SHOWN IN METRIC INCH		▽ = 0	▼ = 0	REVISE ONLY ON CAD SYSTEM
UNLESS OTHERWISE SPECIFIED TOLERANCES: ANGULAR ± 1/2°				

	INCH	METRIC
3 PLACE	± .010	---
2 PLACE	± .014	± 0.25
1 PLACE	---	± 0.35

DRAFT WHERE APPLICABLE MUST REMAIN WITHIN DIMENSIONS

TITLE	SHEET NO.	DATE
SALES ASSEMBLY HEADER, SINGLE ROW 6 POS. .156/(3.96) ♻	1	04/30/85

PART NO.	U.S.A.	DATE
MOLEX INCORPORATED LISLE, ILL. 60532	U.S.A.	04/30/85

DRWG. NO.	FILE NAME	DRWG. NO.
JIT	15-48-0106	SDA-8619-0600

DRWG. NO.	DATE	SIZE
SDA-8619-0600	04/30/85	DA B

THIS DRAWING CONTAINS INFORMATION THAT IS PROPRIETARY TO MOLEX INC. AND SHOULD NOT BE USED WITHOUT WRITTEN PERMISSION.