

## Excellent Integrated System Limited

Stocking Distributor

Click to view price, real time Inventory, Delivery & Lifecycle Information:

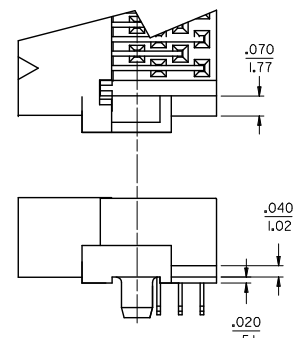
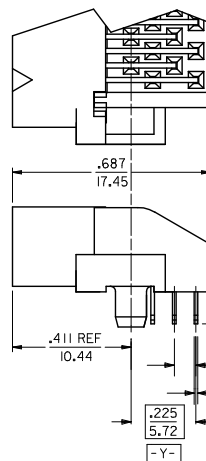
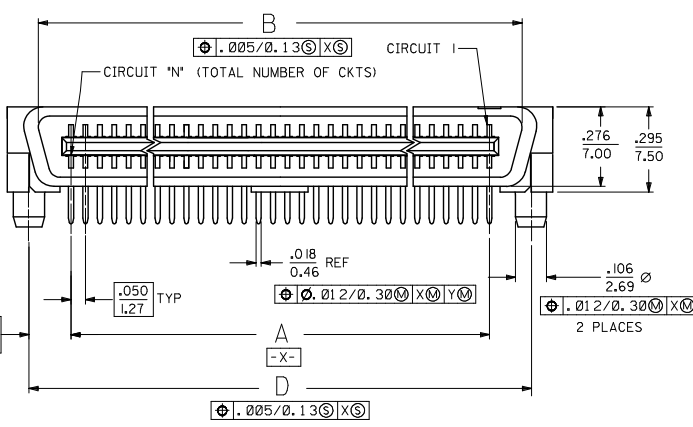
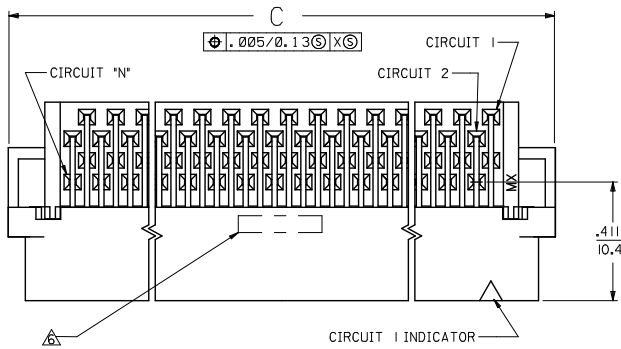
[Molex Connector Corporation](#)  
[71661-2040](#)

For any questions, you can email us directly:

[sales@integrated-circuit.com](mailto:sales@integrated-circuit.com)

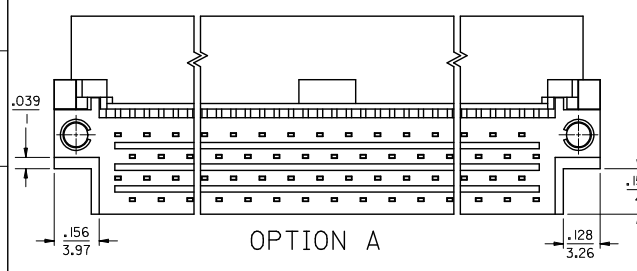
NOTES:

- MATERIAL:  
HOUSING: LIQUID CRYSTAL POLYMER (LCP), GLAS-FILLED, UL 94V-0.  
COLOR: BRASS  
TERMINALS: BRASS
  - FINISH:  
TERMINAL: 0.76 MICROMETERS/30 MICROINCHES MINIMUM SELECTIVE GOLD  
IN CONTACT AREA; 1.27 MICROMETERS/50 MICROINCHES MINIMUM  
SELECTIVE TIN IN THE PC TAIL AREA; NICKEL UNDERPLATE OVERALL
  - ASSEMBLY MATES WITH MOLEX P/N SDA-71660-\*\*\*\*
  - CONFORMS TO PRODUCT SPEC: PS-71660
- △ RECOMMENDED PC BOARD THICKNESS IS .062/1.60  
 △ FOUR DIGIT DATE CODE (WK.YR) EXAMPLE 26 96 LOCATED IN AREA SHOWN  
 △ TOOLING STATUS: 'X' INDICATES NO TOOLING AVAILABLE  
 CONTACT FACTORY FOR FURTHER INFORMATION



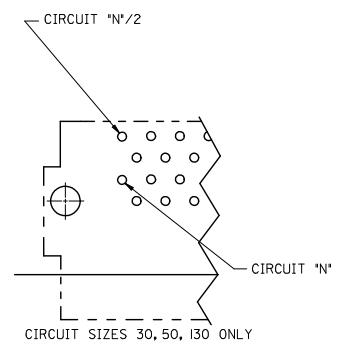
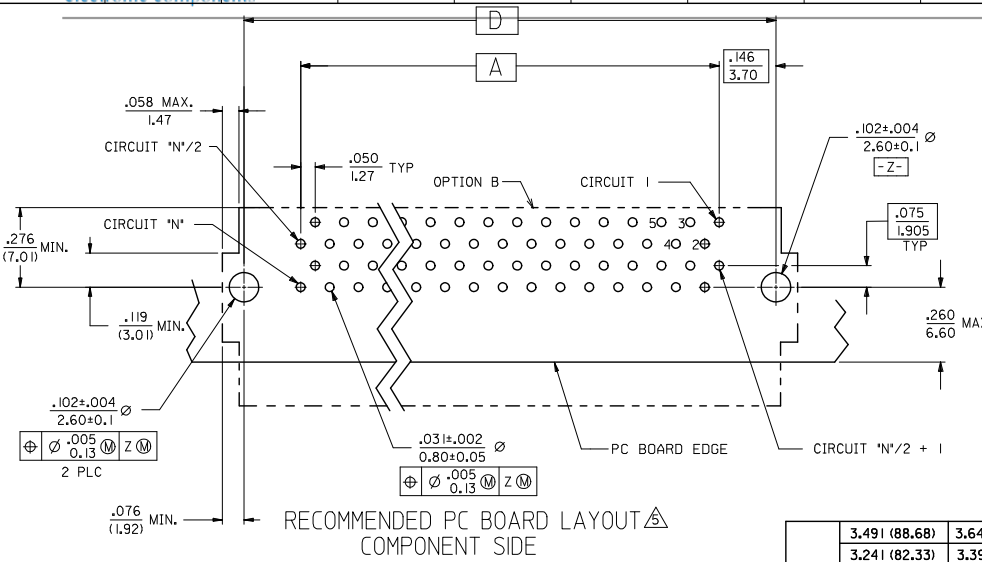
END DETAIL  
OPTION A  
(BOTH ENDS)

END DETAIL  
OPTION B  
(BOTH ENDS)



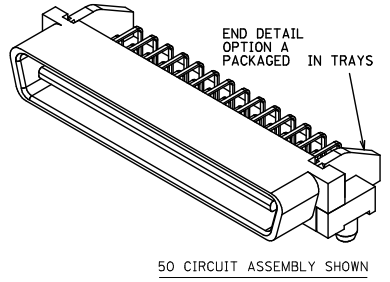
CHANGE MATERIAL IEC NO: 2008/12/19 DRAWING BARRA 2009/01/06 CHKD BARBER 2009/01/06 APPR SMILLER 2009/01/06 DESCRIPTION REV	QUALITY SYMBOLS	GENERAL TOLERANCES (UNLESS SPECIFIED)	DIMENSION STYLE IN/MM	SCALE 4:1	DESIGN UNITS INCH	THIRD ANGLE PROJECTION
	▽=0 ▽=0	4 PLACES ± --- 3 PLACES ± --- ± .010 2 PLACES ± 0.25 ± --- 1 PLACE ± --- ± --- ANGULAR ± 1/2°	DRAWN BY RAN DATE 1993/02/23 CHECKED BY DATE APPROVED BY CAB DATE 1993/02/23	TITLE	SALES ASSEMBLY EBB1 50D RIGHT ANGLE PLUG CONNECTOR	
	DRAFT WHERE APPLICABLE MUST REMAIN WITHIN DIMENSIONS	SEE TABLE	MATERIAL NO.	DOCUMENT NO.	MOLEX INCORPORATED SDA-71661-2***	
		SIZE C	THIS DRAWING CONTAINS INFORMATION THAT IS PROPRIETARY TO MOLEX INCORPORATED AND SHOULD NOT BE USED WITHOUT WRITTEN PERMISSION			

13 12 11 10 9 8 7 6 5 4 3 2 1

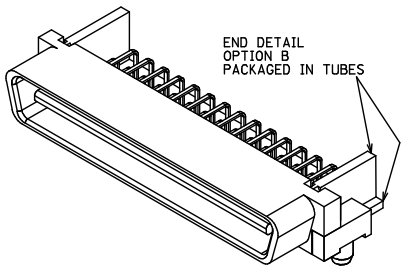


TRAY PACK PER SPEC. PK-70873-084\*  
END DETAIL OPTION 'A'

	3.491 (88.68)	3.642 (92.50)	3.426 (87.02)	3.200 (81.28)	130	71661-2430	
.125 (3.18)	3.241 (82.33)	3.392 (86.15)	3.176 (80.67)	2.950 (74.93)	120	71661-2420	
	2.741 (69.63)	2.892 (73.45)	2.676 (67.97)	2.450 (62.23)	100	71661-2400	
	2.241 (56.93)	2.392 (60.75)	2.176 (55.27)	1.950 (49.53)	80	71661-2380	
	1.941 (49.31)	2.092 (53.13)	1.875 (47.65)	1.650 (41.91)	68	71661-2368	
	1.741 (44.23)	1.892 (48.05)	1.676 (42.57)	1.450 (36.83)	60	71661-2360	
	1.491 (37.88)	1.642 (41.70)	1.426 (36.22)	1.200 (30.48)	50	71661-2350	
	1.241 (31.53)	1.392 (35.35)	1.176 (29.87)	.950 (24.13)	40	71661-2340	
	.991 (25.18)	1.142 (29.00)	.925 (23.52)	.700 (17.78)	30	71661-2330	
	.110 (2.79)	3.491 (88.68)	3.642 (92.50)	3.426 (87.02)	3.200 (81.28)	130	71661-2130
		3.241 (82.33)	3.392 (86.15)	3.176 (80.67)	2.950 (74.93)	120	71661-2120
2.741 (69.63)		2.892 (73.45)	2.676 (67.97)	2.450 (62.23)	100	71661-2100	
2.241 (56.93)		2.392 (60.75)	2.176 (55.27)	1.950 (49.53)	80	71661-2080	
1.941 (49.31)		2.092 (53.13)	1.875 (47.65)	1.650 (41.91)	68	71661-2068	
1.741 (44.23)		1.892 (48.05)	1.676 (42.57)	1.450 (36.83)	60	71661-2060	
1.491 (37.88)		1.642 (41.70)	1.426 (36.22)	1.200 (30.48)	50	71661-2050	
1.241 (31.53)		1.392 (35.35)	1.176 (29.87)	.950 (24.13)	40	71661-2040	
.991 (25.18)		1.142 (29.00)	.925 (23.52)	.700 (17.78)	30	71661-2030	
E		D	C	B	A	CKT ('N')	△ ITEM NUMBER



50 CIRCUIT ASSEMBLY SHOWN



CHANGE MATERIAL EC NO: UCP2009-1234 DRAWN BY: 2008/12/19 CHKD BY: 2009/01/06 APPR: 2009/01/06	QUALITY SYMBOLS ▽=0 ▽=0	GENERAL TOLERANCES (UNLESS SPECIFIED)	DIMENSION STYLE	SCALE	DESIGN UNITS	THIRD ANGLE PROJECTION
		4 PLACES ± --- INCH	IN/MM	4:1	INCH	
		3 PLACES ± --- ± .010	DRAWN BY: RAN DATE: 1993/02/23	TITLE: SALES ASSEMBLY EBB1 50D RIGHT ANGLE PLUG CONNECTOR		
		2 PLACES ± 0.25 ± ---	CHECKED BY: RAN DATE: 1993/02/23	MOLEX INCORPORATED		
1 PLACE ± --- ± ---	APPROVED BY: CAB DATE: 1993/02/23	ANGULAR ± 1/2°	MATERIAL NO.	DOCUMENT NO.	SHEET NO. 2 OF 2	
DRAFT WHERE APPLICABLE MUST REMAIN WITHIN DIMENSIONS		SEE TABLE	SDA-71661-2***			
		SIZE C	THIS DRAWING CONTAINS INFORMATION THAT IS PROPRIETARY TO MOLEX INCORPORATED AND SHOULD NOT BE USED WITHOUT WRITTEN PERMISSION			

1d\_frame\_C.P.A.M.T Rev. E 2006/04/15 12 11 10 9 8 7 6 5 4 3 2 1