

Excellent Integrated System Limited

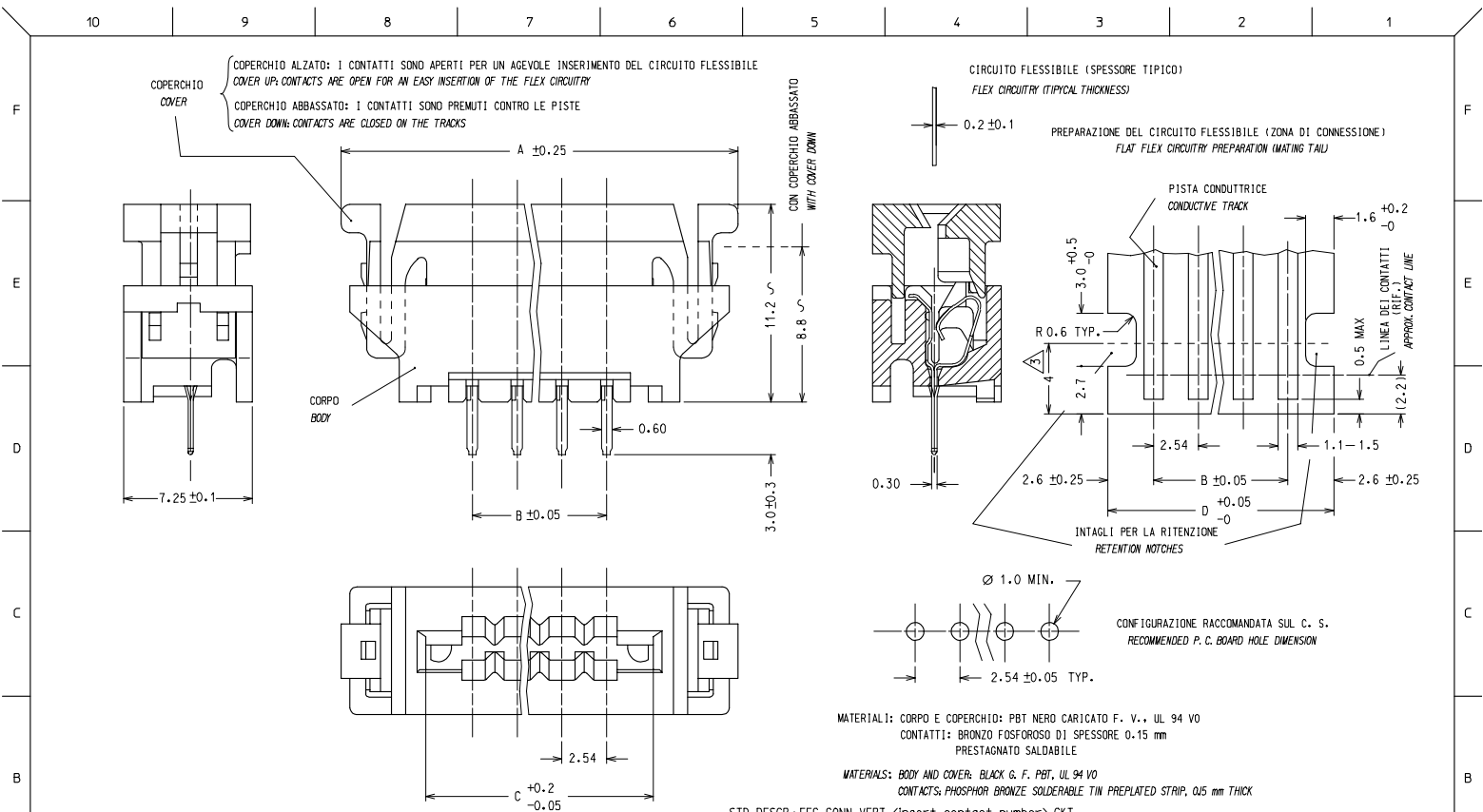
Stocking Distributor

Click to view price, real time Inventory, Delivery & Lifecycle Information:

[Molex Connector Corporation](#)
[90500-3017](#)

For any questions, you can email us directly:

sales@integrated-circuit.com



NOTE: 1) IL PRODOTTO VIENE FORNITO IN TUBI (VEDI FOGLIO 2/2)
 2) CARATTERISTICHE TECNICHE E FUNZIONALI COME DA PS 90500.
 Δ LUNGHEZZA MINIMA DI ESPOSIZIONE DELLE PISTE
 4) SPQ: VEDERE FOGLIO 2/2


NOTE: 1) PRODUCT WILL BE SUPPLIED PACKAGED IN A TUBE (SEE SHEET 2/2)
 2) TECHNICAL CHARACTERISTICS AS INDICATED IN PS90500.
 Δ MINIMUM EXPOSED LENGTH OF TRACKS
 4) SPQ: SEE SHEET 2/2

STD. DESCR.: FFC CONN VERT (insert contact number) CKT

FC NO: Z72005-0177 DRW: SBARBERI 2005/05/19 CHK: SANDANO 2005/05/20 APPR: FBI SELLO 2005/05/20	QUALITY SYMBOLS	GENERAL TOLERANCES (UNLESS SPECIFIED)	DIMENSION STYLE	SCALE	DESIGN UNITS	FIRST ANGLE PROJECTION	
	$\nabla=0$ $\nabla=0$	mm INCH	MM ONLY	5:1	METRIC		
		4 PLACES ± --- ± ---	DRAWN BY: SBARBERI DATE: 2000/04/13	TITLE: FFC CONNECTOR VERTICAL MOUNTING VERSION			
		3 PLACES ± --- ± ---	CHECKED BY: MTESTAGUZZA DATE: 2000/04/13	MOLEX INCORPORATED			
	2 PLACES ± 0.05 ± ---	APPROVED BY: RMARTUCCI DATE: 2000/04/13	SHEET NO. 1 OF 2				
	1 PLACE ± 0.10 ± ---	MATERIAL NO. SEE SHT 2/2	DOCUMENT NO. SD-90500-001				
	ANGULAR ± ---°	SIZE A3	THIS DRAWING CONTAINS INFORMATION THAT IS PROPRIETARY TO MOLEX INCORPORATED AND SHOULD NOT BE USED WITHOUT WRITTEN PERMISSION				
	DRAFT WHERE APPLICABLE MUST REMAIN WITHIN DIMENSIONS						

10 9 8 7 6 5 4 3 2 1

N° DI CODICE PART. NO.	ATTREZZAGGIO TOOLING	N° VIE CCT NO.	DIM "A"	DIM "B"	DIM "C"	DIM "D"	N° CONN./TUBO CONN. NO./TUBE	N° CONN./SCATOLA CONN. NO./BOX (SPQ)
90500-3002	NON ATTREZZATO NOT TOOLED	2						
90500-3003	"	3						
90500-3004	ATTREZZATO TOOLED	4	22.52	7.62	12.92	12.82	24	4320
90500-3005	"	5	25.06	10.16	15.46	15.36	21	3780
90500-3006	"	6	27.60	12.70	18.00	17.90	19	3420
90500-3007	"	7	30.14	15.24	20.54	20.44	17	3060
90500-3008	"	8	32.68	17.78	23.08	22.98	16	2880
90500-3009	"	9	35.22	20.32	25.62	25.52	15	2700
90500-3010	"	10	37.76	22.86	28.16	28.06	14	2520
90500-3011	"	11	40.30	25.40	30.70	30.60	13	2340
90500-3012	"	12	42.84	27.94	33.24	33.14	12	2160
90500-3013	"	13	45.38	30.48	35.78	35.68	11	1980
90500-3014	"	14	47.92	33.02	38.32	38.22	11	1980
90500-3015	"	15	50.46	35.56	40.86	40.76	10	1800
90500-3016	"	16	53.00	38.10	43.40	43.30	10	1800
90500-3017	"	17	55.54	40.64	45.94	45.84	9	1620
90500-3018	"	18	58.08	43.18	48.48	48.38	9	1620
90500-3019	"	19	60.62	45.72	51.02	50.92	8	1440
90500-3020	"	20	63.16	48.26	53.56	53.46	8	1440

FC NO: Z7005-0177 DRAWN: SBARBERI 2005/05/19 CHKD: RSANDANO 2005/05/20 APPR: FBISELLO 2005/05/20 B1	QUALITY SYMBOLS	GENERAL TOLERANCES (UNLESS SPECIFIED)		DIMENSION STYLE MM ONLY		SCALE ---	DESIGN UNITS METRIC	FIRST ANGLE PROJECTION	
		4 PLACES	mm	INCH	DRAWN BY SBARBERI	DATE 2000/04/15	TITLE FFC CONNECTOR VERTICAL MOUNTING VERSION		
		3 PLACES	mm	INCH	CHECKED BY RSANDANO	DATE 2000/04/15			
		2 PLACES	± 0.05	± ---	APPROVED BY FBISELLO	DATE 2000/04/15	MATERIAL NO. SEE TABLE		
ANGULAR ± ---°		DRAFT WHERE APPLICABLE MUST REMAIN WITHIN DIMENSIONS		DOCUMENT NO. SD-90500-001		SHEET NO. 2 OF 2			
THIS DRAWING CONTAINS INFORMATION THAT IS PROPRIETARY TO MOLEX INCORPORATED AND SHOULD NOT BE USED WITHOUT WRITTEN PERMISSION									

9 8 7 6 5 4 3 2 1