

## Excellent Integrated System Limited

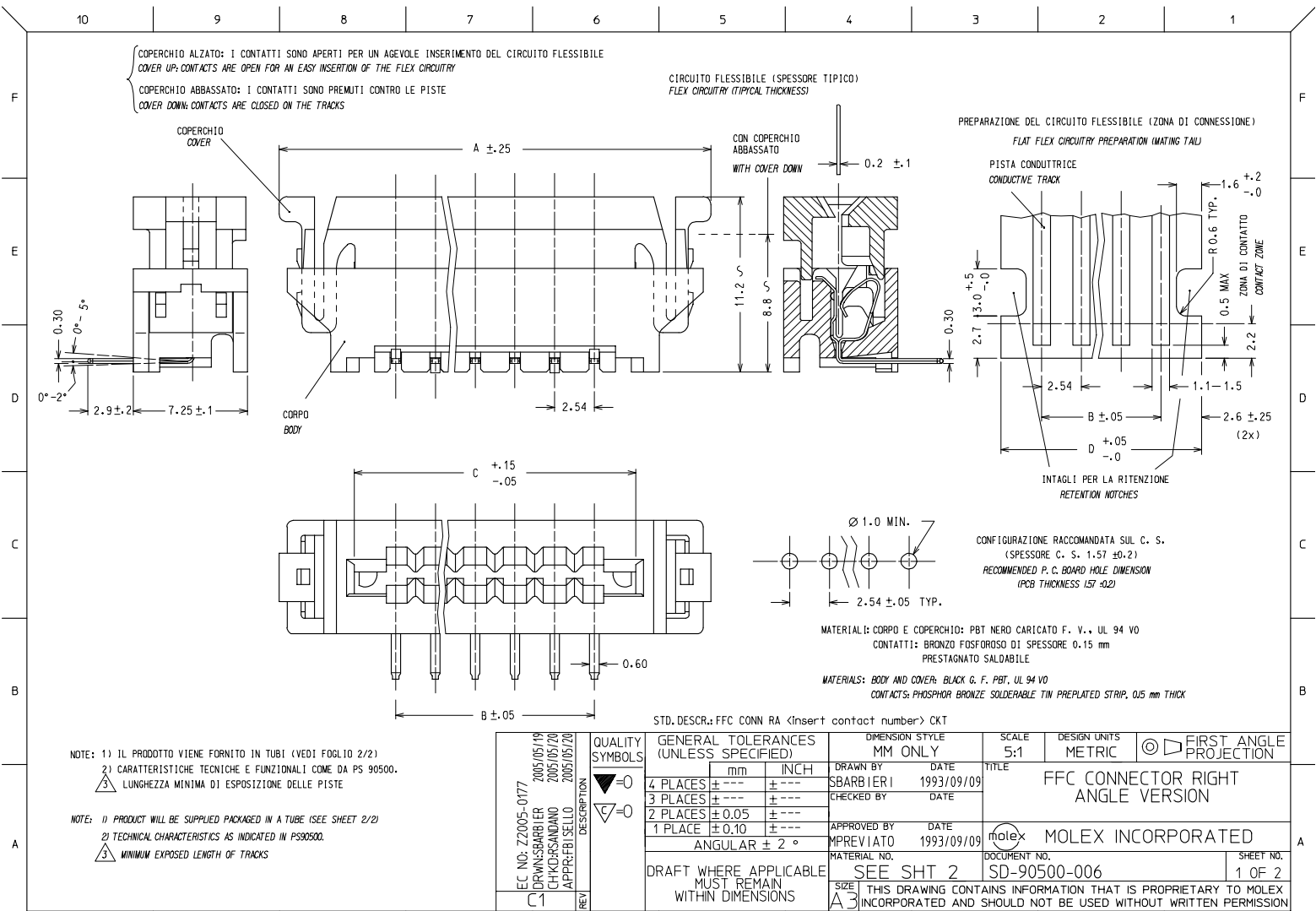
Stocking Distributor

Click to view price, real time Inventory, Delivery & Lifecycle Information:

[Molex Connector Corporation](#)  
[90500-4013](#)

For any questions, you can email us directly:

[sales@integrated-circuit.com](mailto:sales@integrated-circuit.com)



STD. DESCR.: FFC CONN RA <insert contact number> CKT

FC NO: Z72005-0177 DR: WINSBARBER 2005/05/19 CHK: DR SANDANO 2005/05/20 APPR: FBI SELLO 2005/05/20	QUALITY SYMBOLS	GENERAL TOLERANCES (UNLESS SPECIFIED)	DIMENSION STYLE	SCALE	DESIGN UNITS	FIRST ANGLE PROJECTION										
	$\nabla=0$ $\nabla=0$	<table border="1"> <tr><th>mm</th><th>INCH</th></tr> <tr><td>4 PLACES ±---</td><td>±---</td></tr> <tr><td>3 PLACES ±---</td><td>±---</td></tr> <tr><td>2 PLACES ±0.05</td><td>±---</td></tr> <tr><td>1 PLACE ±0.10</td><td>±---</td></tr> </table>	mm	INCH	4 PLACES ±---	±---	3 PLACES ±---	±---	2 PLACES ±0.05	±---	1 PLACE ±0.10	±---	MM ONLY	5:1	METRIC	
	mm	INCH														
	4 PLACES ±---	±---														
3 PLACES ±---	±---															
2 PLACES ±0.05	±---															
1 PLACE ±0.10	±---															
DRAWN BY: SBARBIERI CHECKED BY: DATE APPROVED BY: MPREVIATO DATE: 1993/09/09 MATERIAL NO.: SEE SHT 2	DATE: 1993/09/09 TITLE: FFC CONNECTOR RIGHT ANGLE VERSION MOLEX INCORPORATED DOCUMENT NO.: SD-90500-006 SHEET NO.: 1 OF 2	DIMENSION STYLE: MM ONLY SCALE: 5:1 DESIGN UNITS: METRIC FIRST ANGLE PROJECTION														
DRAFT WHERE APPLICABLE MUST REMAIN WITHIN DIMENSIONS SIZE: A3 THIS DRAWING CONTAINS INFORMATION THAT IS PROPRIETARY TO MOLEX INCORPORATED AND SHOULD NOT BE USED WITHOUT WRITTEN PERMISSION																

10 9 8 7 6 5 4 3 2 1

N° . DI CODICE PART. NO.	ATTREZZAGGIO TOOLING	N° . VIE CCT. NO.	DIM "A"	DIM "B"	DIM "C"	DIM "D"	N° . CONN./TUBO CONN. NO./TUBE	N° . CONN./SCATOLA CONN. NO./BOX (SPQ)
90500-4002	NON ATTREZZATO NOT TOOLED	2						
90500-4003	"	3						
90500-4004	ATTREZZATO TOOLED	4	22.52	7.62	12.92	12.82	24	3456
90500-4005	"	5	25.06	10.16	15.46	15.36	21	3024
90500-4006	"	6	27.60	12.70	18.00	17.90	19	2736
90500-4007	"	7	30.14	15.24	20.54	20.44	17	2448
90500-4008	"	8	32.68	17.78	23.08	22.98	16	2304
90500-4009	"	9	35.22	20.32	25.62	25.52	15	2160
90500-4010	"	10	37.76	22.86	28.16	28.06	14	2016
90500-4011	"	11	40.30	25.40	30.70	30.60	13	1872
90500-4012	"	12	42.84	27.94	33.24	33.14	12	1728
90500-4013	"	13	45.38	30.48	35.78	35.68	11	1584
90500-4014	"	14	47.92	33.02	38.32	38.22	11	1584
90500-4015	"	15	50.46	35.56	40.86	40.76	10	1440
90500-4016	"	16	53.00	38.10	43.40	43.30	10	1440
90500-4017	"	17	55.54	40.64	45.94	45.84	9	1296
90500-4018	"	18	58.08	43.18	48.48	48.38	9	1296
90500-4019	"	19	60.62	45.72	51.02	50.92	8	1152
90500-4020	"	20	63.16	48.26	53.56	53.46	8	1152

FC. NO.: Z7005-0177 DRAWN BY: SBARBIERI 2005/05/19 CHKDRSANDANO 2005/05/20 APPROV: FBI SELLO 2005/05/20	QUALITY SYMBOLS	GENERAL TOLERANCES (UNLESS SPECIFIED)	DIMENSION STYLE MM ONLY	SCALE 5:1	DESIGN UNITS METRIC	FIRST ANGLE PROJECTION																					
	$\nabla=0$ $\nabla=0$	<table border="1"> <tr> <th></th> <th>mm</th> <th>INCH</th> </tr> <tr> <td>4 PLACES</td> <td>± ---</td> <td>± ---</td> </tr> <tr> <td>3 PLACES</td> <td>± ---</td> <td>± ---</td> </tr> <tr> <td>2 PLACES</td> <td>± 0.05</td> <td>± ---</td> </tr> <tr> <td>1 PLACE</td> <td>± 0.10</td> <td>± ---</td> </tr> </table>		mm	INCH	4 PLACES	± ---	± ---	3 PLACES	± ---	± ---	2 PLACES	± 0.05	± ---	1 PLACE	± 0.10	± ---	<table border="1"> <tr> <td>DRAWN BY: SBARBIERI</td> <td>DATE: 1993/09/09</td> </tr> <tr> <td>CHECKED BY:</td> <td>DATE:</td> </tr> <tr> <td>APPROVED BY: MPREVIATO</td> <td>DATE: 1993/09/09</td> </tr> </table>	DRAWN BY: SBARBIERI	DATE: 1993/09/09	CHECKED BY:	DATE:	APPROVED BY: MPREVIATO	DATE: 1993/09/09	TITLE FFC CONNECTOR RIGHT ANGLE VERSION		
		mm	INCH																								
	4 PLACES	± ---	± ---																								
3 PLACES	± ---	± ---																									
2 PLACES	± 0.05	± ---																									
1 PLACE	± 0.10	± ---																									
DRAWN BY: SBARBIERI	DATE: 1993/09/09																										
CHECKED BY:	DATE:																										
APPROVED BY: MPREVIATO	DATE: 1993/09/09																										
<table border="1"> <tr> <td>MATERIAL NO.</td> <td>DOCUMENT NO.</td> <td>SHEET NO.</td> </tr> <tr> <td>SEE TABLE</td> <td>SD-90500-006</td> <td>2 OF 2</td> </tr> </table>	MATERIAL NO.	DOCUMENT NO.	SHEET NO.	SEE TABLE	SD-90500-006	2 OF 2	MOLEX INCORPORATED																				
MATERIAL NO.	DOCUMENT NO.	SHEET NO.																									
SEE TABLE	SD-90500-006	2 OF 2																									
DRAFT WHERE APPLICABLE MUST REMAIN WITHIN DIMENSIONS	THIS DRAWING CONTAINS INFORMATION THAT IS PROPRIETARY TO MOLEX INCORPORATED AND SHOULD NOT BE USED WITHOUT WRITTEN PERMISSION																										

9 8 7 6 5 4 3 2 1