

Excellent Integrated System Limited

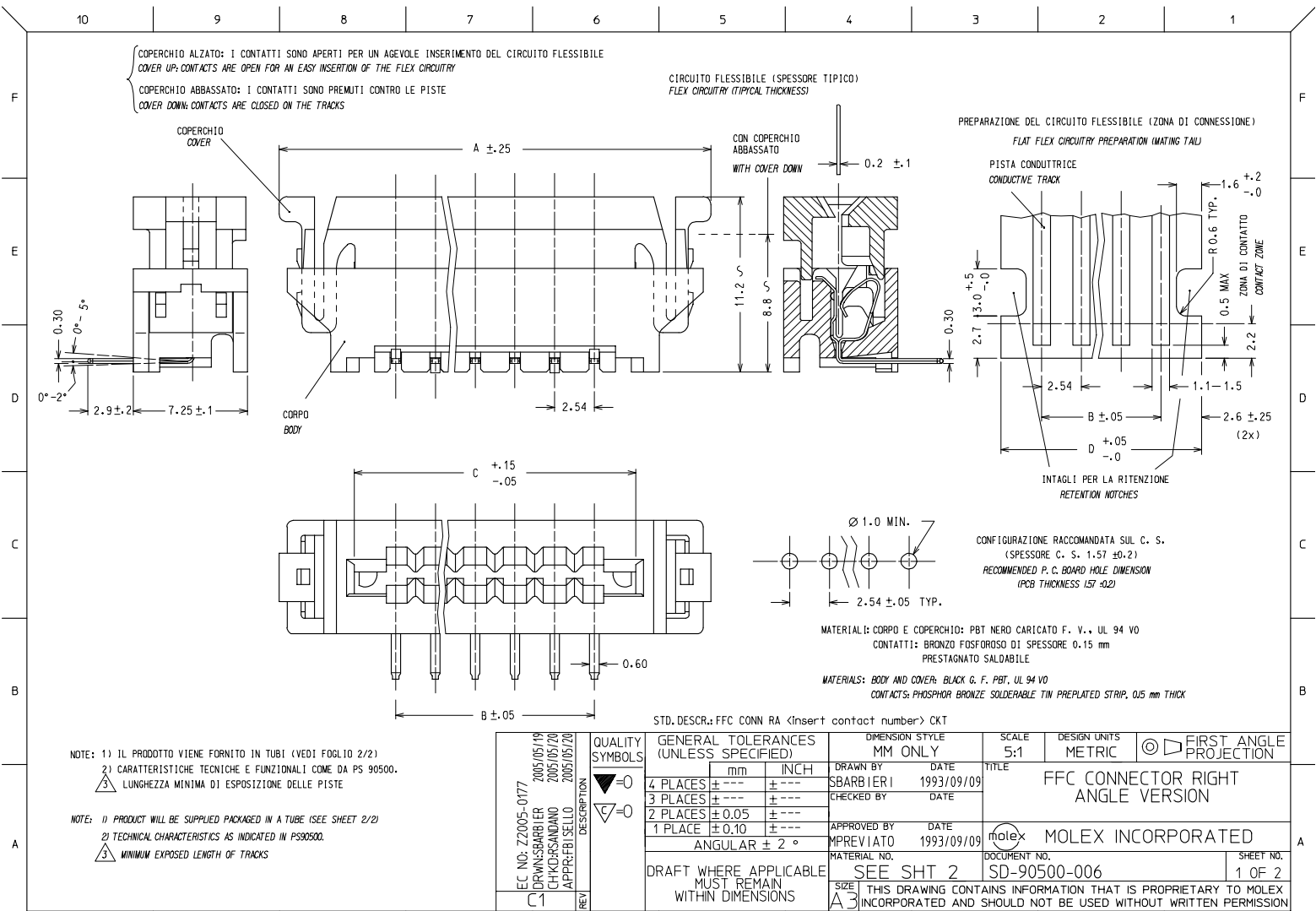
Stocking Distributor

Click to view price, real time Inventory, Delivery & Lifecycle Information:

[Molex Connector Corporation](#)
[90500-4015](#)

For any questions, you can email us directly:

sales@integrated-circuit.com



NOTE: 1) IL PRODOTTO VIENE FORNITO IN TUBI (VEDI FOGLIO 2/2)
2) CARATTERISTICHE TECNICHE E FUNZIONALI COME DA PS 90500.
3) LUNGEZZA MINIMA DI ESPOSIZIONE DELLE PISTE

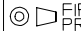

NOTE: 1) PRODUCT WILL BE SUPPLIED PACKAGED IN A TUBE (SEE SHEET 2/2)
2) TECHNICAL CHARACTERISTICS AS INDICATED IN PS90500.
3) MINIMUM EXPOSED LENGTH OF TRACKS

FC NO: Z72005-0177 DRAWN: SBARBERI 2005/05/19 CHKD: SANDANO 2005/05/20 APPR: FBI SELLO 2005/05/20	DESCRIPTION	QUALITY SYMBOLS	GENERAL TOLERANCES (UNLESS SPECIFIED)	DIMENSION STYLE	SCALE	DESIGN UNITS	FIRST ANGLE PROJECTION	
		▽=0	mm INCH	MM ONLY	5:1	METRIC		
		▽=0	4 PLACES ± --- ± ---	DRAWN BY	DATE	TITLE	FFC CONNECTOR RIGHT ANGLE VERSION	
			3 PLACES ± --- ± ---	SBARBERI	1993/09/09			
			2 PLACES ± 0.05 ± ---	CHECKED BY	DATE			

APPROVED BY	DATE	MOLEX INCORPORATED	SHEET NO.
MATERIAL NO.	1993/09/09		
DRAFT WHERE APPLICABLE MUST REMAIN WITHIN DIMENSIONS		SD-90500-006	
SIZE A3		THIS DRAWING CONTAINS INFORMATION THAT IS PROPRIETARY TO MOLEX INCORPORATED AND SHOULD NOT BE USED WITHOUT WRITTEN PERMISSION	

10 9 8 7 6 5 4 3 2 1

N° . DI CODICE PART. NO.	ATTREZZAGGIO TOOLING	N° . VIE CCT. NO.	DIM "A"	DIM "B"	DIM "C"	DIM "D"	N° . CONN./TUBO CONN. NO./TUBE	N° . CONN./SCATOLA CONN. NO./BOX (SPQ)
90500-4002	NON ATTREZZATO NOT TOOLED	2						
90500-4003	"	3						
90500-4004	ATTREZZATO TOOLED	4	22.52	7.62	12.92	12.82	24	3456
90500-4005	"	5	25.06	10.16	15.46	15.36	21	3024
90500-4006	"	6	27.60	12.70	18.00	17.90	19	2736
90500-4007	"	7	30.14	15.24	20.54	20.44	17	2448
90500-4008	"	8	32.68	17.78	23.08	22.98	16	2304
90500-4009	"	9	35.22	20.32	25.62	25.52	15	2160
90500-4010	"	10	37.76	22.86	28.16	28.06	14	2016
90500-4011	"	11	40.30	25.40	30.70	30.60	13	1872
90500-4012	"	12	42.84	27.94	33.24	33.14	12	1728
90500-4013	"	13	45.38	30.48	35.78	35.68	11	1584
90500-4014	"	14	47.92	33.02	38.32	38.22	11	1584
90500-4015	"	15	50.46	35.56	40.86	40.76	10	1440
90500-4016	"	16	53.00	38.10	43.40	43.30	10	1440
90500-4017	"	17	55.54	40.64	45.94	45.84	9	1296
90500-4018	"	18	58.08	43.18	48.48	48.38	9	1296
90500-4019	"	19	60.62	45.72	51.02	50.92	8	1152
90500-4020	"	20	63.16	48.26	53.56	53.46	8	1152

FC. NO.: Z7005-0177 DRAWN BY: SBARBIERI 2005/05/19 CHKDRSANDANO 2005/05/20 APPROV: FBI SELLO 2005/05/20	QUALITY SYMBOLS	GENERAL TOLERANCES (UNLESS SPECIFIED)	DIMENSION STYLE	SCALE	DESIGN UNITS	FIRST ANGLE PROJECTION															
	$\nabla=0$ $\nabla=0$	<table border="1"> <tr> <th></th> <th>mm</th> <th>INCH</th> </tr> <tr> <td>4 PLACES</td> <td>\pm---</td> <td>\pm---</td> </tr> <tr> <td>3 PLACES</td> <td>\pm---</td> <td>\pm---</td> </tr> <tr> <td>2 PLACES</td> <td>\pm0.05</td> <td>\pm---</td> </tr> <tr> <td>1 PLACE</td> <td>\pm0.10</td> <td>\pm---</td> </tr> </table>		mm	INCH	4 PLACES	\pm ---	\pm ---	3 PLACES	\pm ---	\pm ---	2 PLACES	\pm 0.05	\pm ---	1 PLACE	\pm 0.10	\pm ---	MM ONLY	5:1	METRIC	 FIRST ANGLE PROJECTION
		mm	INCH																		
	4 PLACES	\pm ---	\pm ---																		
3 PLACES	\pm ---	\pm ---																			
2 PLACES	\pm 0.05	\pm ---																			
1 PLACE	\pm 0.10	\pm ---																			
$\nabla=0$ $\nabla=0$	ANGULAR \pm 2 ° DRAFT WHERE APPLICABLE MUST REMAIN WITHIN DIMENSIONS	DRAWN BY: SBARBIERI DATE: 1993/09/09 CHECKED BY: DATE:	TITLE: FFC CONNECTOR RIGHT ANGLE VERSION																		
APPROVED BY: MPREVIATO DATE: 1993/09/09 MATERIAL NO.: SEE TABLE SIZE: A3	 MOLEX INCORPORATED DOCUMENT NO.: SD-90500-006	SHEET NO.: 2 OF 2																			

9 8 7 6 5 4 3 2 1