

## Excellent Integrated System Limited

Stocking Distributor

Click to view price, real time Inventory, Delivery & Lifecycle Information:

[Johanson Technology Inc.](#)  
[2150BP39A0100E](#)

For any questions, you can email us directly:  
[sales@integrated-circuit.com](mailto:sales@integrated-circuit.com)

# High Frequency Ceramic Solutions

Preliminary

## 2.15 GHz Band Pass Filter

P/N 2150BP39A0100

Detail Specification: 05/03/11

Page 1 of 2

### General Specifications

Part Number	2150BP39A0100	
Frequency (MHz)	2100 ~ 2200	
Attenuation (min.)	1950 MHz	18 dB
Attenuation (min.)	2360 MHz	18 dB

Insertion Loss	3.2 dB max.
Return Loss	9.5 dB min.
Input Power	500 mW max.
Impedance	50 Ω
Reel Quantity	3000
Operating Temperature	-40 to +85°C
Storage Temperature	+5 ~ +35°C, Humidity 45~75%RH, 12 mos. max

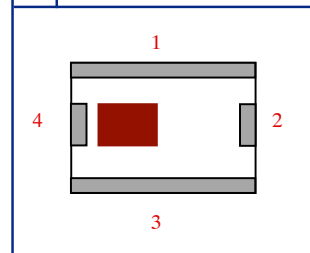
P/N	Packaging	Bulk	Suffix = S	Eg. 2150BP39A0100S
	Style	T & R	Suffix = E	Eg. 2150BP39A0100E
Suffix	Termination	100% Tin	Suffix = None	Eg. 2150BP39A0100(E or S)
	Style	Tin / Lead	Suffix = /Pb	Eg. 2150BP39A0100(E or S)/Pb

### Terminal Configuration

No.	Function
1	GND
2	OUT
3	GND
4	IN

### Mechanical Dimensions

	In	mm
L	0.098 ± 0.008	2.50 ± 0.20
W	0.079 ± 0.008	2.00 ± 0.20
T	0.035 ± 0.004	0.90 ± 0.10
a	0.012 ± 0.008	0.30 ± 0.20
b	0.024 ± 0.008	0.60 ± 0.20
c	0.012 ± 0.008	0.30 ± 0.20

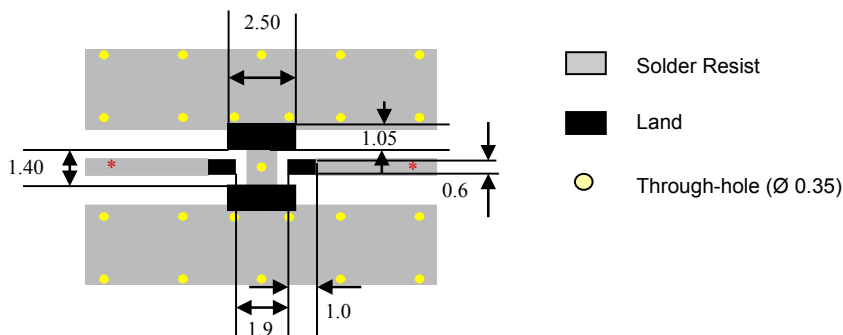


### Mounting Considerations

Mount these devices with brown mark facing up.

\* Line width should be designed to provide 50 Ω impedance matching characteristics.

Units: mm



Johanson Technology, Inc. reserves the right to make design changes without notice.

All sales are subject to Johanson Technology, Inc. terms and conditions.

## High Frequency Ceramic Solutions

Preliminary

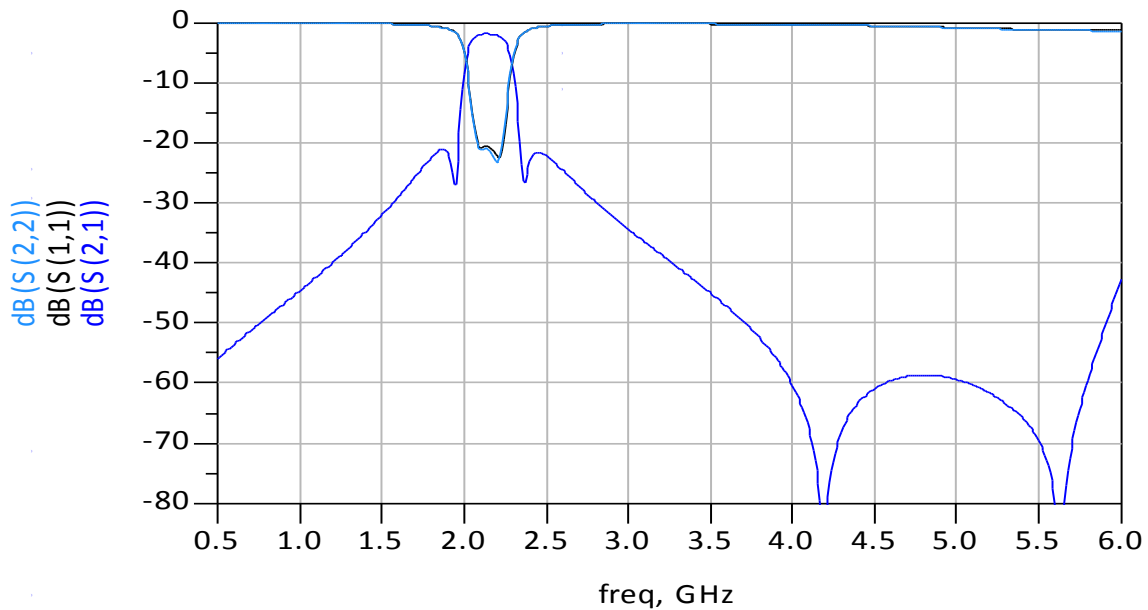
### 2.15 GHz Band Pass Filter

P/N 2150BP39A0100

Detail Specification: 05/03/11

Page 2 of 2

#### Typical Electrical Performance (T=25°C)



Johanson Technology, Inc. reserves the right to make design changes without notice.

All sales are subject to Johanson Technology, Inc. terms and conditions.