

Excellent Integrated System Limited

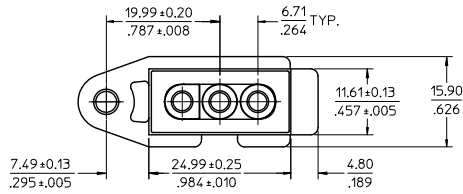
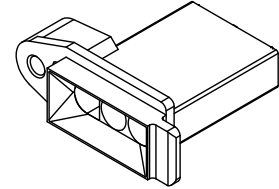
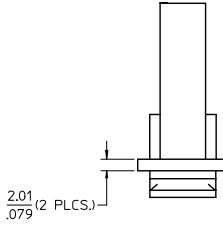
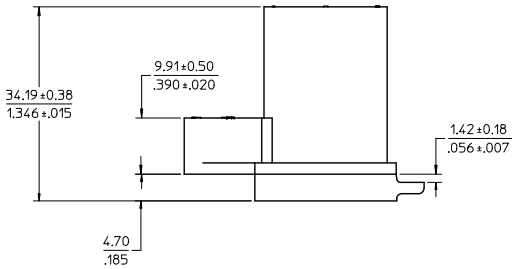
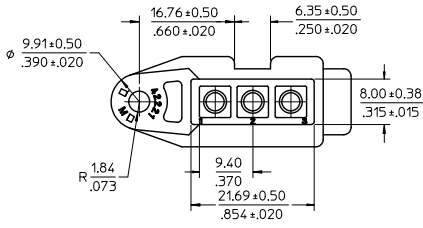
Stocking Distributor

Click to view price, real time Inventory, Delivery & Lifecycle Information:

[Molex Connector Corporation](#)
[0019092035](#)

For any questions, you can email us directly:

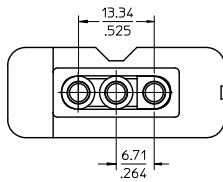
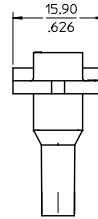
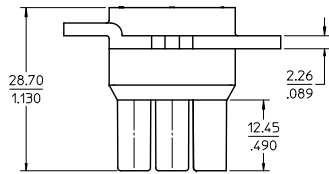
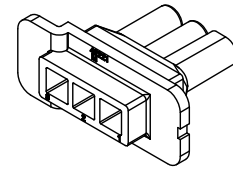
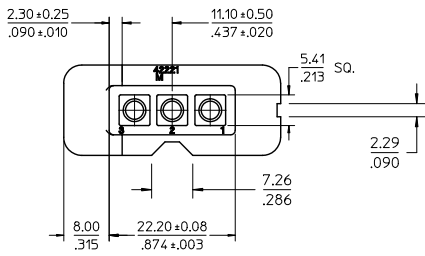
sales@integrated-circuit.com



- NOTES:
1. MATERIAL: NYLON, TYPE 6/6, UL94V-2, COLOR: NATURAL
 2. FINISH: NONE
 3. PRODUCT SPECIFICATION: N/A
 4. PACKAGING INFORMATION: BULK

PLUG

REDRAW FROM MODEL EC NO: UCP2011-1528 DRW: LESTEWART CHKD: APPRE: SMITH DATE: 2010/11/30 DATE: 2010/12/06	QUALITY SYMBOLS ▽=0 ▽=0	GENERAL TOLERANCES (UNLESS SPECIFIED)		DIMENSION STYLE MM/IN		SCALE 2:1	DESIGN UNITS INCH	THIRD ANGLE PROJECTION		
		4 PLACES ± --- ± ---	mm	INCH	DRAWN BY RHK	DATE 1988/03/04	TITLE .093/(2.36) HOUSING PLUG AND RECEPTACLE, 3 CIRCUIT .264/(6.70) CENTERS			
		3 PLACES ± --- ± .010			CHECKED BY RHR	DATE 1988/03/04				
		2 PLACES ± .25 ± .015			APPROVED BY FSMITH		DATE 2010/12/06	MOLEX INCORPORATED		SHEET NO. 1 OF 2
1 PLACE ± .38 ± ---			MATERIAL NO. 19-09-2035		DOCUMENT NO. SD-42221-3*					
DRAFT WHERE APPLICABLE MUST REMAIN WITHIN DIMENSIONS				THIS DRAWING CONTAINS INFORMATION THAT IS PROPRIETARY TO MOLEX INCORPORATED AND SHOULD NOT BE USED WITHOUT WRITTEN PERMISSION						



NOTES:

1. MATERIAL: NYLON, TYPE 6/6
UL94V-2, COLOR: NATURAL
2. FINISH: NONE
- PRODUCT SPECIFICATION: N/A
4. PACKAGING INFORMATION: BULK

RECEPTACLE

REDRAW FROM MODEL EC NO: UCP2011-1528 DRAWN BY: STEWART CHKD: APPRECIATION DATE: 2010/11/30 DATE: 2010/12/06	QUALITY SYMBOLS ▽=0 ▽=0	GENERAL TOLERANCES (UNLESS SPECIFIED)		DIMENSION STYLE MM/IN		SCALE 2:1	DESIGN UNITS INCH	THIRD ANGLE PROJECTION		
		4 PLACES ± --- ± ---	3 PLACES ± --- ± .010	DRAWN BY RWK	DATE 1988/03/04	TITLE .093/(2.36) HOUSING PLUG AND RECEPTACLE, 3 CIRCUIT .264/(6.70) CENTERS				
		2 PLACES ± .25 ± .015	1 PLACE ± .38 ± ---	CHECKED BY RHR	DATE 1988/03/04	APPROVED BY F SMITH				
		ANGULAR ± 1/2°		MATERIAL NO. 19-09-1035		DOCUMENT NO. SD-42221-3*		SHEET NO. 2 OF 2		
DRAFT WHERE APPLICABLE MUST REMAIN WITHIN DIMENSIONS				THIS DRAWING CONTAINS INFORMATION THAT IS PROPRIETARY TO MOLEX INCORPORATED AND SHOULD NOT BE USED WITHOUT WRITTEN PERMISSION						