

Excellent Integrated System Limited

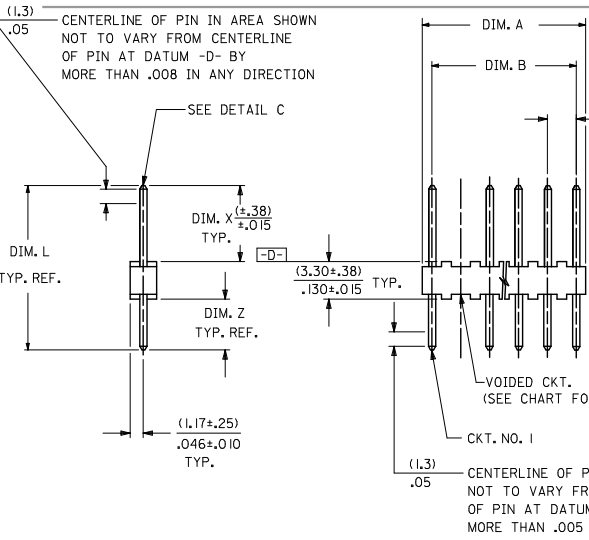
Stocking Distributor

Click to view price, real time Inventory, Delivery & Lifecycle Information:

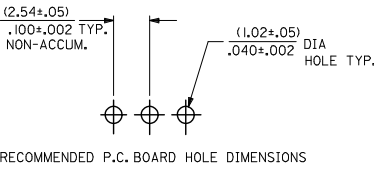
[Molex Connector Corporation](#)
[0022042038](#)

For any questions, you can email us directly:

sales@integrated-circuit.com



CKTS. NO. OF	DIM. B	DIM. A
2	(2.54 ± .05)	(4.83 ± .20)
	.100 ± .002	.190 ± .008
3	(5.08 ± .15)	(7.37 ± .20)
	.200 ± .005	.290 ± .008
4	(7.62 ± .15)	(9.91 ± .20)
	.300 ± .005	.390 ± .008
5	(10.16 ± .15)	(12.45 ± .20)
	.400 ± .005	.490 ± .008
6	(12.70 ± .15)	(14.99 ± .23)
	.500 ± .006	.590 ± .009
7	(15.24 ± .15)	(17.53 ± .23)
	.600 ± .006	.690 ± .009
8	(17.78 ± .15)	(20.07 ± .23)
	.700 ± .006	.790 ± .009
9	(20.32 ± .18)	(22.61 ± .25)
	.800 ± .007	.890 ± .010
10	(22.86 ± .18)	(25.15 ± .25)
	.900 ± .007	.990 ± .010
11	(25.40 ± .18)	(27.69 ± .25)
	1.000 ± .007	1.090 ± .010
12	(27.94 ± .20)	(30.23 ± .28)
	1.100 ± .008	1.190 ± .011
13	(30.48 ± .20)	(32.77 ± .28)
	1.200 ± .008	1.290 ± .011
14	(33.02 ± .20)	(35.31 ± .28)
	1.300 ± .008	1.390 ± .011
15	(35.56 ± .20)	(37.85 ± .28)
	1.400 ± .008	1.490 ± .011
16	(38.10 ± .20)	(40.39 ± .28)
	1.500 ± .008	1.590 ± .011



LEGEND

A-4380-N * * * * *

NO. OF CKTS. * * * * *

VOID LOCATION

NO VOID = SEE 4030 SERIES DWG. WITH VOIDS = NO. CORRESPONDS TO CKT. NO. VOIDED. MULT. VOIDS = START WITH 51 AND ARE ASSIGNED CONSECUTIVELY.

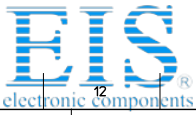
SECONDARY OPERATIONS	
CODE	PACKAGE
BLANK	BULK
	PER PK-4030-001

VERSION LETTER CHANGES WHEN PIN NO. OR PRESS DIM. CHANGES.

PLATING CODE PER SDES-88.

- NOTES:
- MATERIAL: NYLON, UL 94V-0, COLOR: WHITE
 - FINISH:
 - (197) OVERALL REFLOWED MATTE TIN: 0.00152/.000060 MIN. OVER 0.00127/.000050 MIN. NICKEL OVERALL.
 - (241) SELECT GOLD: 0.00051/.000020 MIN. SELECT TIN: 0.00254/.000100 MIN. OVERALL NICKEL UNDERPLATE: 0.00127/.000050 MIN.
 - PARTS CONFORM TO PRODUCT SPECIFICATION PS-10-07.
 - PACKAGING: SEE LEGEND
 - PINS MUST CONFORM TO SOLDERABILITY SPEC. SMES-152.
 - PIN PUSH OUT FORCE: 2 LBS. MIN.
 - PARTS ARE STACKABLE END TO END AND SIDE TO SIDE ON (2.54)/.100 CENTERS.
 - THIS PART CONFORMS TO CLASS B REQUIREMENTS OF COSMETIC SPECIFICATION PS-45499-002.

REINSTATE 22112071 REC NO: UCP2015-3608 DRAWN BY: DRWINKTPPER 2015/03/04 CHECKED BY: CHKONGNIVEN 2015/03/04 APPROVED BY: APRRCSMITH 2015/03/10 ZAS REV	QUALITY SYMBOLS ∇=0 ∇=0 ∇=0	GENERAL TOLERANCES (UNLESS SPECIFIED)		DIMENSION STYLE		SCALE	DESIGN UNITS	THIRD ANGLE PROJECTION	
				MM/IN		---	INCH		
		4 PLACES ± --- ± ---	3 PLACES ± --- ± .010	DRAWN BY	DATE	TITLE			
		2 PLACES ± 0.25 ± .014	1 PLACE ± 0.36 ± ---	DS	1984/09/07	KK HEADER (2.54)/.100 CENTERS 4030 WITH VOIDS			
ANGULAR ± 1/2°		APPROVED BY		MATERIAL NO.		DOCUMENT NO.		SHEET NO.	
DRAFT WHERE APPLICABLE MUST REMAIN WITHIN DIMENSIONS		KJA		1984/09/07		SDA-4380		1 OF 3	
SEE CHART THIS DRAWING CONTAINS INFORMATION THAT IS PROPRIETARY TO MOLEX INCORPORATED AND SHOULD NOT BE USED WITHOUT WRITTEN PERMISSION									



13 12 11 10 9 8 7 6 5 4 3 2 1

ENG. NO.	PIN NO.	DIM. L	DIM. X	DIM. Z	DIM. G	DIM. T
A-4380-NA197-*	42663-0302	(14.22) .560	(7.49) .295	(3.43) .135	N/A	OVERALL
A-4380-NA241-*	42663-0305	(14.22) .560	(7.49) .295	(3.43) .135	(3.56) .140	(3.43) .135
A-4380-NC197-*	42663-0562	(17.53) .690	(11.13) .438	(3.10) .122	N/A	OVERALL

CHANGE PIN EC NO: UCP2072-1621 DRAWN BY: CHRODRIKER APPROVED BY: APPRENTICE DATE: 2017/01/23 DATE: 2017/07/23 DATE: 2017/07/23 DATE: 2017/07/23	QUALITY SYMBOLS ▽=0 ▽=0 ▽=0	GENERAL TOLERANCES (UNLESS SPECIFIED)		DIMENSION STYLE MM/IN		SCALE ---	DESIGN UNITS INCH	THIRD ANGLE PROJECTION
		4 PLACES ± --- ± --- 3 PLACES ± --- ± --- 2 PLACES ± --- ± --- 1 PLACE ± --- ± ---	mm INCH	DRAWN BY: SAMIEC DATE: 1984/09/07 CHECKED BY: DS DATE: 1984/09/07 APPROVED BY: KJA DATE: 1984/09/07	TITLE KK HEADER (2.54)/.100 CENTERS 4030 WITH VOIDS			
		ANGULAR ±1/2°		MATERIAL NO.	MOLEX INCORPORATED		SHEET NO. 2 OF 3	
		DRAFT WHERE APPLICABLE MUST REMAIN WITHIN DIMENSIONS		SEE CHART		DOCUMENT NO. SDA-4380	THIS DRAWING CONTAINS INFORMATION THAT IS PROPRIETARY TO MOLEX INCORPORATED AND SHOULD NOT BE USED WITHOUT WRITTEN PERMISSION	

12 11 10 9 8 7 6 5 4 3 2 1



A-4380-NA197-*		
PART NO.	ENG. NO.	VOID CKT.
22-04-2038	A-4380-3A197-2	2
22-04-2041	A-4380-4A197-2	2
22-04-2161	A-4380-16A197-2	2

A-4380-NA241-*		
PART NO.	ENG. NO.	VOID CKT.
22-11-2031	A-4380-3A241-1	1
22-11-2061	A-4380-6A241-2	2
22-11-2071	A-4380-7A241-2	2
22-11-2081	A-4380-8A241-2	2

A-4380-NC197-*		
PART NO.	ENG. NO.	VOID CKT.
22-04-2063	A-4380-6C197-2	2
22-04-2073	A-4380-7C197-2	2

SEE SHEET 1 REC NO: UCP2015-3608 DRAWN BY: 2015/03/04 CHK'D BY: 2015/03/04 APPROVED BY: 2015/03/10 ZAS REV	QUALITY SYMBOLS	GENERAL TOLERANCES (UNLESS SPECIFIED)	DIMENSION STYLE IN/MM	SCALE ---	DESIGN UNITS INCH	THIRD ANGLE PROJECTION
	▽=0	4 PLACES ± --- ± ---	DRAWN BY DATE KKS 1984/09/07	TITLE	KK HEADER (2.54)/.100 CENTERS 4030 WITH VOIDS	
	▽=0	3 PLACES ± --- ± ---	CHECKED BY DATE DS 1984/09/07	APPROVED BY DATE		
	▽=0	2 PLACES ± --- ± ---	MATERIAL NO. DOCUMENT NO.			
▽=0	1 PLACE ± --- ± ---	DRAFT WHERE APPLICABLE MUST REMAIN WITHIN DIMENSIONS		SEE CHART SDA-4380		SHEET NO. 3 OF 3
▽=0	0 PLACE ± ±	ANGULAR ±1/2°		THIS DRAWING CONTAINS INFORMATION THAT IS PROPRIETARY TO MOLEX INCORPORATED AND SHOULD NOT BE USED WITHOUT WRITTEN PERMISSION		