

Excellent Integrated System Limited

Stocking Distributor

Click to view price, real time Inventory, Delivery & Lifecycle Information:

[Molex Connector Corporation](#)
[0638242800](#)

For any questions, you can email us directly:

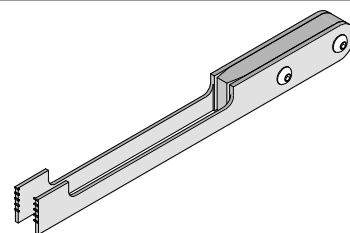
sales@integrated-circuit.com

Extractor Tool for Milli-Grid™ 2.0 Housings

Extractor Tool

molex

Application Tooling Specification Sheet



Order No. 63824-2800

FEATURES

This tool is designed to extract the Milli-Grid™ 2.0mm housings, 51110 series from the Milli-Grid™ 2.0mm headers. This tool measures 12.7mm (.50") by 133.0mm (5.2") long.

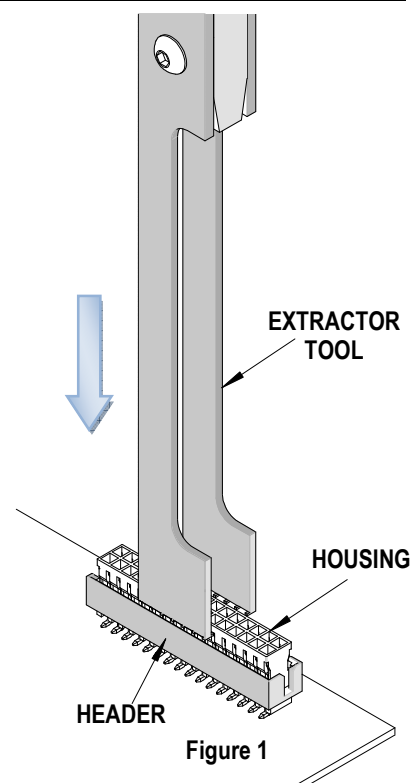
SCOPE

Products: Milli-Grid™ 2.0mm Housings 4-32 circuits.

Housing Series No.	Header Series No.	Housing Order No.					
51110	87758, 87759, 87760, 87831, 87832 and 87833	51110-0450	51110-0460	51110-0650	51110-0656	51110-0660	51110-0850
		51110-0851	51110-0856	51110-0860	51110-1050	51110-1051	51110-1053
		51110-1056	51110-1060	51110-1250	51110-1251	51110-1256	51110-1260
		51110-1261	51110-1450	51110-1451	51110-1650	51110-1651	51110-1850
		51110-1851	51110-2050	51110-2051	51110-2250	51110-2251	51110-2450
		51110-2451	51110-2650	51110-2651	51110-2850	51110-2851	51110-3050
		51110-3051	51110-3250	51110-3251			

OPERATION

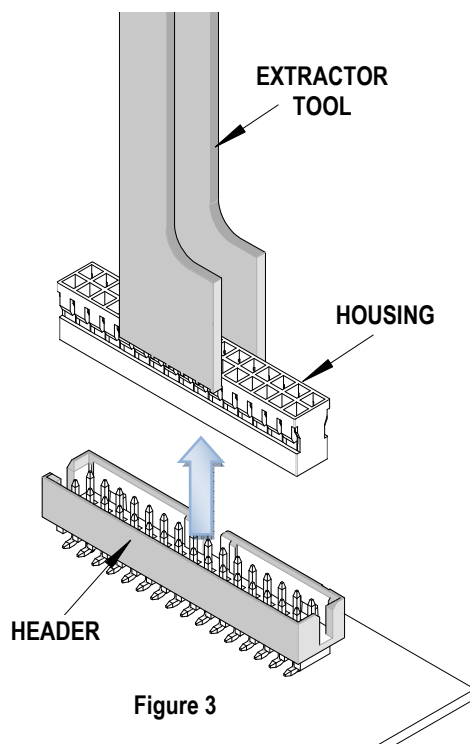
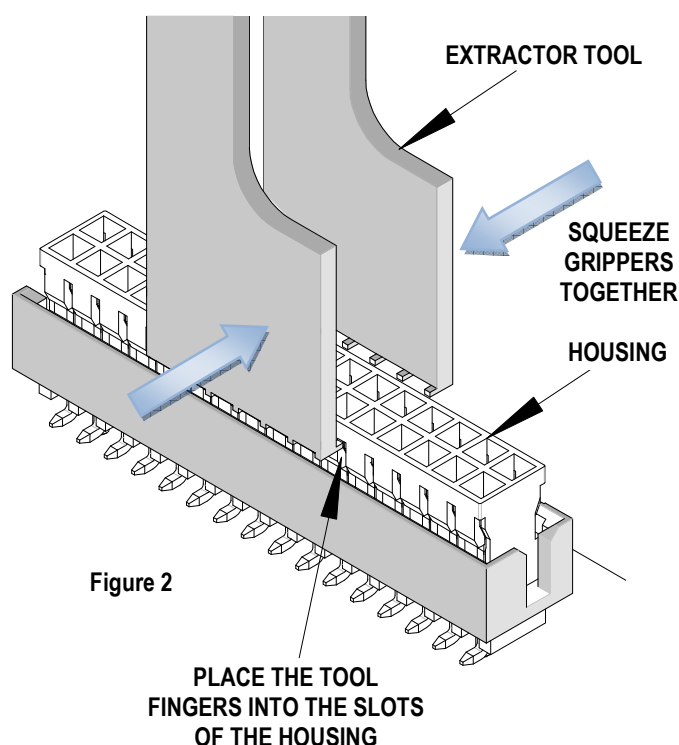
1. Holding the extractor tool between the thumb and index finger, visually center the extractor on the housing. See Figures 1.
2. Align one side of the extractor tool grippers with the slots on that side of the housing. This will help guide the extraction tool into the housing slots until all the grippers are positioned into the housing slots. See Figure 2.



Extractor Tool for Milli-Grid™ 2.0 Housings

Note: If any of the wire cables are between the tool and the housing, move them off to one side of the housing to create a clear path for the extractor tool to line up with the housing slots.

3. Squeeze the extractor tool grippers together to grip the housing on both sides by the slots, make sure all fingers of the extractor tool are sitting on the inside of the housing slots.
4. With constant pressure on the extractor tool grippers, gently pull the housing straight up and away from the header mounted to the PC board until the housing snapped out of the header. See Figure 3.



Molex does not offer repair parts for Extractor Tools due to the inexpensive nature of these tools.

CAUTION: This extractor tool should be used to extract the housing only. Using it for unintended purposes may cause injury or damage to parts. Be careful not to damage the housing slots.

CAUTION: Molex specifications are valid only when used with Molex housings and tooling.

Contact Information

For more information on Molex application tooling please contact Molex at 1-800-786-6539.

Visit our Web site at <http://www.molex.com>